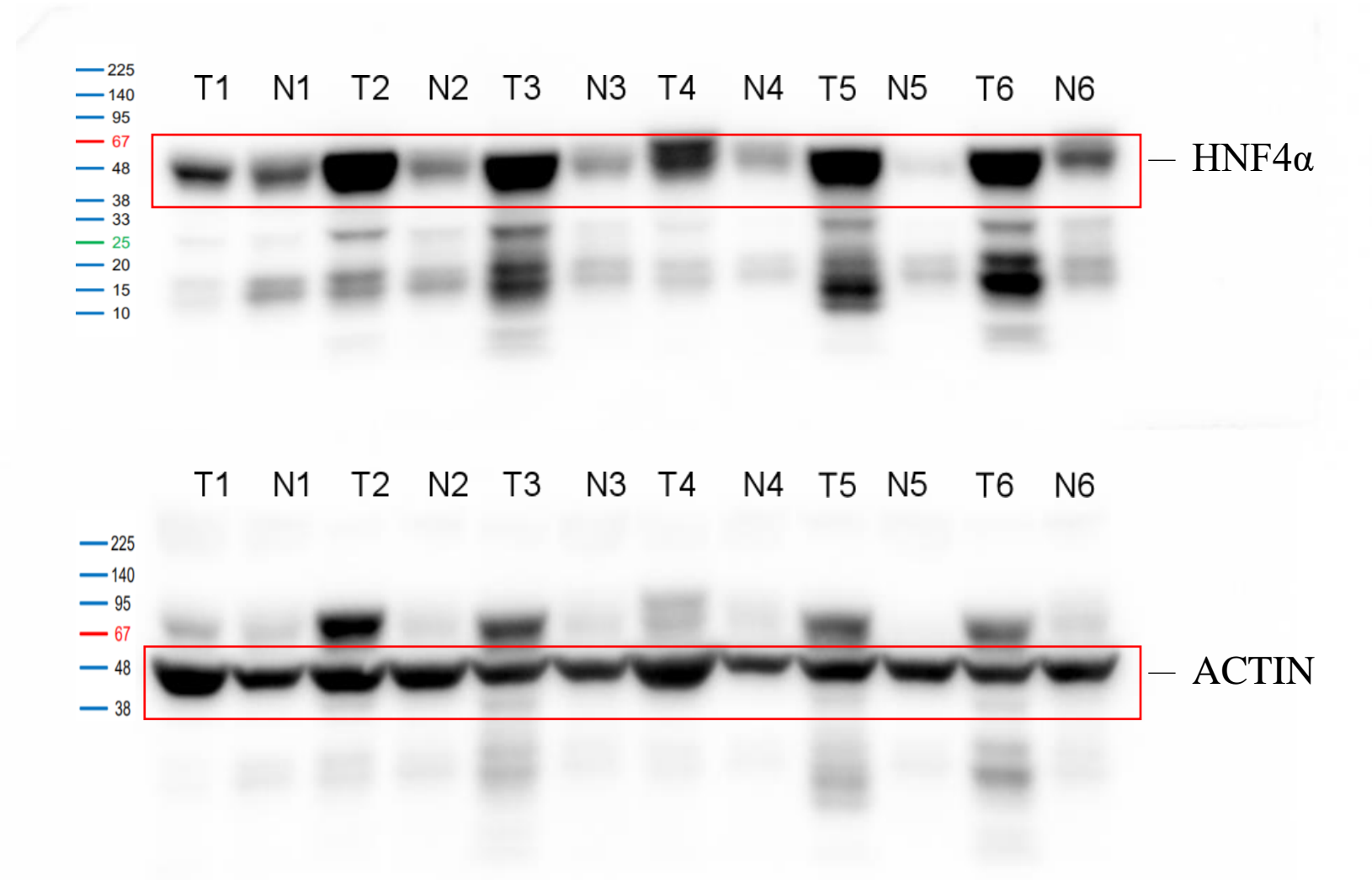


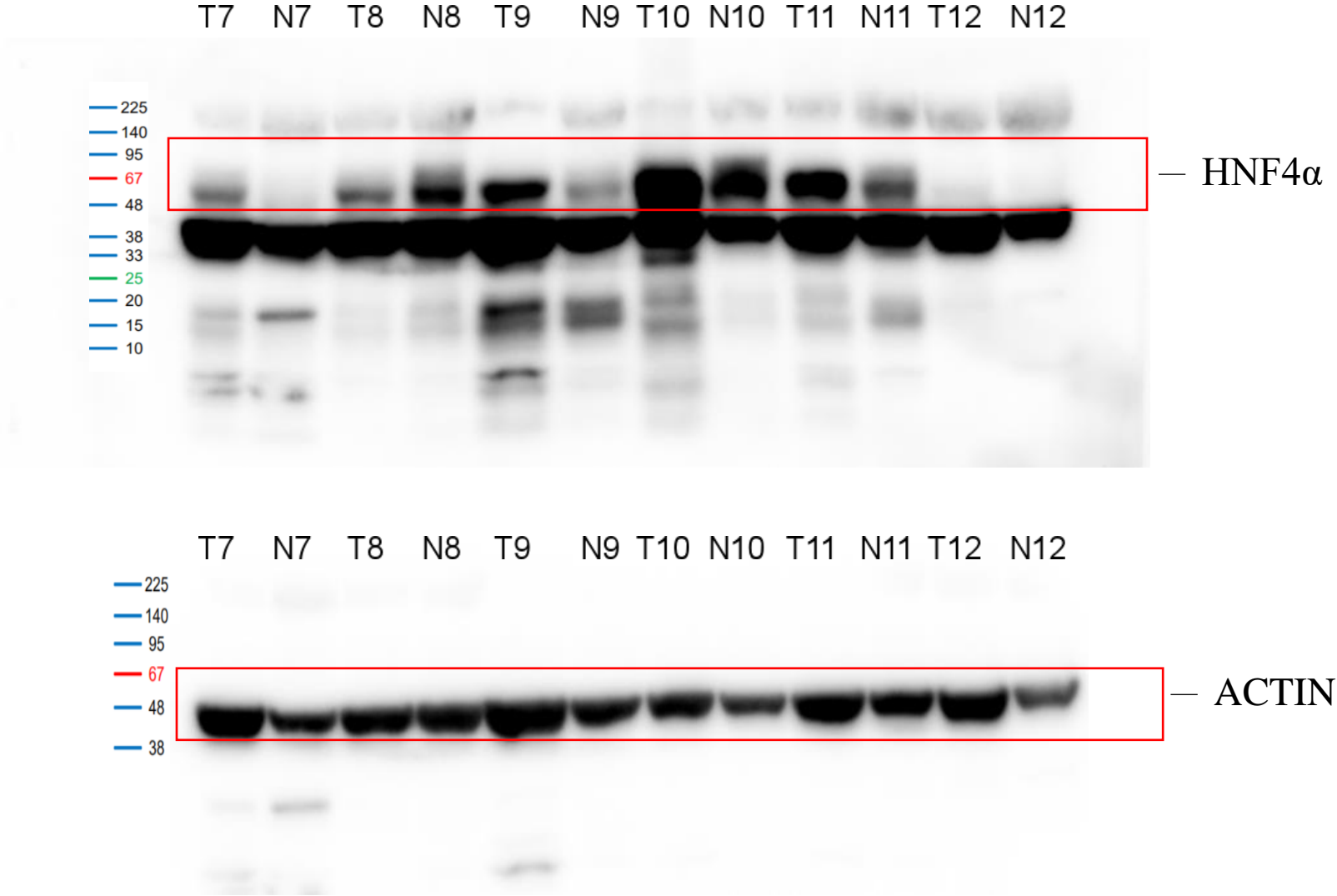
Experimental raw data of Western blot

Fig 1B



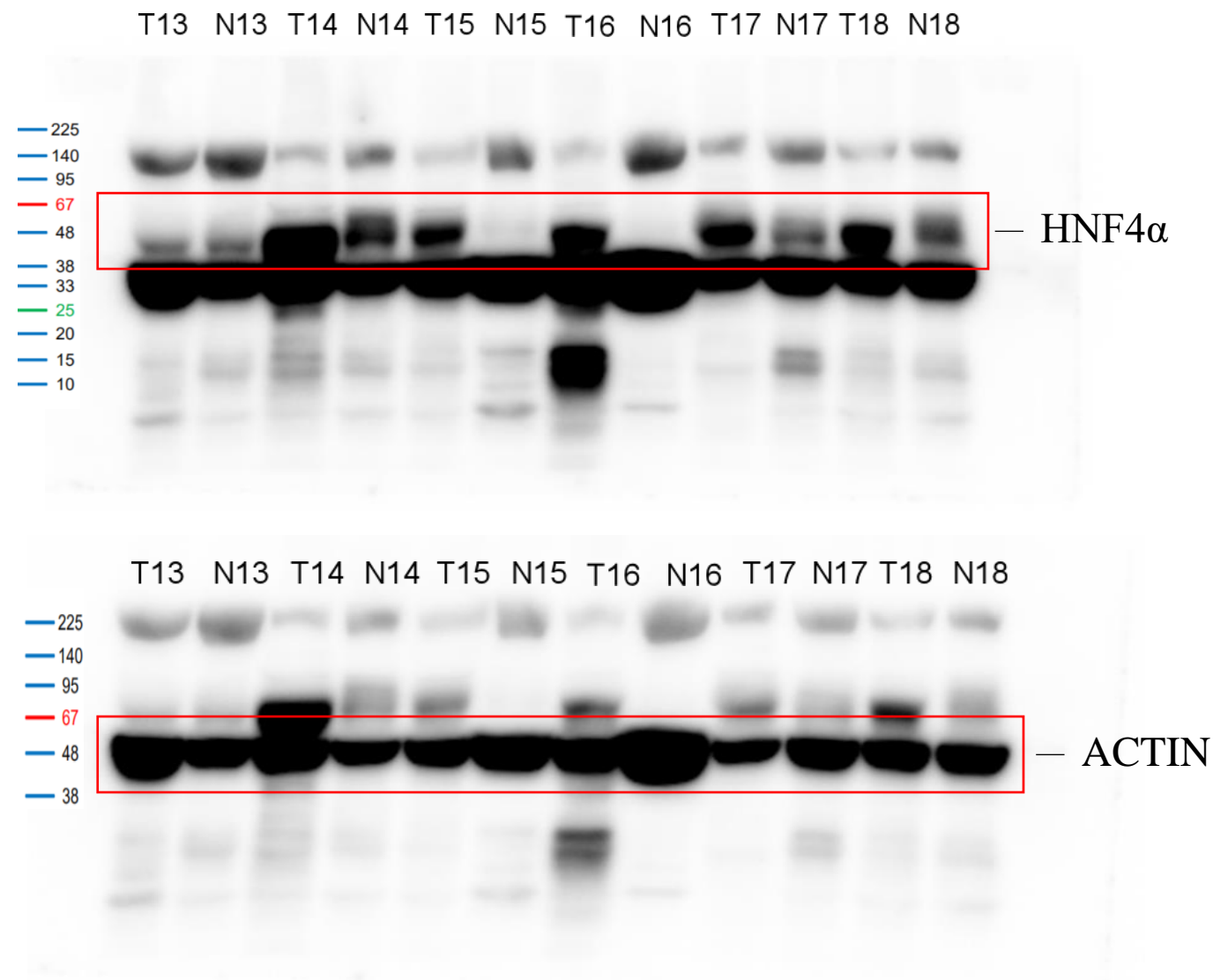
10% SDS polyacrylamide gel was used for protein separation.

Fig 1B



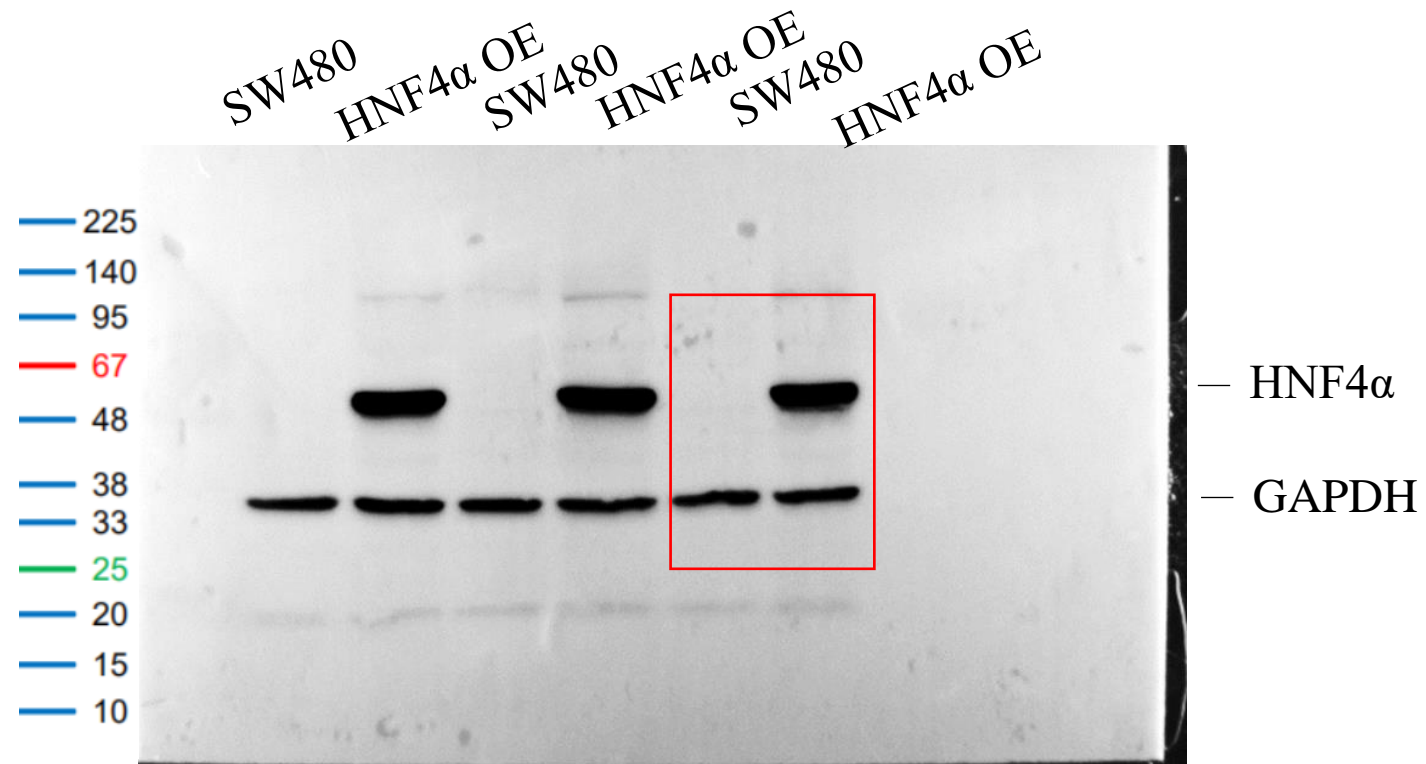
10% SDS polyacrylamide gel was used for protein separation.

Fig 1B



10% SDS polyacrylamide gel was used for protein separation.

Fig 2C left



10% SDS polyacrylamide gel was used for protein separation.

Fig 2C right

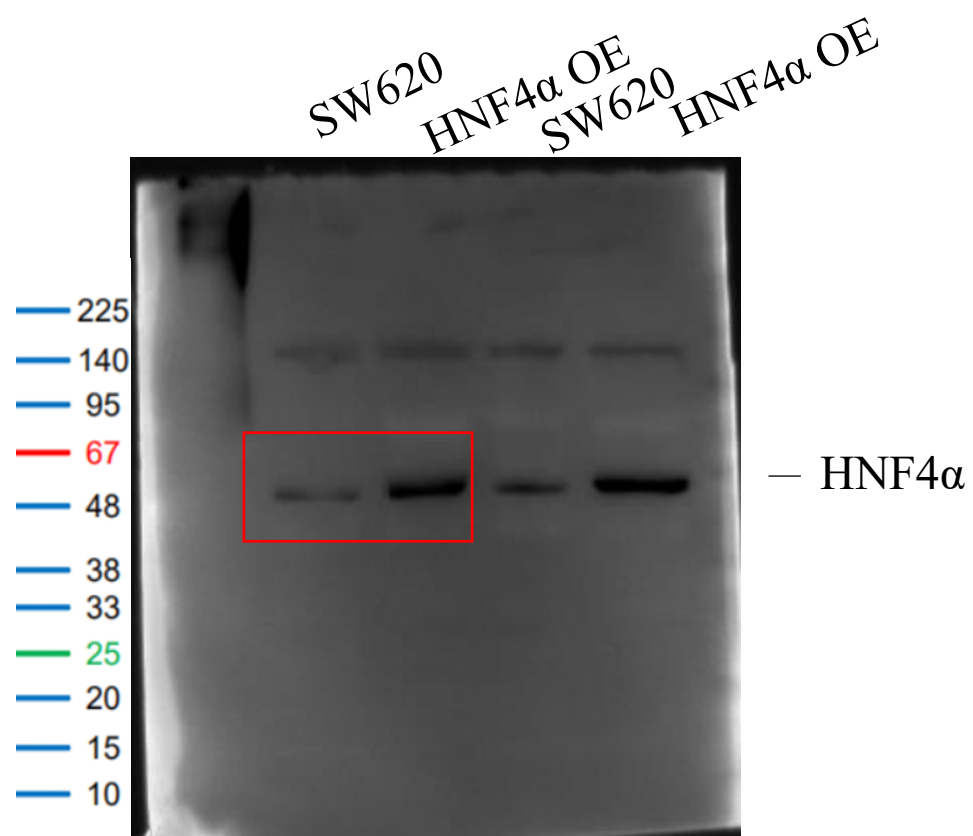
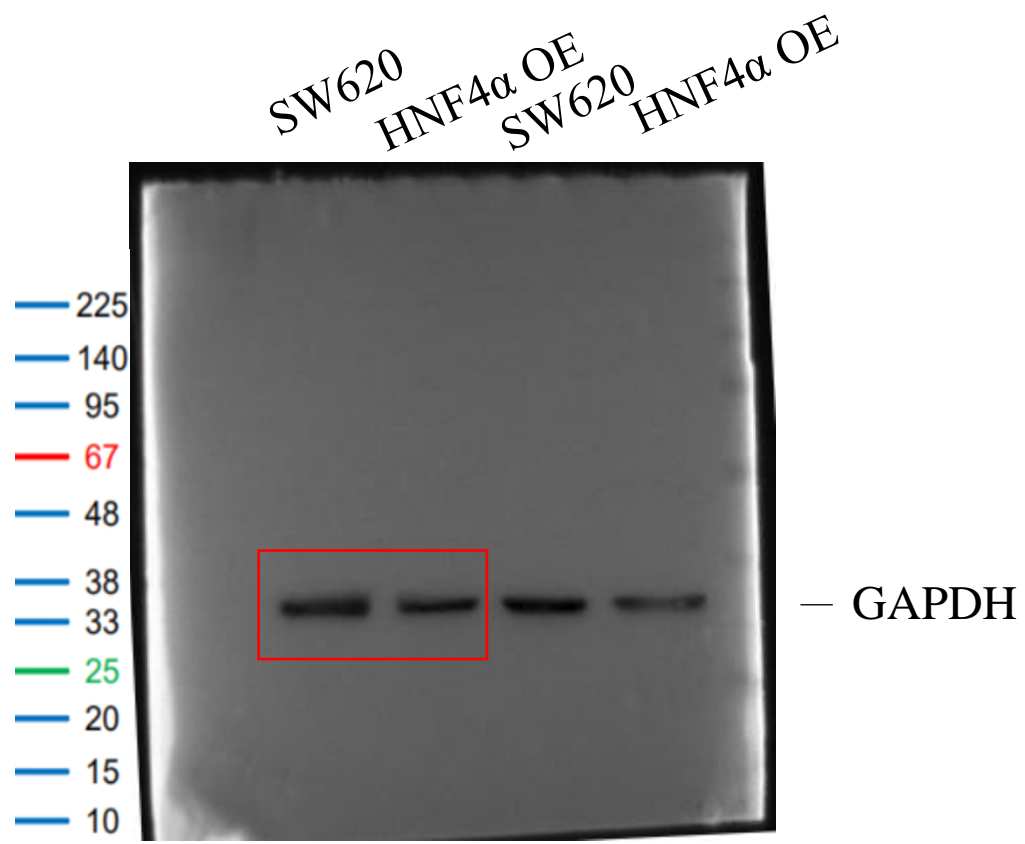


Fig 2C right



Protein separation was performed using duplicate 10% SDS-polyacrylamide gels to resolve bands with closely spaced molecular weights.

Fig 2G

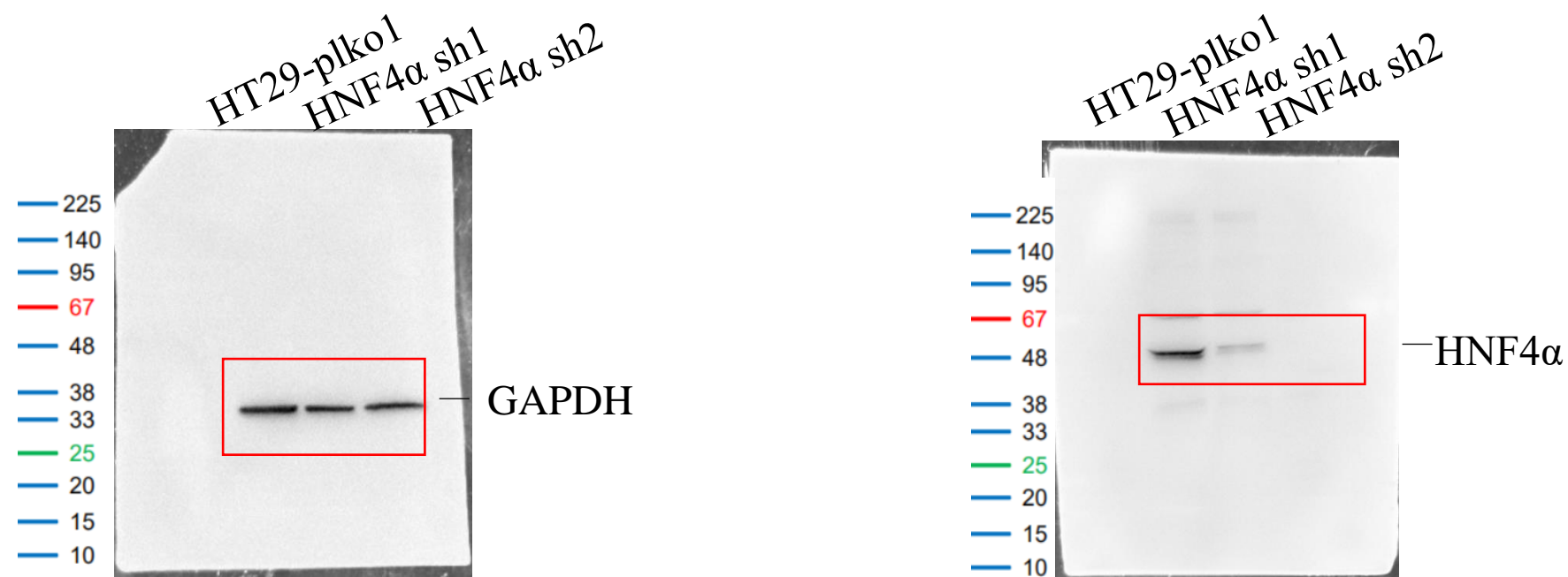
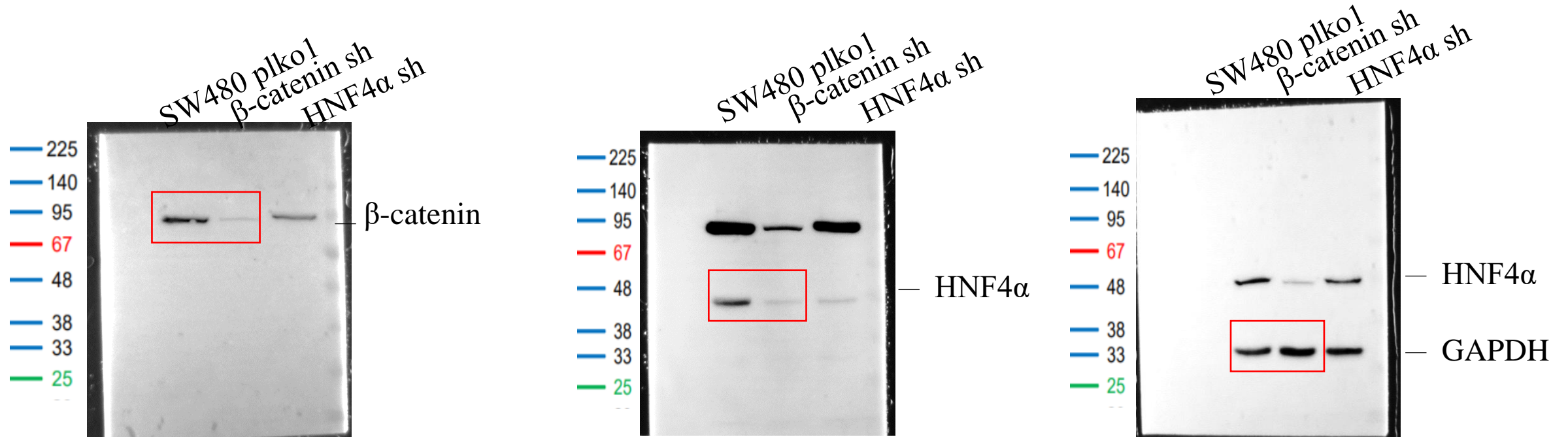


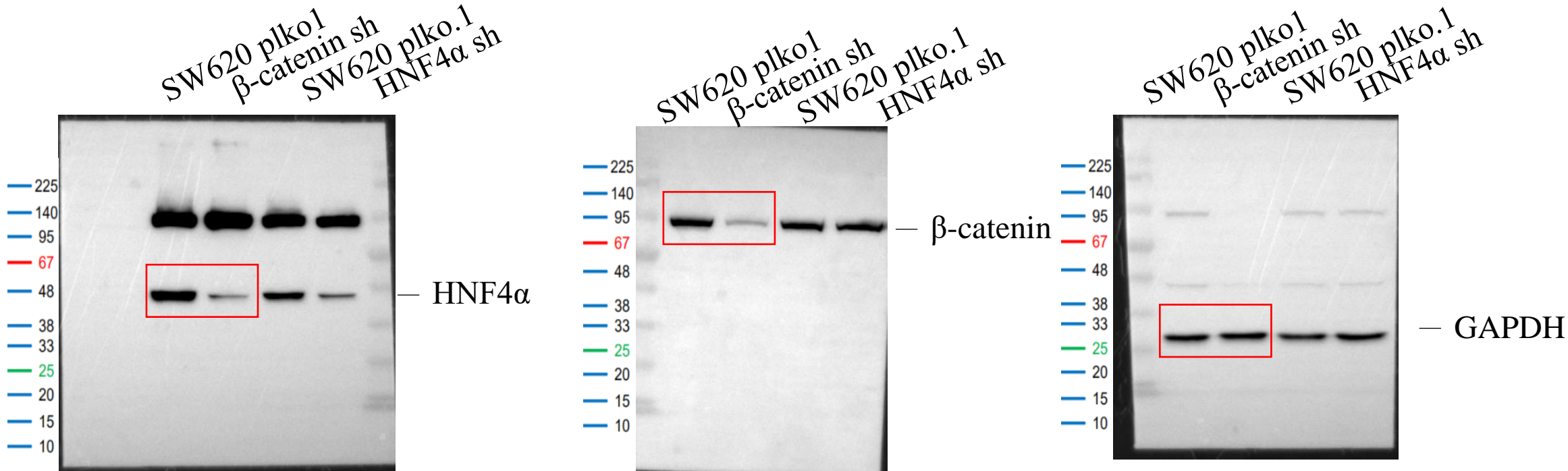
Fig 3D



10% SDS polyacrylamide gel was used for protein separation.

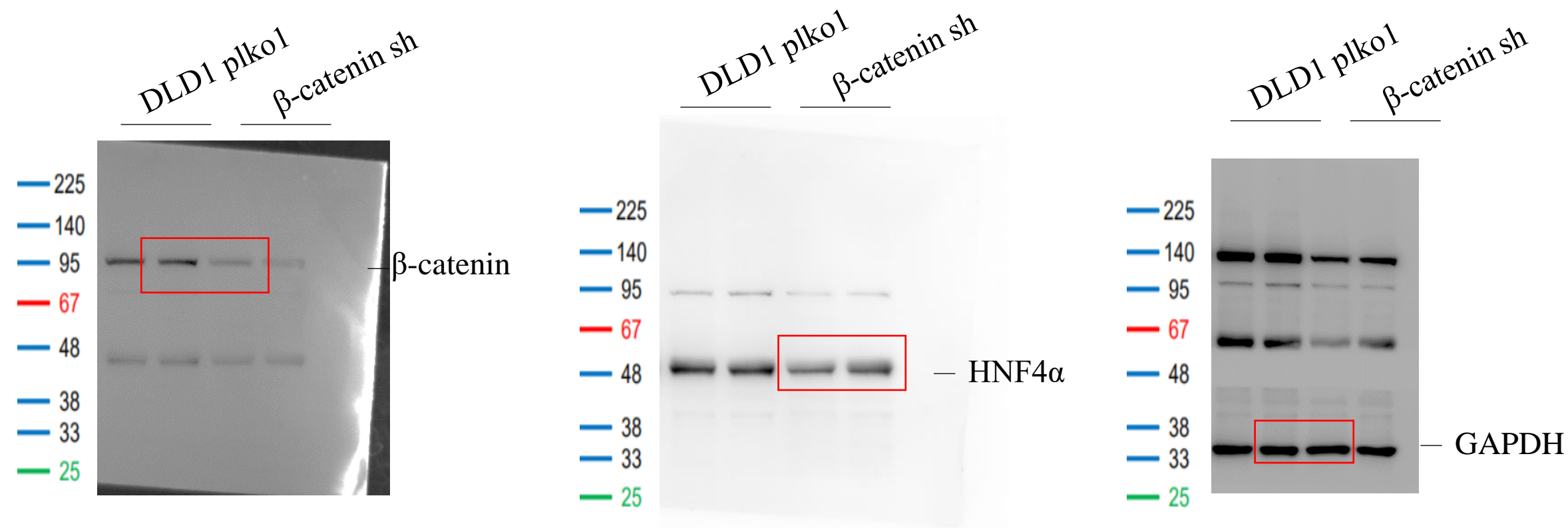


Fig 3D



Protein separation was performed using duplicate 10% SDS-polyacrylamide gels to resolve bands with closely spaced molecular weights.

Fig 3D



10% SDS polyacrylamide gel was used for protein separation.

Fig 3G

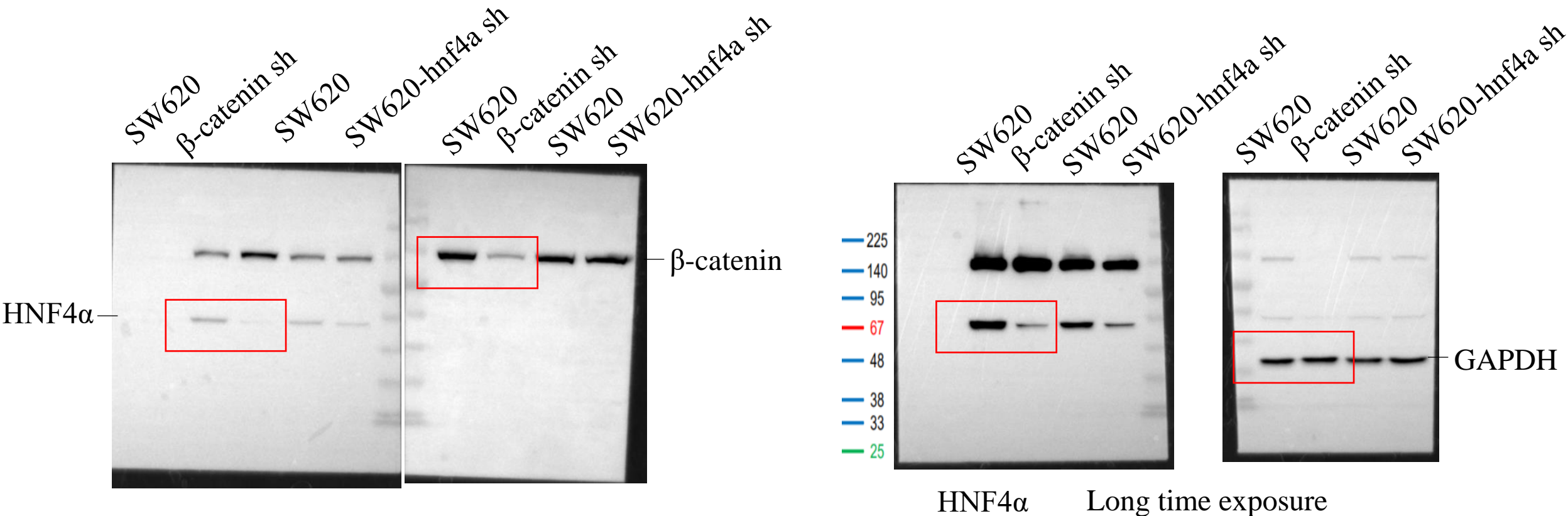
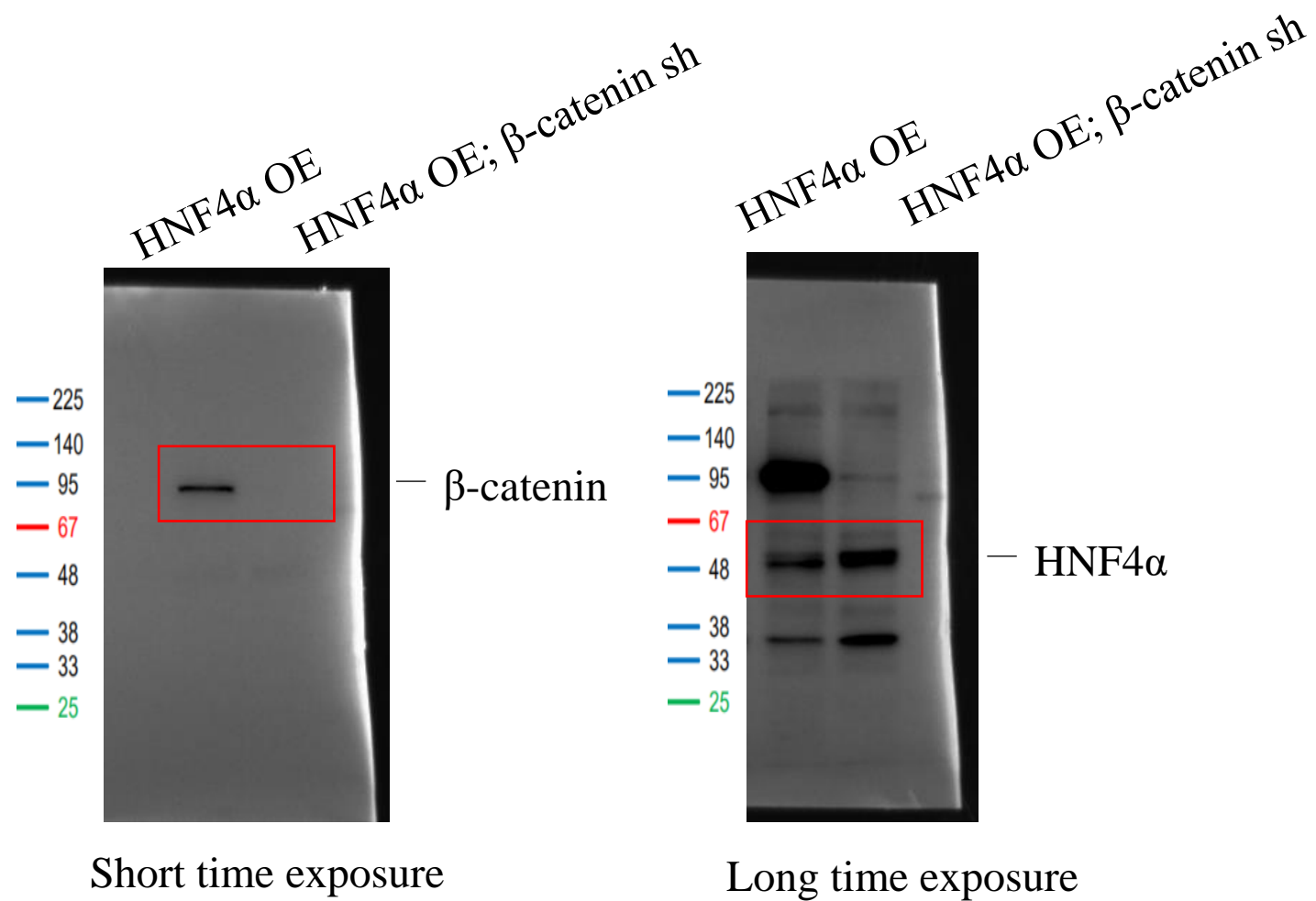
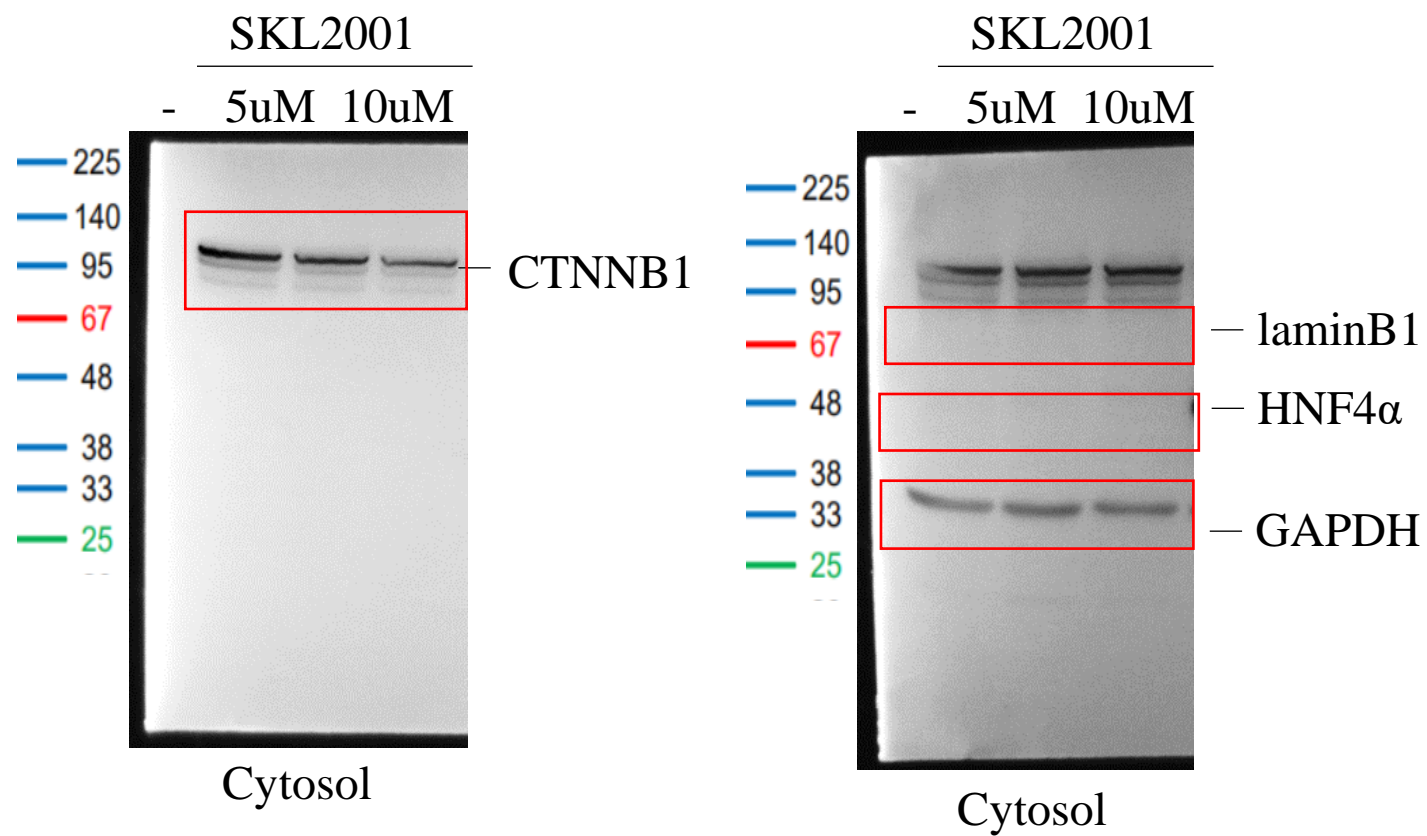


Fig 3G



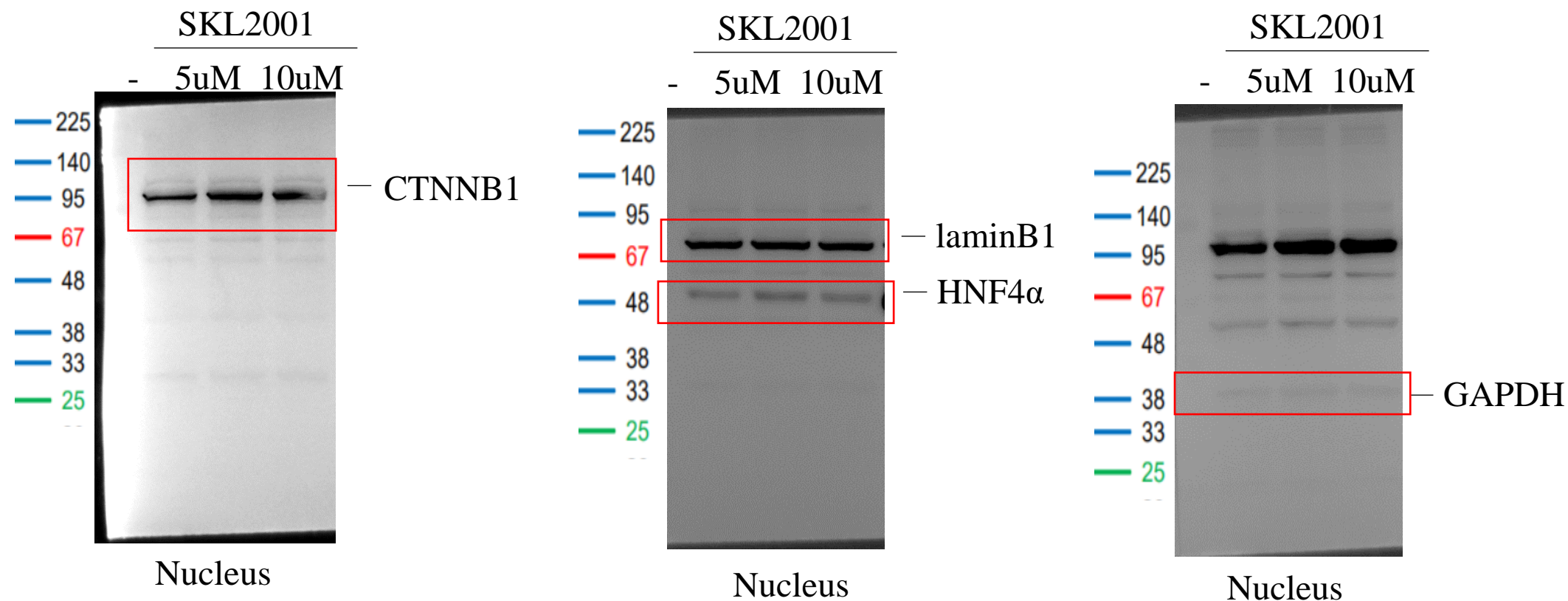
10% SDS polyacrylamide gel was used for protein separation.

Fig 3E



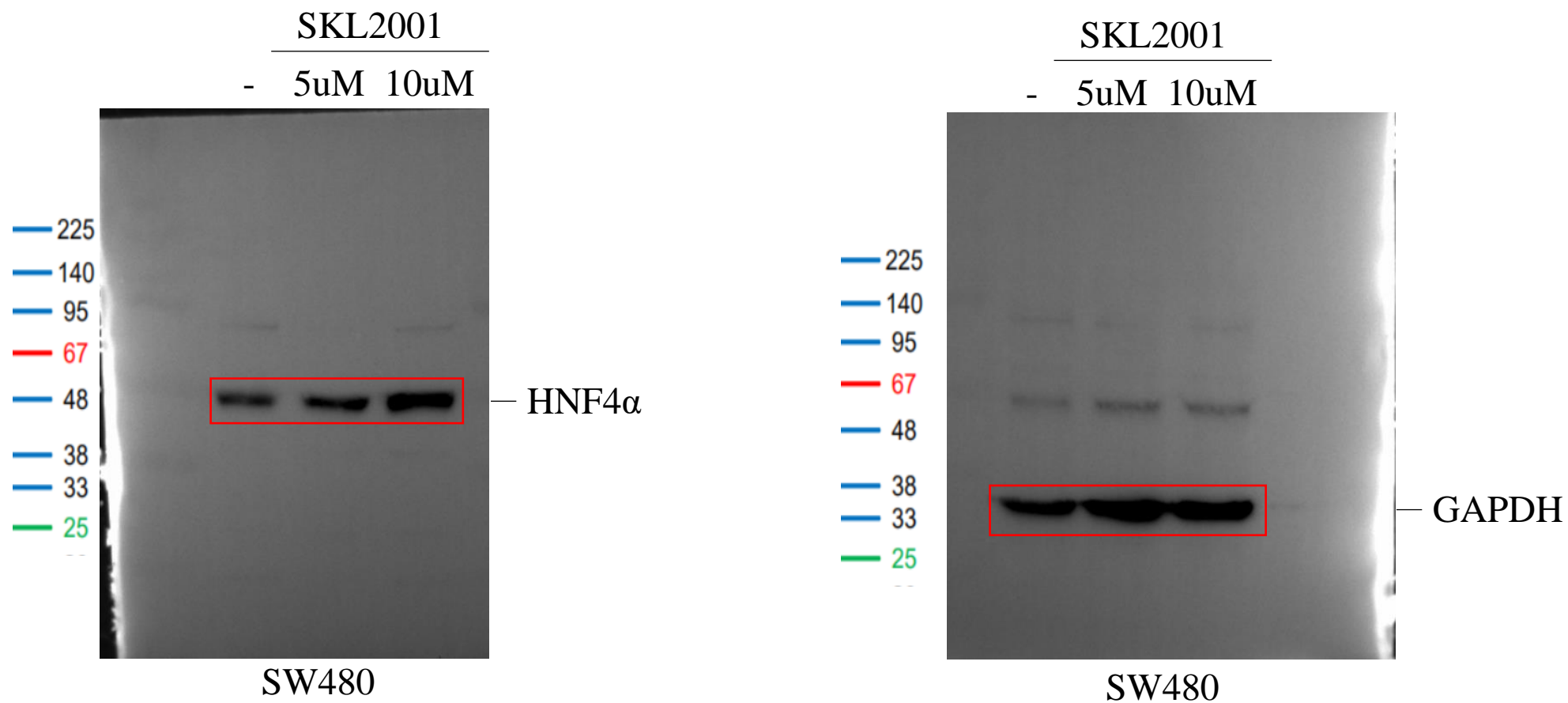
10% SDS polyacrylamide gel was used for protein separation.

Fig 3E



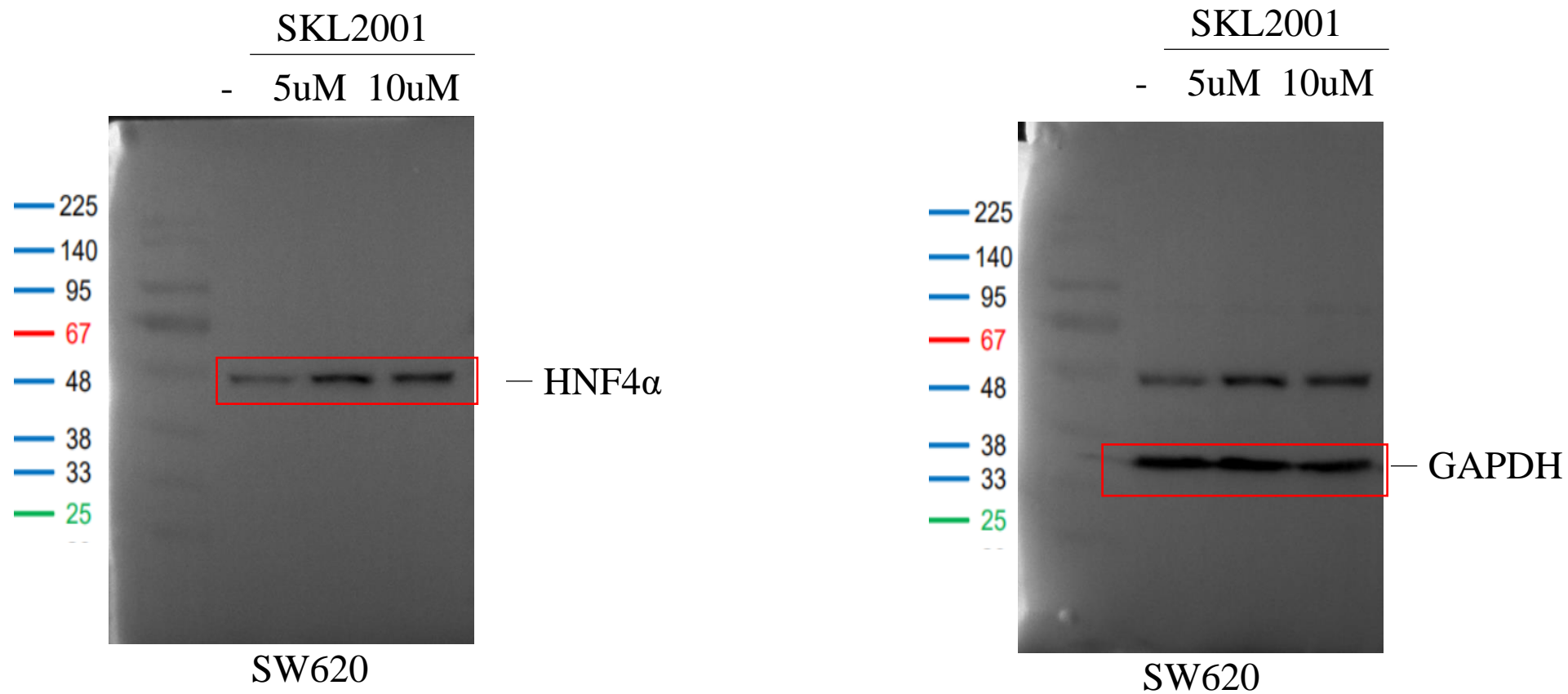
10% SDS polyacrylamide gel was used for protein separation.

Fig 3F



10% SDS polyacrylamide gel was used for protein separation.

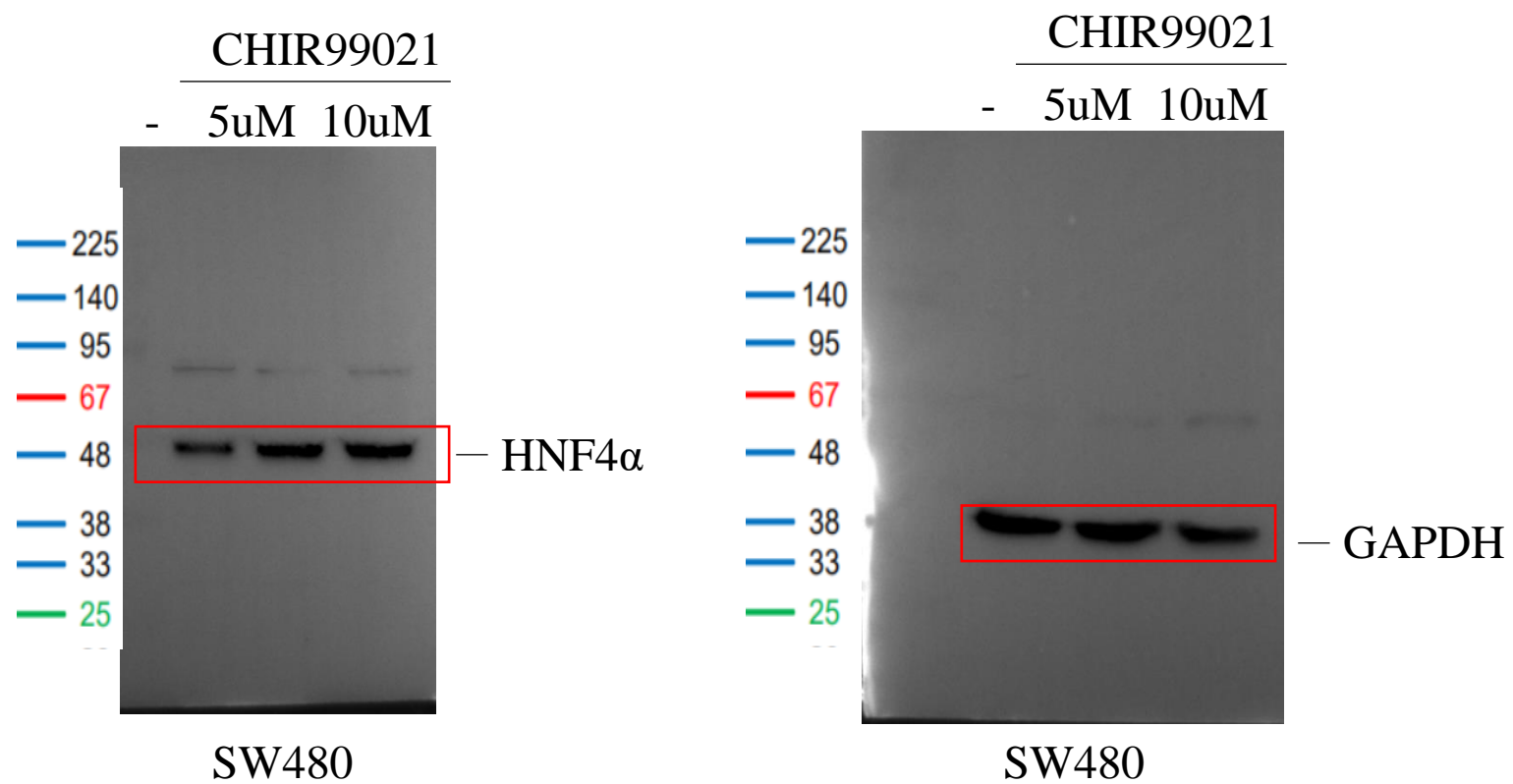
Fig 3F



10% SDS polyacrylamide gel was used for protein separation.

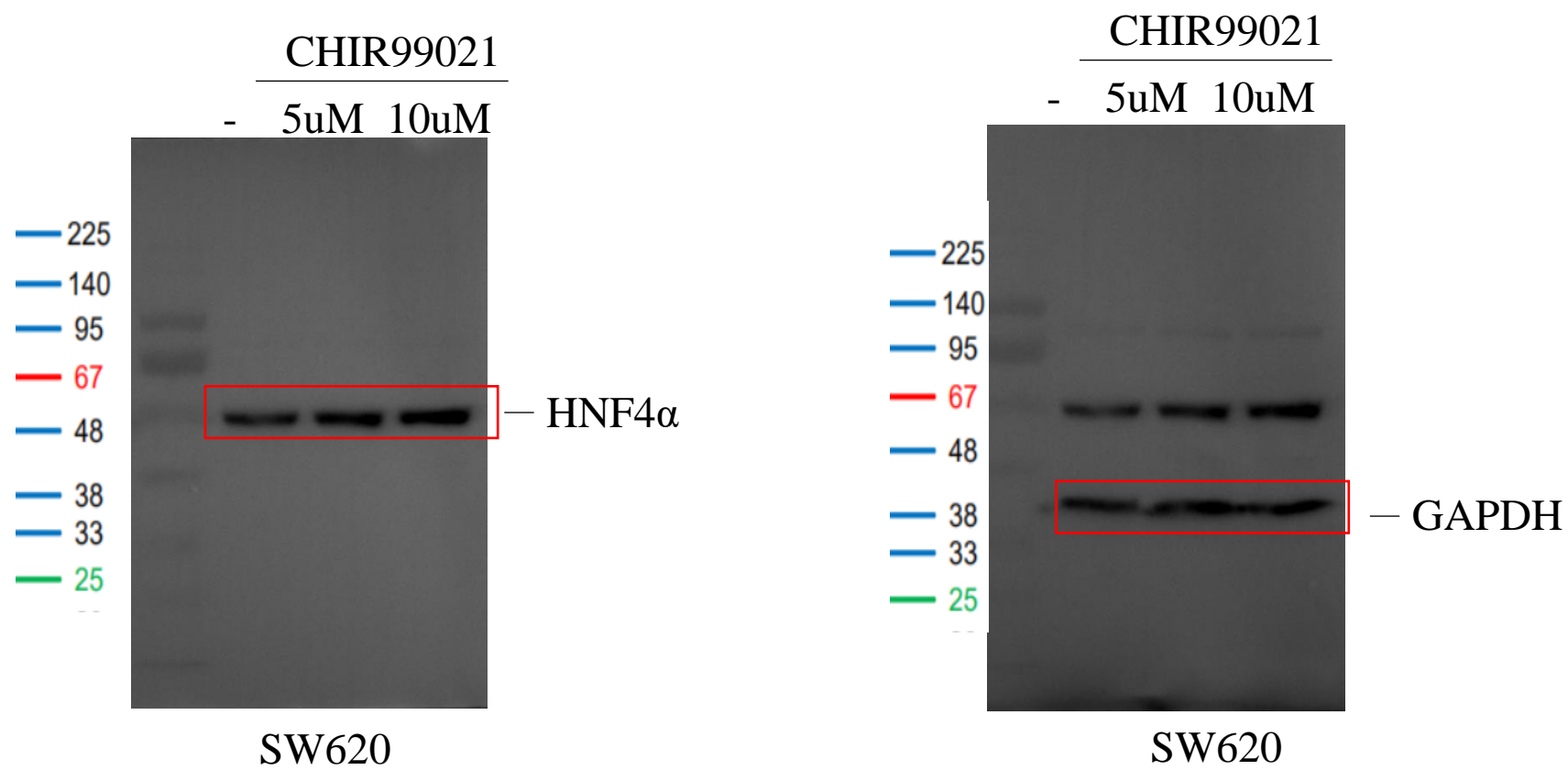


Fig 3F



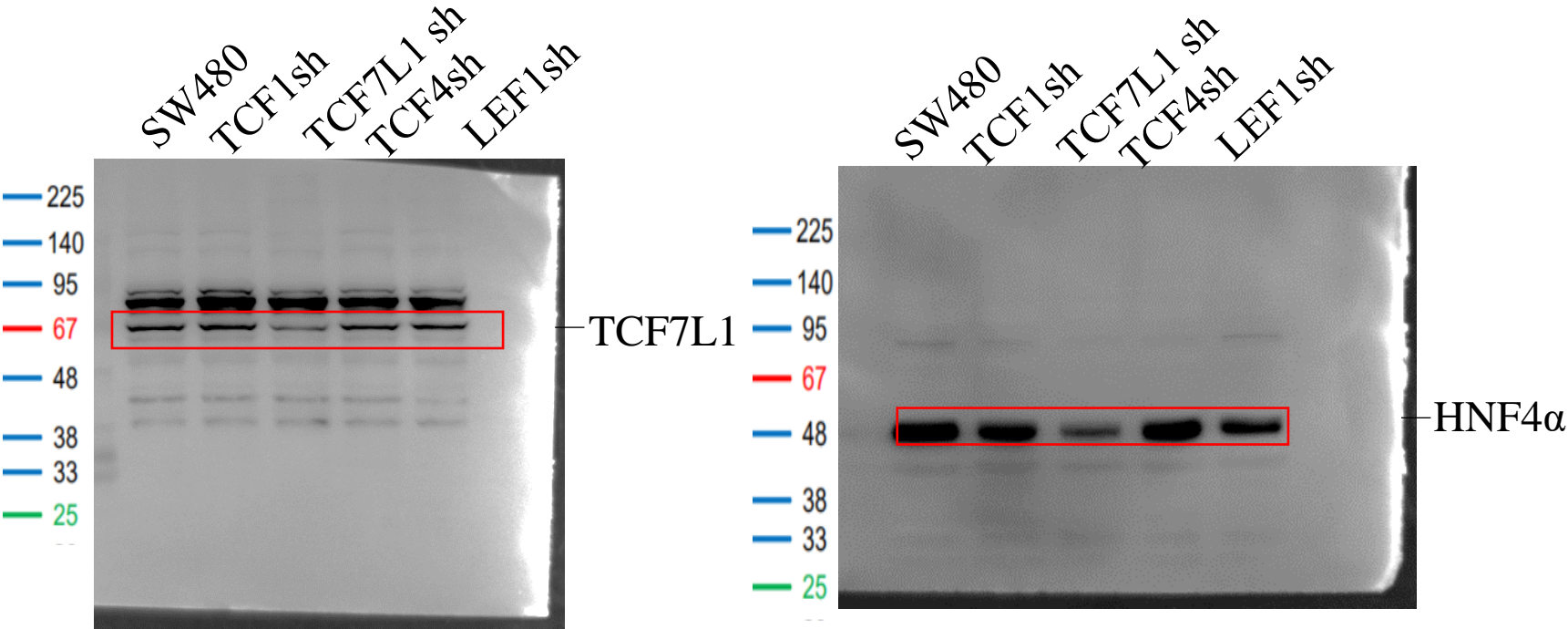
10% SDS polyacrylamide gel was used for protein separation.

Fig 3F



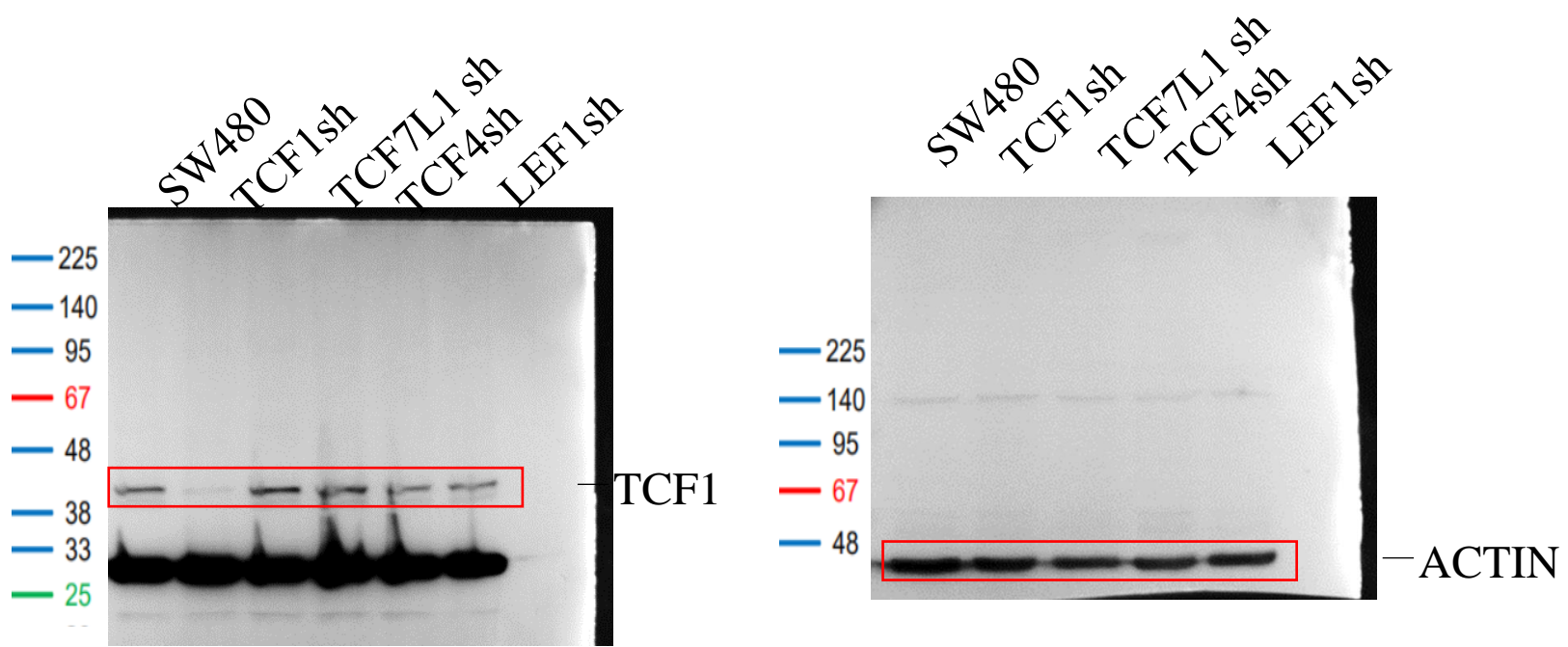
10% SDS polyacrylamide gel was used for protein separation.

Fig 4E



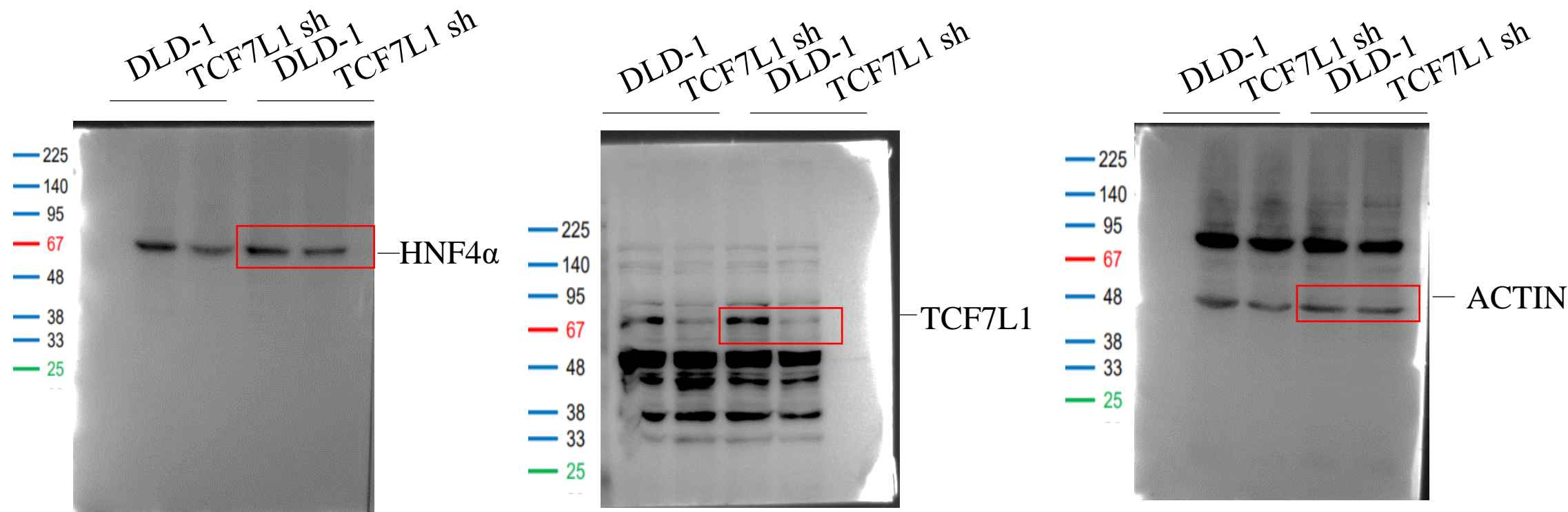
10% SDS polyacrylamide gel was used for protein separation.

Fig 4E



10% SDS polyacrylamide gel was used for protein separation.

Fig 4G



Protein separation was performed using duplicate 10% SDS-polyacrylamide gels to resolve bands with closely spaced molecular weights.

Fig 4G

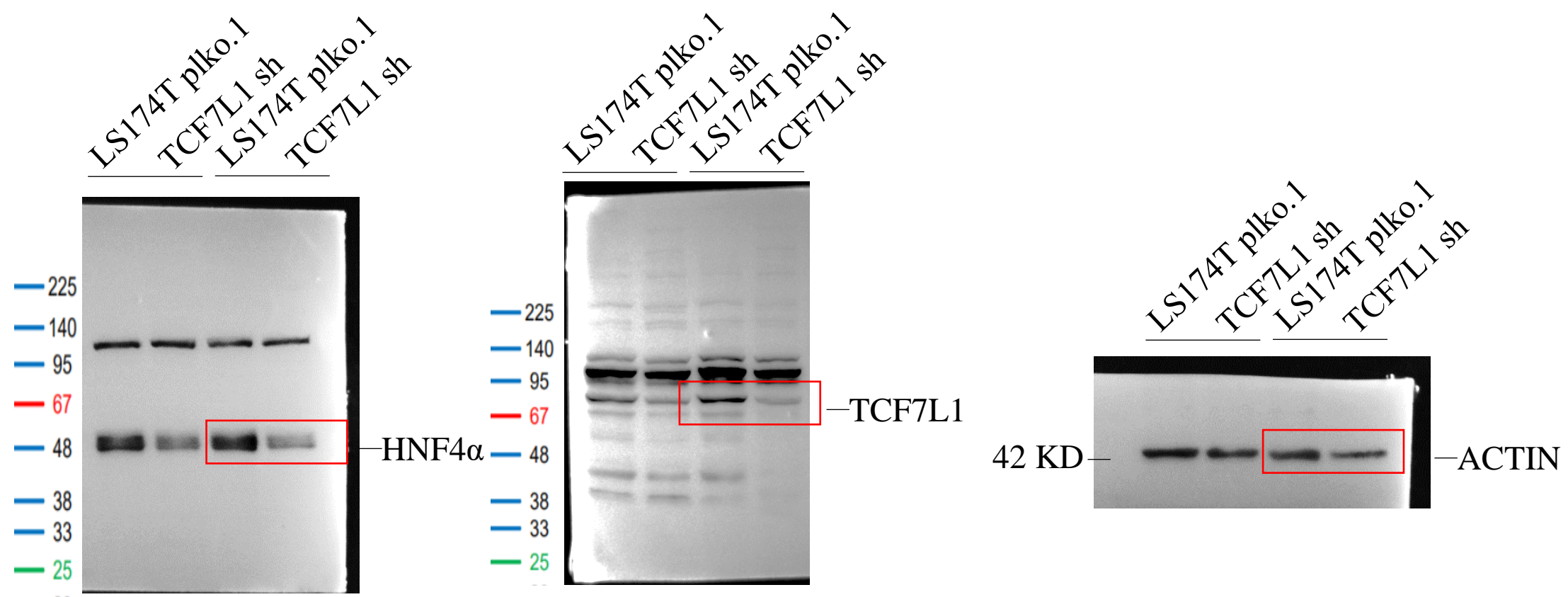


Fig 4H

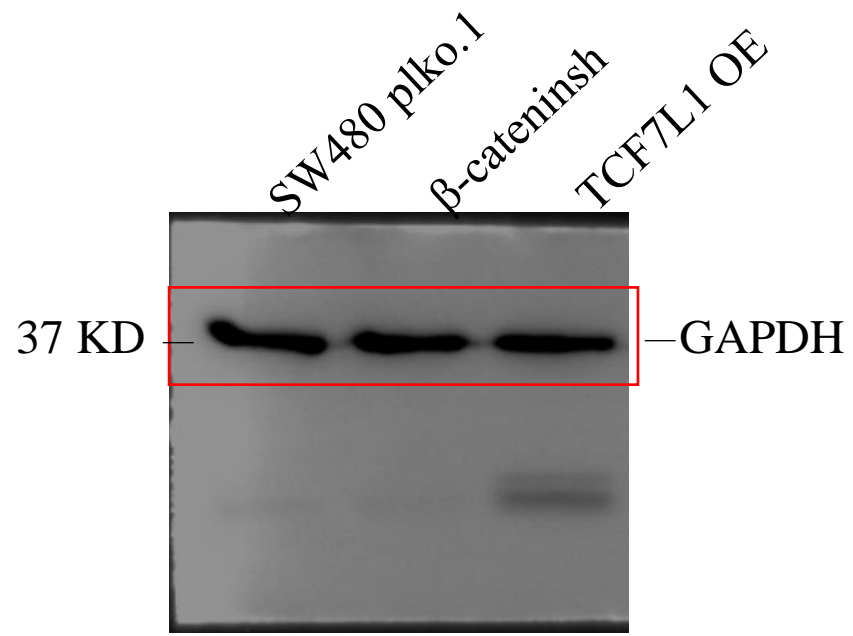
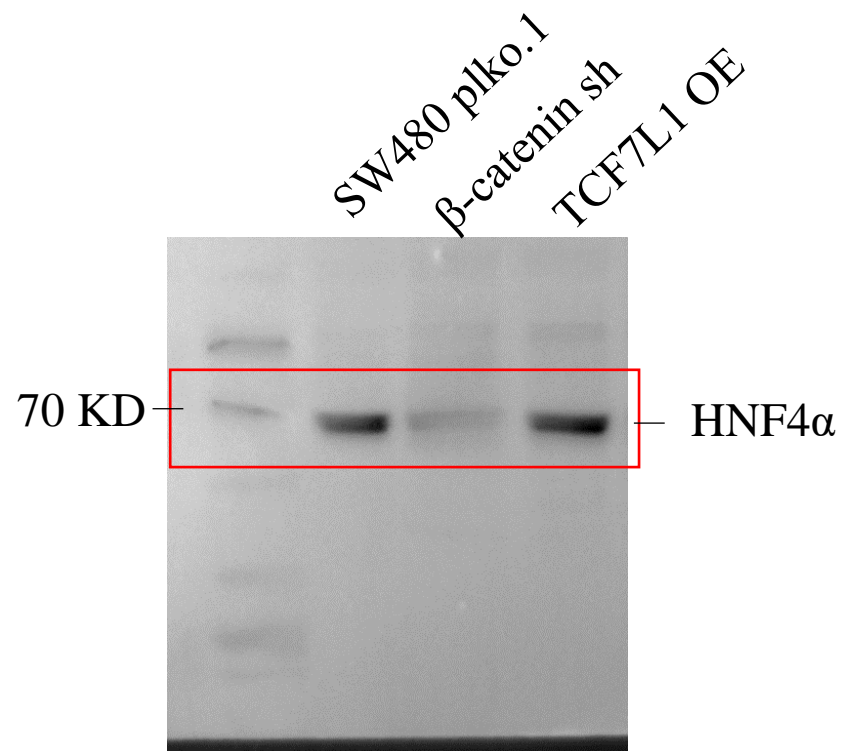
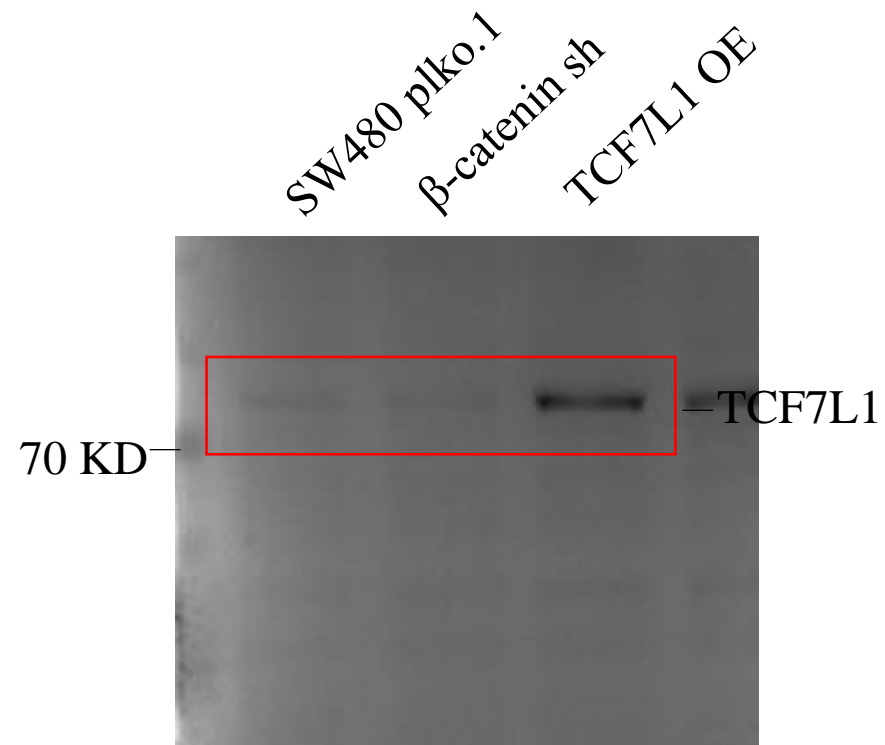
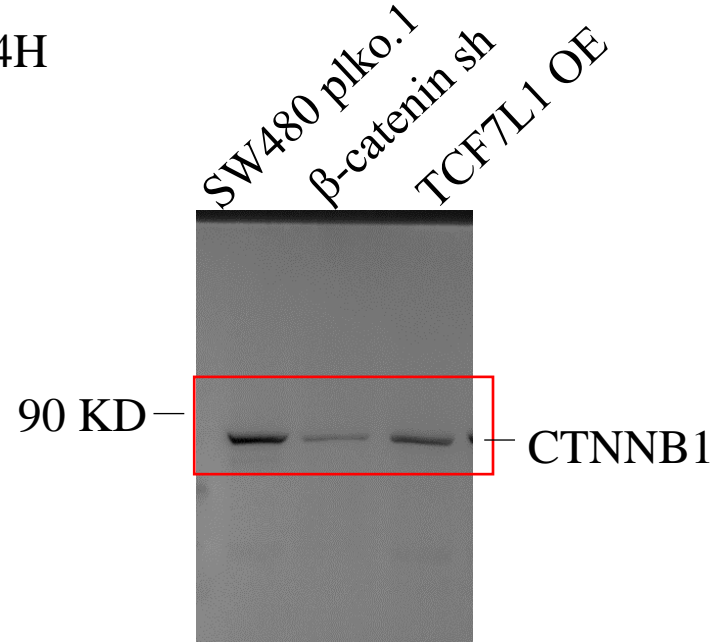




Fig 4I

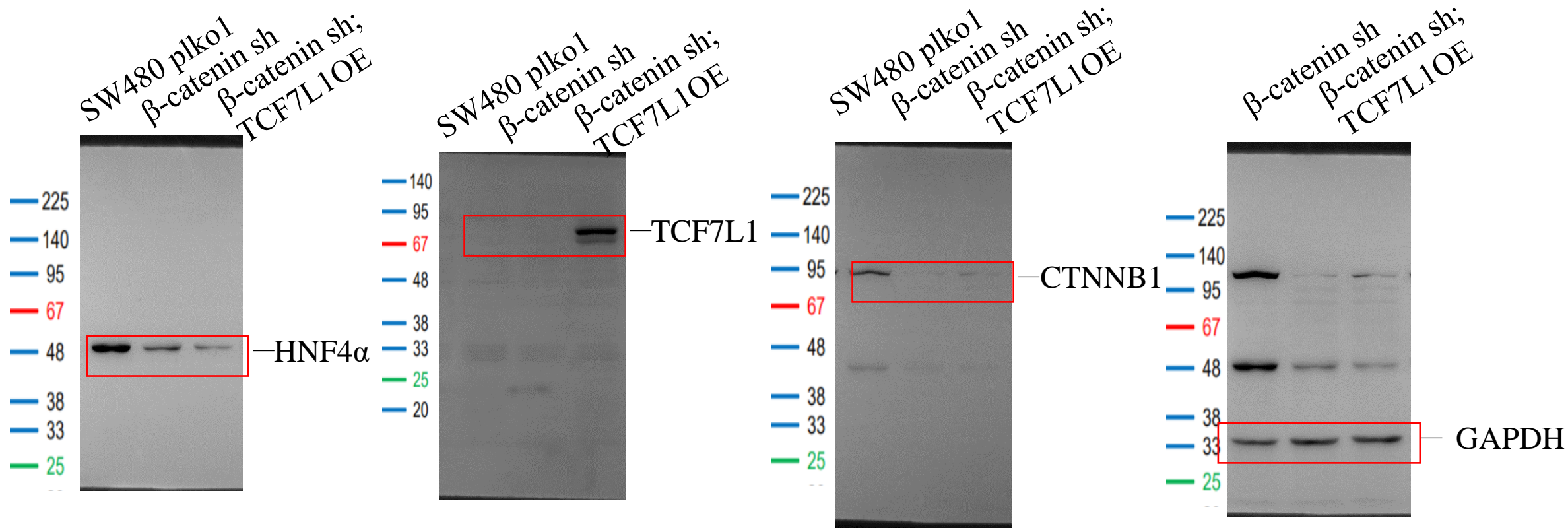
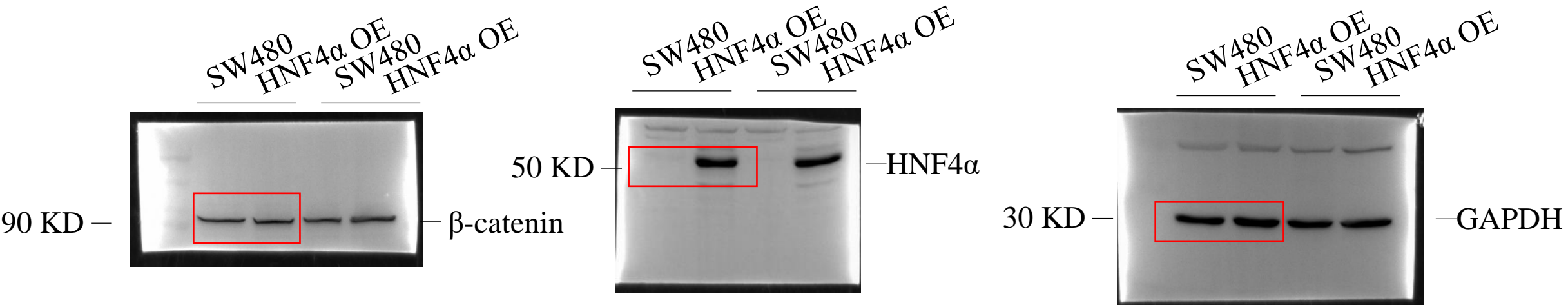


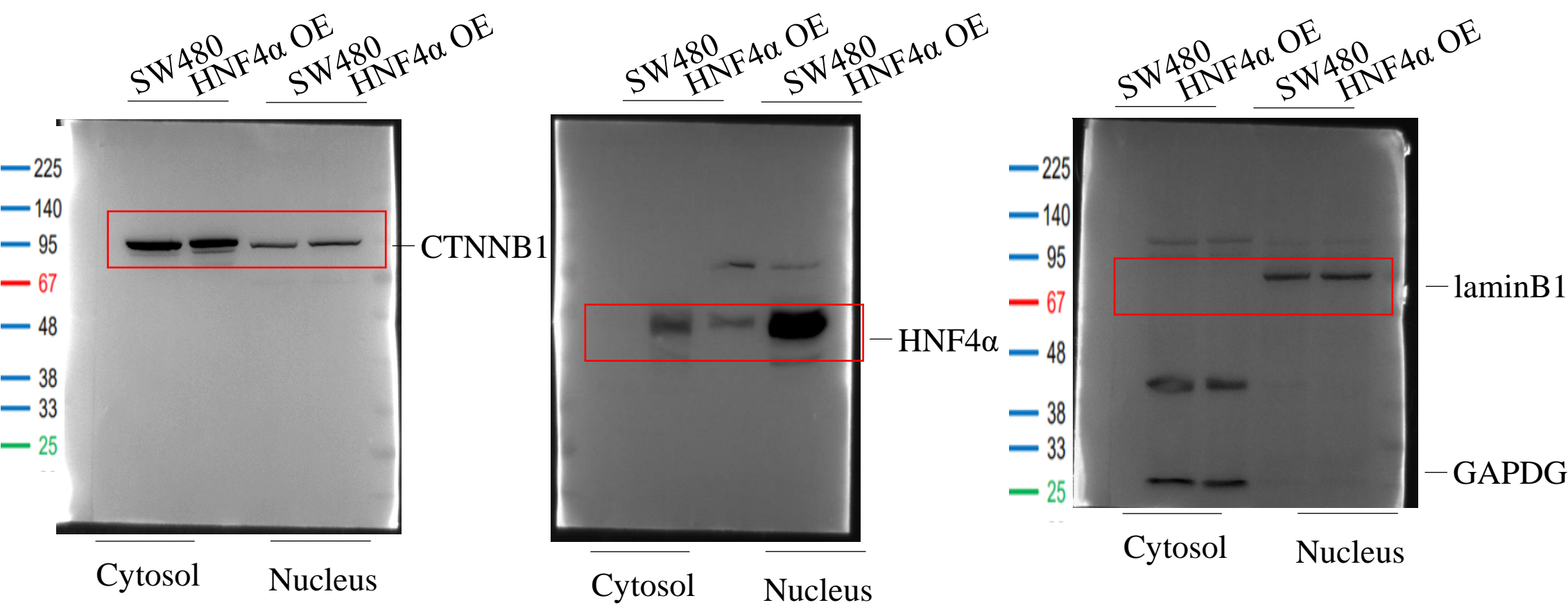


Fig 6E



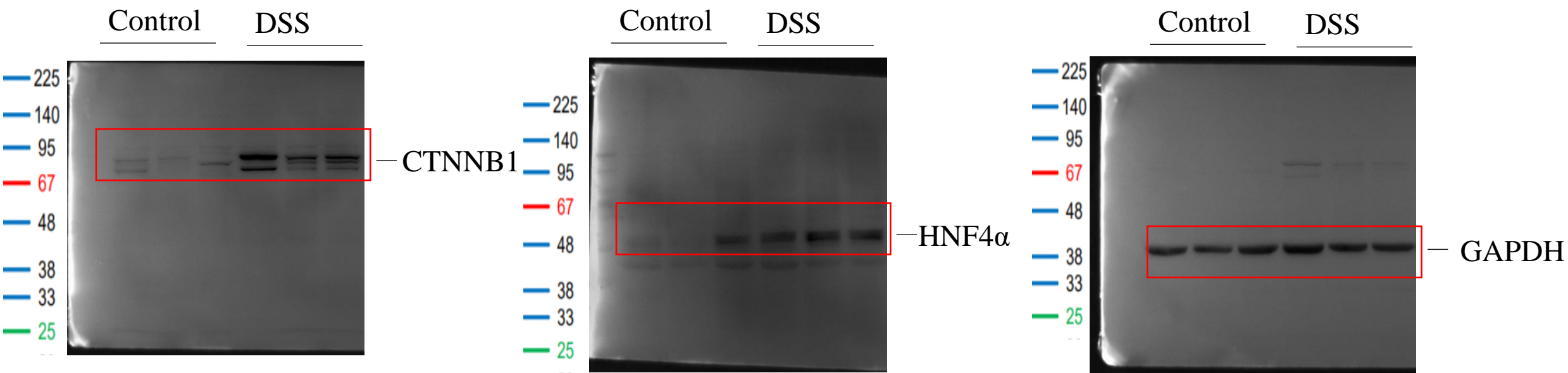
10% SDS polyacrylamide gel was used for protein separation.

Fig 6F



10% SDS polyacrylamide gel was used for protein separation.

Fig 7G



10% SDS polyacrylamide gel was used for protein separation.