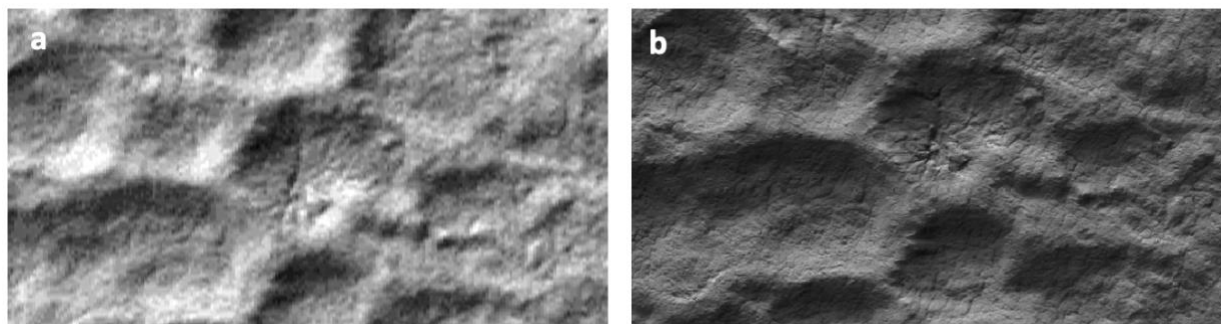


Lake Stars as an Earth Analog for Europa's Manannán Crater Spider Feature

Supplementary Information



Supplementary Figure 1: Image of a Martian spider at -87.95°N , 91.726°E showing how a dendritic spider pattern might appear 'asterisk-like' at lower resolutions. (a) shows an example of a spider (300 m in diameter) in the Murray Lab CTX global mosaic (6km/pixel) and (b) shows the spider in a HiRISE image (25 cm/pixel)

ID	Target MgSO_4 Conc. [wt.%]	Actual MgSO_4 Conc. [wt. %]	Avg. Grain Diameter [μm]
DIWICE-076-000	0.0	N/A	317 ± 127
DIWICE-147-000	0.0	N/A	222 ± 93
MGSO4ICE-009/010-000	2.3	3.2 ± 0.1 (n = 6)	$169 - 218 \pm 140$

Supplementary Table 1: Granular ice grain diameter and concentration.