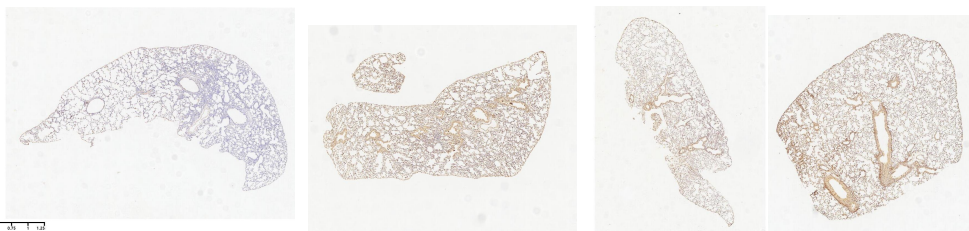
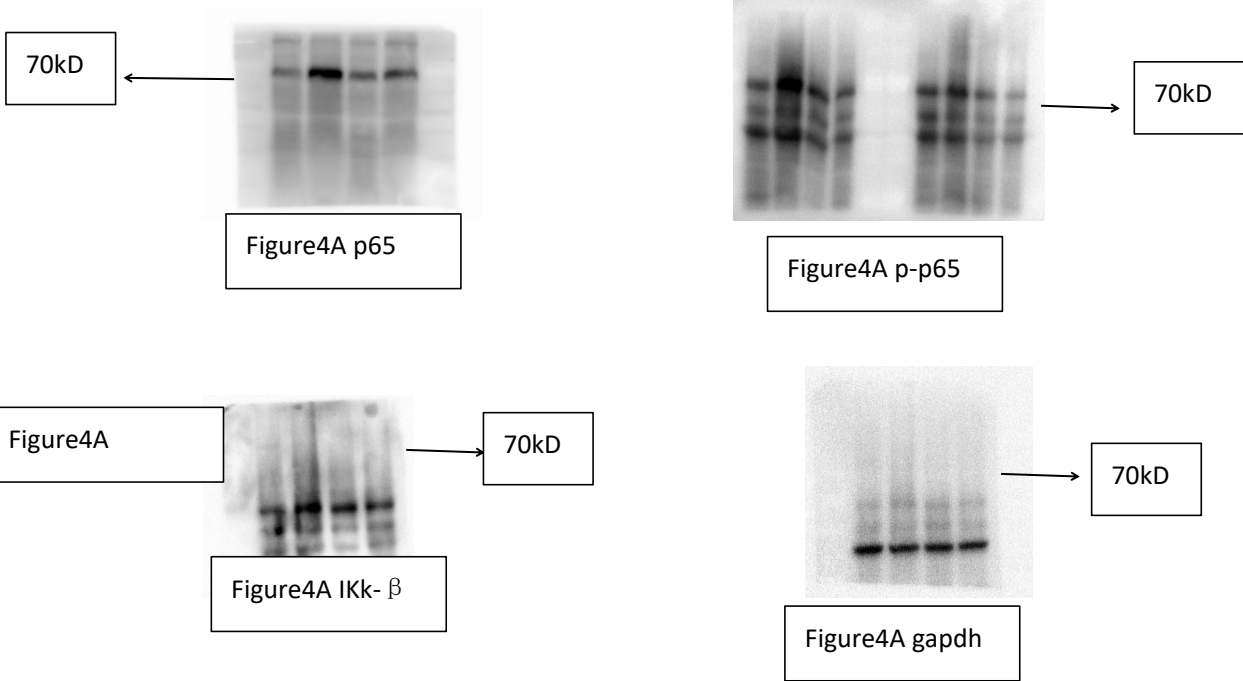
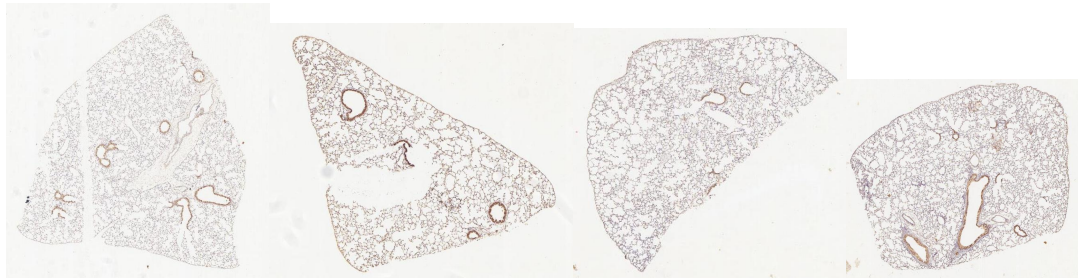


This is the raw data for Figure1A, the corresponding sequence is consistent with the data in the manuscript. Representative immunofluorescence staining of ZO-1 and Claudin-1 was observed through an oil lens, and FigureC/D was the image with the largest field of view without electronic scanning.

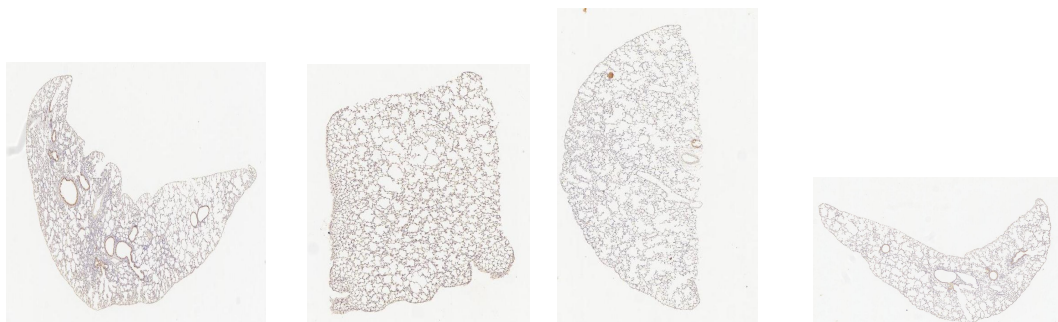


This is the raw data for Figure2A, the corresponding sequence is consistent with the data in the manuscript.





This is the raw data for Figure4B, the corresponding sequence is consistent with the data in the manuscript.



This is the raw data for Figure4C, the corresponding sequence is consistent with the data in the manuscript.

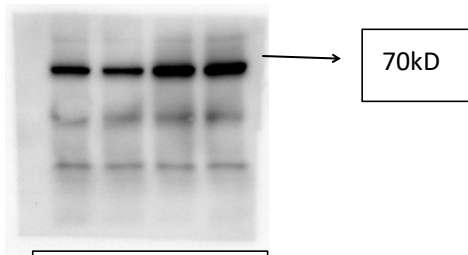


Figure4D Nrf2

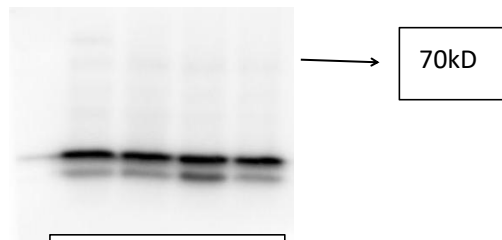


Figure4D HO-1

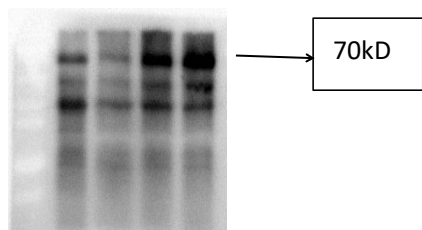


Figure4D NQO-1

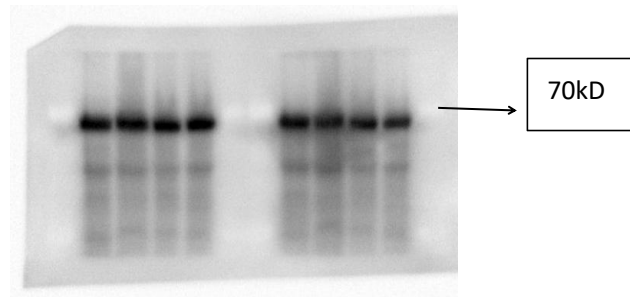
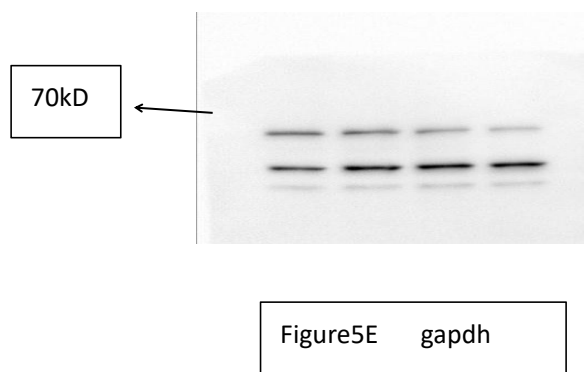
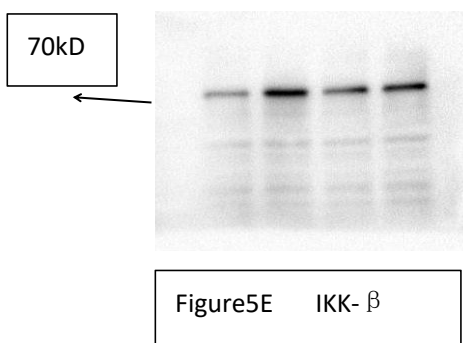
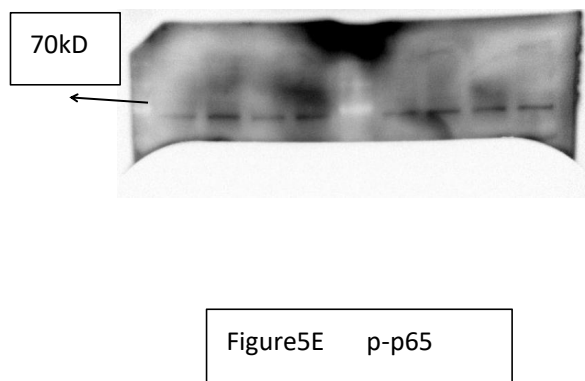
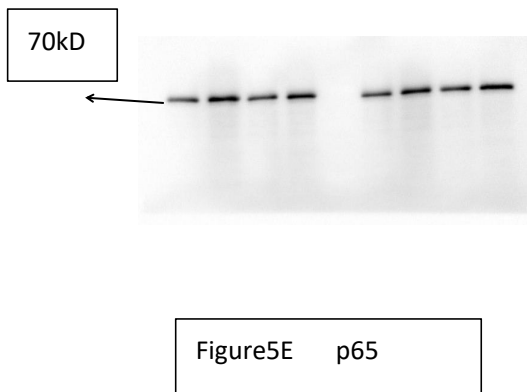
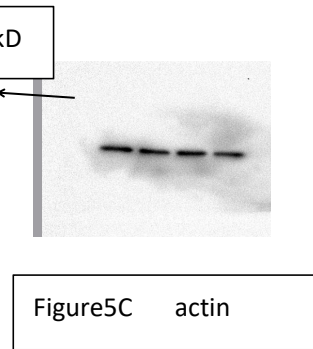
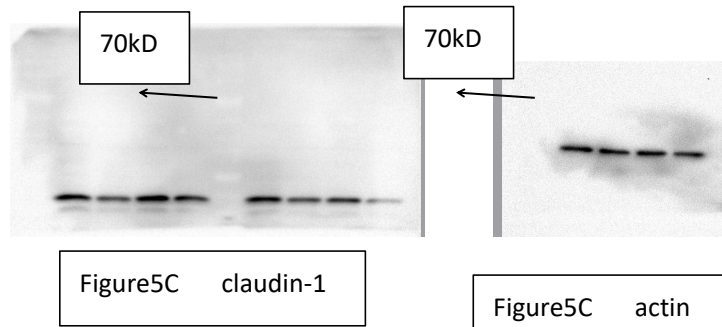
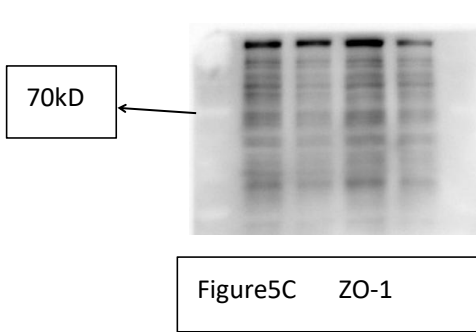
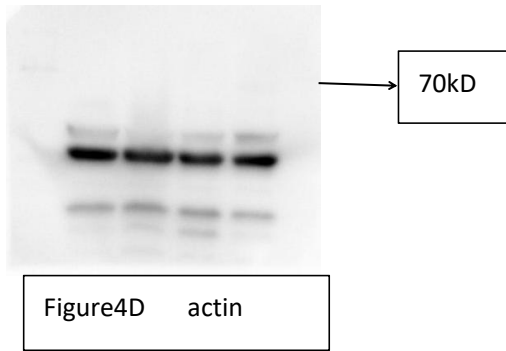


Figure4D Keap-1



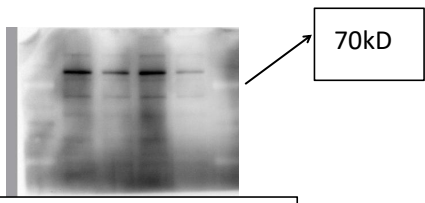


Figure5G Nrf2

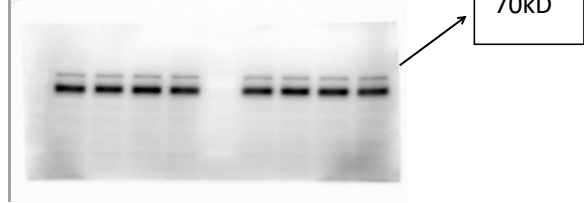


Figure5G keap-1

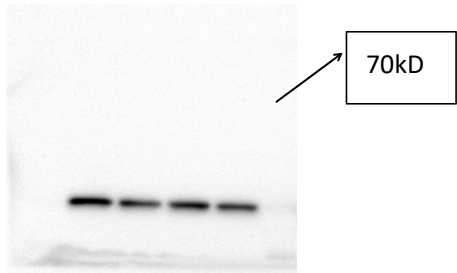


Figure5G HO-1

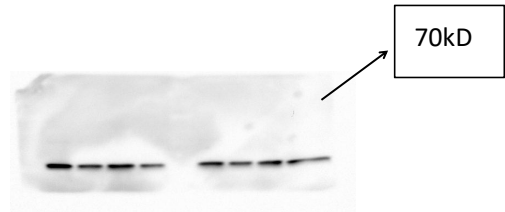


Figure5G NQO-1

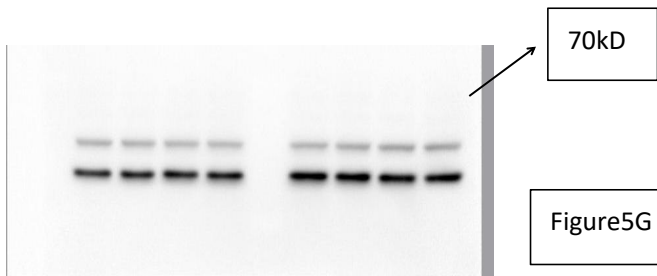
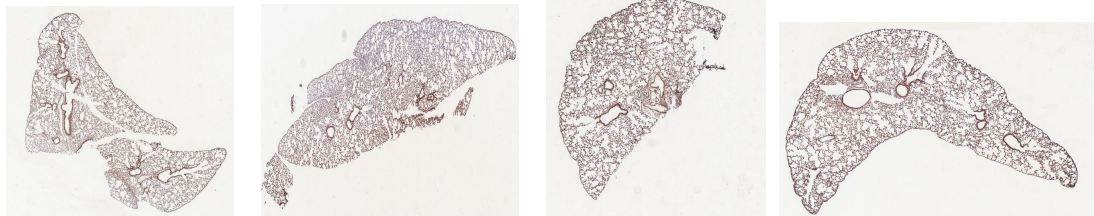
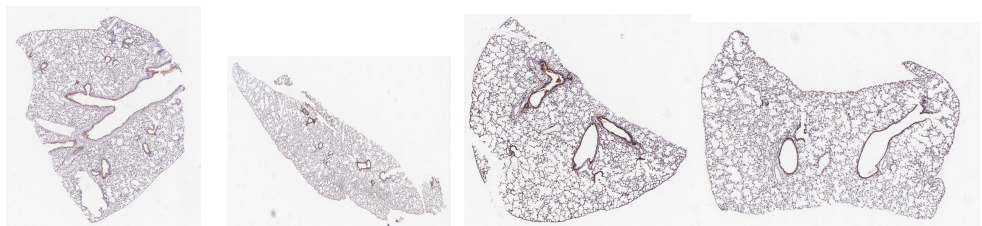


Figure5G actin



This is the raw data for Figure4E, the corresponding sequence is consistent with the data in the manuscript.



This is the raw data for Figure4F, the corresponding sequence is consistent with the data in the manuscript.