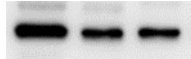
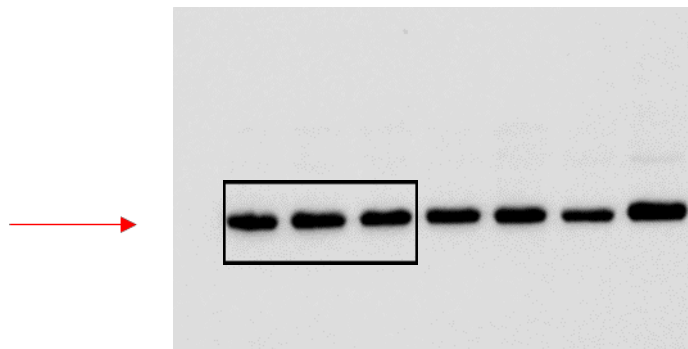
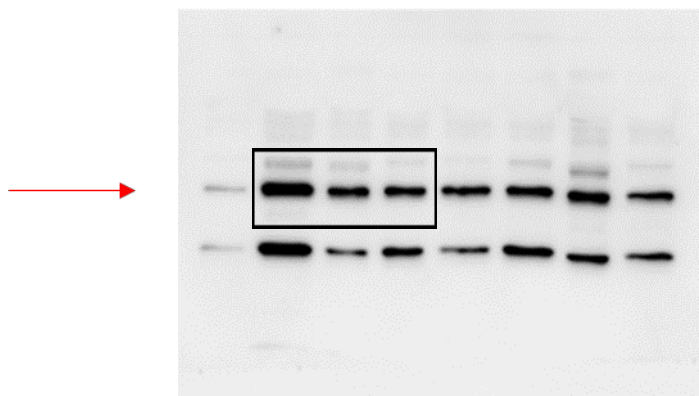
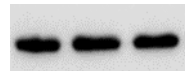


A full scan of the entire original gel of blots for eNOS, iNOS, CSE, CBS and TNF α . On the original blots, there is an indication of which band we evaluated (iNOS, eNOS and TNF-alpha presented more than one band, indicate the band analyzed), moreover the first three columns in each blot belong to the groups in the order: SHR, SHR+HFD, SHR+HFD+GY. For evaluation of samples, we used Protein standard. According to the molecular weight of the manufacturer of the antibody followed by reference band we evaluated individual samples. Protein concentration used for WB – 20 μ g/well. Since we re-probe the membrane for more proteins, we decided to use 12% gel instead 7.5%

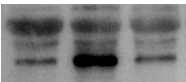
eNOS,140kDA



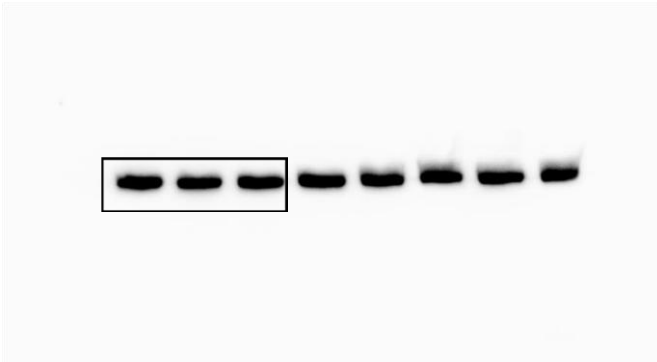
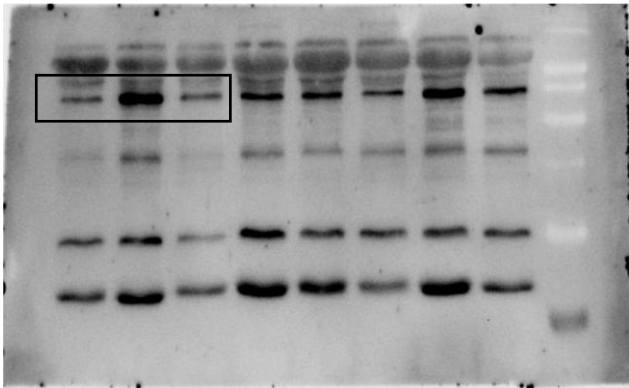
β -actin, 42 kDA



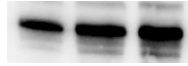
iNOS 130 kDA



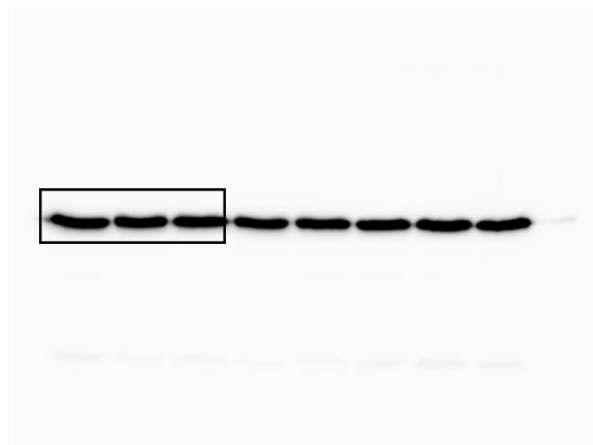
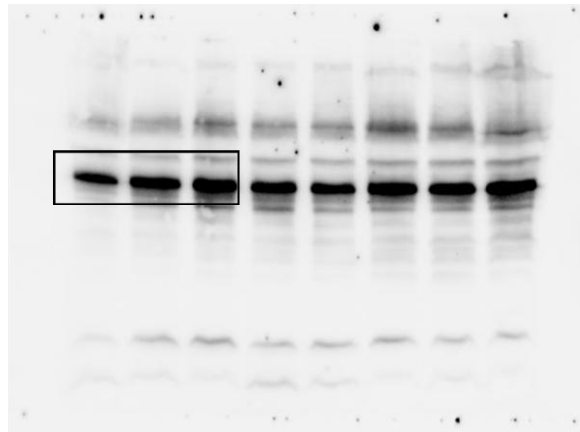
β -actin, 42 kDA



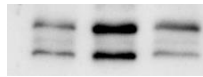
CSE, 42 kDA



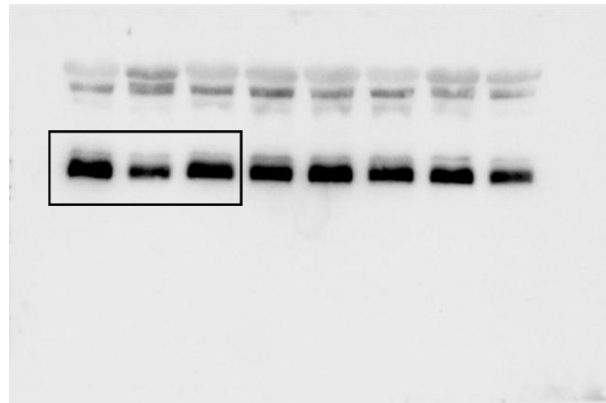
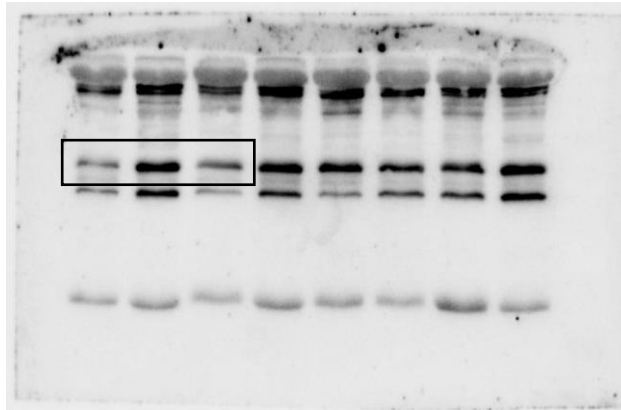
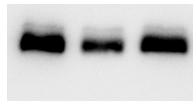
β -actin, 42 kDA



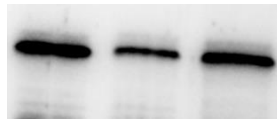
TNF- α , 22 kDA



β -actin, 42 kDA



CBS, 61 kDA



β -actin, 42 kDA

