

# A Bitopic mTORC Inhibitor Reverses Phenotypes in a Tuberous Sclerosis Complex Model

Sulagna Mukherjee<sup>1</sup>, Matthew J. Wolan<sup>1</sup>, Mary K. Scott<sup>1</sup>, Victoria A. Riley<sup>1</sup>, Aidan M. Sokolov<sup>1</sup>, David M. Feliciano<sup>1, 2, 3, \*</sup>

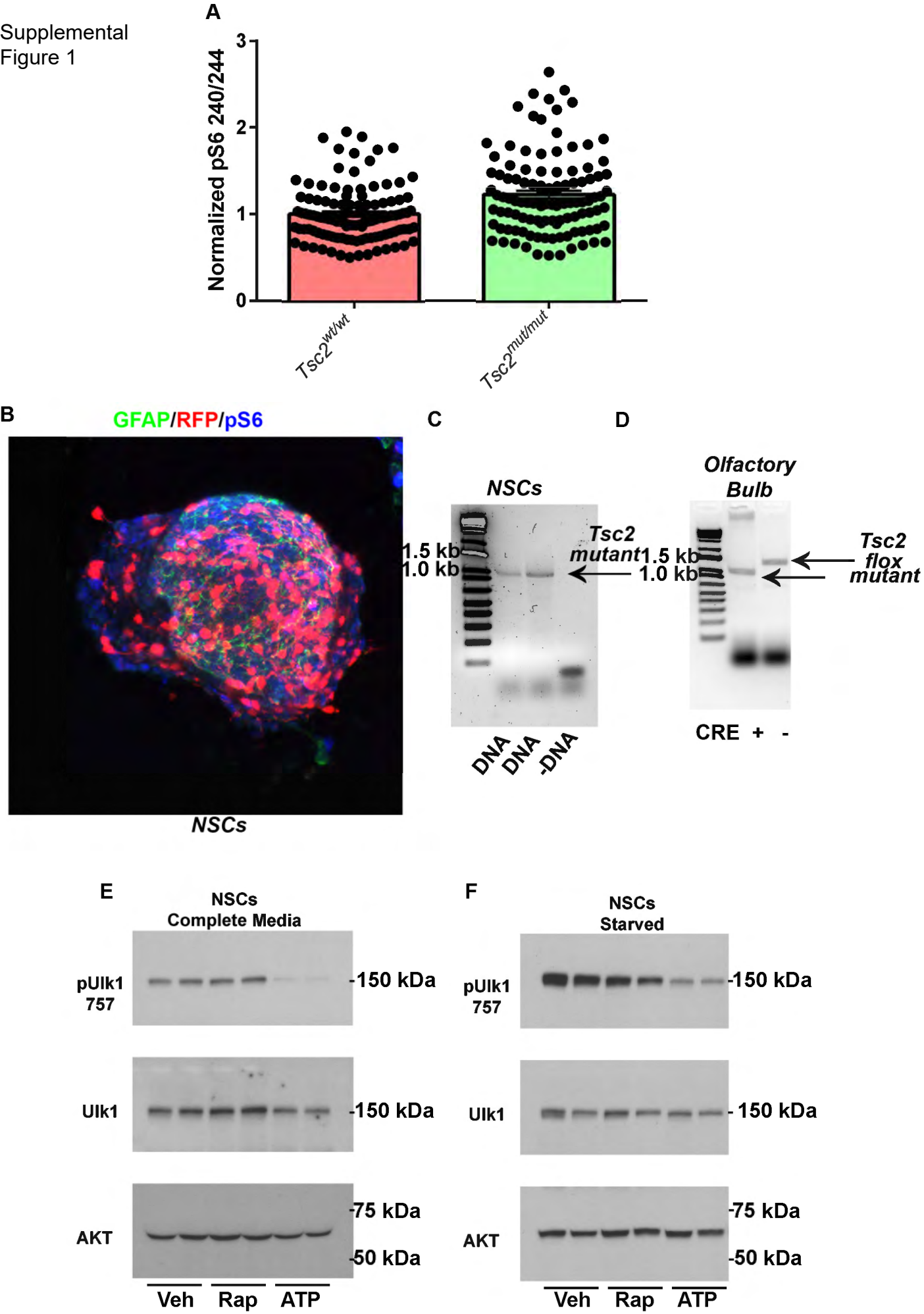
1. Department of Biological Sciences, Clemson University, Clemson, South Carolina, United States of America

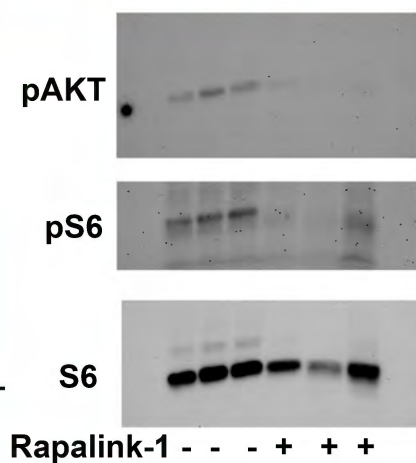
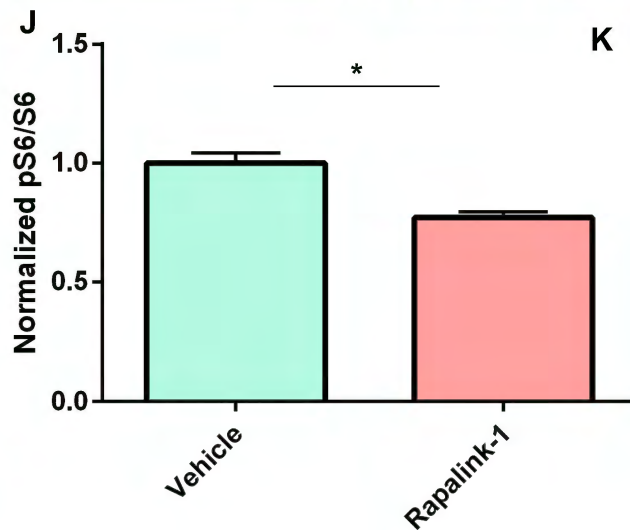
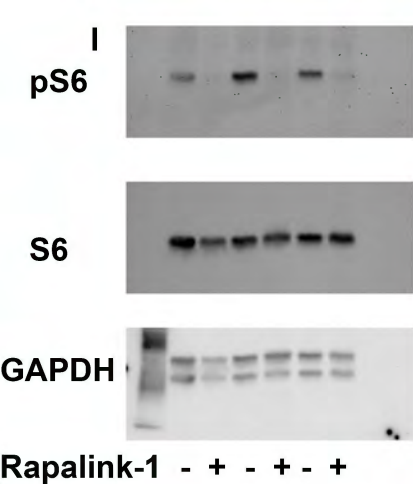
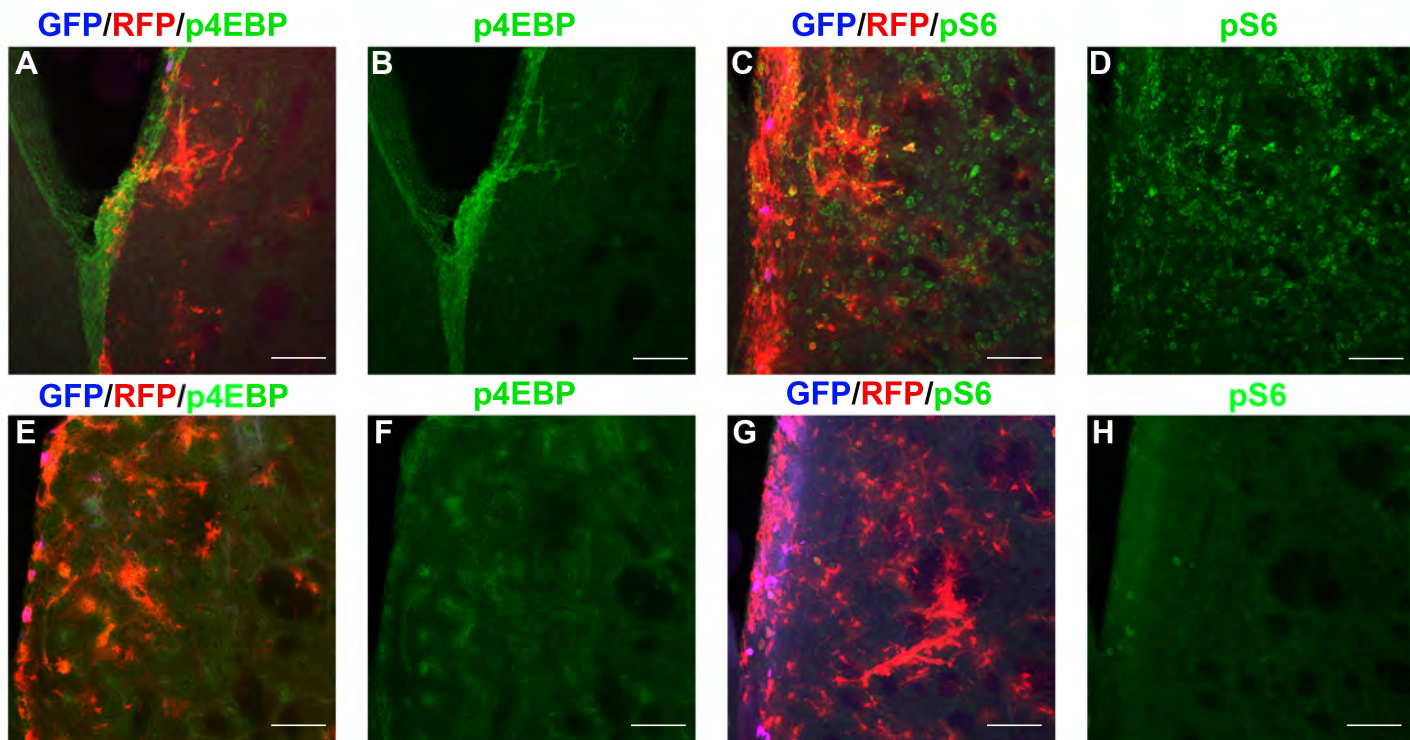
2. Center for Human Genetics, Clemson University, Greenwood, South Carolina, United States of America.

3. Lead Contact

\*Correspondence: David M. Feliciano, Ph.D., Department of Biological Sciences, Clemson University, Clemson, SC 29634-0314, USA. Tel: 864.656.2328 FAX: 864.656.0435; E-mail: [dfelici@clemson.edu](mailto:dfelici@clemson.edu)

Supplemental  
Figure 1







Supplemental Western Blots

pS6

Total S6  
Short

Total S6  
Long

GAPDH

pAKT

pS6

S6



