

Review of Wing Morphology in Fossil and Modern Species of Humpbacked Flies (Diptera: Phoridae)

Mélanie C.M. Herbert^{1*}, André Nel², Brian V. Brown³, Antonio Arillo⁴, Brendon E.
Boudinot⁵, Mónica M. Solórzano-Kraemer¹

¹*Paläontologie und Historische Geologie, Senckenberg Forschungsinstitut und Naturmuseum,
Senckenberganlage 25, D-60325 Frankfurt-am-Main, Germany.*

²*Institut Systématique Evolution Biodiversité (ISYEB), Muséum national d'Histoire naturelle,
CNRS, Sorbonne Université, EPHE, Université des Antilles, Paris, France.*

³*Department of Entomology, Natural History Museum of Los Angeles County, 900 Exposition
Blvd, Los Angeles, CA, 90007, USA.*

⁴*Departamento de Biodiversidad, Ecología y Evolución, Facultad de Biología, Universidad
Complutense, Madrid, Spain.*

⁵*Entomology II, Abteilung Terrestrische Zoologie, Senckenberg Forschungsinstitut und
Naturmuseum, Senckenberganlage 25, D-60325 Frankfurt-am-Main, Germany.*

**Correspondence to be sent to: Paläontologie und Historische Geologie, Senckenberg
Forschungsinstitut und Naturmuseum, Senckenberganlage 25, D-60325 Frankfurt-am-Main,
Germany. E-mail address: melanie.herbert@senckenberg.de*

ADDITIONAL FILE 2 – FIGURES S2

Complementary Figures of Phoridae

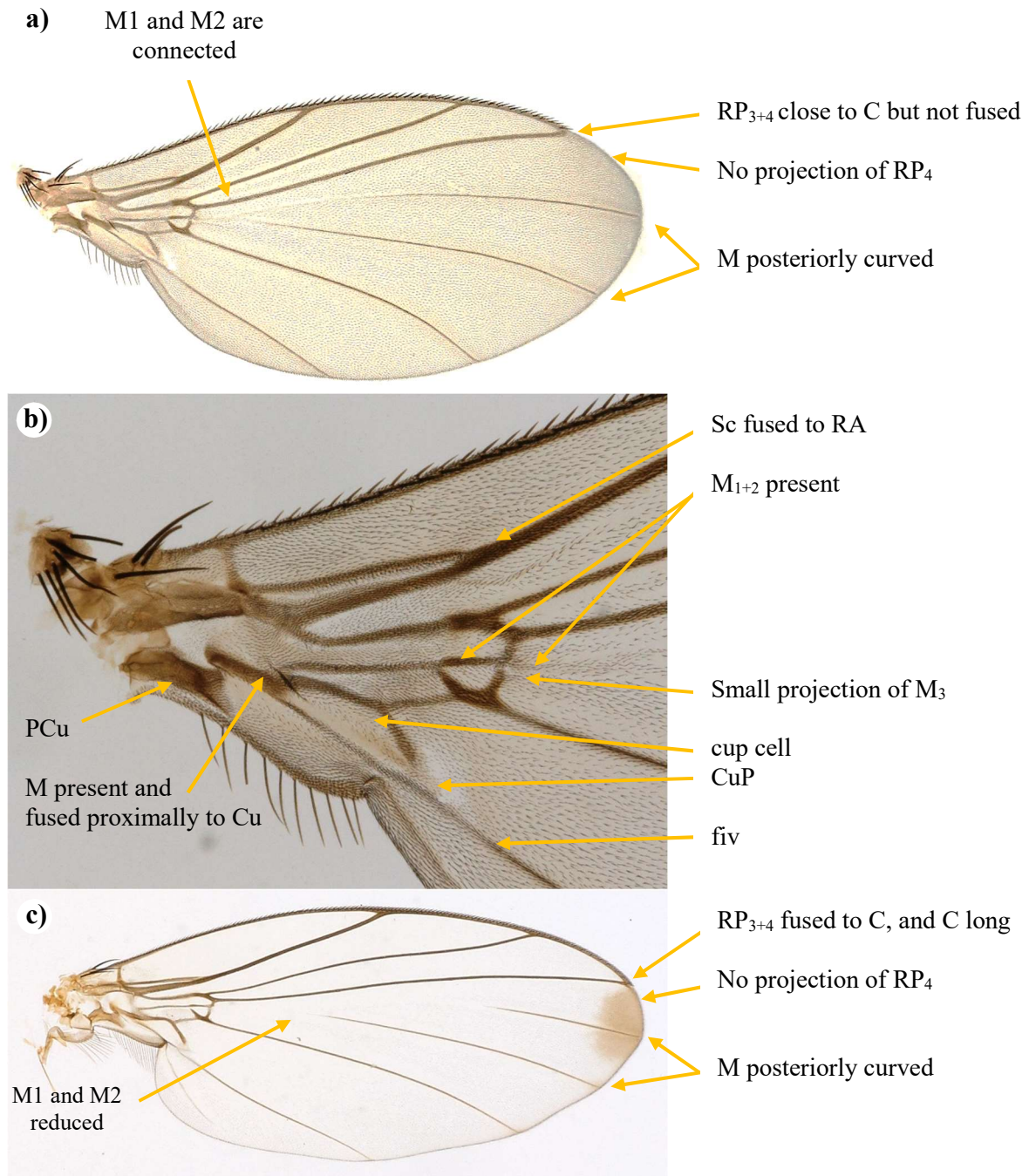


Figure S2.1. **Photographs of wings of living specimens with a early model.** *Archisciada* sp., LACM no number: a, full wing; b, zoom of basal part; c, *Sciadocera* sp., male, LACM no number

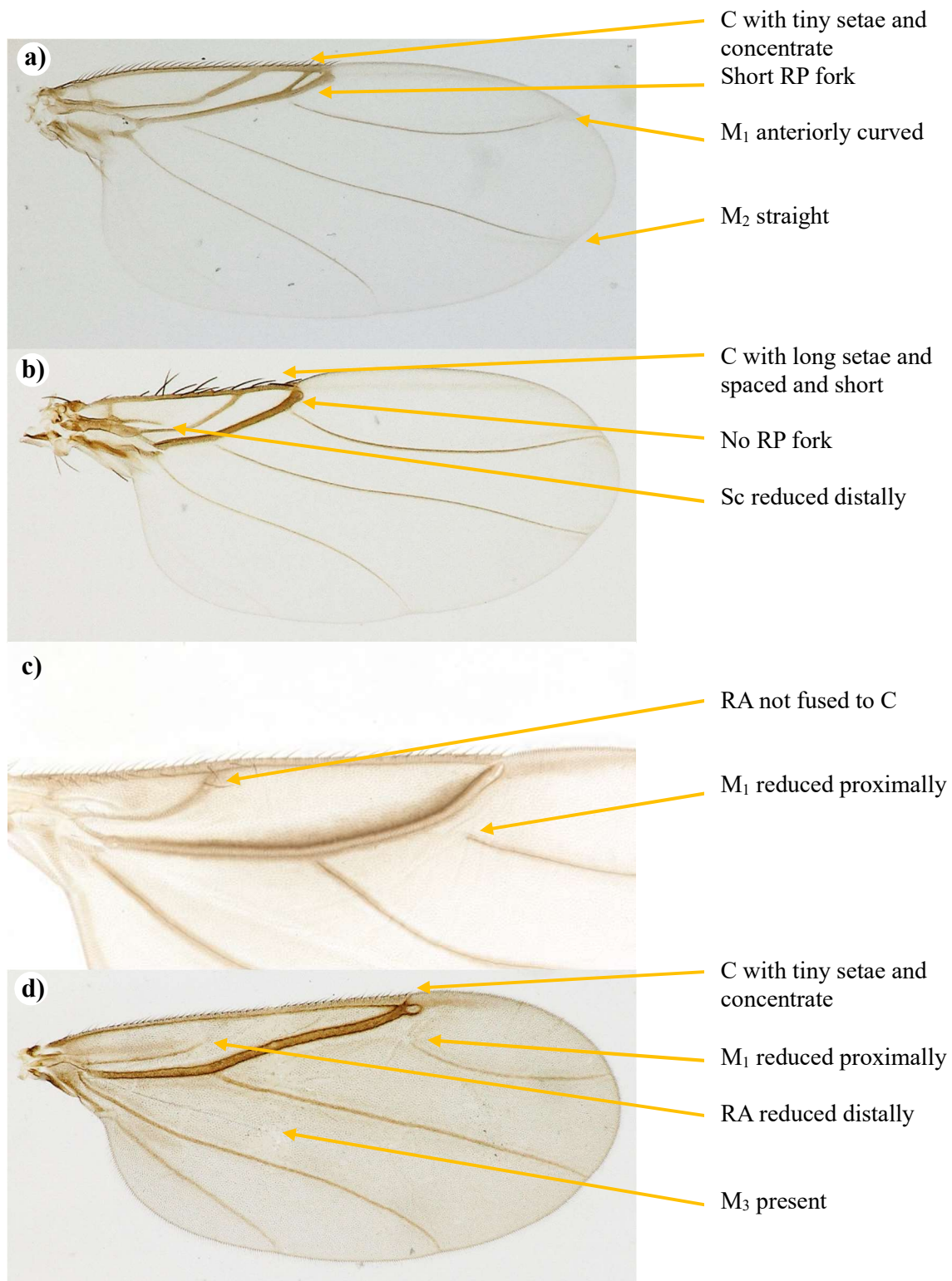


Figure S2.2. **Photographs of wings of Living specimens with a recent model.** a, *Dohrniphora* sp., LACM No number; b, *Conicera* sp., LACM No number; c, *Metopina* sp., LACM No number; d, *Chronocephalus* sp., LACM No number.

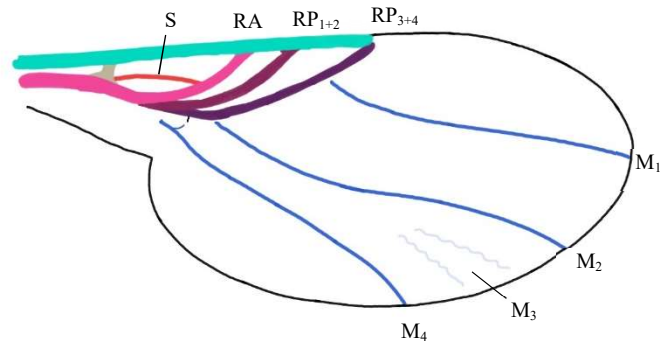


Figure S2.3. †*Agaphora iunior* Mostovski, 1999. Drawing based on figure 7 in Mostovski (1999)

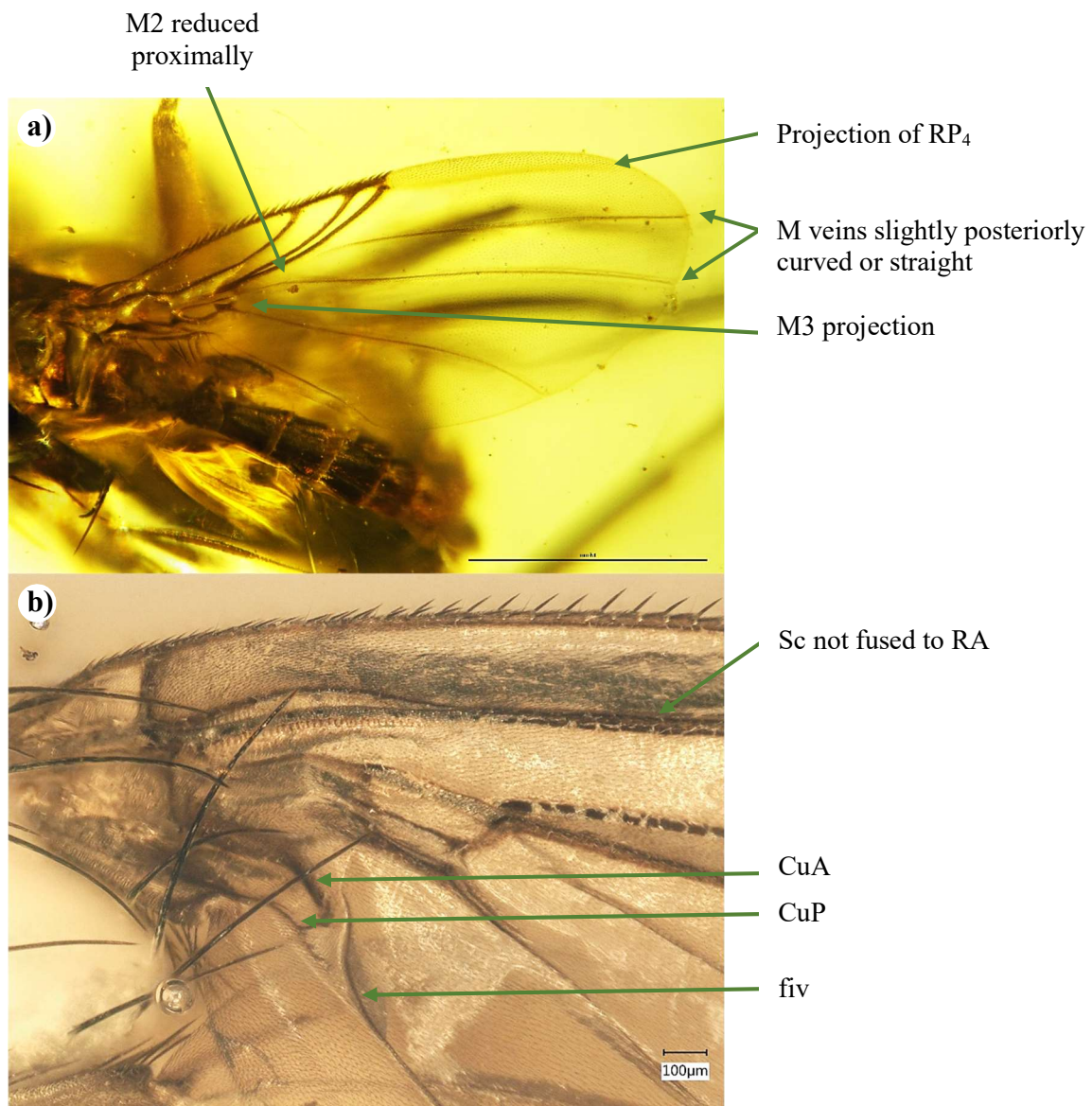


Figure S2.4. **Photographs of wings of fossil specimens with a early model.** a, †*Prioriphora* sp. SMF-Be 2381.2 in Burmese amber; b, potentiel †*Ulrichophora* sp. CCHH 4804-3 (LACM) in Baltic amber.

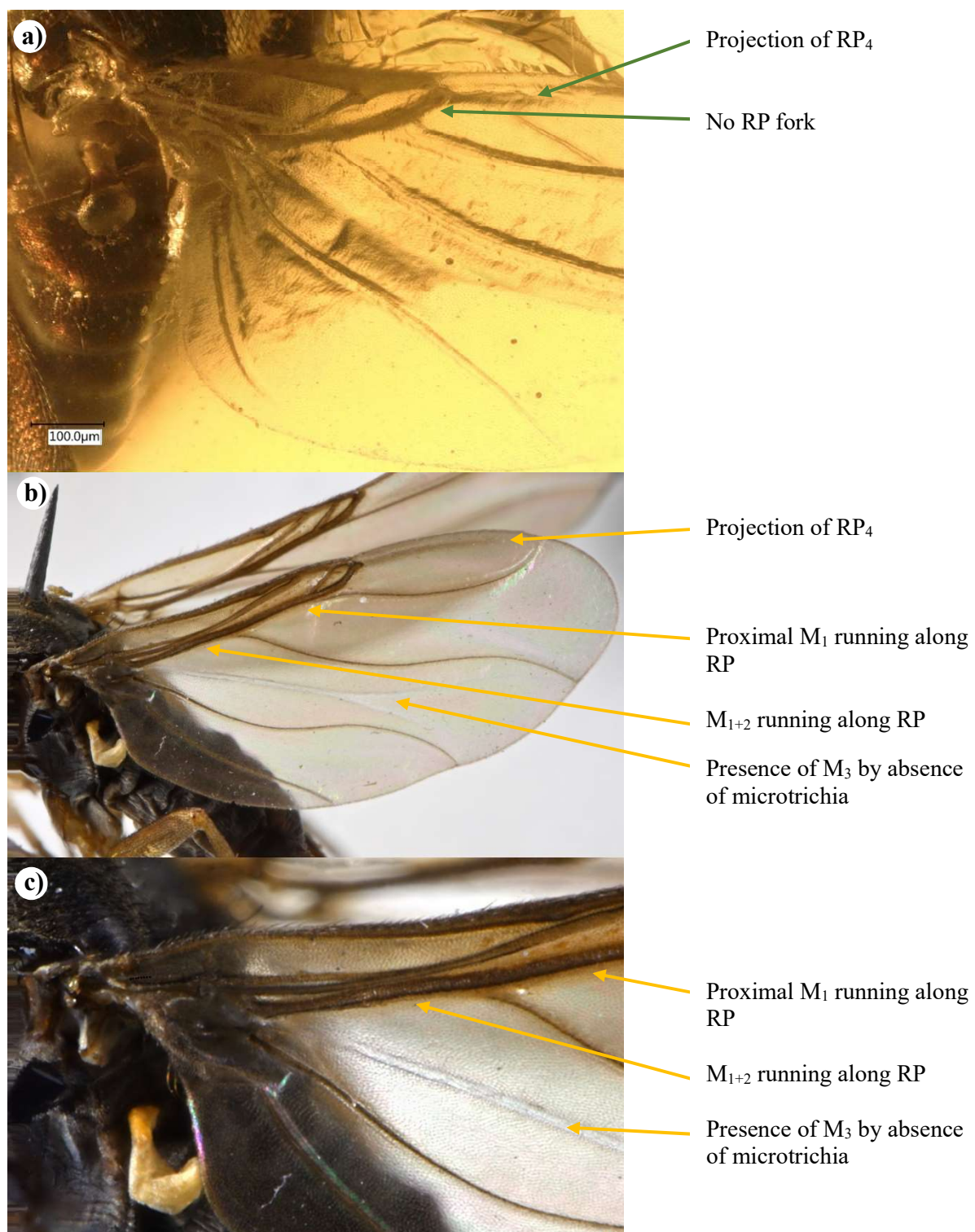


Figure S2.5. **Photographs of wings of fossil and extant specimens with a recent model.** a, *Potentiel †Aenigmatias* sp. CCHH 1804-1 (LACM), in Baltic amber; b and c, *Gymnophora* sp., MNHN no number, living species, full wing and zoom of proximal part, respectfully.

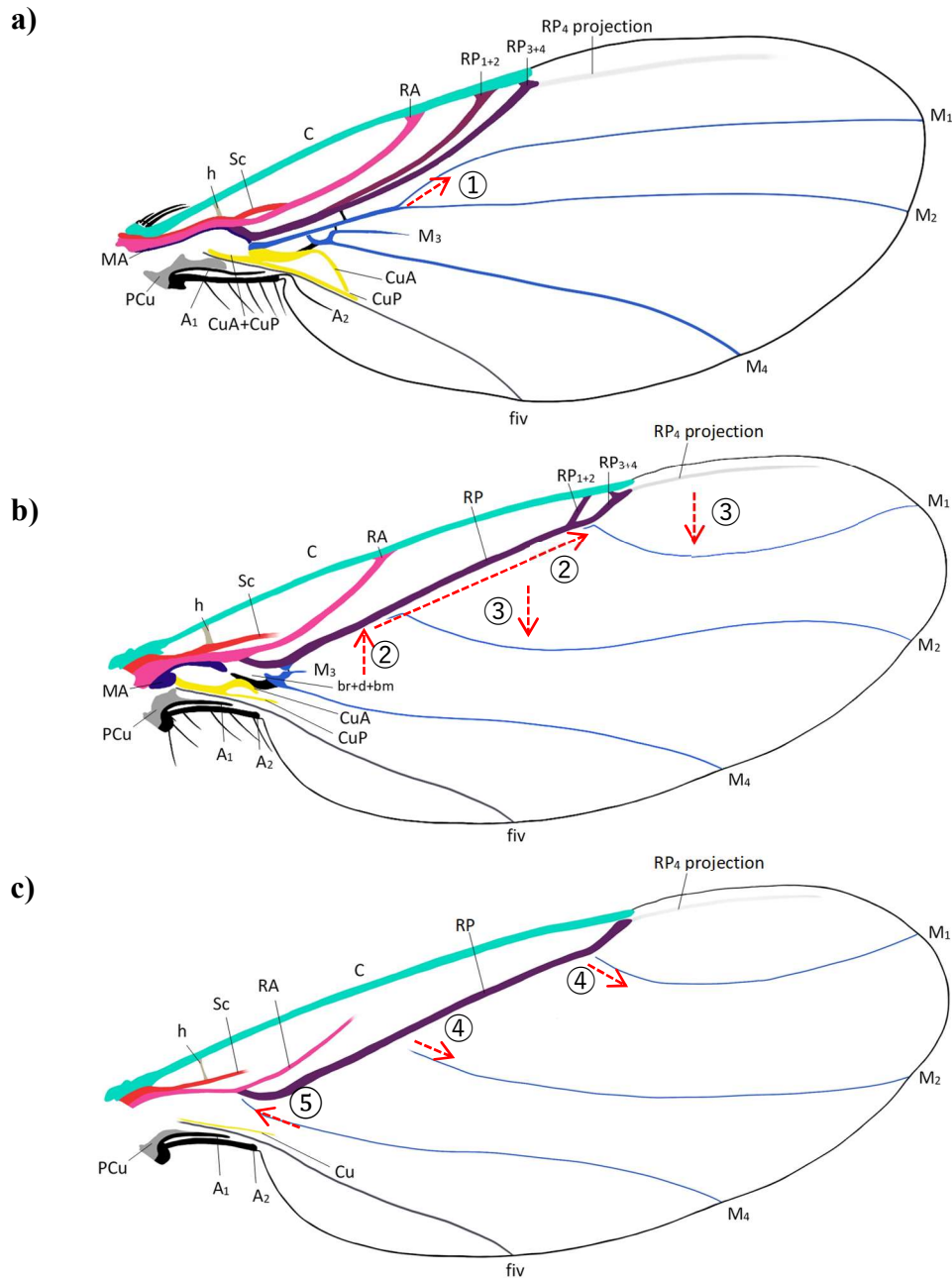


Figure S2.6. **Hypothesis of reduction of Phoridae medial veins.** a, Early wing, M₁ and M₂ are clearly separate from RP, and M₁ is connected to M₂ or reduced proximally ①, and all three proximal cells are present; b, Recent wing, RP fork reduced ②, M₁ and M₂ migrated to the posterior radial system without fused to RP veins ②. Opening of the proximal cells and a change in their orientation from posteriorly curved to sigmoidal ③; c, Wing with an “extreme”

reduction of venation, proximal reduction of M_1 and M_2 ④, M_4 extending proximally ⑤,
disappearance of the

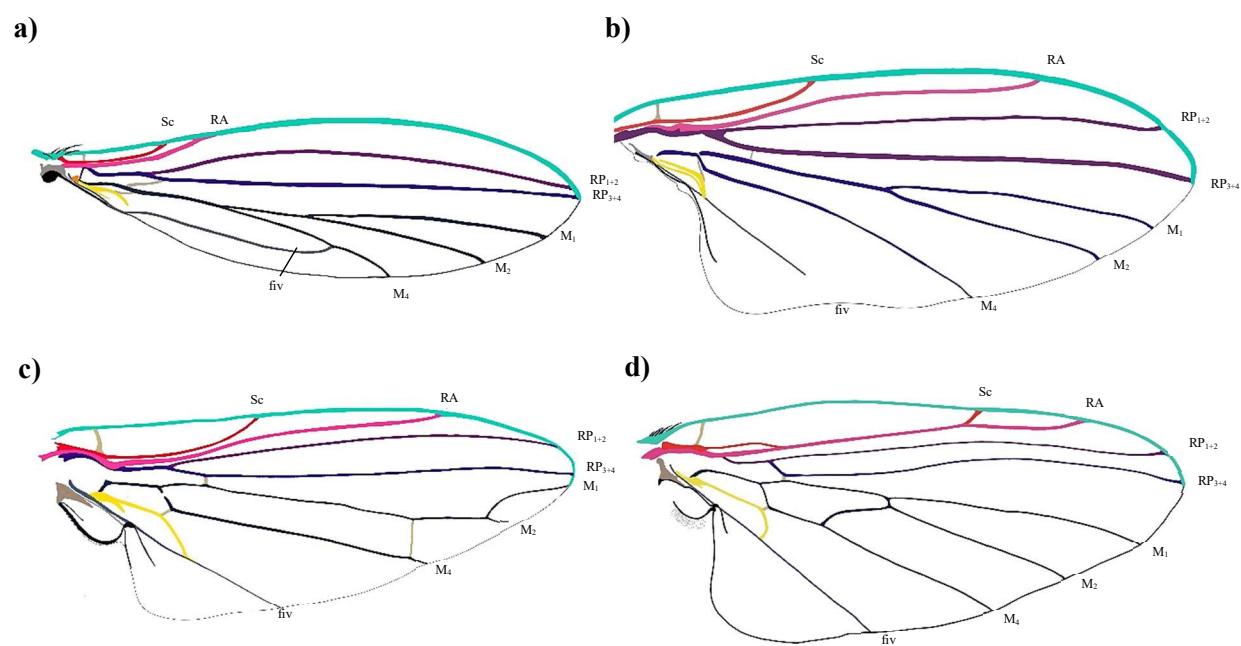


Figure S2.7. **Wing patterns.** a) Lonchopteridae, b) Opetiidae, c) Platypetizidae, d) Ironomyiidae.