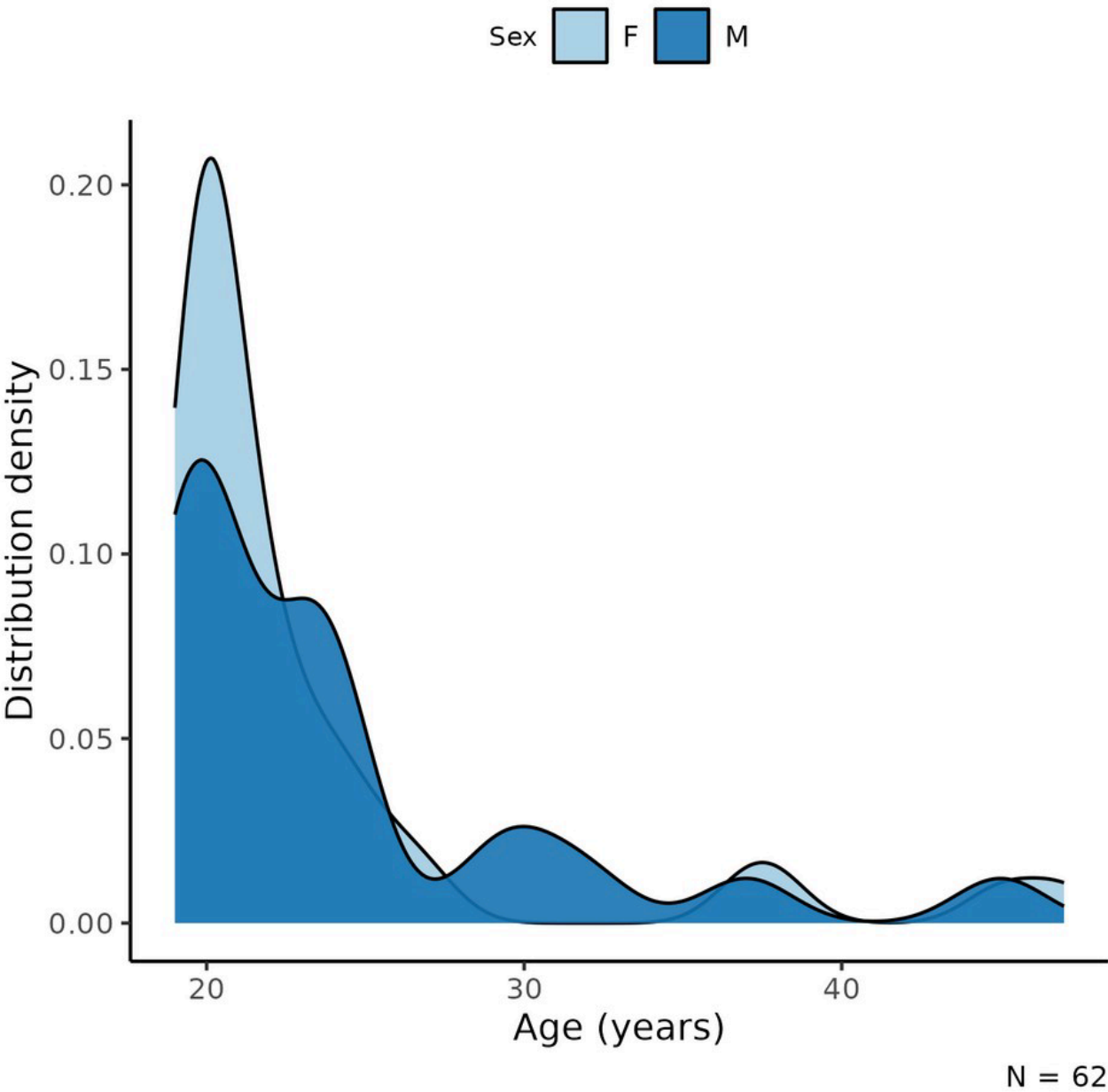
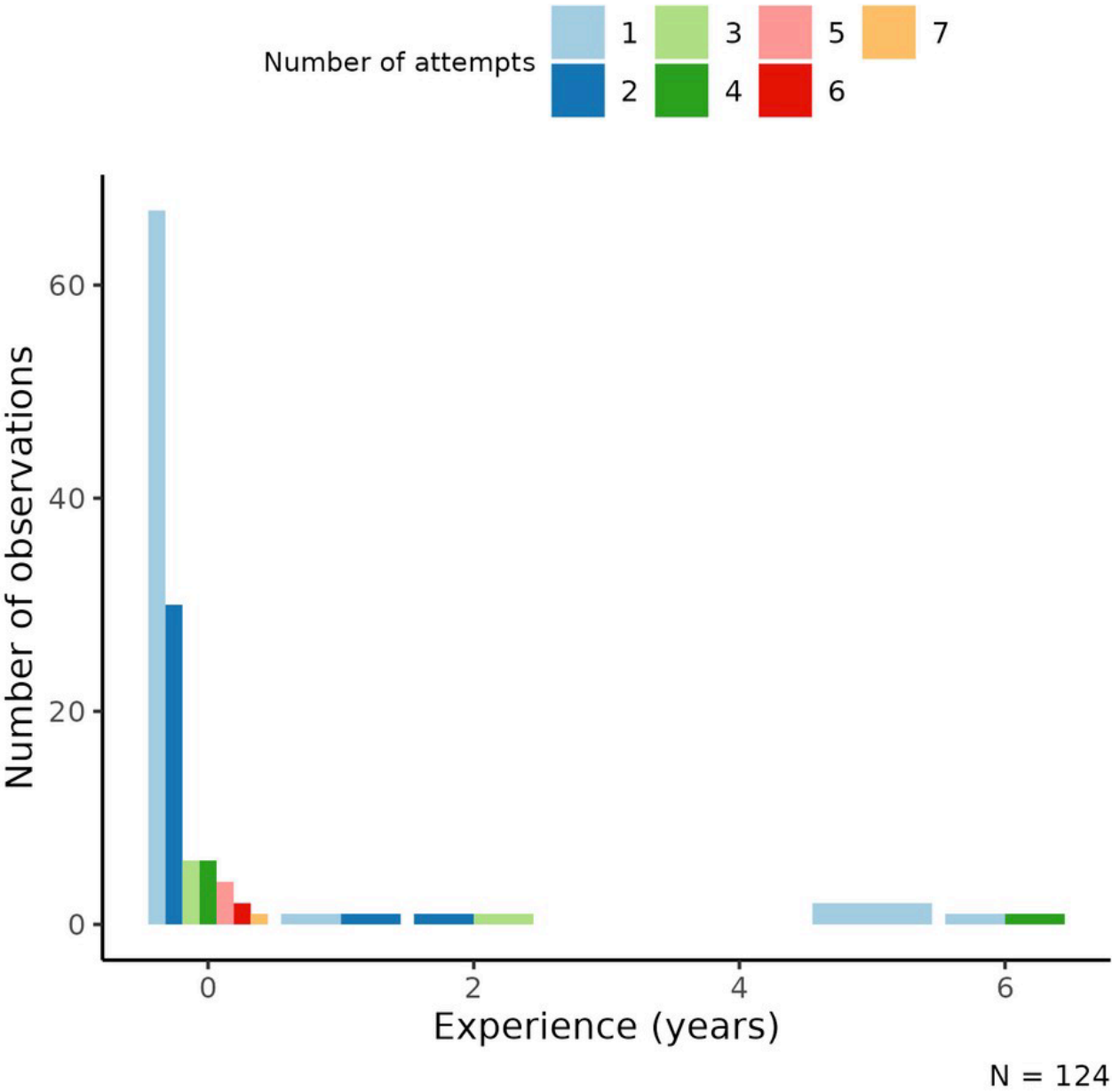


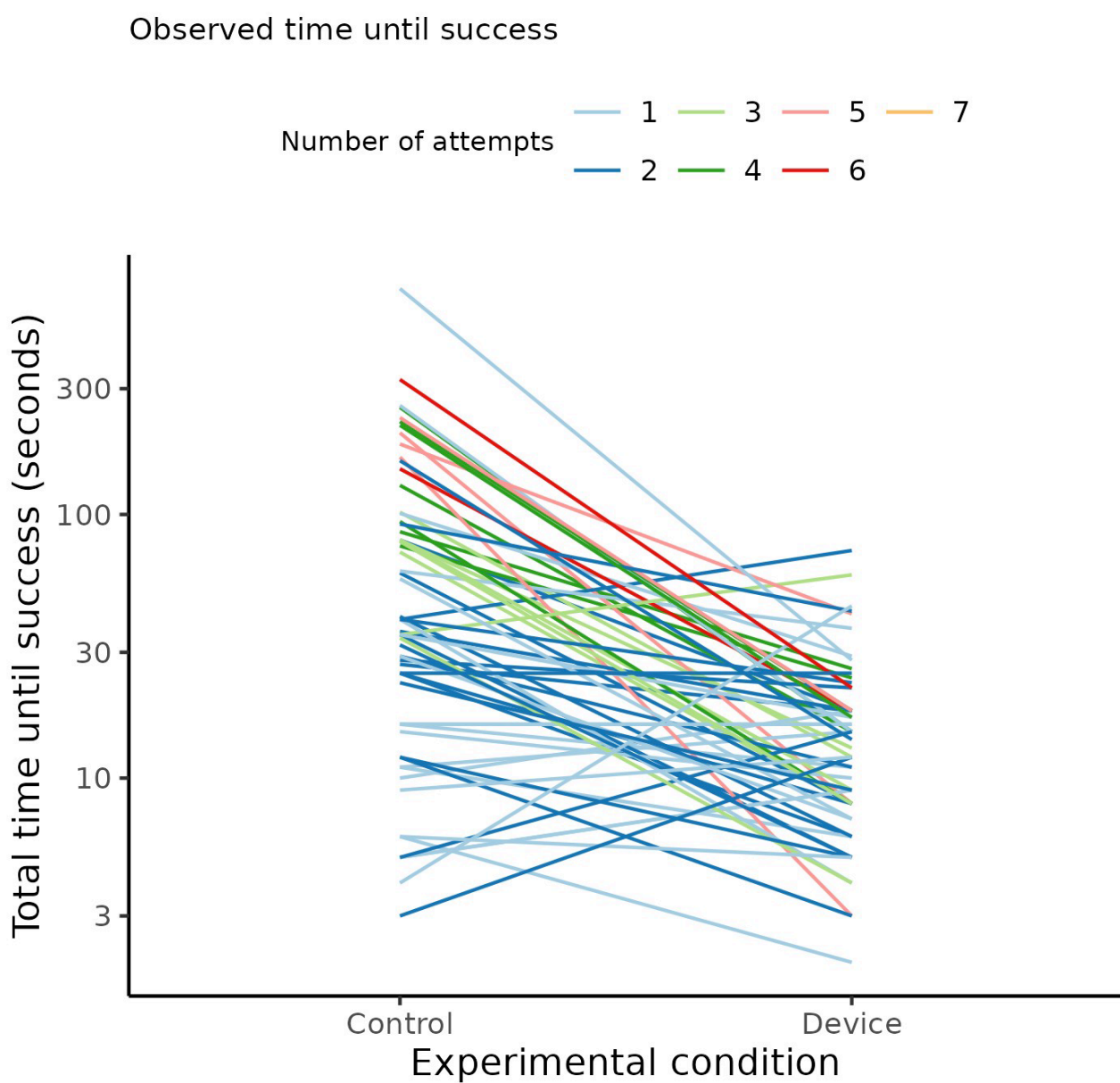
**Figure A1:** Distribution of age in the study population. This figure shows the age distribution of participants enrolled in the study.



**Figure A2:** Number of cannulation attempts by condition and success rates. The figure depicts the number of attempts required to achieve successful cannulation in both control and test conditions.



**Figure A3:** Experience levels among participants. This figure outlines the experience levels of the participants in the study, highlighting the number of participants with prior experience in ultrasound-guided cannulation.



N = 124

**Figure A4:** Interaction effects in cannulation attempts. The figure illustrates non-parallel regression lines, highlighting the lack of interaction between experience and the number of attempts.

