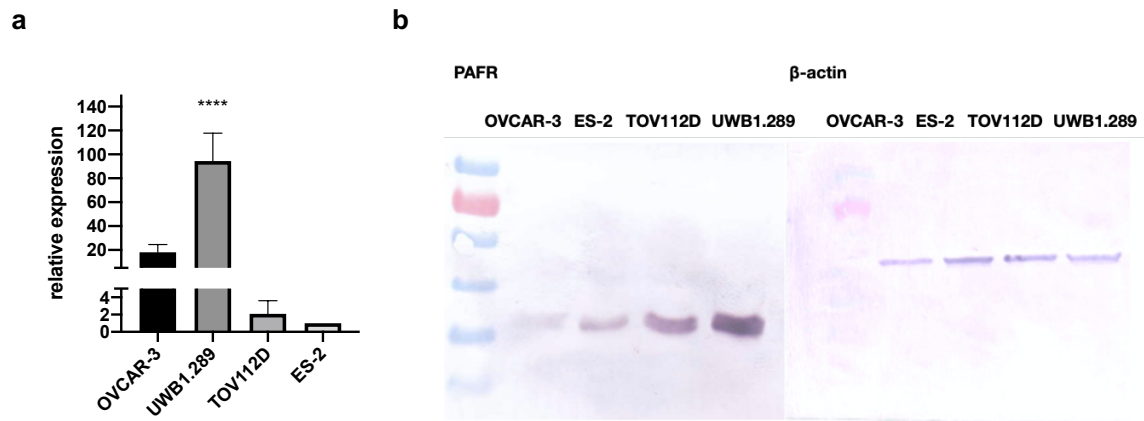


Supplementary figure 1: Expression of PAFR in different ovarian cancer cell lines.



Supplementary figure 1: Expression of PAFR in different ovarian cancer cell lines. **(a)** PCR analysis of the four histological subtypes revealed an over-expression of the PAFR in serous cell lines (UWB1.289 and OVCAR-3). Results are represented as mean (SD) of 3 independent experiments. The difference was calculated relative to the ES-2 cell line with the ordinary one-way ANOVA test; ** $p < 0.01$, *** $p < 0.001$ and **** $p < 0.0001$ compared with controls. **(b)** Especially the BRCA1 mutated cell lines showed an elevated protein expression

Supplementary table 1: Sequences of primers used in qPCR to determine mRNA expression levels.

PAFR	Forward: GGGGACCCCATCTGCCTCA
	Reverse: GCGGGCAAAGACCCACAGCA
β-actin	Forward: TCCTCCCTGGAGAAGAGCTA
	Reverse: CGTGGATGCCACAGGACT
GAPDH	Forward: AGCCACATCGCTCAGACAC
	Reverse: GCCCAATACGACCAAATCC