

Supplementary Materials

Eyes on hold: Motion task difficulty jointly delays microsaccade and pupil responses

Rania Ezzo, Bogeng Song, Bas Rokers, Marisa Carrasco

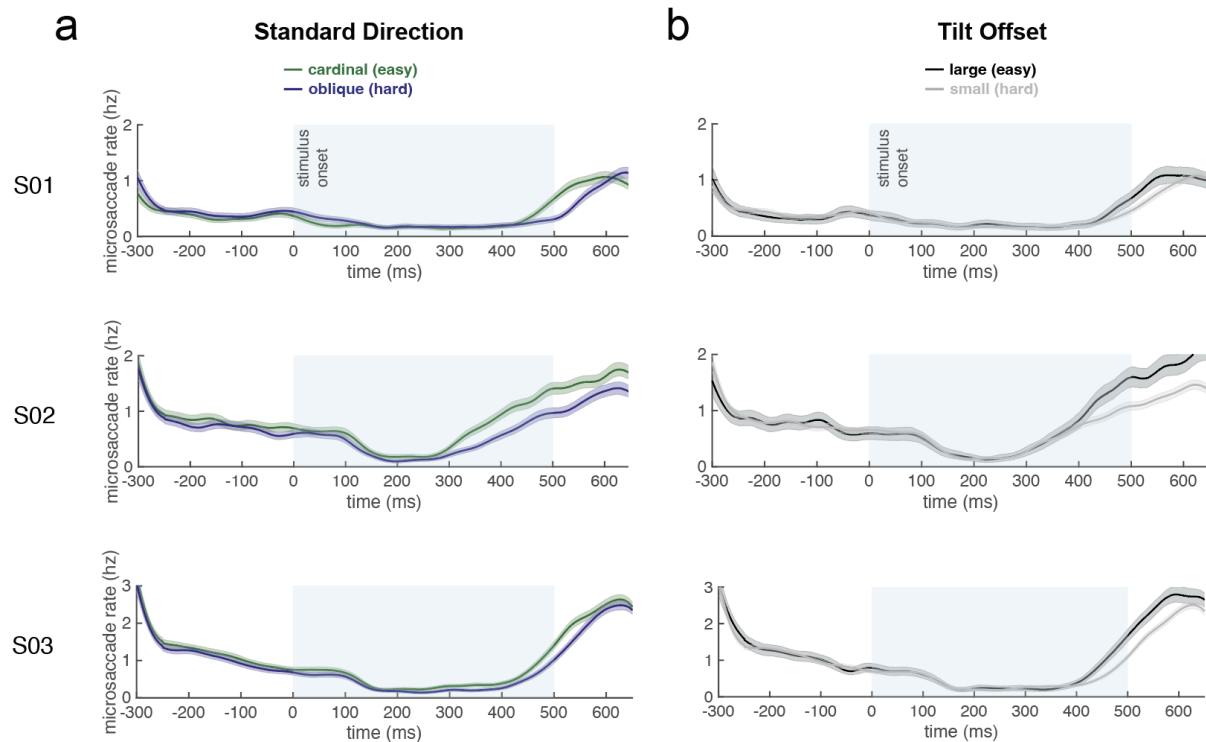


Figure S1. Microsaccade rates for three observers. Rates decrease relative to the stimulus period (inhibition), followed by an enhancement (rebound) which differs in time across observers. Rebounds occur earlier for easy than hard trials shown for **(a)** cardinal (easy) versus oblique (hard) standard directions, and **(b)** large (easy) versus small (hard) tilt offsets. Stimulus period is represented in the shaded region. Error bars represent 95% confidence intervals derived from 1,000 bootstraps.