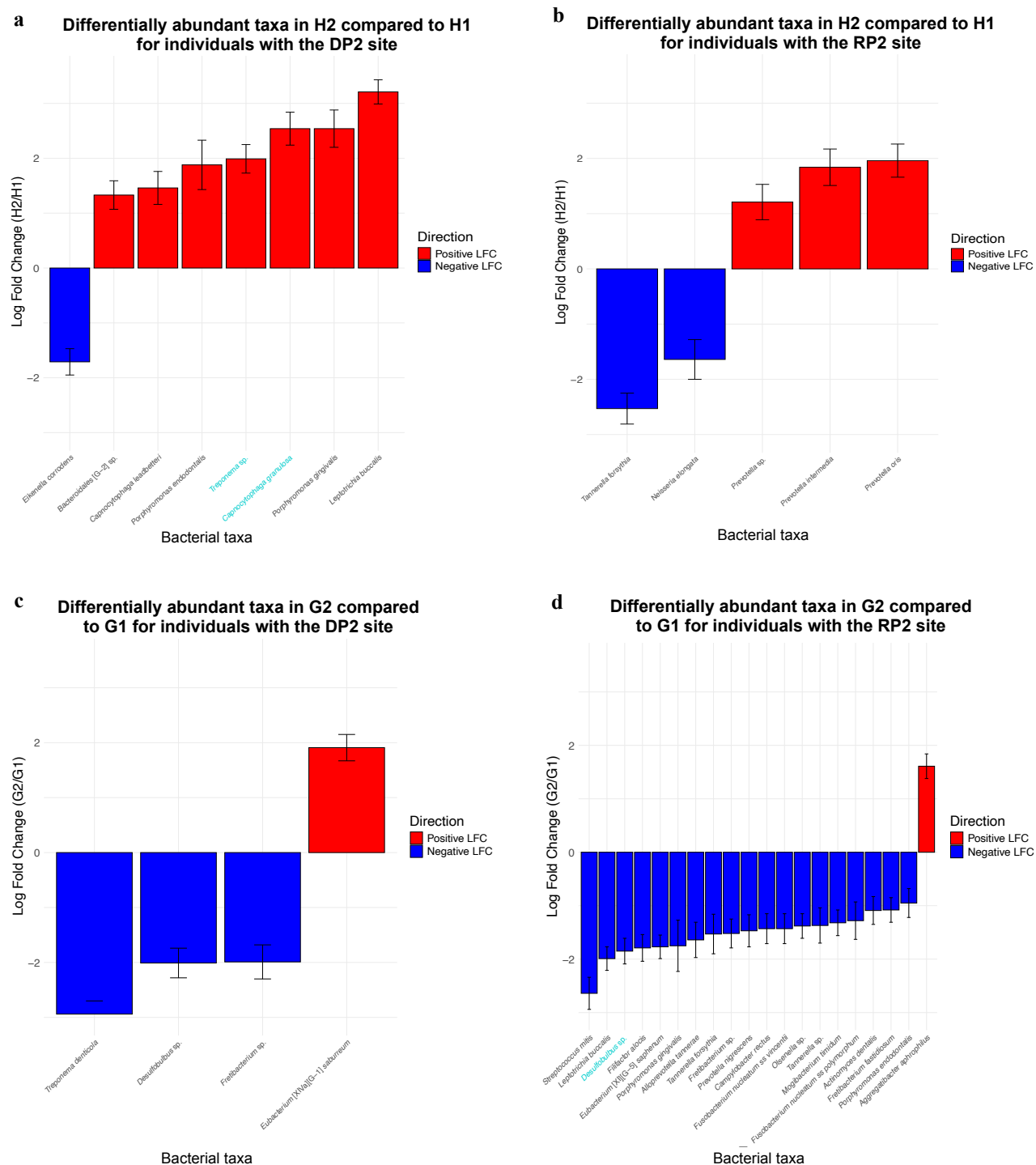


**Fig. S4**



**Supplementary Fig. S4 Differentially abundant taxa (DAT).** DAT of the H group in individuals with DP2 (a) and RP2 (b) within the same oral cavity. Similarly, DAT of the G group in individuals with these respective sites (c, d). Group names are as indicated in Fig 1. Bacterial taxa that increased are shown with red bars, while those that decreased are shown with blue bars in comparisons within each figure. The height of the bars represents the log fold change (LFC), and the whiskers indicate  $\pm 1$  standard error. DAT that passed sensitivity analysis are indicated in light blue.