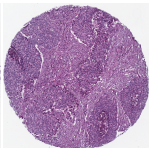
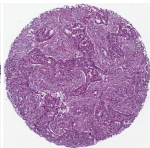
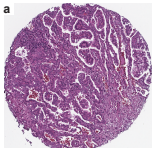


Patient1

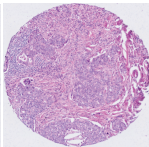
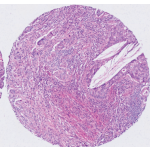
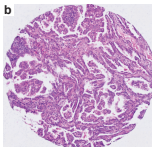
Patient 2

Patient 3

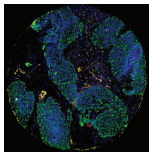
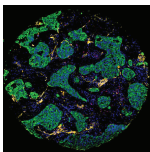
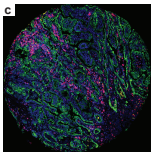
a



b



c



Supplementary Figure 3: Strategy of pathologists' evaluation on ICON2.

Microphotographs showing H&E (a), reference H&E, (b) Xenium-MM H&E staining slides, (c) multiplex immunofluorescence stained with CK (green), CD3 (red) and CD68 (yellow) performed in a serial sections. We evaluated the pattern of expression of endothelial cells, fibroblasts, macrophages, plasma cells, T cells and epithelial cells, and compared them with the patterns of the phenotypes obtained for each platform in ICON2.