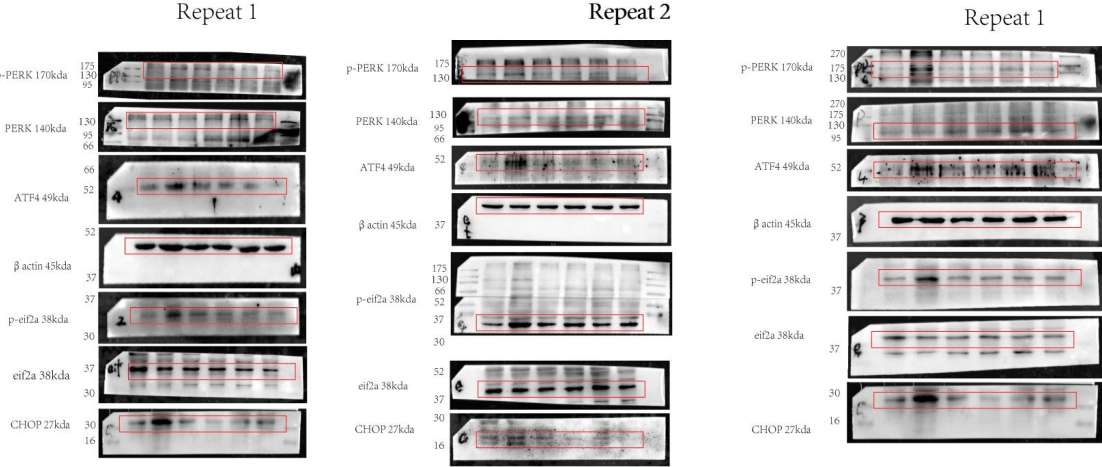


Dear Editors and Reviewers.

Since some of the WBs of the animal experiments were washed with TBST, the markers of some of the bands could not be clearly visible; due to the conflicting molecular weights of ATF4/CHOP/p-eif2a/eif2a and the conflicting molecular weights of p-PERK/PERK, our lab used the same proteins on two gels in the simultaneous experiments. For the cell experiment part, we used three different cell experiments to carry out, due to the pre-exploration, we carried out the WB assay on two separately extracted cell proteins at the same time, if additional WB experiments are needed, we will add them in time, thank you for your understanding.

mPFC of SD rats



BV2 cell/microglia

