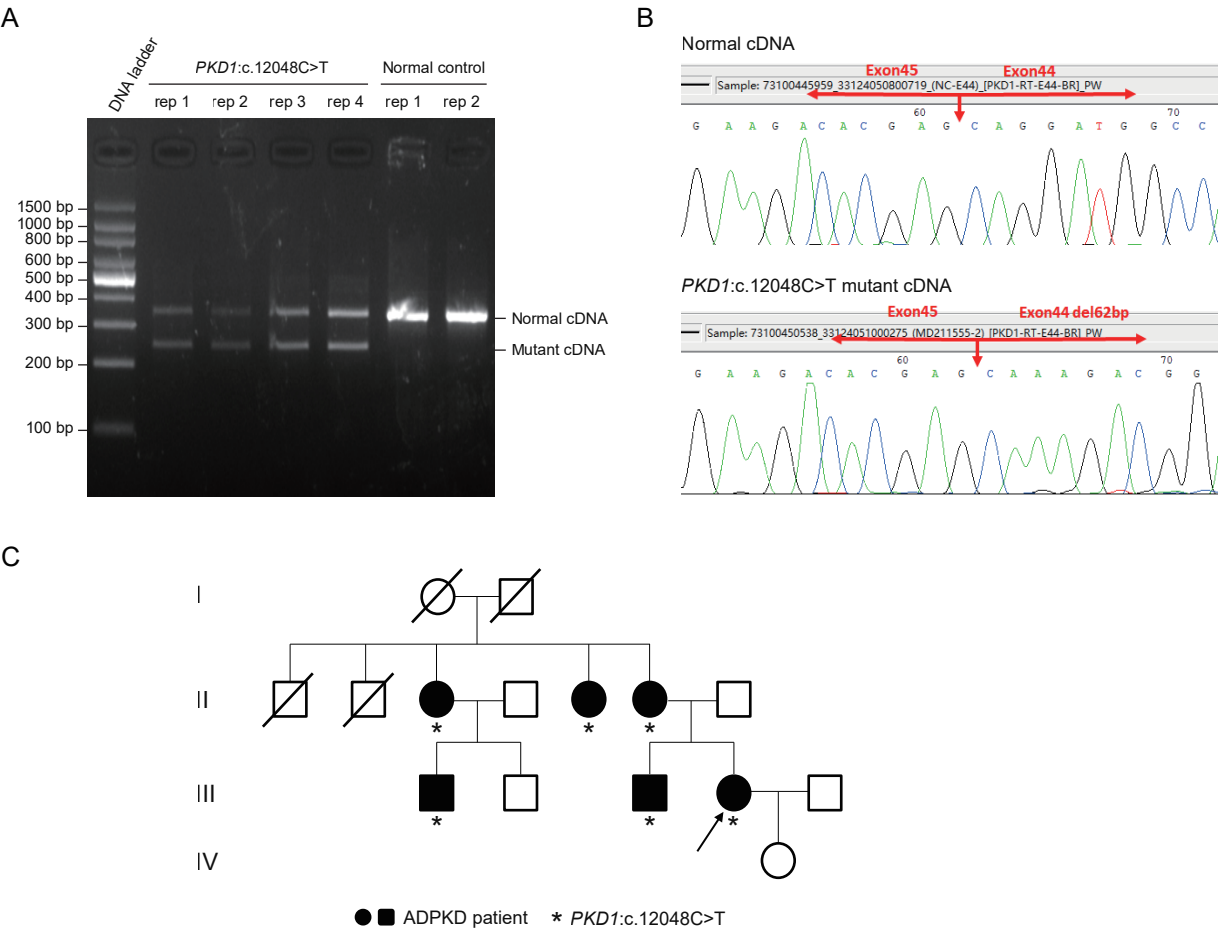


Supplemental Figure 3



Supplemental Figure 3. Validation of the pathogenicity of the synonymous variant *PKD1*:c.12048C>T in KPK035. (A) Amplification of cDNA showing that mRNA splicing was affected by *PKD1*:c.12048C>T. (B) Sanger sequencing of the mutant cDNA showed deletion of 62 bp in exon 44, which was correlated to p.G4016Afs*110. (C) The pedigree, phenotypes and genotypes of the family of KPK035.