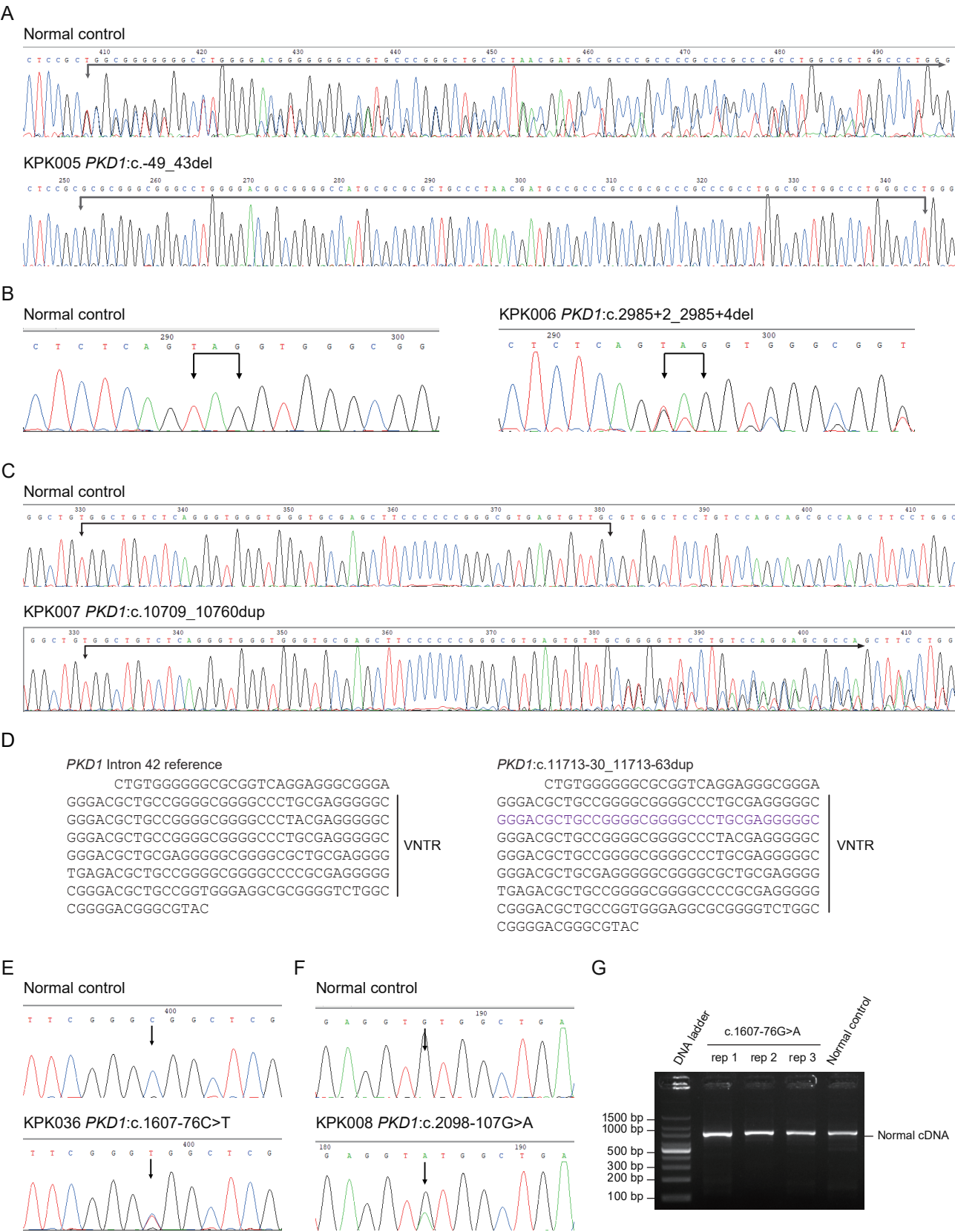


Supplemental Figure 2



Supplemental Figure 2. Confirmation of variants identified by targeted LRS. (A-C) Confirmation of *PKD1*:c.-49_+43del in KPK005 (A), *PKD1*:c.2985+2_2985+4del in KPK006 (B), and *PKD1*:c.10709_10760dup in KPK007 (C) by Sanger sequencing. (D) Display of *PKD1*:c.11713-30_11713-63dup in an array of variable number of tandem repeats (VNTR) in intron 42. (E-F) Confirmation of *PKD1*:c.1607-76C>T in KPK036 (E), and *PKD1*:c.2098-107G>A in KPK008 (F). (G) Amplification of cDNA showing that mRNA splicing was not affected by *PKD1*:c.1607-76C>T in KPK036.