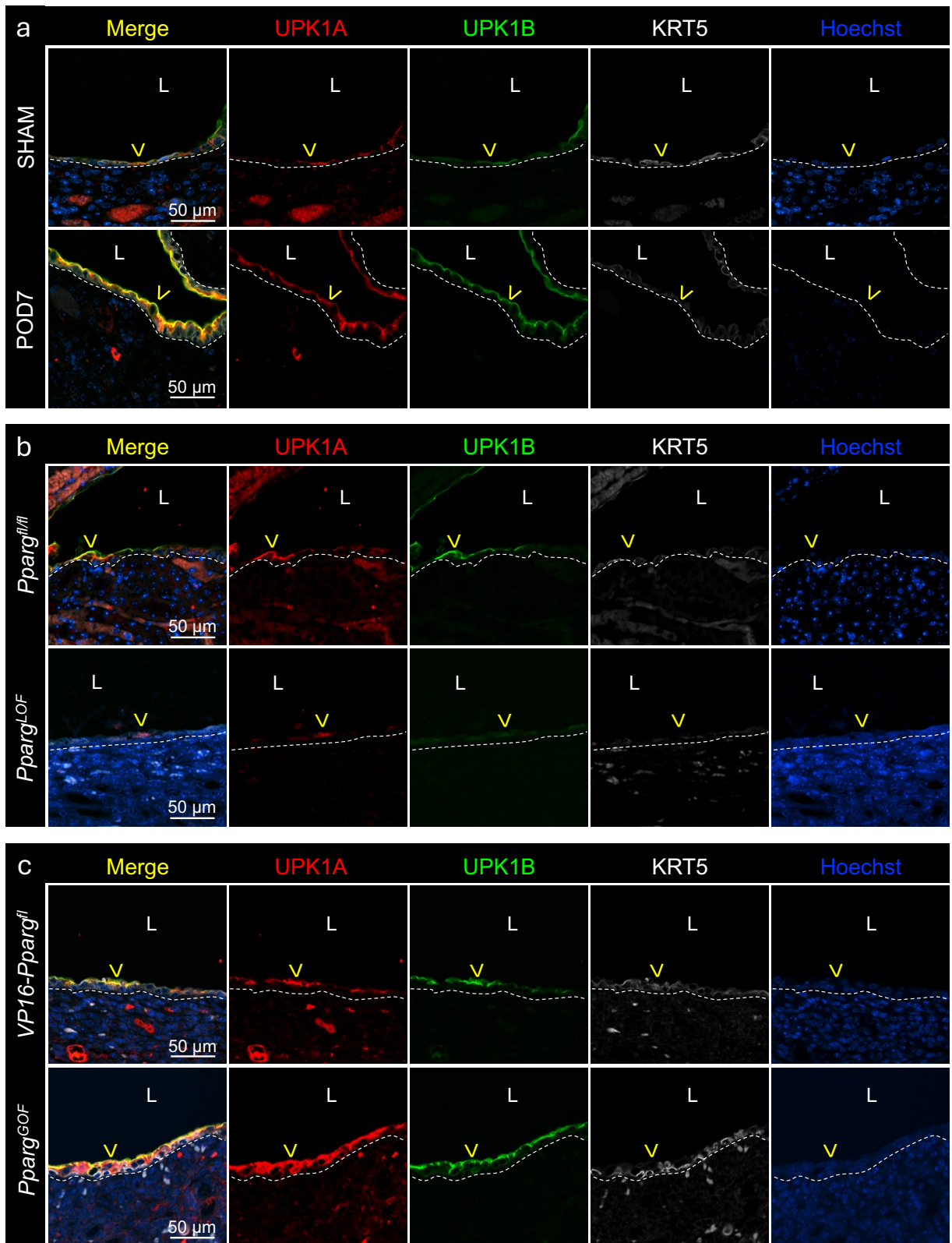
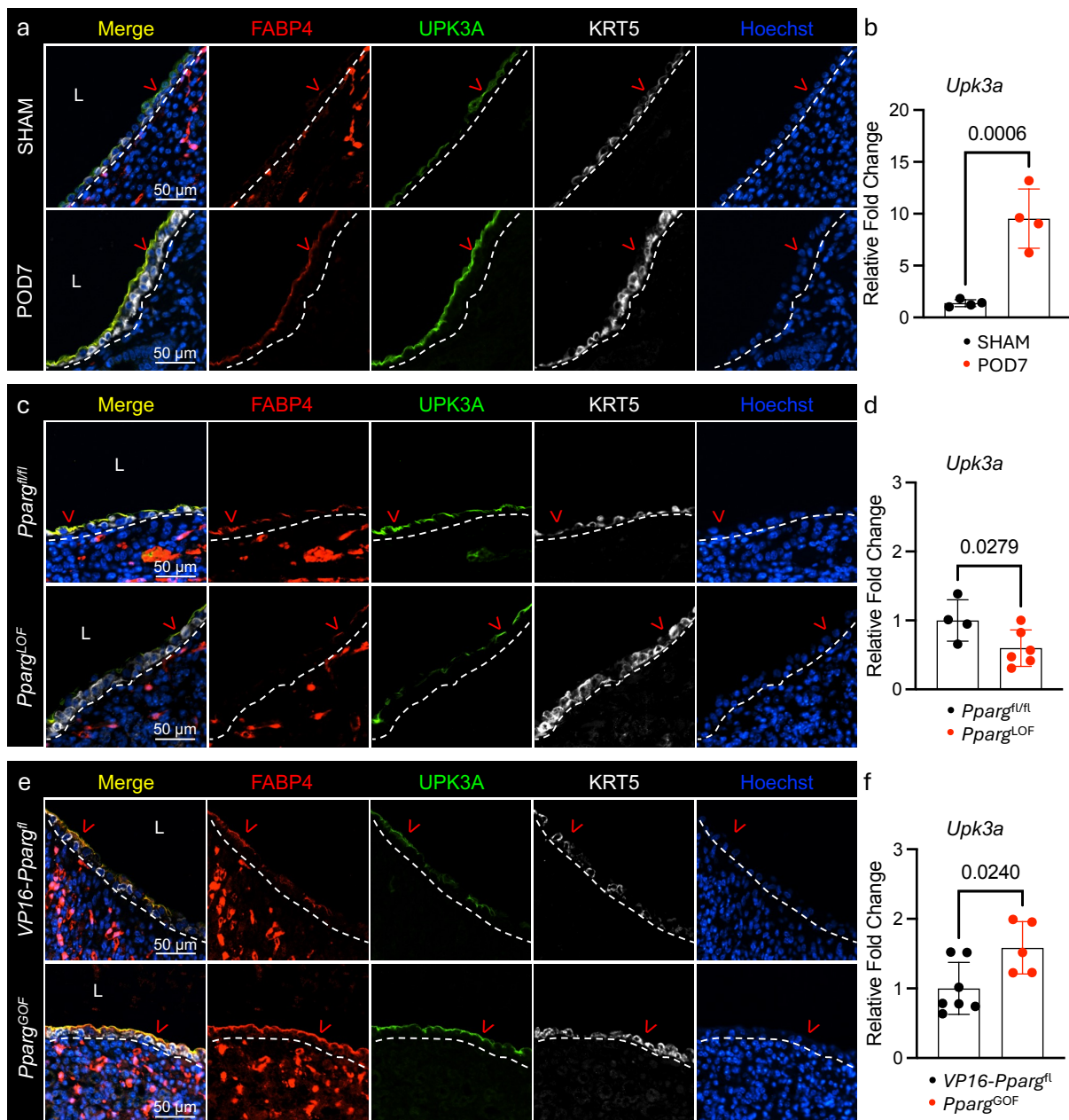


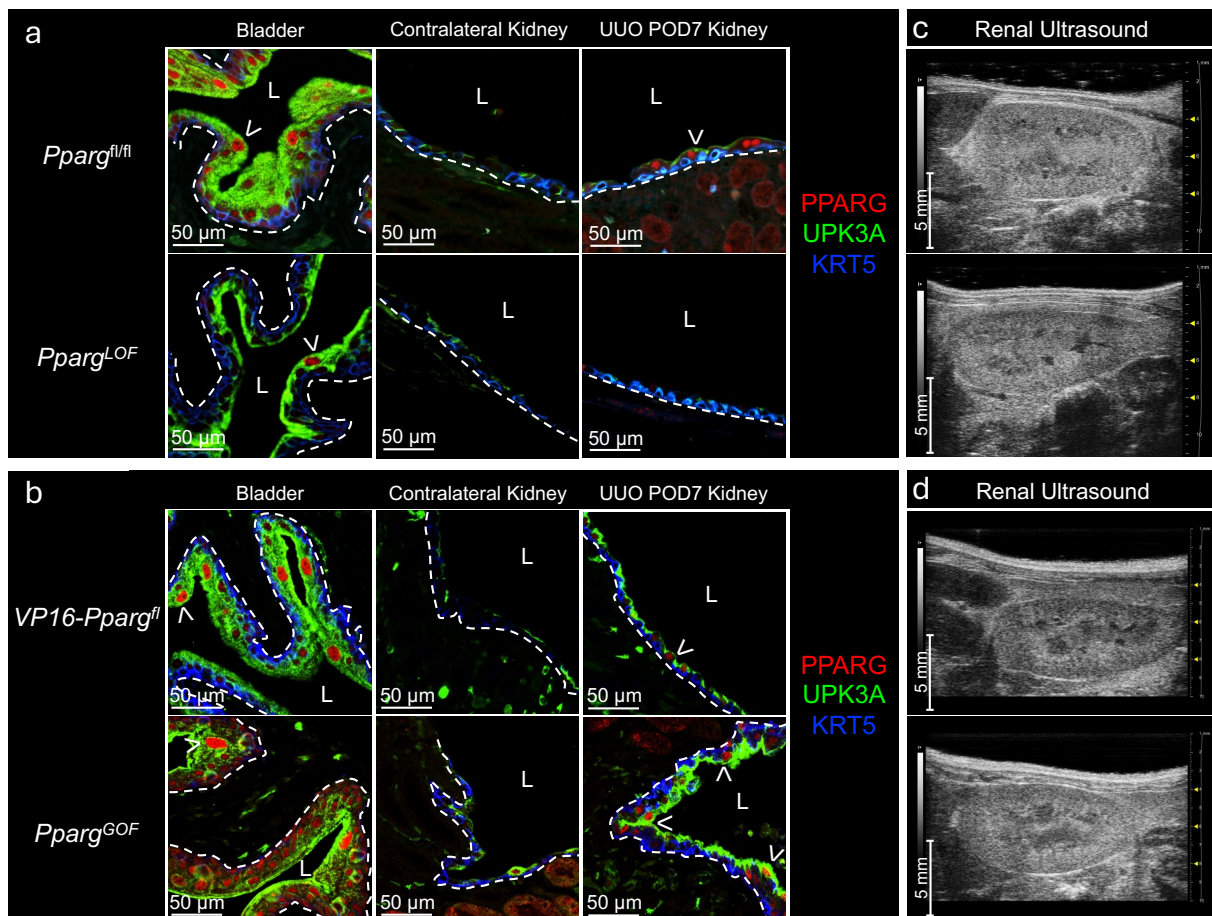
Supplementary Figure 1. scRNA-seq demonstrates increased proportion of urothelial cells and increased urothelial gene expression during UUO.



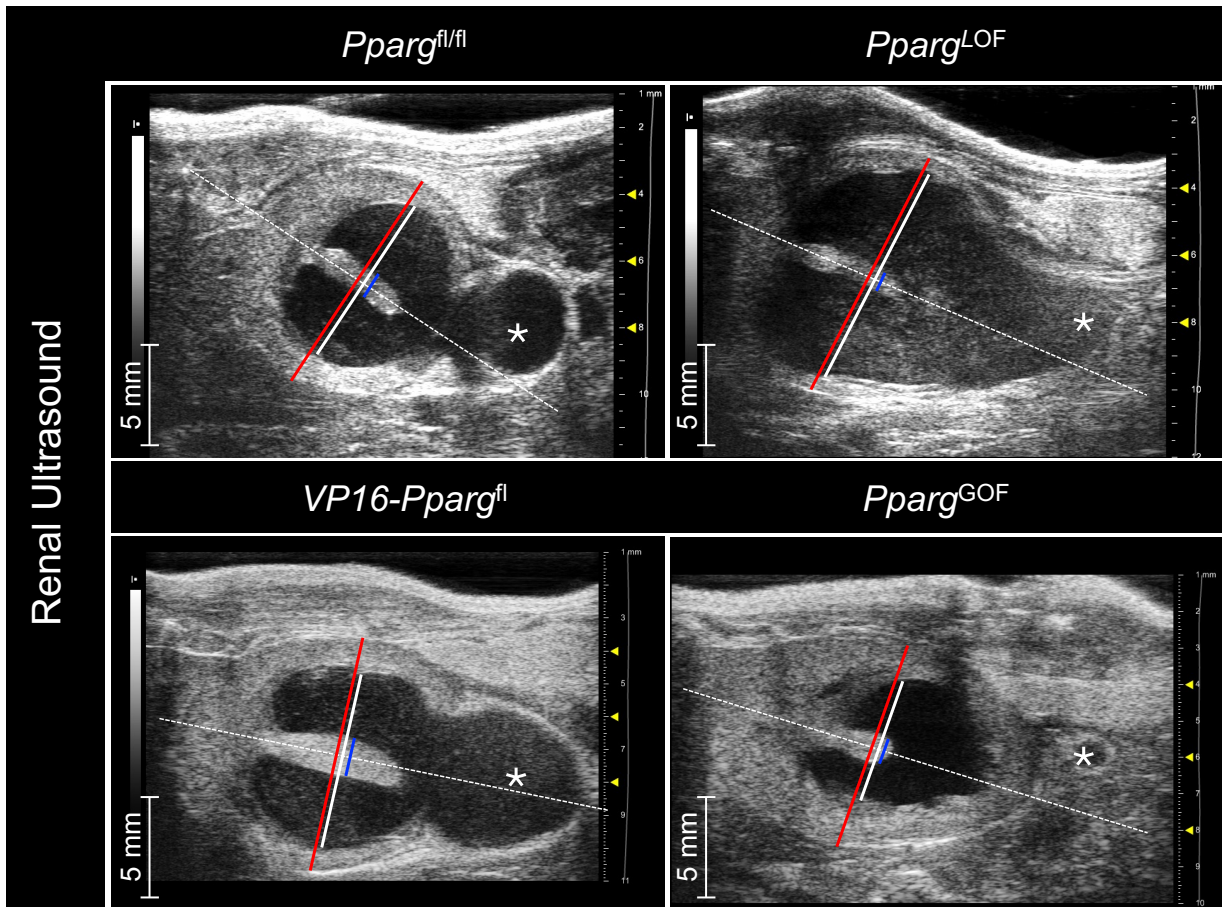
Supplementary Figure 2. UO leads to increased UPK1A and UPK1B which are altered during conditional manipulation of PPAR γ .



Supplementary Figure 3. UO leads to increased UPK3A and FABP4 which are altered during conditional manipulation of PPAR γ .



Supplementary Figure 4. Conditional manipulation of PPAR γ alters both PPARG and UPK3A expression.



Supplementary Figure 5. Annotation of sonograms for renal parenchyma measurements.