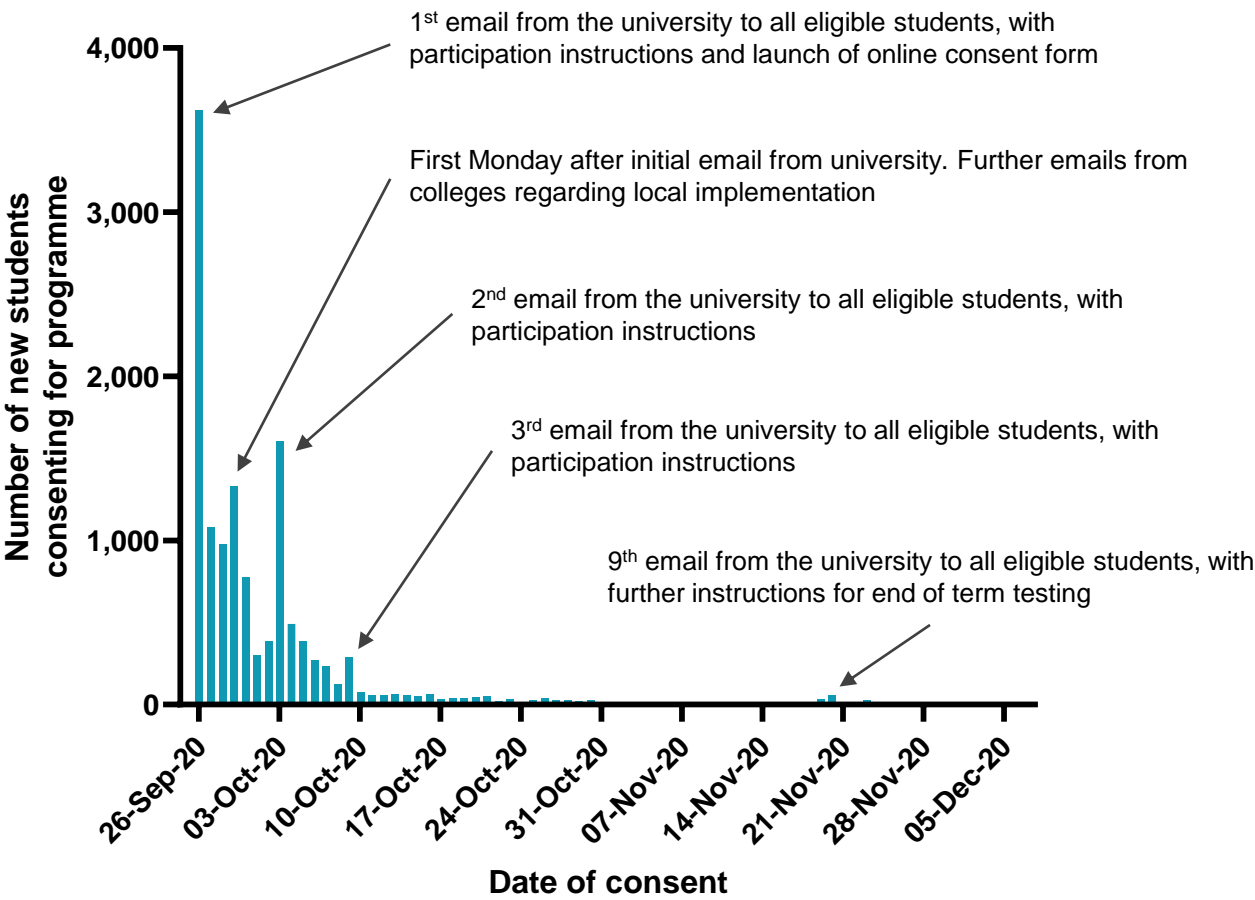
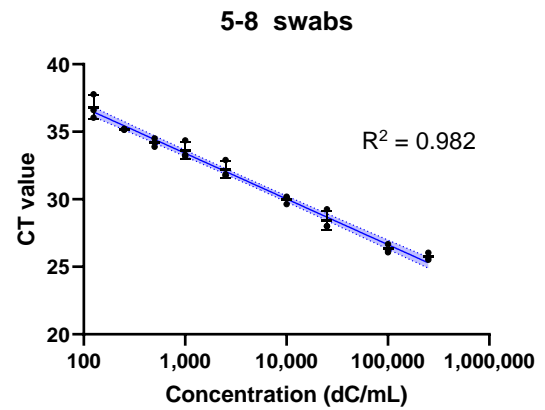
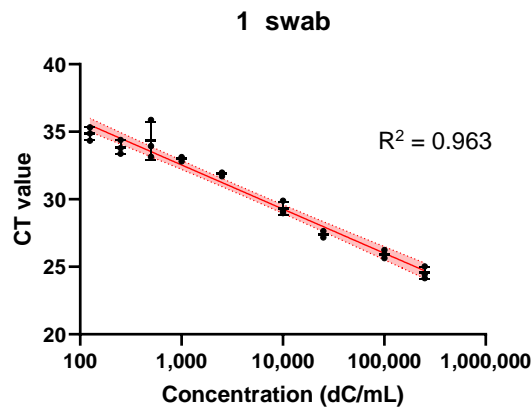


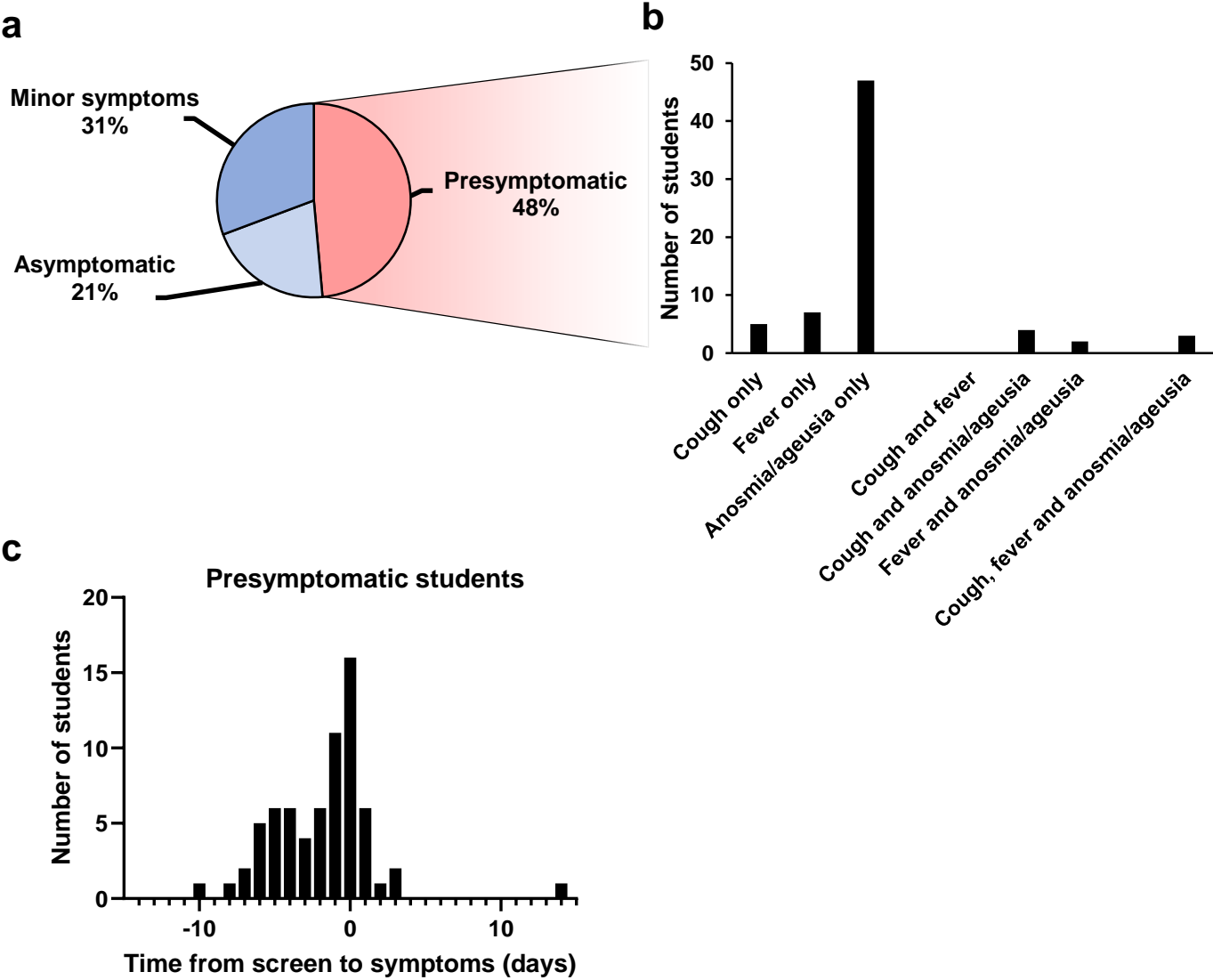
Extended Data Fig. 1: Impact of communications on study participation.



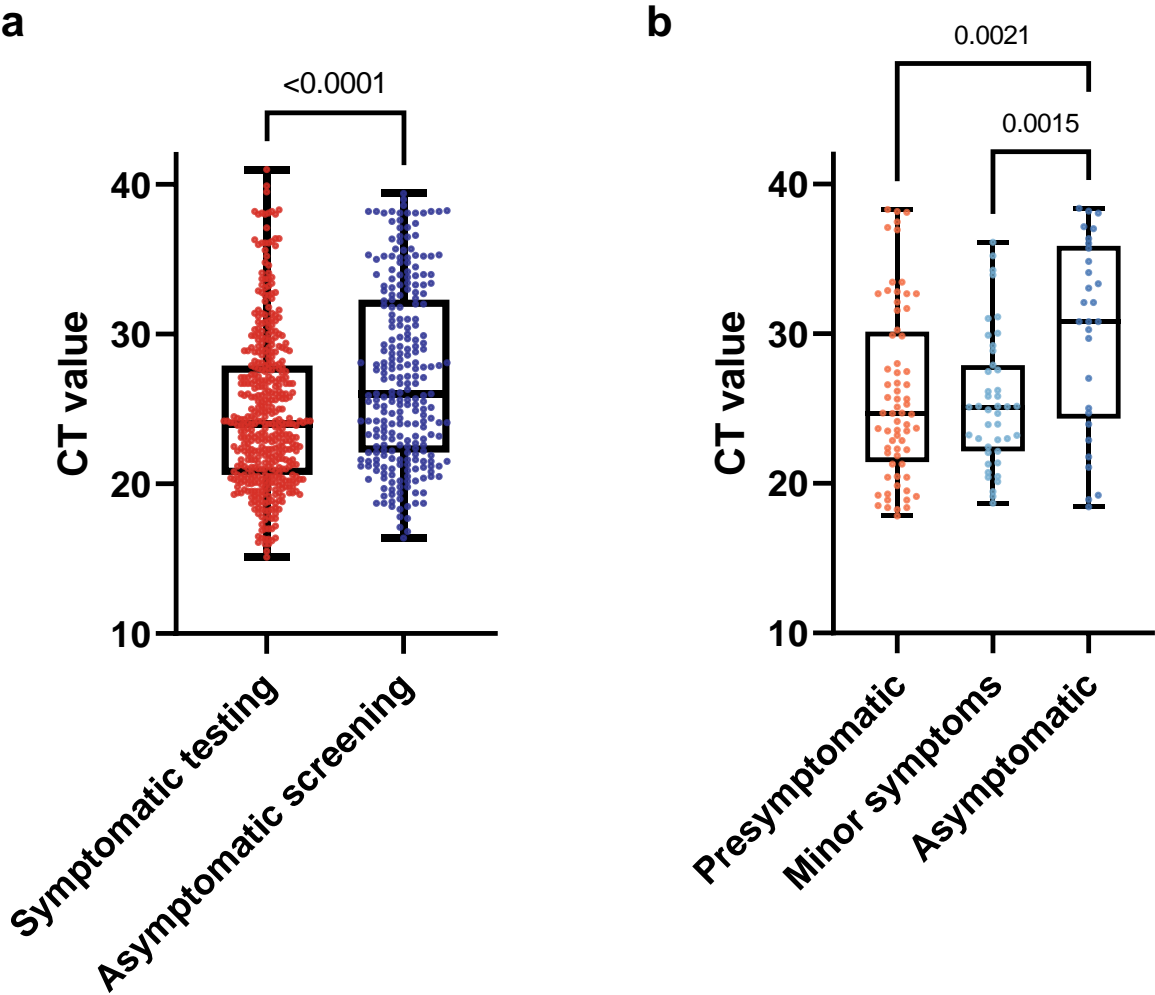
# Extended Data Fig. 2: Technical validation of swab pooling.



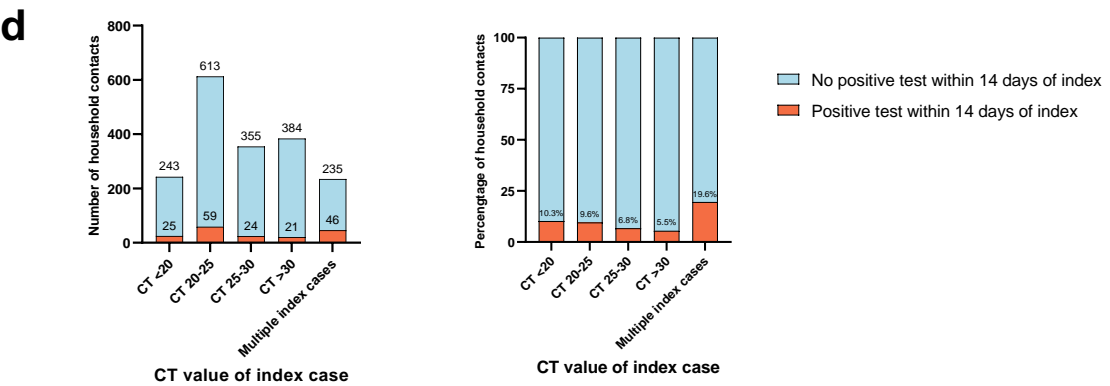
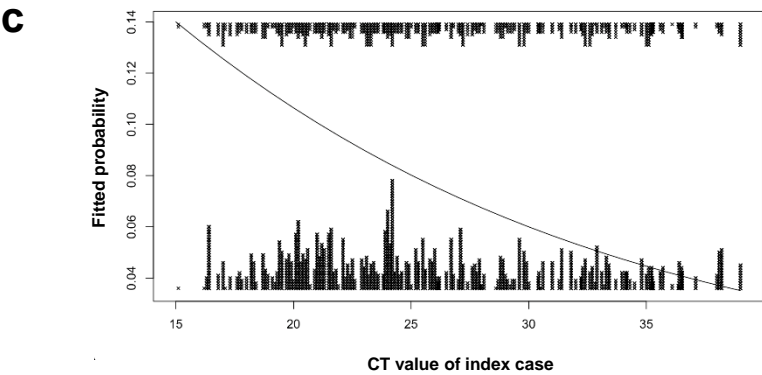
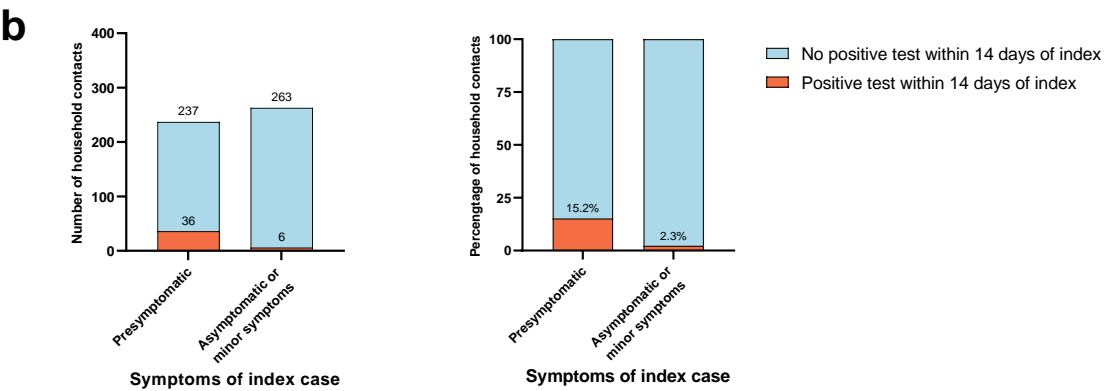
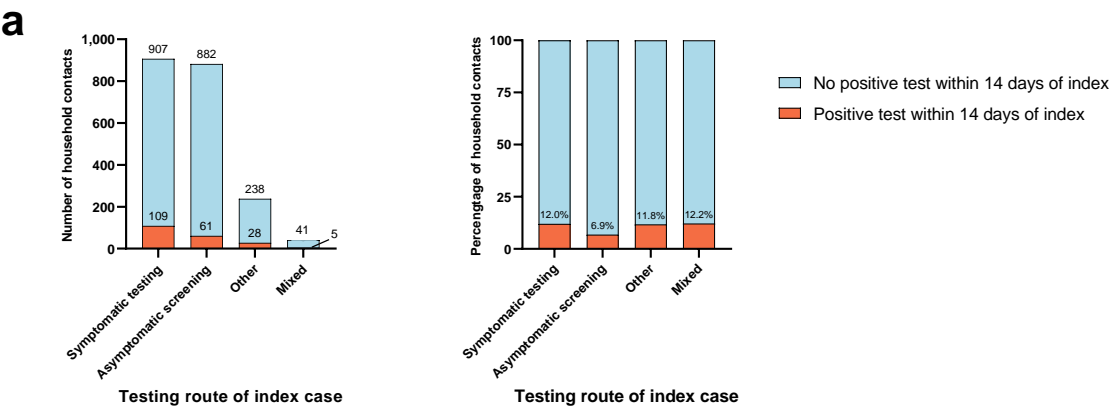
Extended Data Fig. 3: Symptoms identified by telephone survey.



Extended Data Fig. 4: Comparison of CT values by testing pathway and symptoms.

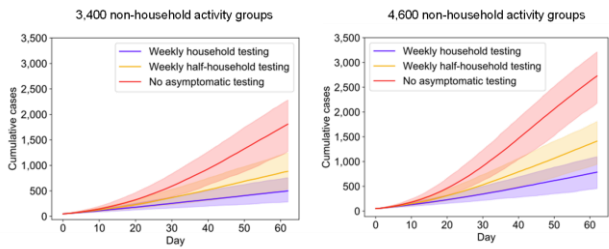


# Extended Data Fig. 5: Secondary household attack rates.

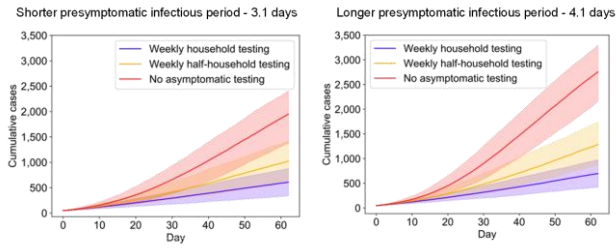


# Extended Data Fig. 6: Sensitivity analyses.

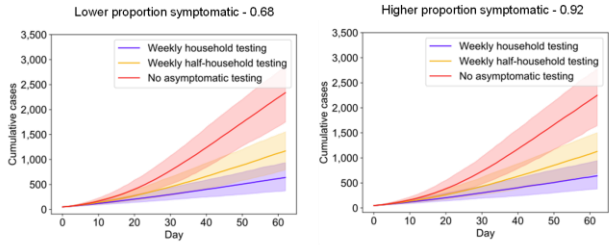
a: Number of non-household activity groups



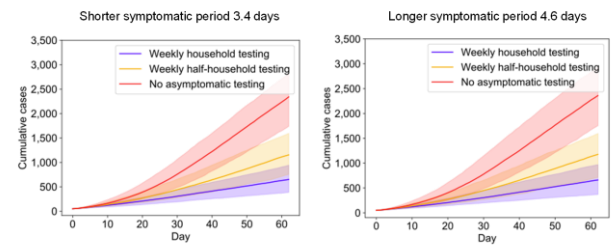
e: Mean presymptomatic infectious period



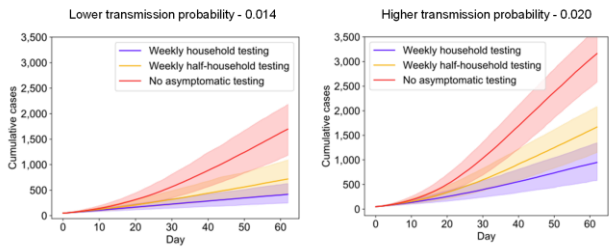
b: Proportion symptomatic



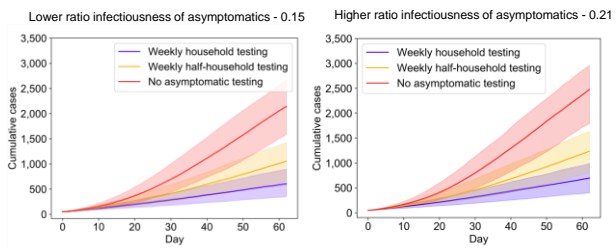
f: Mean infectious period after symptoms develop



c: Probability of transmission for a household contact per day



g: Ratio of infectiousness of asymptomatics (compared to symptomatics)



d: Ratio of probability of transmission for a non-household contact per day to probability of transmission for a household contact per day

