

Supplementary information

Association between allergen-specific immunoglobulin E positivity, allergic rhinitis symptoms, and quality of life (QOL) in school-aged children

Daisuke Watanabe¹, Sanae Otawa², Megumi Kushima², Hideki Yui², Ryoji Shinohara²,
Zentaro Yamagata², Daiju Sakurai¹, Kunio Miyake^{3*}, and the Yamanashi Adjunct Study
of the Japan Environment and Children's Study Group⁴

Supplementary Table S1. Relationship between HDM-specific IgE sensitization and allergic rhinitis symptoms

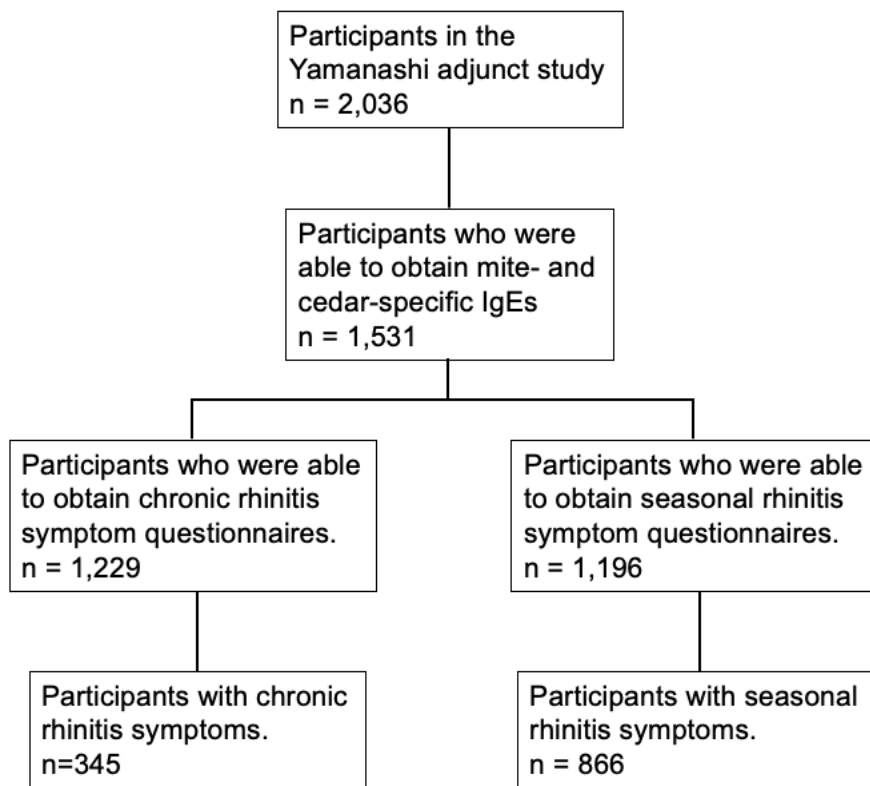
HDM-specific IgE	Symptoms of perennial allergic rhinitis		p-value
	No	Yes	
Negative	504 (88.0)	69 (12.0)	< 0.001
Positive	380 (57.9)	276 (42.1)	

p-values were obtained from the chi-square test.

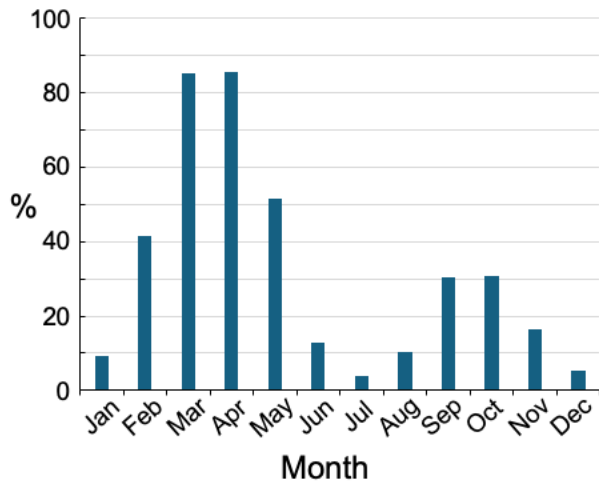
Supplementary Table S2. Relationship between JCP-specific IgE sensitization and allergic rhinitis symptoms

JCP -specific IgE	Symptoms of seasonal allergic rhinitis		p-value
	No	Yes	
Negative	210 (55.9)	166 (44.1)	< 0.001
Positive	120 (14.6)	700 (85.4)	

p-values were obtained from the chi-square test.



Supplementary Figure S1. Flow chart of the participants.



Supplementary Figure S2. Months when SAR symptoms appear