

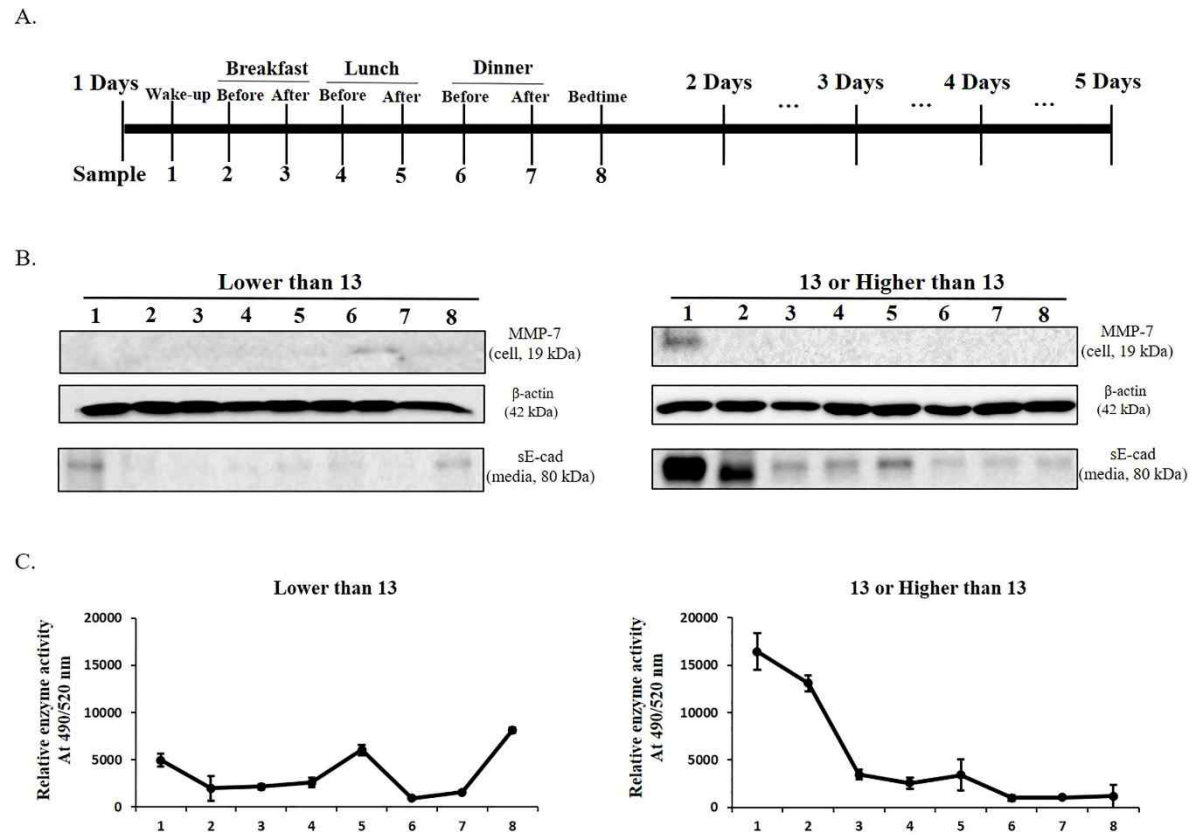
Usefulness of Matrix Metalloproteinase-7 in saliva as a diagnostic biomarker for laryngopharyngeal reflux disease.

Nu-Ri Im¹, Byoungjae Kim^{1,2}, Kwang-Yoon Jung¹, Seung-Kuk Baek¹.

¹Department of Otorhinolaryngology-Head and Neck Surgery, Korea University, College of Medicine, Seoul, South Korea;

²Neuroscience research institute, Korea University, College of Medicine, Seoul, Republic of Korea

Supplementary Figure 1. Soluble E-cadherin protein level, MMP-7 protein level, and MMP-7 enzyme activity within saliva samples over time. (A) Schematic diagram of the saliva sampling timeline (B) Expressions of soluble E-cadherin and MMP-7 protein according to sampling time in control and study groups. (C) MMP-7 enzyme activity according to sampling time in control and study groups. Sampling time is indicated by numbers (1 to 8).



**Supplementary Figure 2. Expression change of soluble E-cadherin and MMP-7 in saliva
(Full-length blots/gels of Supplementary Figure 1)**

