

Supplementary information

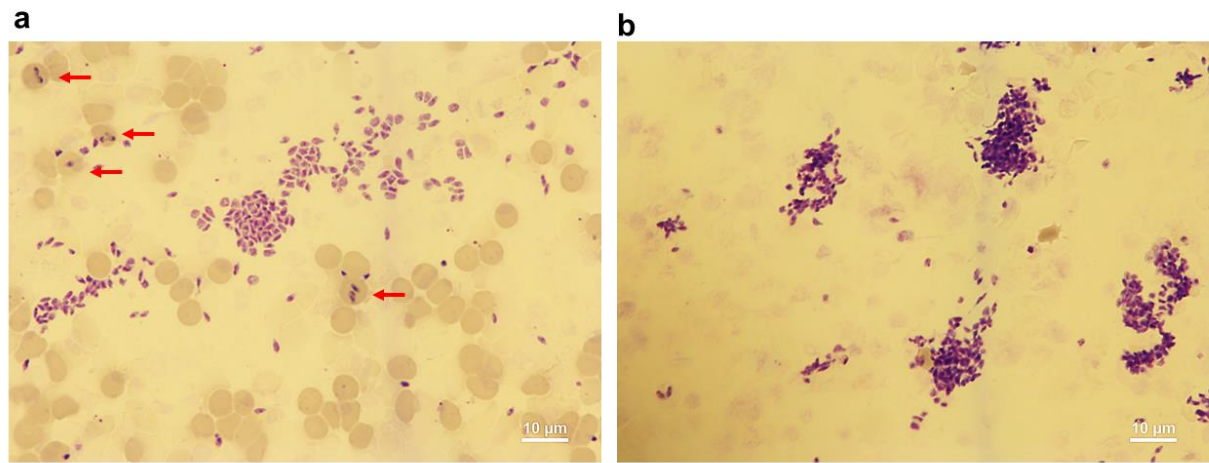
Video 1. Live imaging microscopy of GFP-expressing *B. bovis*. Parasites were imaged at a rate of 1 frame/30 seconds. The egress of a maltese stage parasite and invasion into new RBC, binary fission, and its egress could be seen.

Sup Fig 1. Evaluation of filter isolated merozoites. Free merozoites after one (a) or two rounds of filtration (b). Red arrows show intact iRBCs.

Sup Fig 2. Indirect immunofluorescence microscopy of BbVEAP knockdown parasites.

Indirect immunofluorescence microscopy test of BbVEAP-myc-*glmS* parasite in the absence (-) or presence (+) of GlcN at 24 h after invasion (α -myc, green; α -SBP4, red). The parasite nuclei were stained with Hoechst 33342 (blue). Scale bar = 5 μ m.

Sup Fig. 1



Sup Fig. 2

