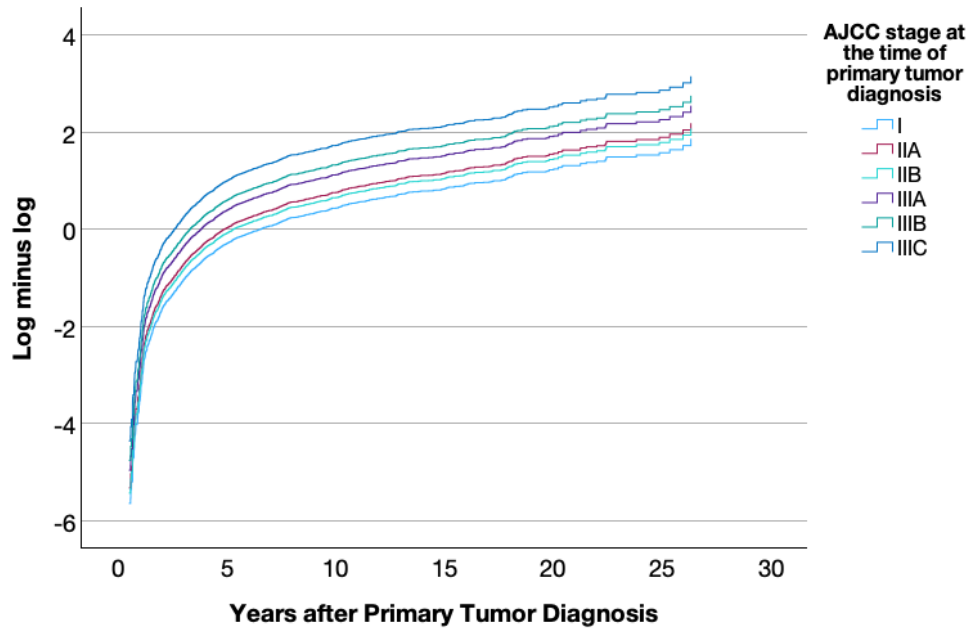
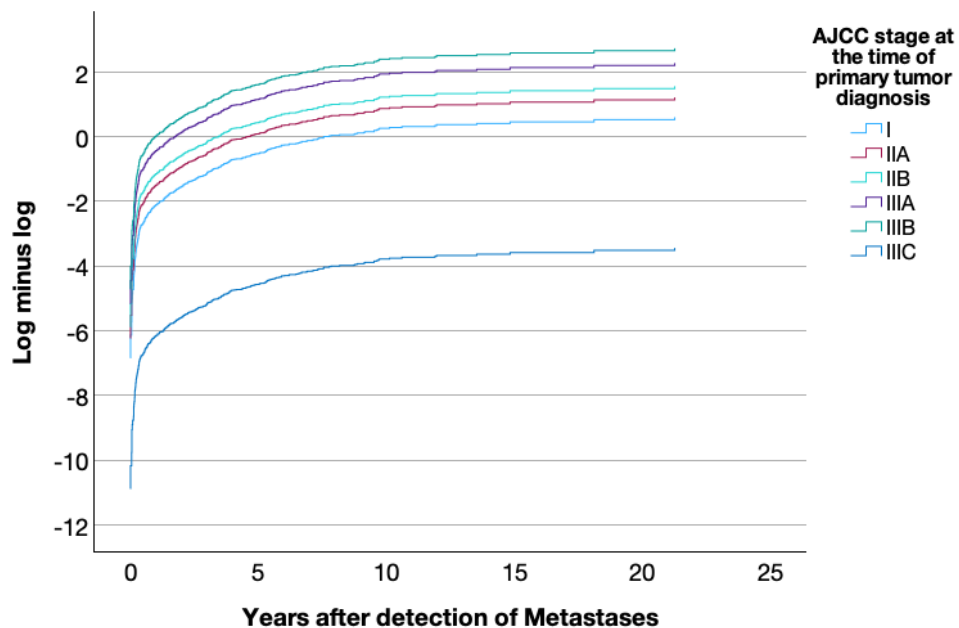


A**B**

Supplementary Figure. Log-Minus-Log Survival Curves

These plots illustrate the log-minus-log survival curves for the AJCC stage at the time of primary tumor diagnosis. A) Shows the cohort of 1,491 patients who died from metastatic uveal melanoma, depicting the time interval from primary tumor diagnosis to death. B) Shows the cohort of 349 patients with metastatic disease, depicting the time interval from detection of metastases to death. The parallel nature of the curves without any crossings indicates that the proportional hazards assumption is reasonably satisfied for the AJCC stage covariate. However, the log-minus-log survival curve for patients initially diagnosed at stage IIIC shows a noticeably larger gap to stage IIIB compared to the gaps between other adjacent stages. This observation suggests a greater difference in baseline hazard or survival experience between stage IIIC and stage IIIB patients. Nevertheless, this difference does not constitute a violation of the proportional hazards assumption, as it reflects a consistent proportional difference over time.