

Supplementary Figures

Distribution of eAP and iAP Features

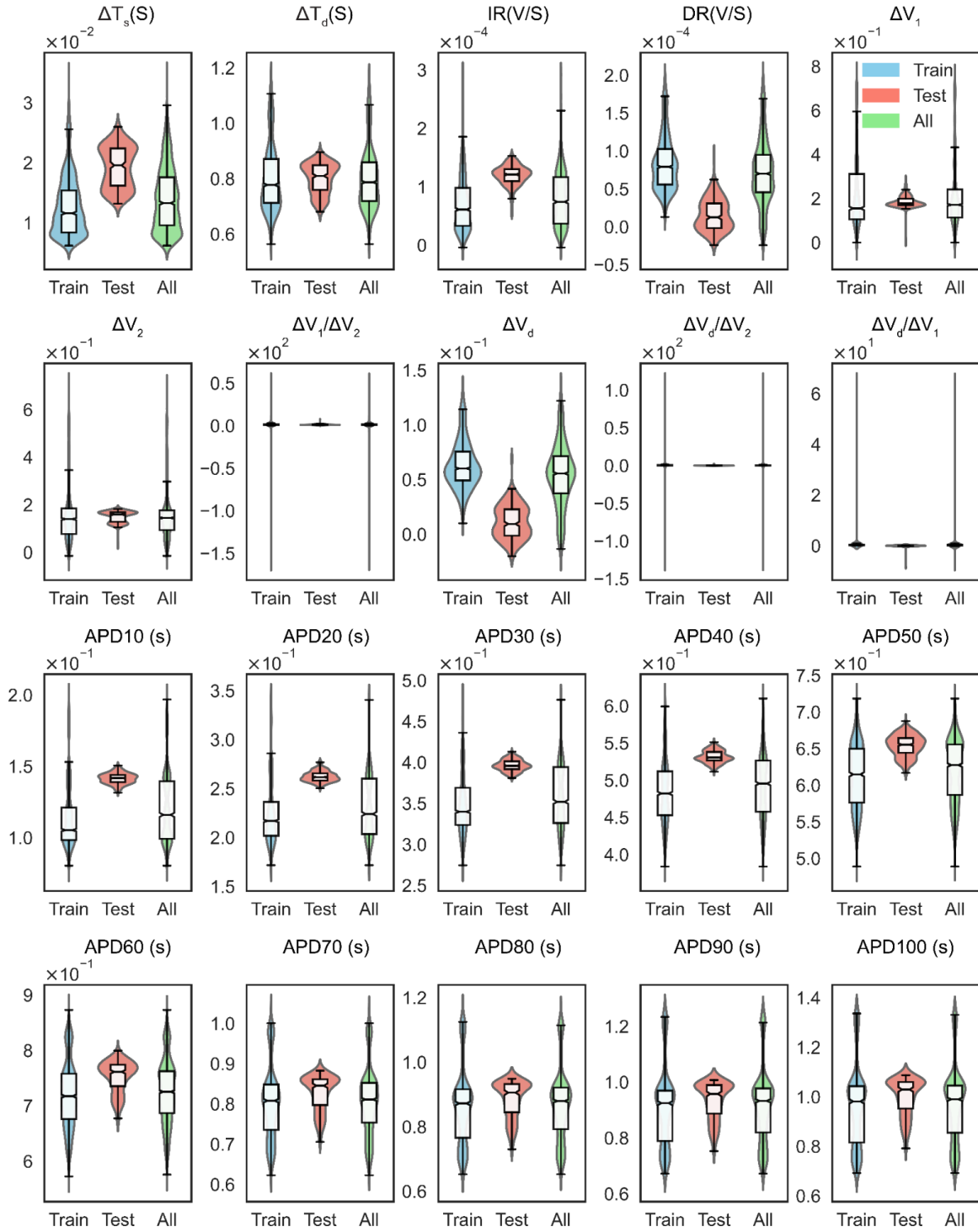
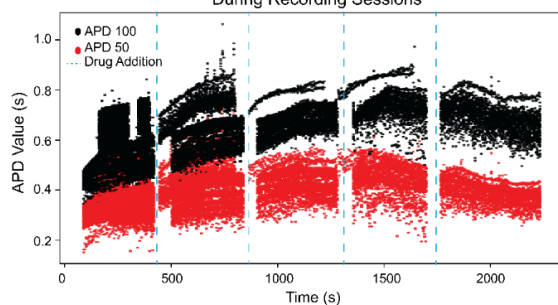
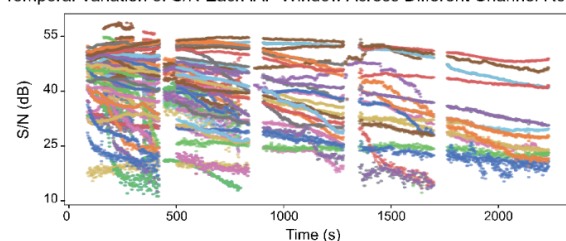


Figure SF-1. a) Violin plot distribution of eAP and iAP features for the data utilized in the machine learning and deep learning models, as depicted in Figure-3b, shown in green. The blue and red plots represent the distribution of the training set and test set for eAP and iAP, respectively.

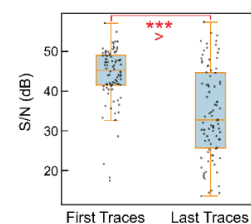
a iAPs APD Changes with Stepwise Dofetilide Doses (0.3, 1, 3, and 10 nM) During Recording Sessions



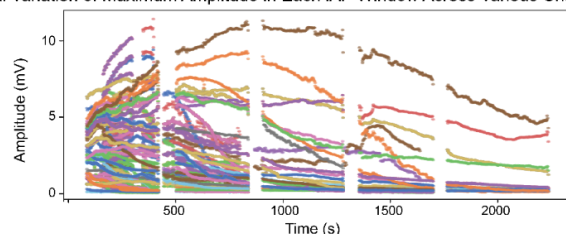
b Temporal Variation of S/N Each iAP Window Across Different Channel Recordings



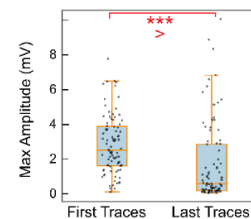
c iAP First Vs Last Traces S/N



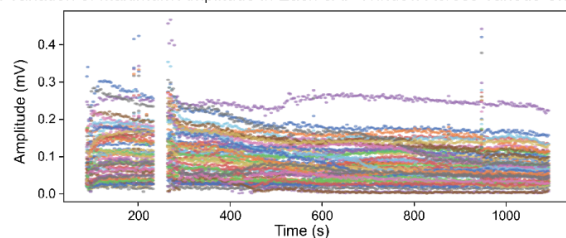
d Temporal Variation of Maximum Amplitude in Each iAP Window Across Various Channel Recordings



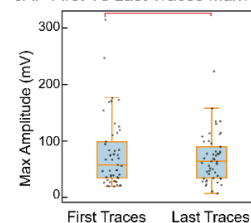
e iAP First Vs Last Traces Max Amplitude



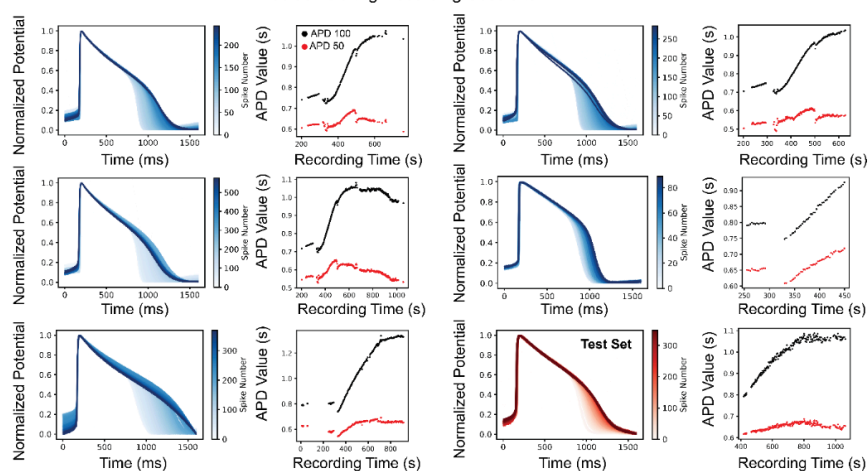
f Temporal Variation of Maximum Amplitude in Each eAP Window Across Various Channel Recordings



g eAP First Vs Last Traces Max Amplitude



h iAPs Change and iAPs APD Response to Single Step 10 nM Dofetilide Addition During Recording Sessions



i Comparing Max Induced APD 100 between Single-Step Vs Multi-Step Drug addition

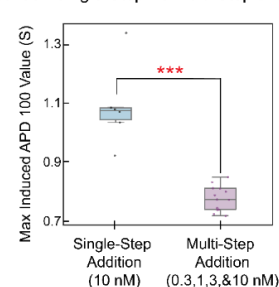


Figure SF-2. **a)** Comparison of iAP APD values upon drug addition, based on experiments comparing neighboring NEA channels' iAPs, from 88 unique iAP channels across two sets of recordings. The dashed line indicates the time of drug addition. **b)** Showcase of the variation in iAP signal-to-noise ratio (S/N) over time from the same recordings as above. **c)** Comparison of the last iAP in the recording with the first one in terms of S/N, demonstrating a significant drop in value (P value = [***p-value: 8.63×10^{-15}]) as the experiment progresses, due to the resealing of cell membrane pores. **d)** Presentation of the variation in iAP window's maximum amplitudes (spike amplitude) over time from the same recordings as above. **e)** Comparison of the last iAP in the recording with the first one in terms of amplitude, showing a significant drop in value (***p- value = [1.1×10^{-08}]) as the experiment progresses, attributed to the resealing of cell membrane pores. **f)** Presentation of the variation in eAP maximum amplitude (spike amplitude) over time for 49 distinct eAP channels. **g)** Comparison of the last eAP in the recordings with the first one in terms of amplitude, indicating no significant change (p- value = [0.262]). **h)** iAPs collected from distinct sets of recordings by the addition of dofetilide, used for the machine learning and deep learning aspects of this study.

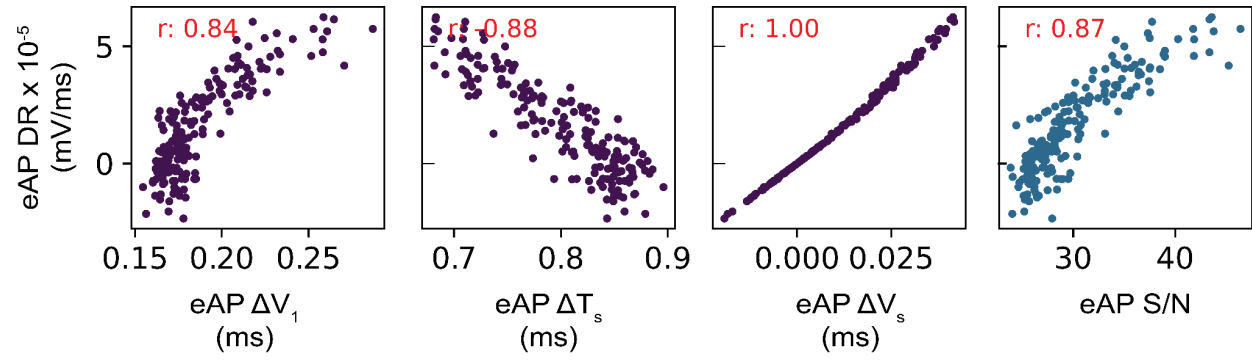


Figure SF-4. Correlation between eAP features in the test set used to evaluate the XGBoost and deep learning models.