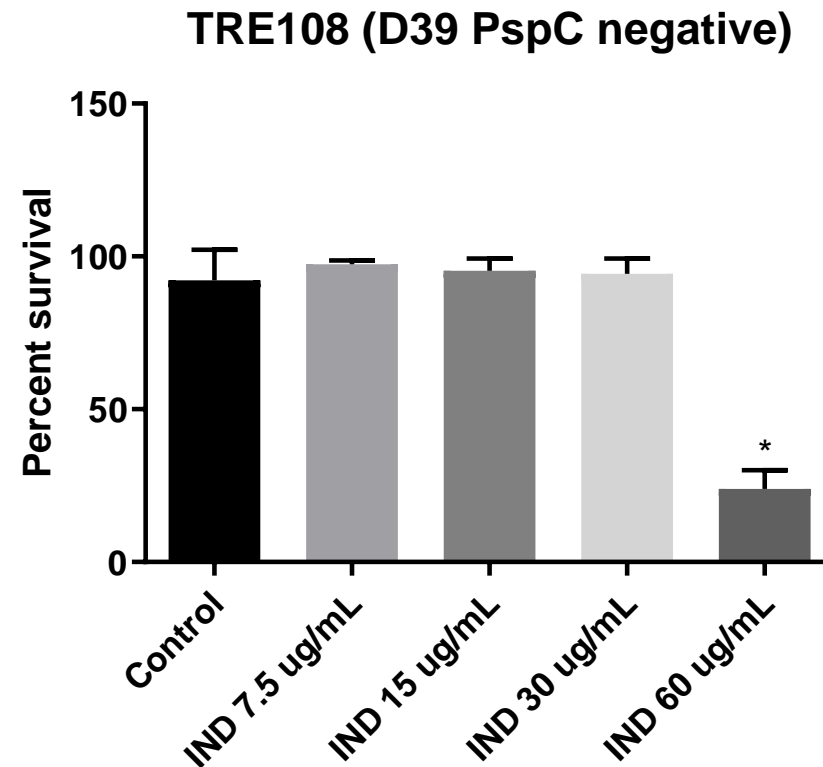


**Supplementary Figure 1. Choline-chloride wash reduces the amount of PspA on the pneumococcal surface.** Control and CC-washed bacteria were incubated with anti-PspA antibodies and anti-mouse IgG FITC, and the median fluorescence was detected using FACS Canto (BD Biosciences). a) Histogram of control (black line) and CC-washed bacteria (grey). b) Statistical analysis was performed using Student's t test. \* $p \leq 0,05$ .



**Supplementary Figure 2. Indolicidin action on a PspC negative pneumococcal strain.** The bacteria were treated with increasing concentrations of indolicidin and plated. The control group was incubated with PBS. Each column represents the percent survival after treatment, in comparison with the control. Statistical analysis was performed using one-way ANOVA with Dunnet's multiple comparisons test. \* $p \leq 0,05$ .