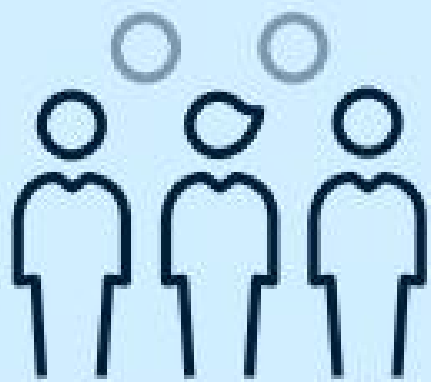


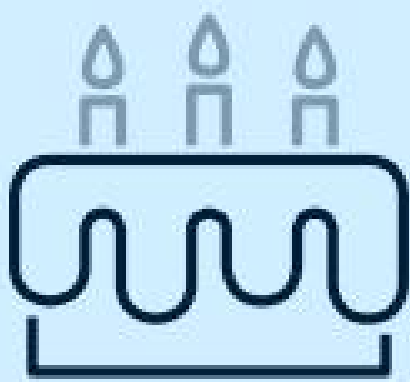
# Restrictions

from 26 October 2020  
(Mask rules from 29 October)



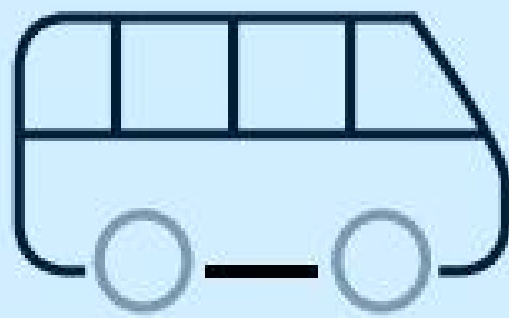
**Assemblies**

Ceiling on gatherings of 10 people.  
This also applies to private parties held outside private homes and gardens. There are exceptions, see other points.



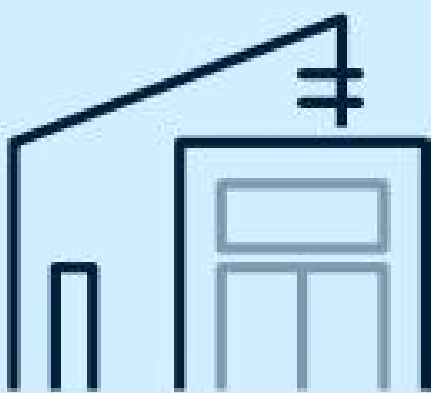
**Private events and social contacts**

Recommendation of max. 10 people in a private home and max. 10 social contacts.  
Limit social events.



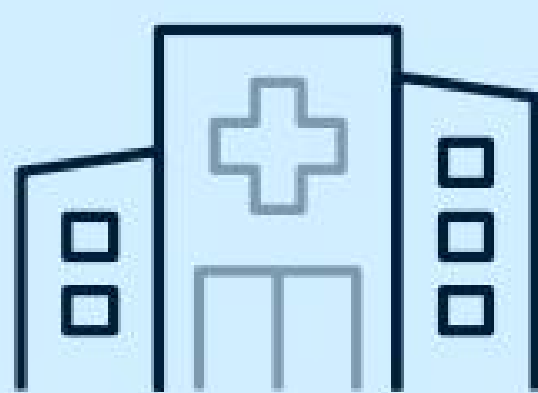
**Collective transport**

Requirement for mask or visor.  
Avoid rush hour. Requirement for a seat ticket on long-distance trains.



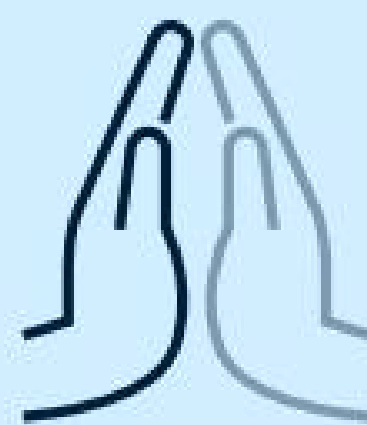
**The retail trade**

(Grocery stores, department stores, department stores, bazaars, arcades, etc.)  
Requirement for mask or visor. Prohibition on the sale of alcohol after 10 p.m. Restrictions, e.g. distance and number. Requirements for visible supervisory staff in stores of over 2,000 m2.



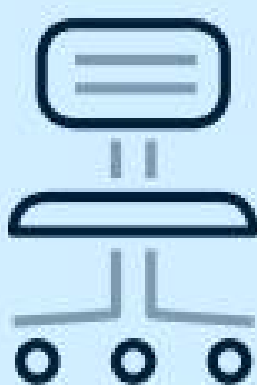
**The health and care sector**

Requirements for masks or visors in the health and elderly areas as well as certain parts of the social area.



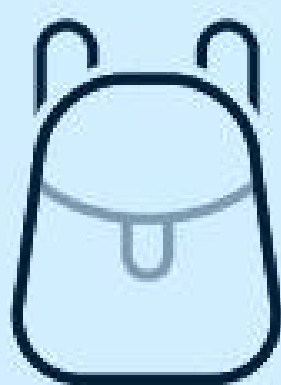
**Church and religious community**

Max. 500 present at the same time (however depending on the size of the room). Max. 50 people at outdoor funerals.



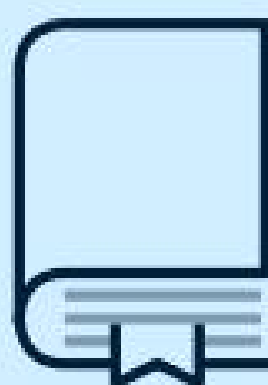
**Workplaces**

Homework to the extent that it is possible and appropriate in relation to the work.  
Recommendation to cancel social events.



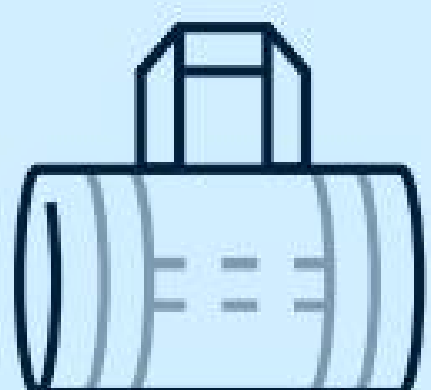
**Day care and primary schools**

Staff must wear a visor.



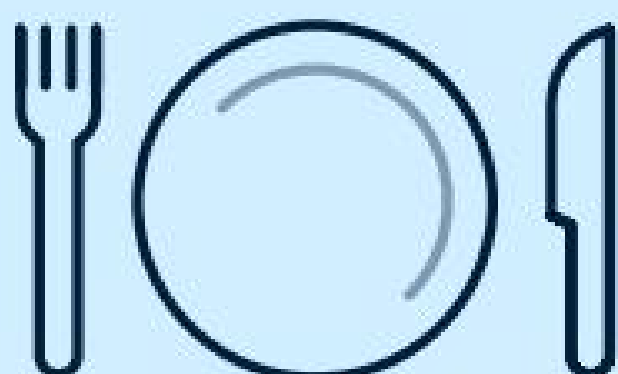
**Youth education, adult education, further education, etc.**

Requirement for partial use of mask or visor.



**Sports and association activities**

Ban on gatherings of 50 people for sports activities for children and young people. Other sporting activities are subject to a ban on gatherings of 10 people.



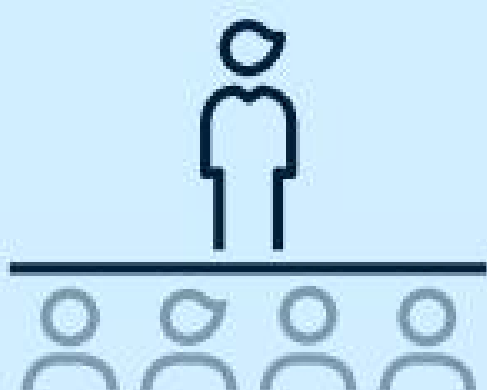
**Restaurants, cafes, etc.**

Must close at 10 p.m. Requirement for mask or visor indoors - but not when sitting down.  
Companies must be of max. 10 people.



**Bars, pubs, etc.**

Must close at 10 p.m. Requirement to use a mask or visor - but not when sitting down.



**Venues, conferences, etc. with seated audience**

Max. 500 people if seated and facing a stage, cinema screen, track or similar.



**Discotheques, nightclubs, etc.**

Closed. In addition, a ban on the consumption of alcohol on buses – including party buses.



**Indoor cultural institutions and sports facilities**

Requirement for mask or visor. Restrictions, e.g. distance and number.



**Professional sports**

Max. 500 people if seated and facing a stage, cinema screen, track or similar.