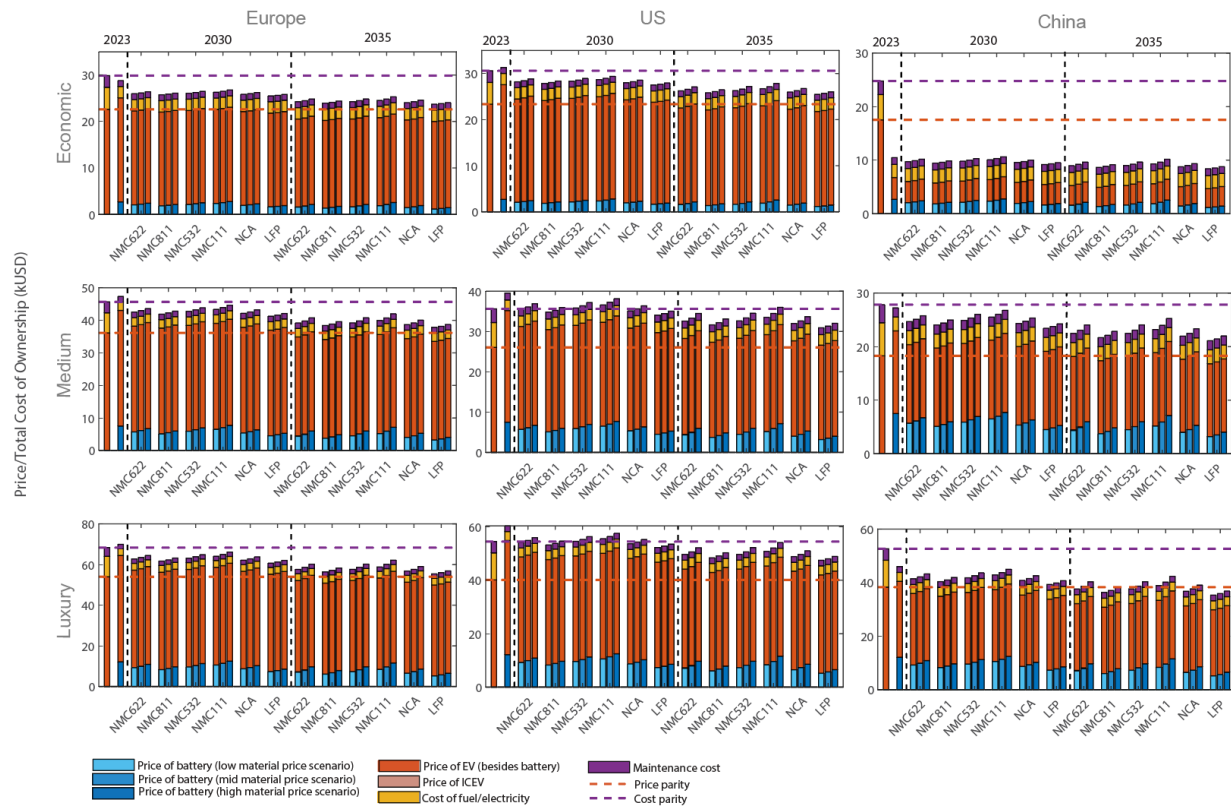
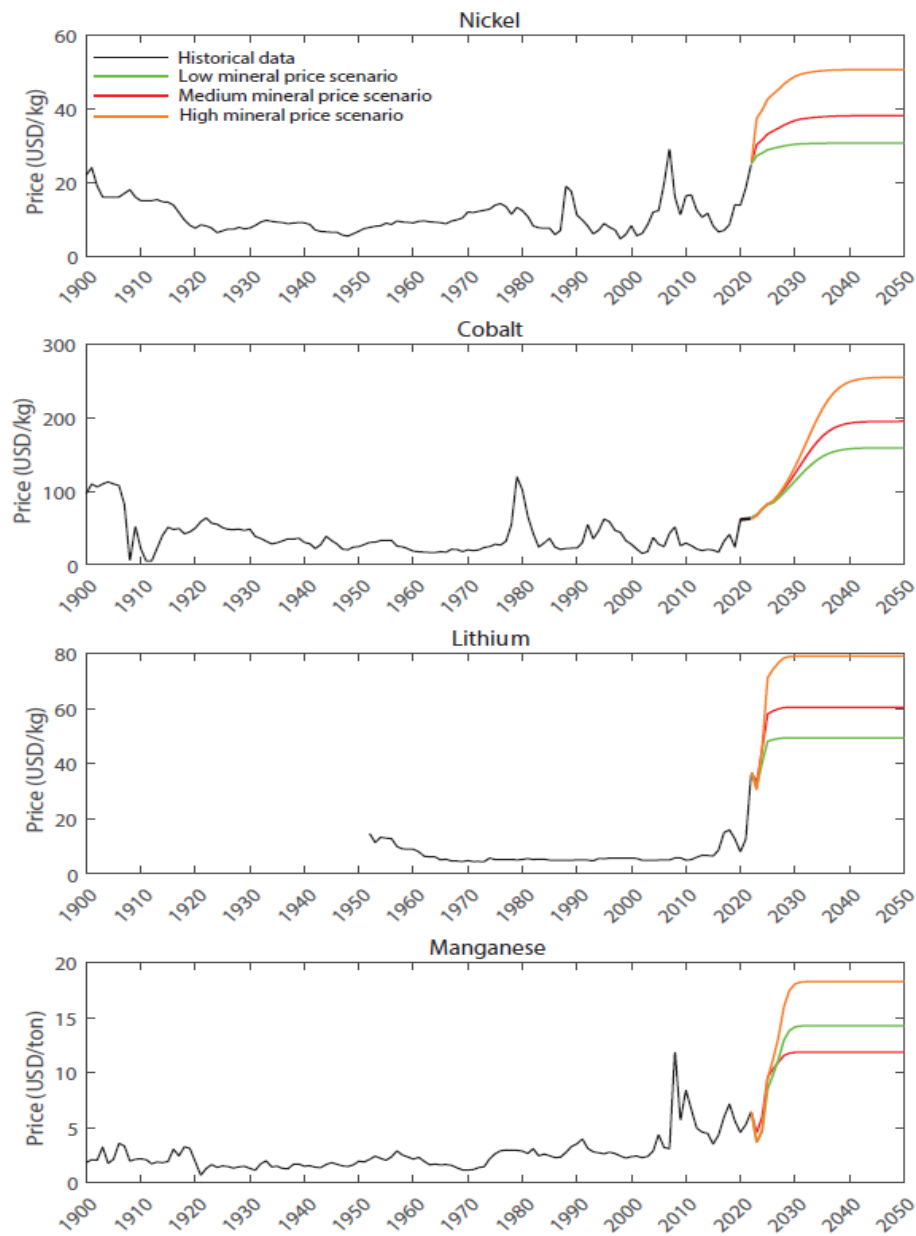


Supplementary Figures



Suppl. Fig. 1 | EV and ICEV price and cost parity under different mineral price scenarios. There are four variations of Nickel Manganese Cobalt (NMC) batteries, where the numbers in the labels denote ratio of these metals in the cathode, and three other types of batteries, including the Nickel Cobalt Aluminum Oxide (NCA) and Lithium Iron Phosphate (LFP) batteries.



Suppl. Fig. 2 | Historical and projected battery mineral prices.