

Construction of 200 prediction points along shoreline

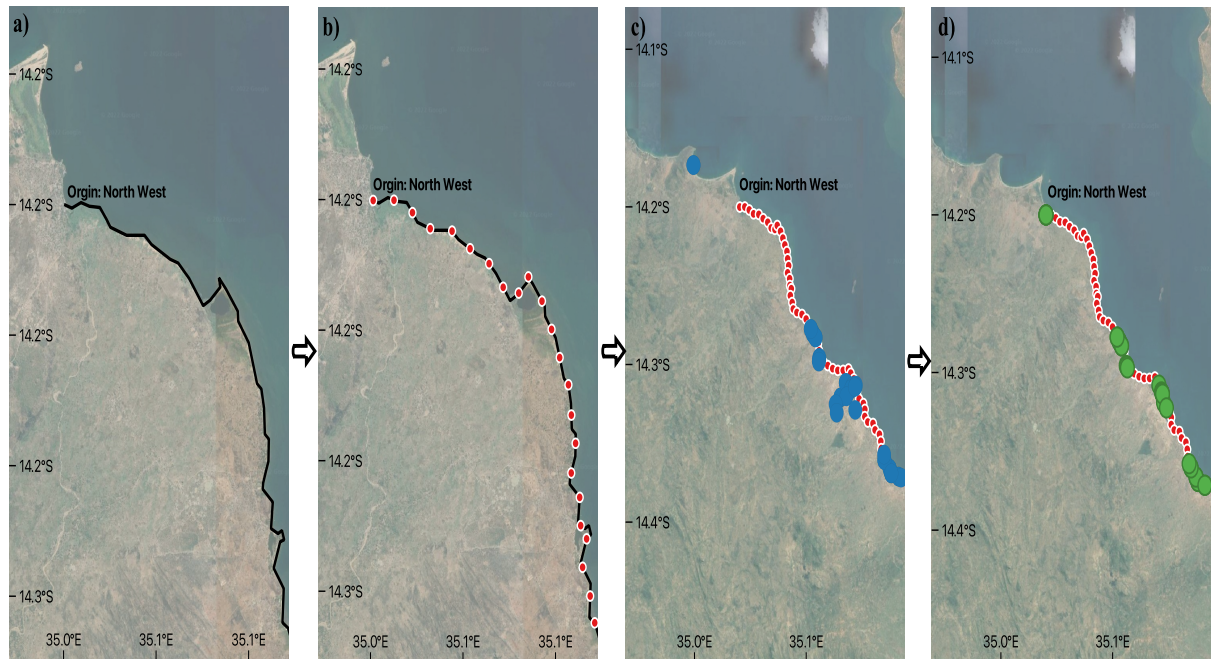
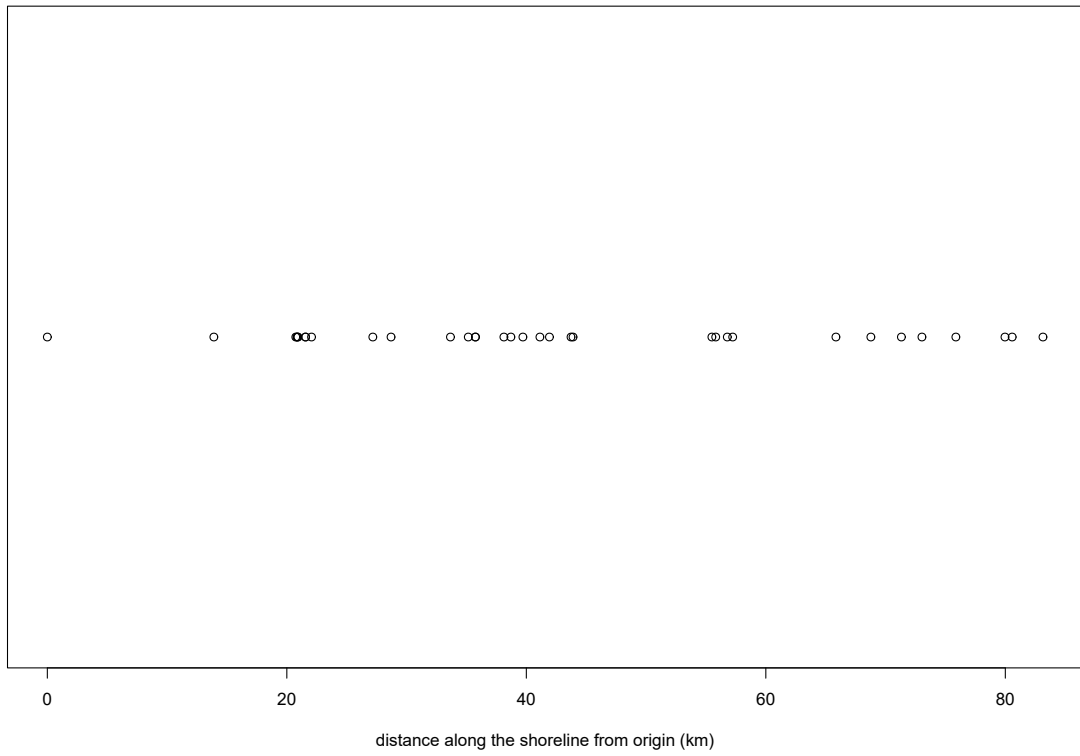


Figure S1: Flow diagram showing the stages for constructing the 200 predictions along the shoreline. **a)** A 2-D linestring was drawn by hand following the shoreline as shown by Google Satellite imagery, **b)** the linestring was re-sampled to 4000 equally spaced vertices and resampled them to 200 equally intervals (red dots), **c)** observed sampling site locations (blue dots), **d)** each observed sampling site location was snapped to its nearest vertex (green dots).

(a) *Biomphalaria* sp.



(a) *Bulinus* spp.

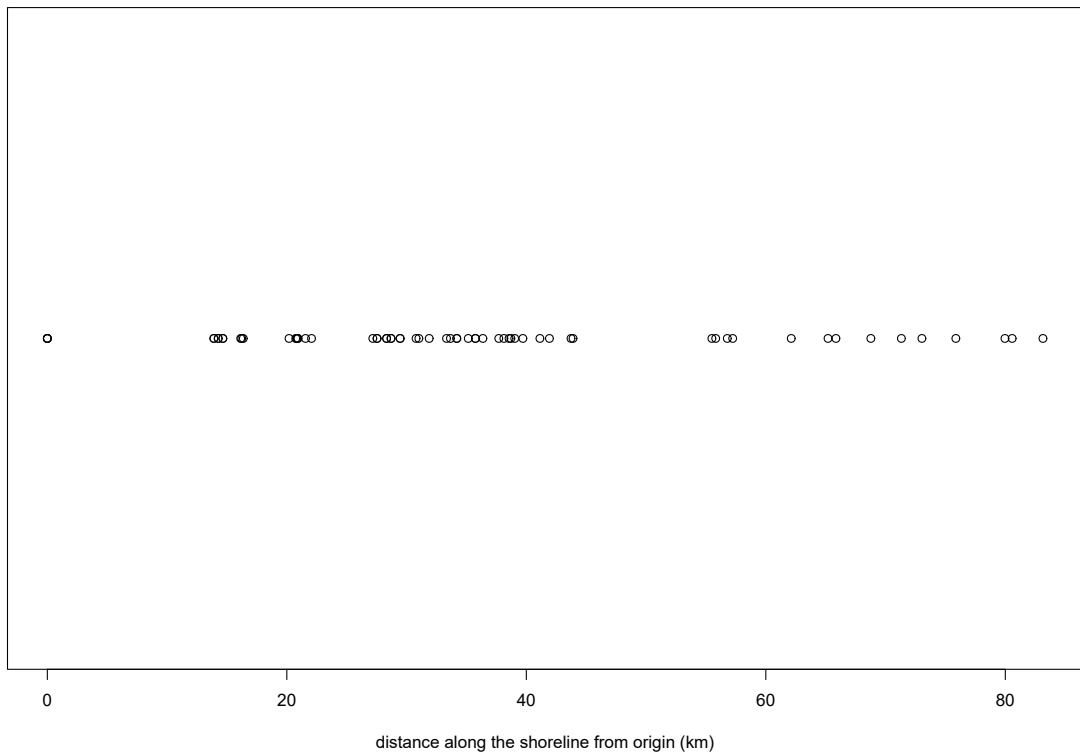


Figure S2: The distance along the line from the origin (northwest-most vertex) to each of the snapper observed sampling site locations for each species a) *Biomphalaria* sp. b) *Bulinus* spp..