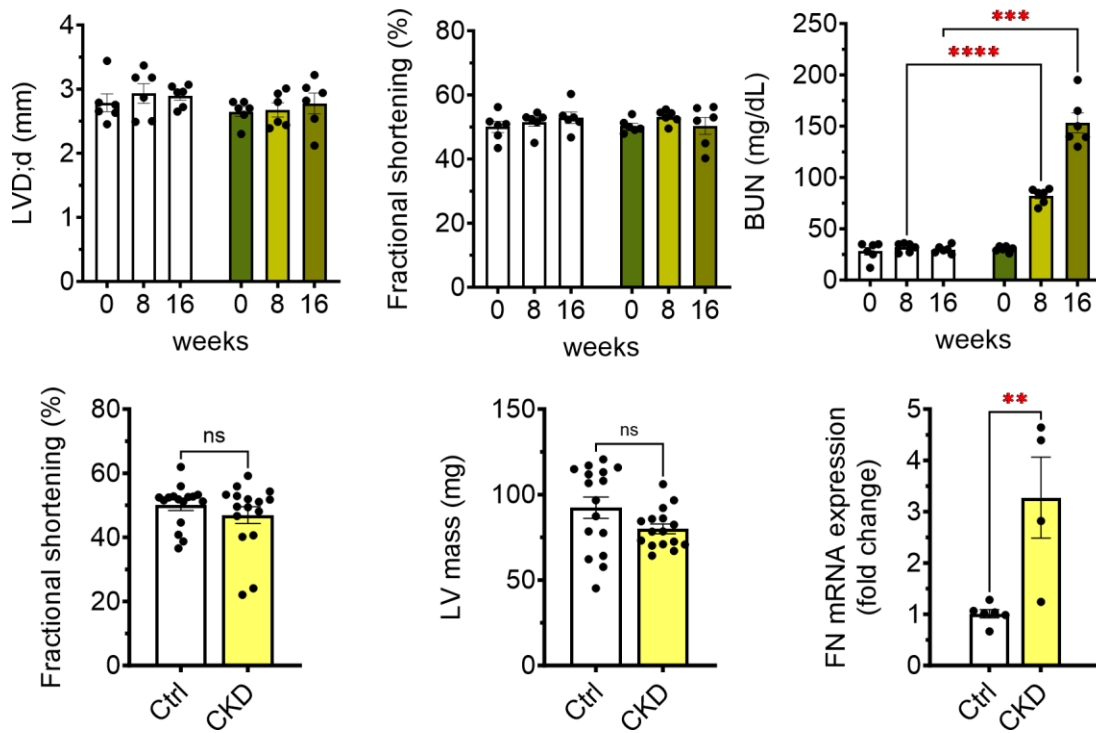
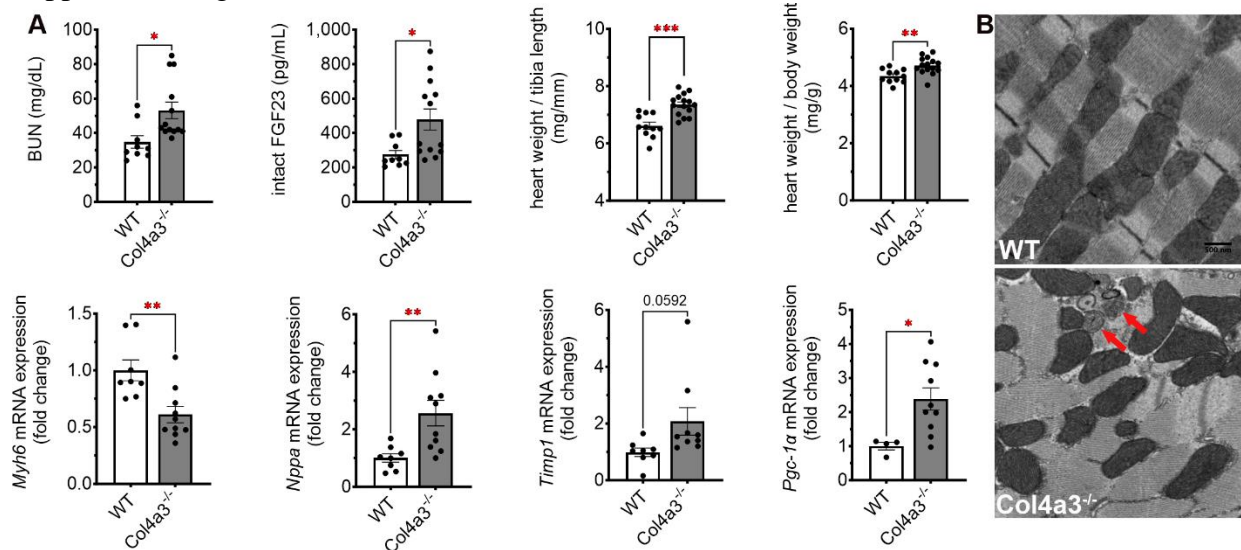


Supplemental figure S1- cardiac functional parameters of wildtype mice with adenine induced CKD

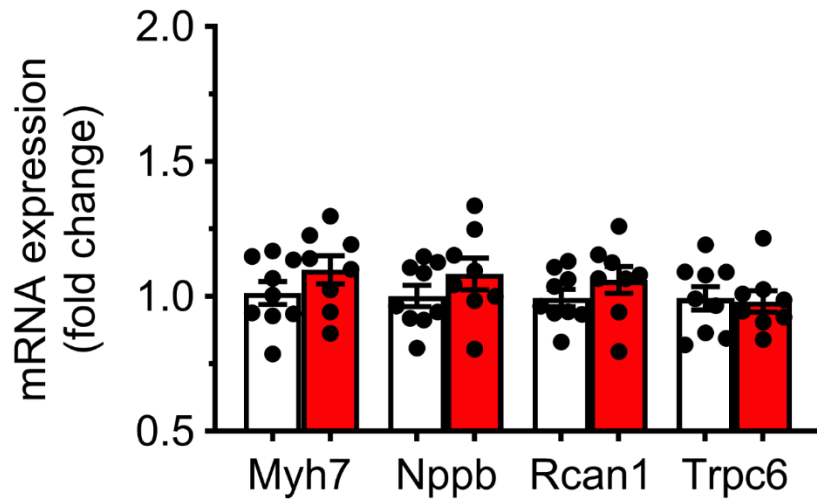
□ Ctrl ■ 0 weeks CKD ■ 8 weeks CKD ■ 12 weeks CKD ■ 16 weeks CKD



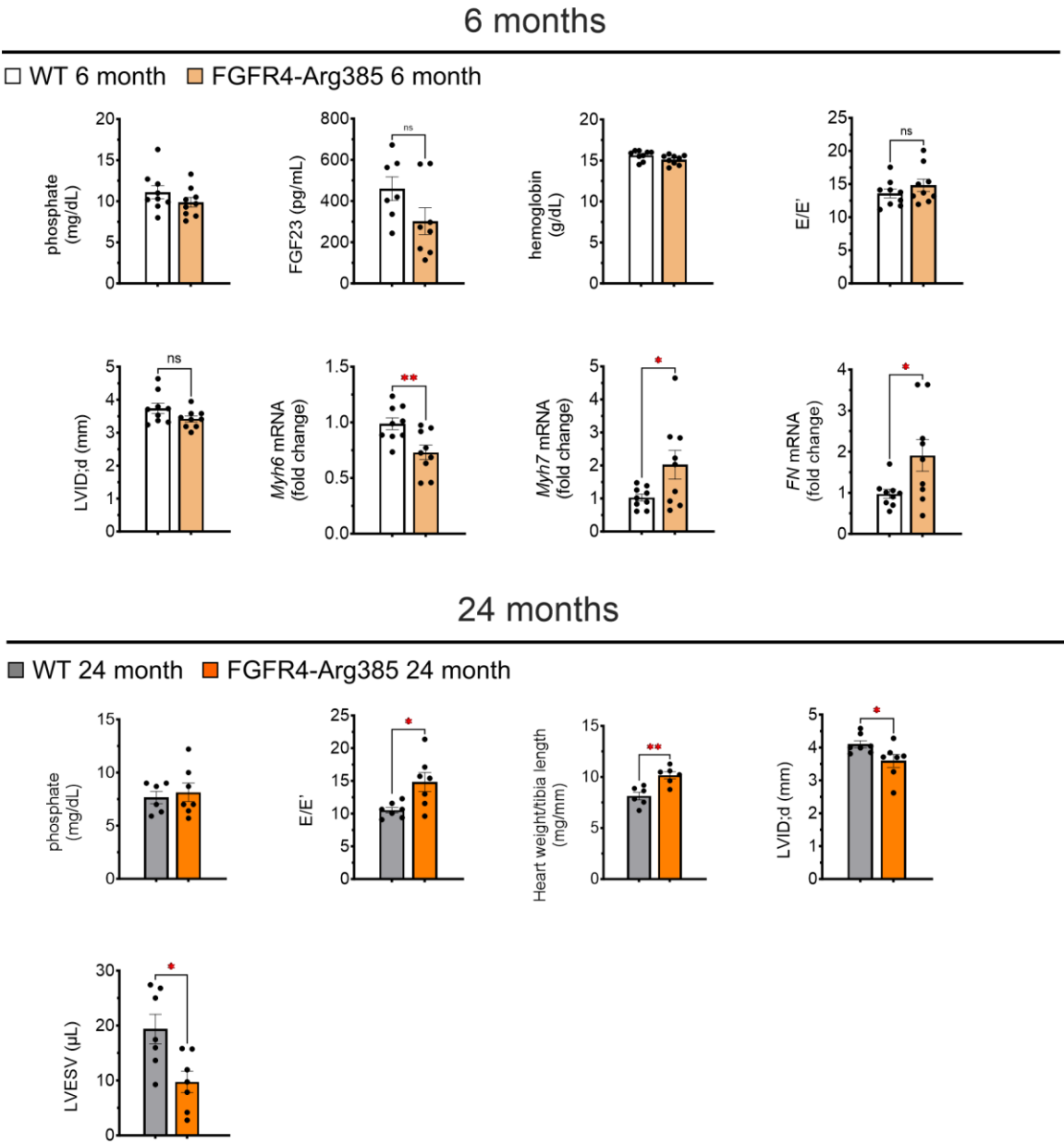
Supplemental figure S2 – cardiac characteristics of Col4a3^{-/-} mice



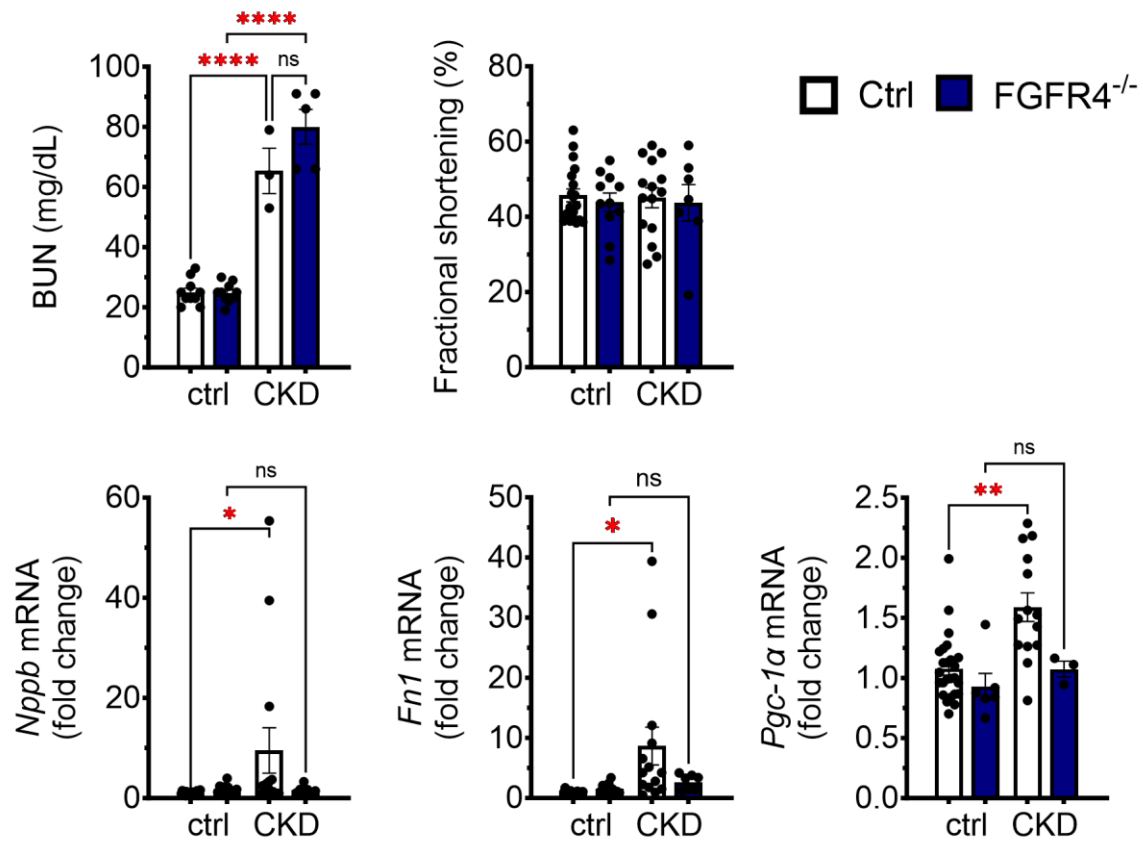
Supplemental Figure S3 - Hypertrophy makers in NRVM treated for 1h with FGF23



Supplemental figure S4 – Additional renal and cardiac function parameters of FGFR4-Arg385 mice.



Supplemental figure S5 – renal and cardiac function in $FGFR4^{-/-}$ mice with CKD



Supplemental figure S6 - Tissue specific deletion of FGFR4 in cardiomyocytes and functional parameters.

