

1

Extended Data for

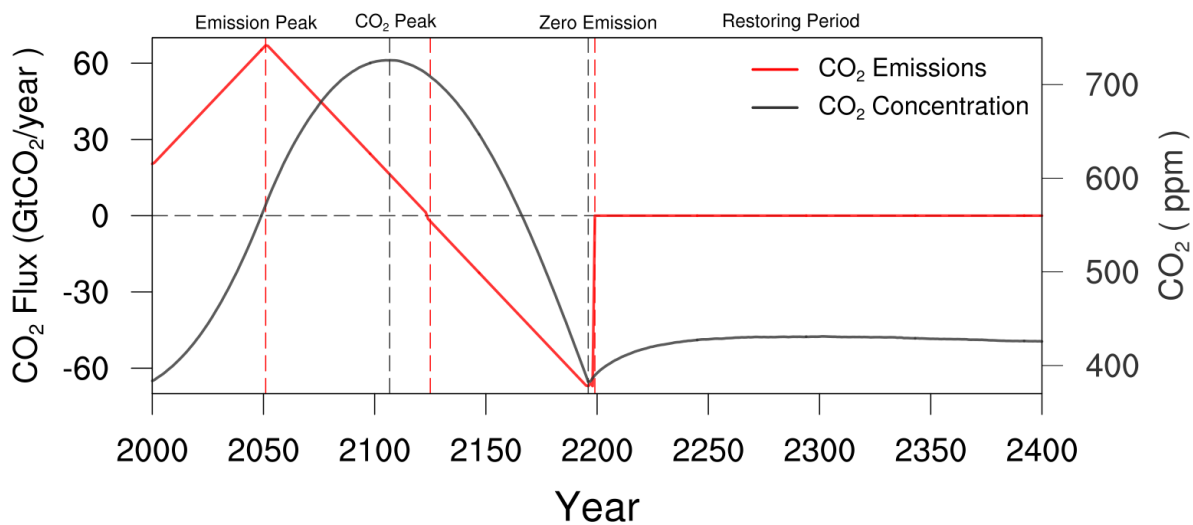
2

Negative CO₂ emissions mitigate extremes of the terrestrial hydrological cycle

3

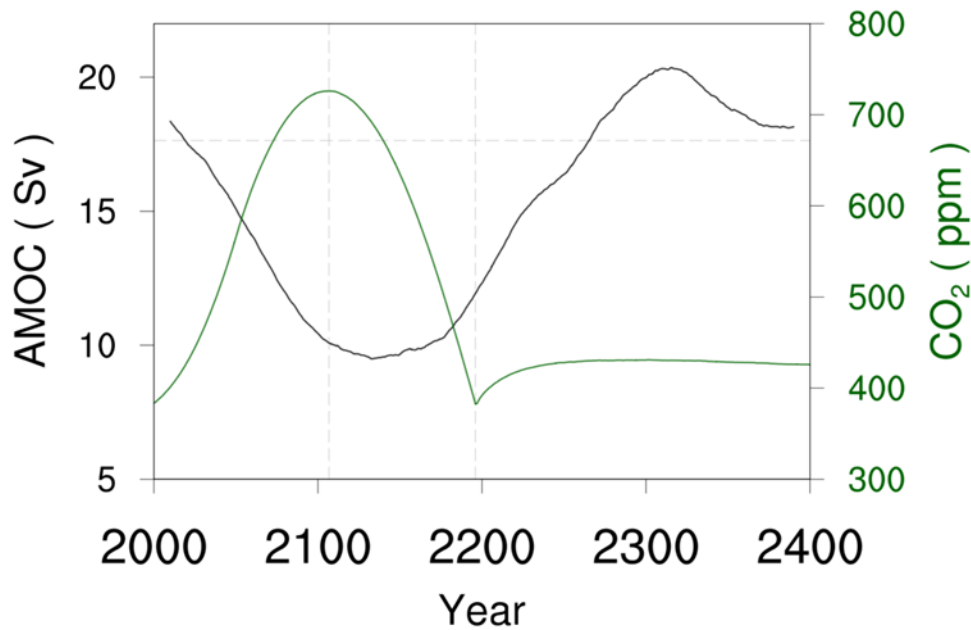
via a vegetation physiological feedback

4

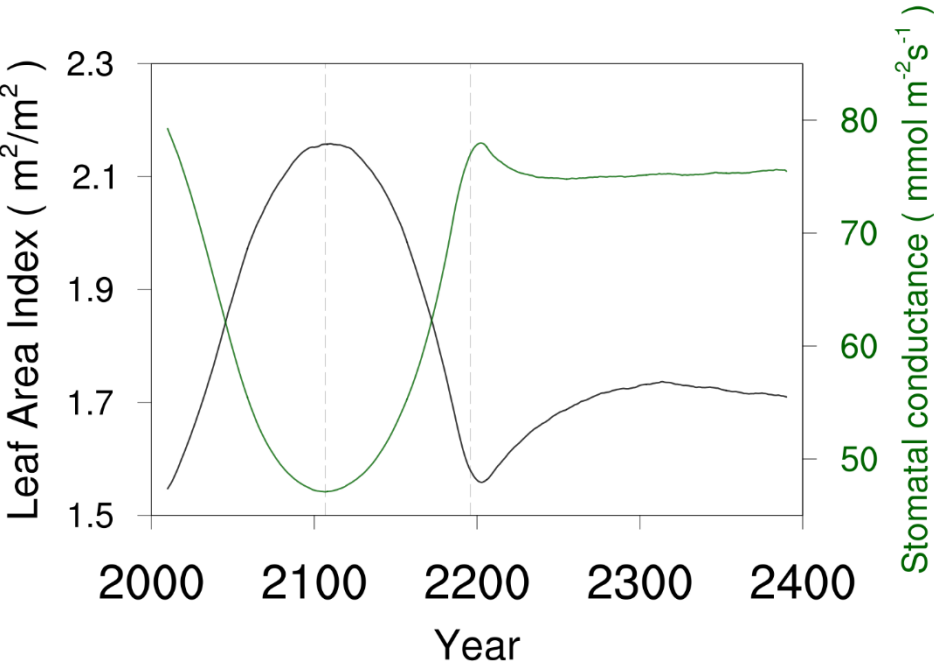


Extended Data Fig. 1 | Time evolution of CO₂ emissions and atmospheric CO₂ concentration.

Time series of anthropogenic CO₂ emissions (red) and ensemble mean CO₂ concentrations (gray). Vertical gray dashed lines indicate the year of the emission peak and the onset of net-zero emissions, respectively. Vertical red dashed lines indicate the year of the peak and restoration of CO₂ concentrations, respectively.



Extended Data Fig. 2 | Time evolution of the AMOC index. Time series of annual mean the AMOC index (black) with CO₂ concentration (green). The AMOC index is defined as the maximum value of streamfunction of the meridional current at 26.7N in the Atlantic Ocean. The zonal dashed line is the period average of reference AMOC value for 2001 to 2030 years. Vertical dashed lines indicate the maximum or restored year of CO₂ concentration. All the calculations are conducted after taking the ensemble mean and the 21-year running mean.



21

22

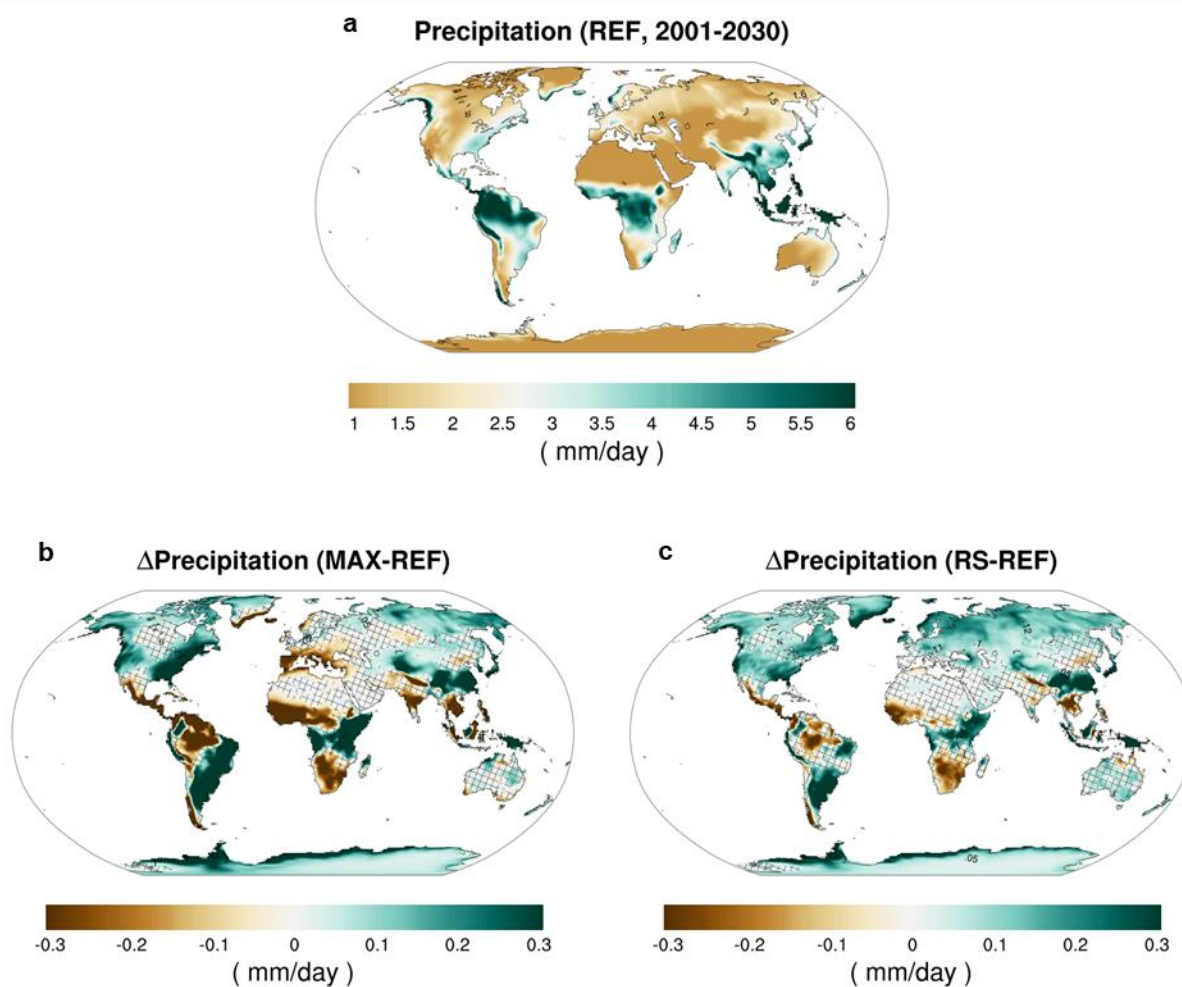
23

24

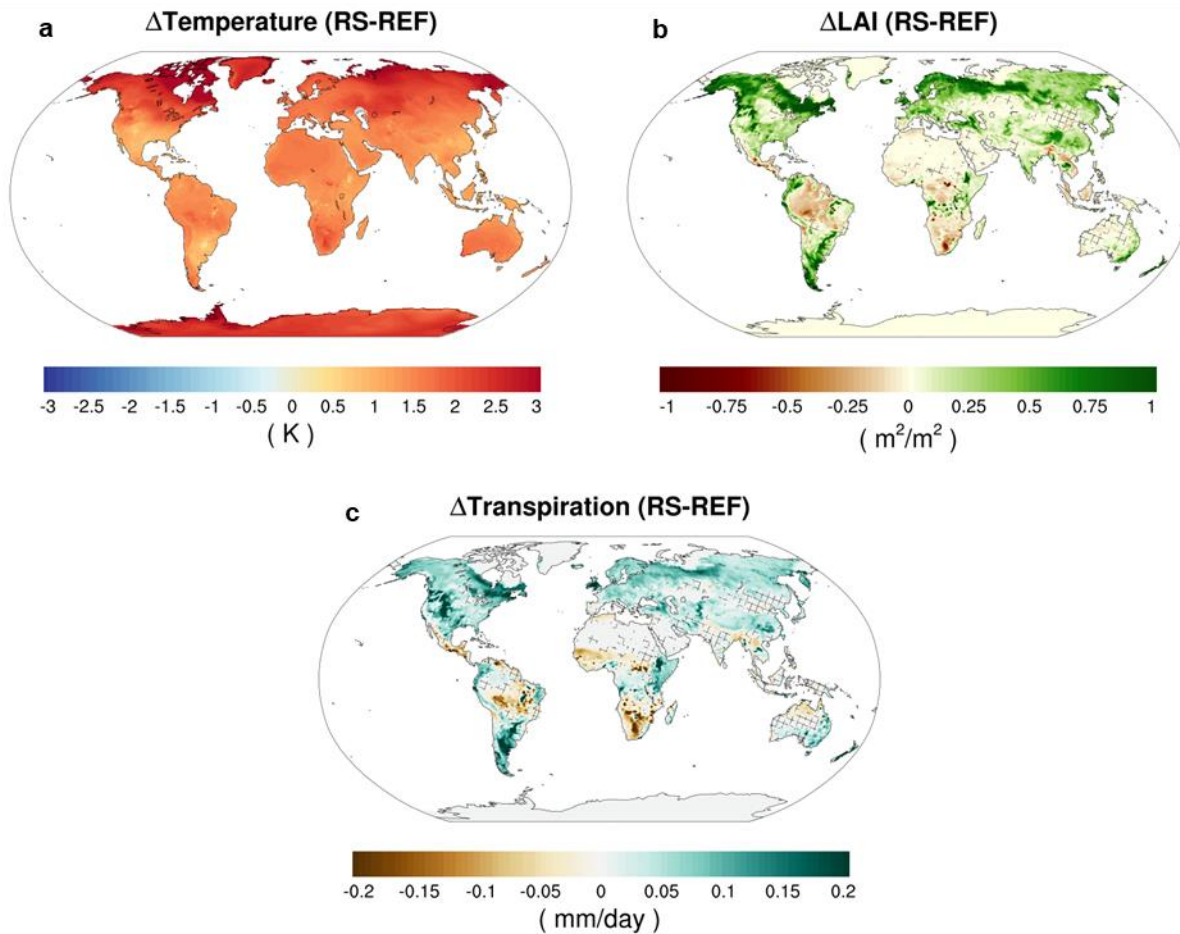
25

26

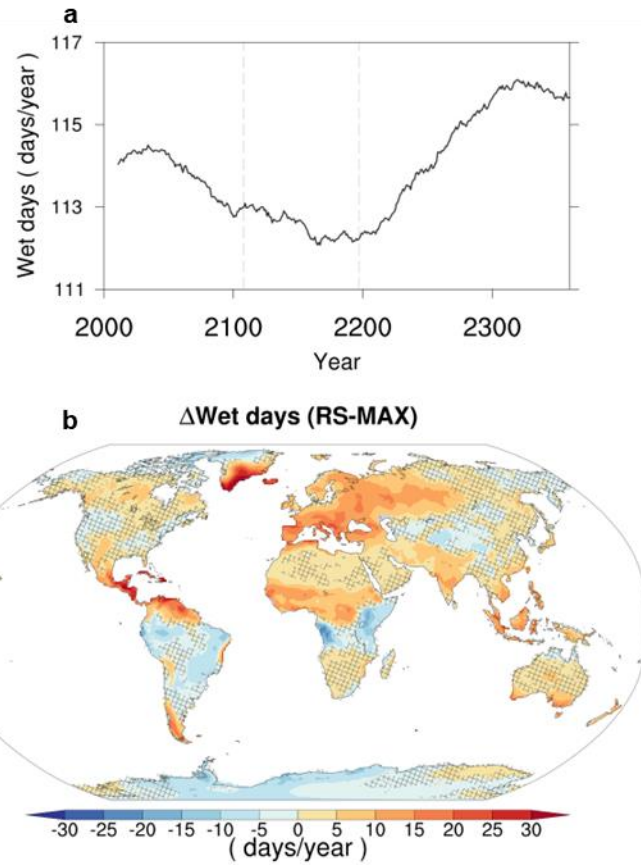
Extended Data Fig. 3 | Time evolution of LAI and stomatal conductance. Time series of global mean annual LAI (black) and stomatal conductance (green). Vertical dashed lines indicate the maximum or restored year of CO₂ concentration. All the calculations are conducted after taking the ensemble mean and the 21-year running mean.



Extended Data Fig. 4 | Changes in the precipitation. **A**, Ensemble annual mean precipitation for 2001-2031 (REF). **b,c**, Difference in ensemble mean precipitation for MAX (2091-2120) (**b**) and RS (2301-2330) (**c**) based on the REF period. Hatched areas denote statistical insignificance at the 95% confidence level. The Δ symbol indicates change.



Extended Data Fig. 5 | Changes in the temperature, LAI, and transpiration. a,b,c, Difference in ensemble mean temperature (a), LAI (b), and transpiration (c) for the RS (2301-2330) period based on the REF (2001-2030) period. Hatched areas denote statistical insignificance at the 95% confidence level. The Δ symbol indicates change.



Extended Data Fig. 6 | Changes in the wet days (daily precipitation > 1mm/day). **a**, Time series of wet days. Vertical dashed lines indicate the maximum or restored year of CO₂ concentration. All the calculations are conducted after taking the mean of three ensemble members and the 21-year running mean. **b**, Difference in wet days between RS (2301-2330) and MAX (2091-2120). Hatched areas denote statistical insignificance at the 95% confidence level. The Δ symbol indicates change.