

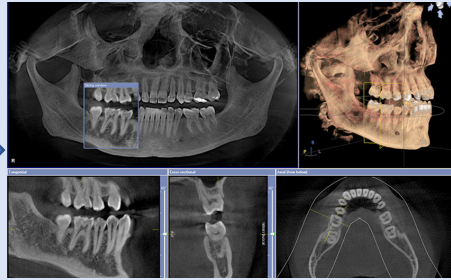
Automatic Placement Of Simulated Dental Implants Within CBCT Images In Optimum Positions: A Deep Learning Model

Problem statement

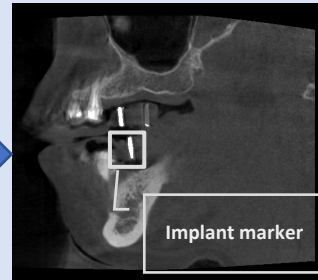
Performing the scans using a CBCT scanning machine.



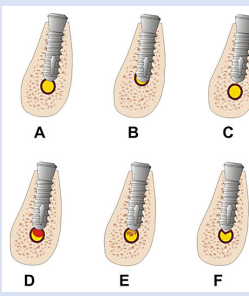
The CBCT imaging of a patient with atrophic maxilla.



Implants' markers in CBCT scan.



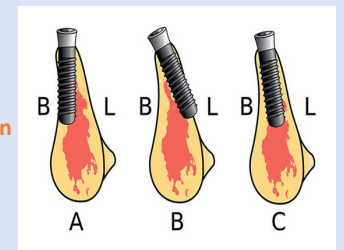
The size of implant depending on the bone size and nerve location.



Resize

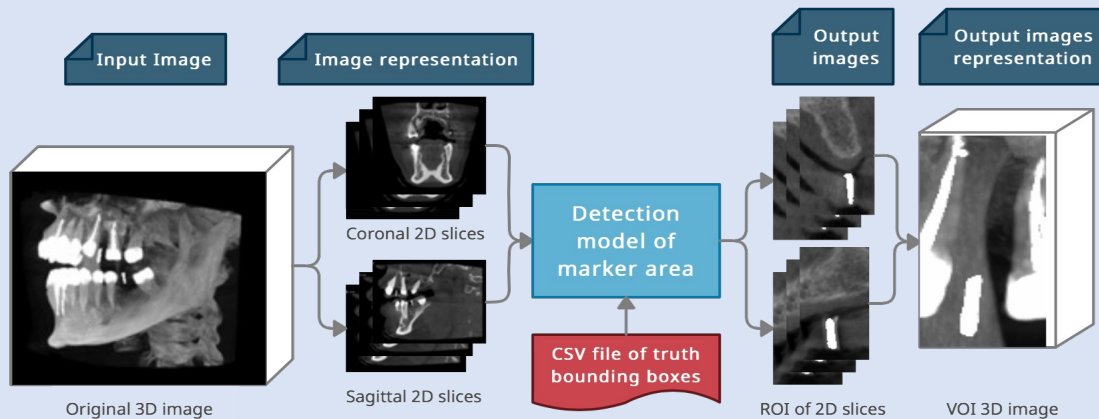


Reposition



Methodology

Markers detection phase



Implant size and position prediction phase

