

Supplementary Data

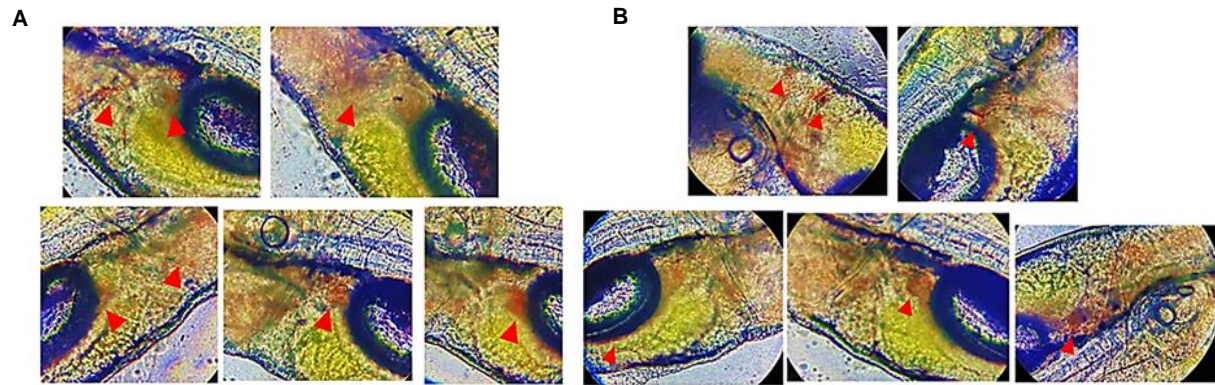


Figure S1. Representative images of 5 dpf zebrafish larvae 48 hours post piggyback knockdown of (A) *rorca* and (B) *tgifl*. Arrowhead shows microthrombi at multiple locations.

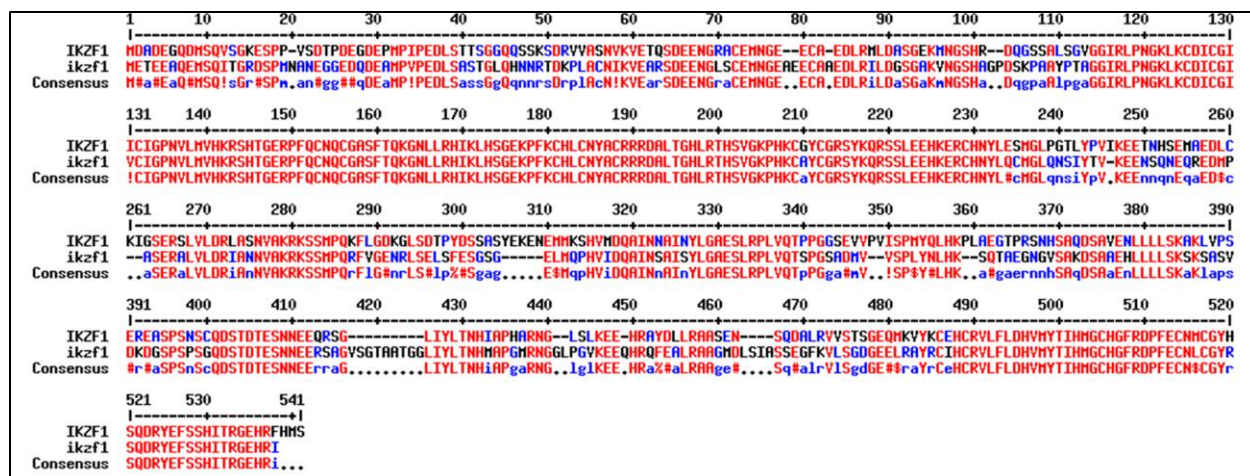


Figure S2. MultAlin comparison of the zebrafish *Ikzf1* and human *IKZF1* protein sequences.

The amino acids letters labeled in red, blue and black are high consensus (conserved), low consensus, and neutral, respectively.

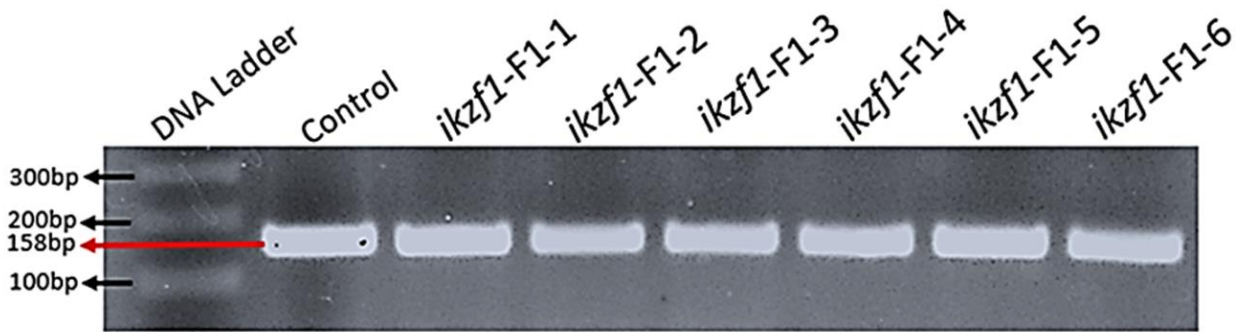


Figure S3. Agarose gel electrophoresis showing representative PCR amplified products of genomic DNA from tail clips of the adults grown from *ikzf1* mutant embryos obtained from ZIRC. The original gel is shown below.

