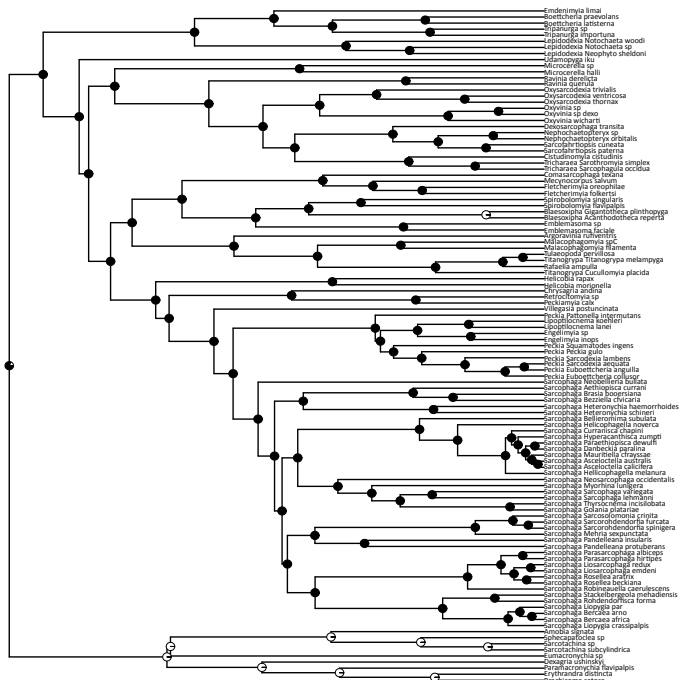


Additional file 7. Evolution of the vesica in Sarcophagidae. Ancestral character state reconstruction for vesica using maximum likelihood and the rayDISC function in the R package corHMM. Only reconstruction of the best fitting model (ER) is shown. Pie proportions represent state probabilities estimated for each internal node. Character states are indicated in insets at the bottom.



Vesica

○ absent

● present