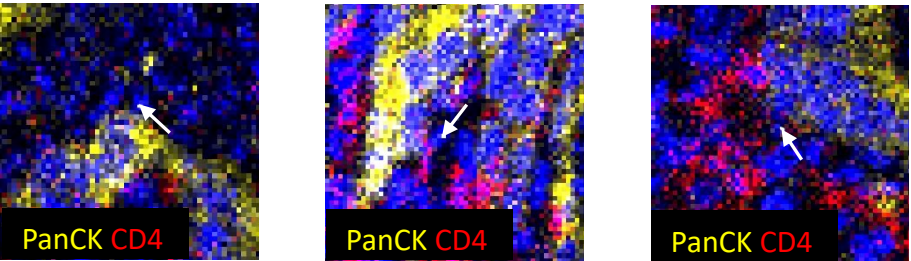
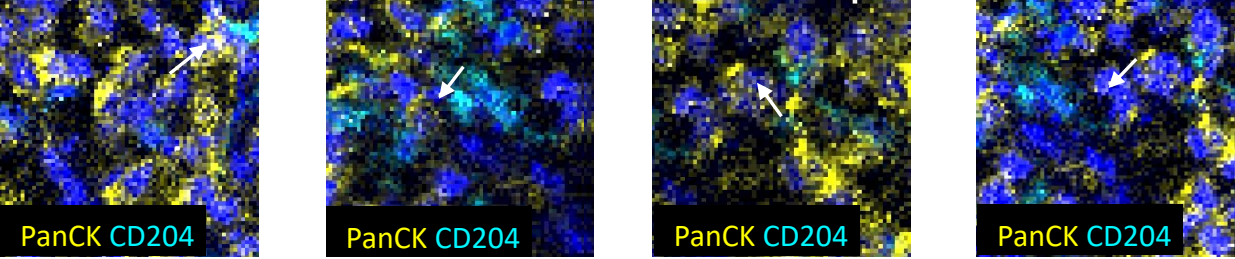


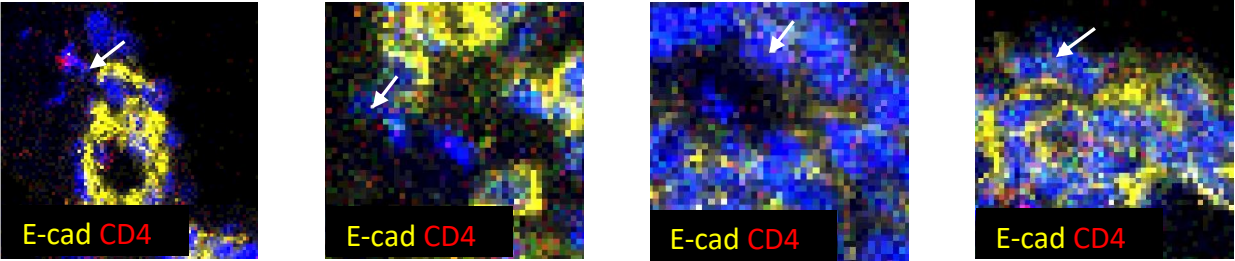
C1: marginal tumour cells



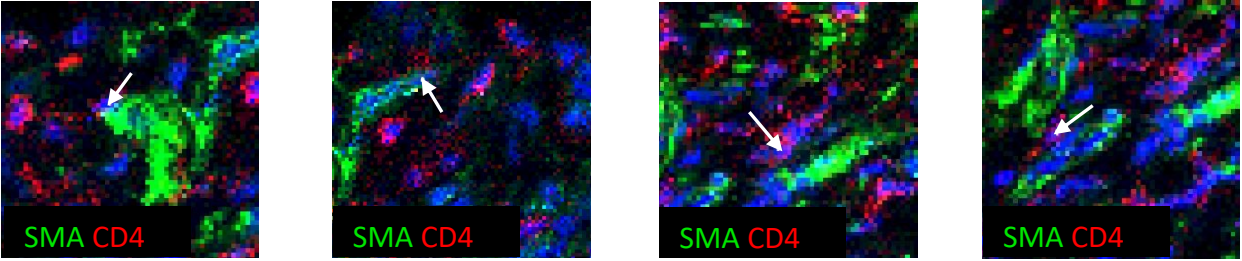
C4: tumour cells, located in direct proximity to macrophages



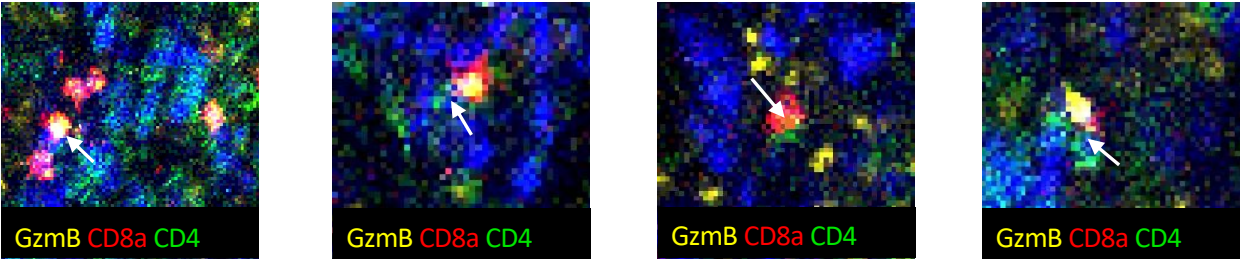
C6: marginal tumour cells



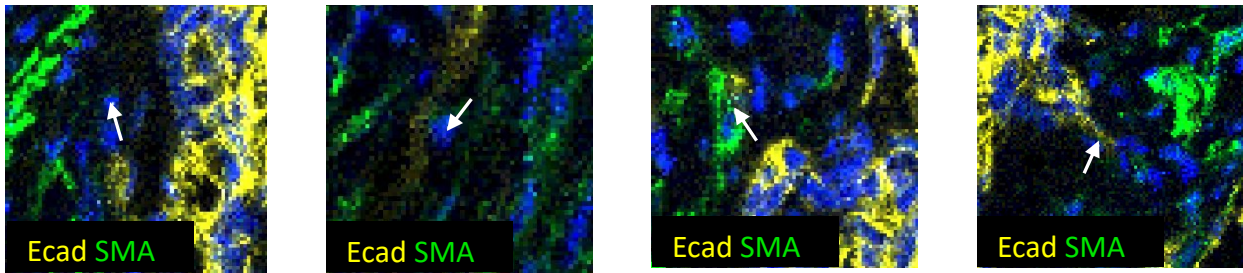
C11: CD4 and SMA cells in direct proximity to each other



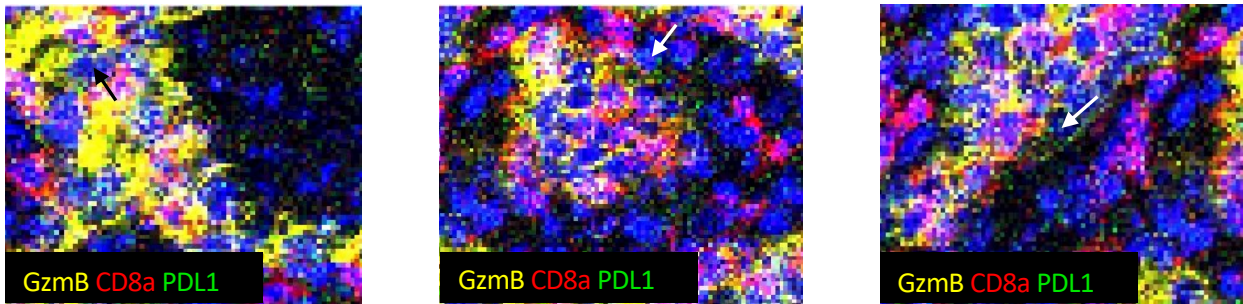
C14: CD4 and CD8 cells in direct proximity to each other



C18: tumour cells and smooth muscle cells in direct proximity to each other



C23: immune escaped tumour cells, located in proximity to CD8 cells



C24: macrophages located in direct proximity to CD4 cells

