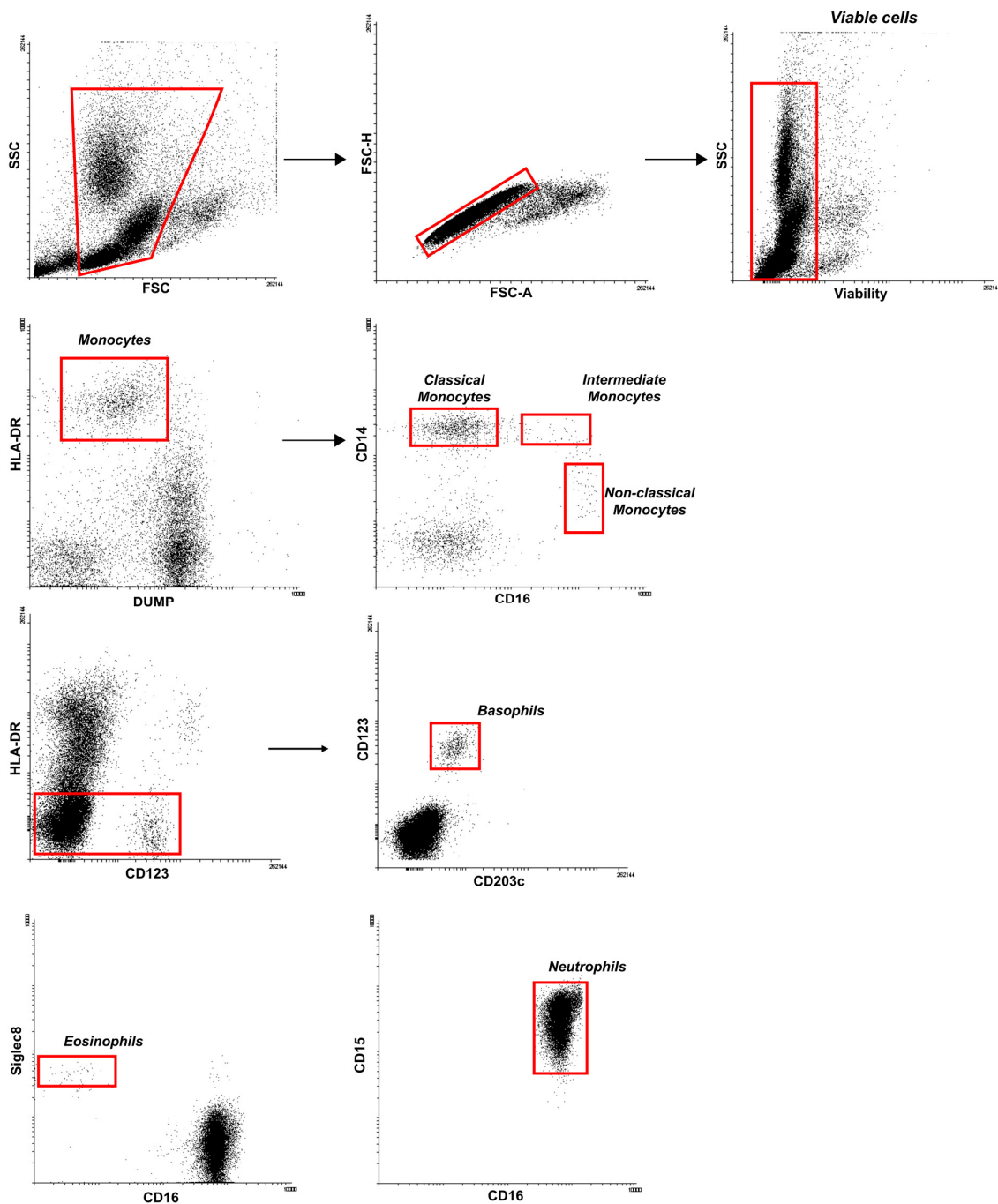
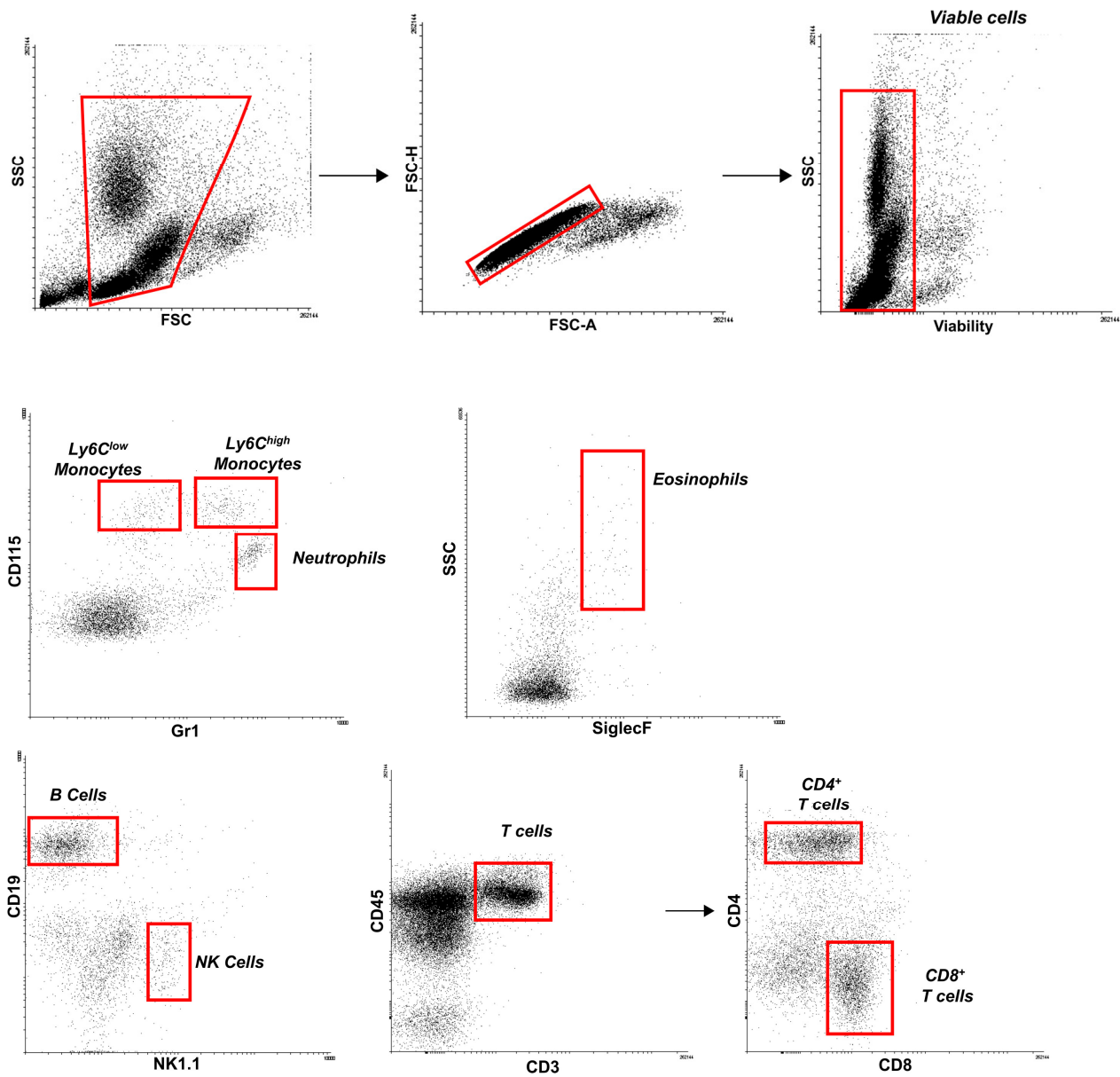


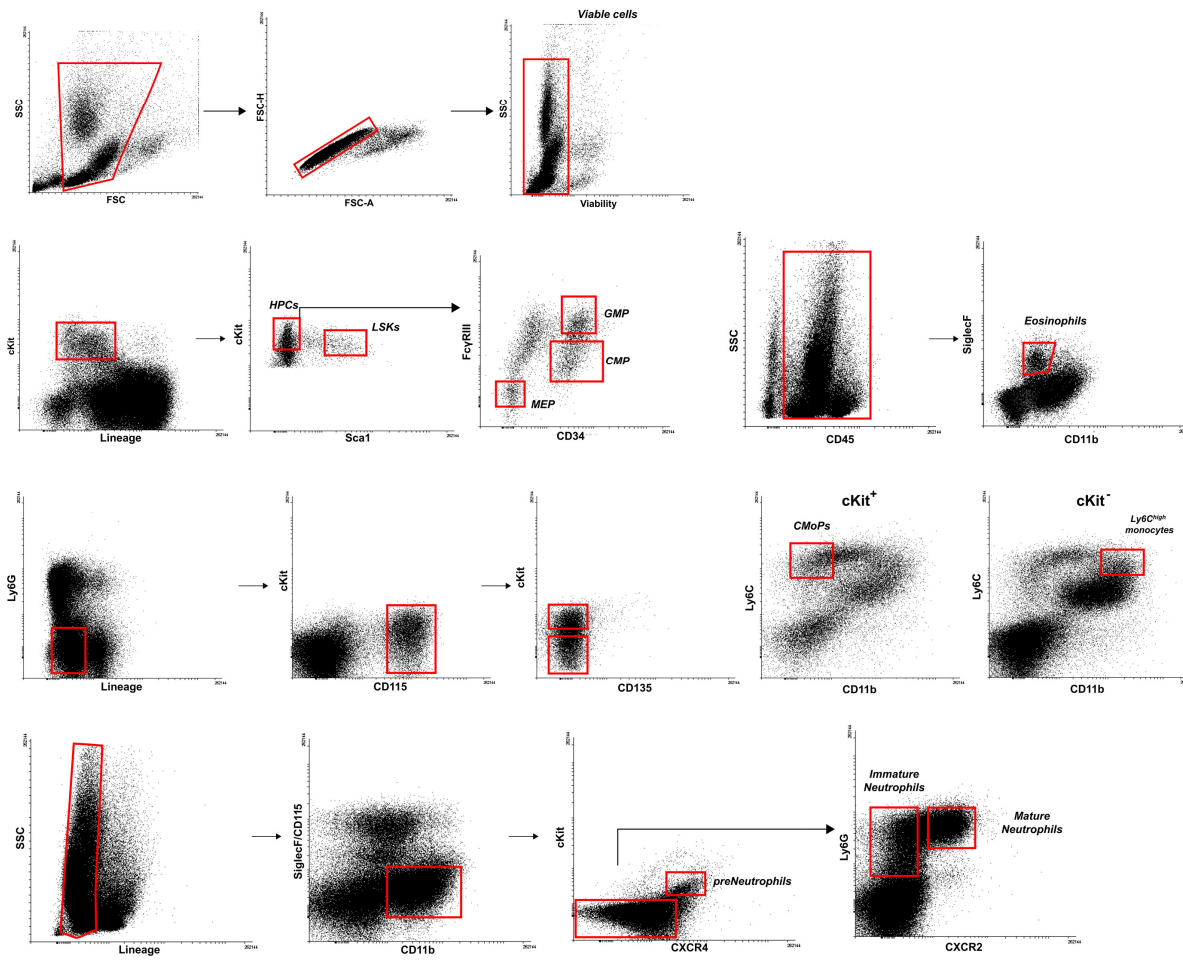
Gating strategies for the isolation of human lymphoid cells used in the lipid atlas section



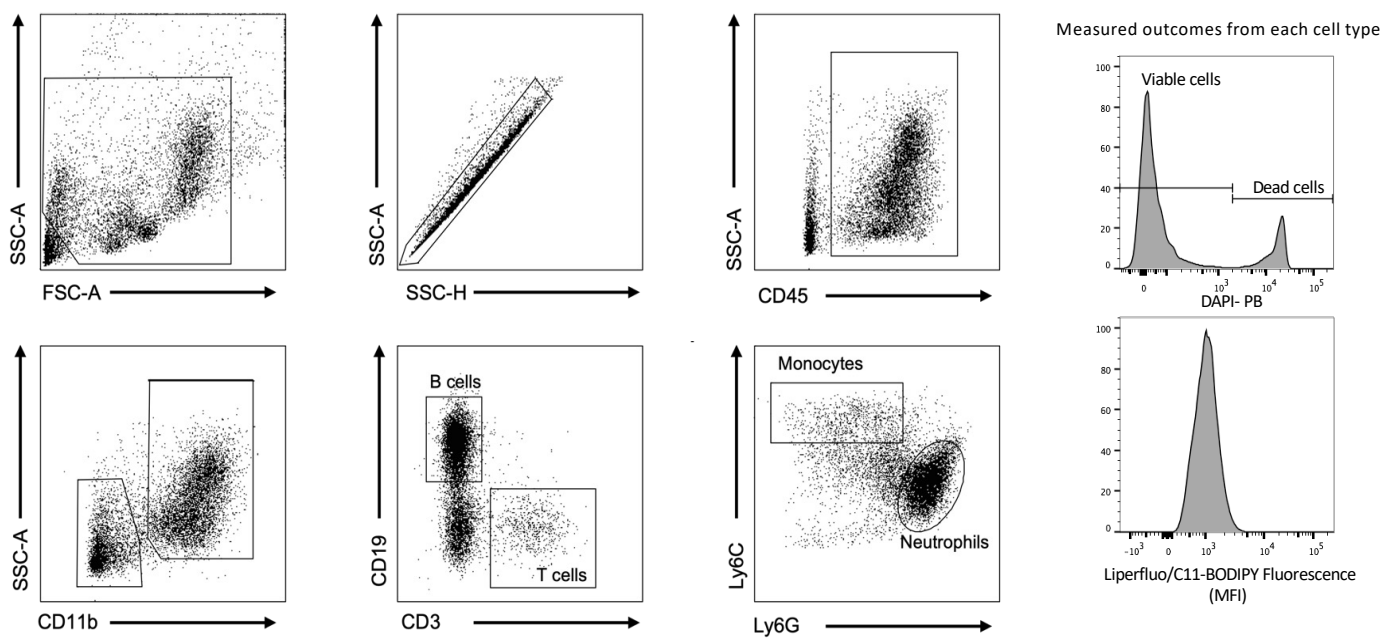
Gating strategies for the isolation of human myeloid cells used in the lipid atlas section



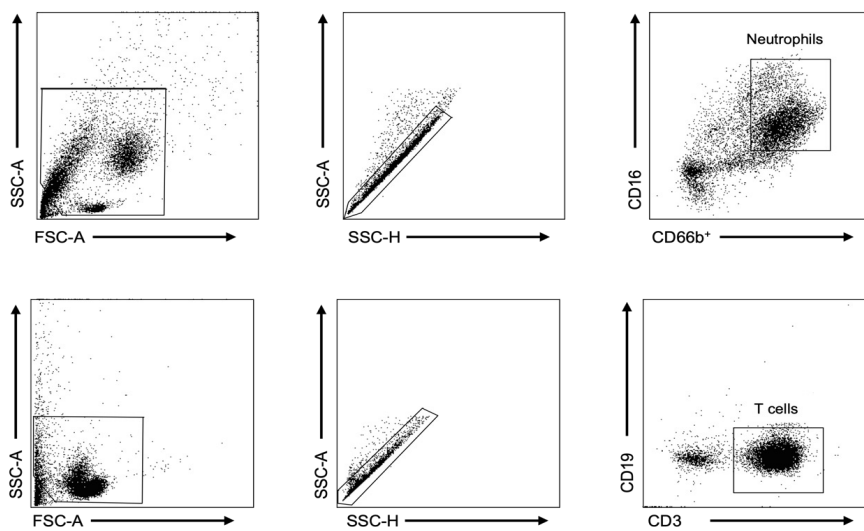
Gating strategies for the isolation of murine immune cells used in the lipid atlas section



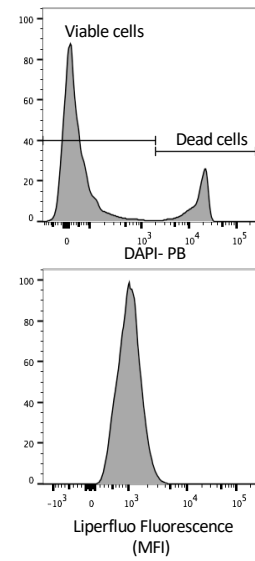
Gating strategies for the isolation of bone marrow haematopoietic cells used in the lipid atlas section



Gating strategy for human immune cells used in ferroptosis studies.



Measured outcomes from each cell type



Gating strategy for mouse immune cells used in ferroptosis studies.