

## **Supplementary Materials**

**Study on the community structure and function of symbiotic bacteria at different growth and developmental stages of *Hypsizygus marmoreus***

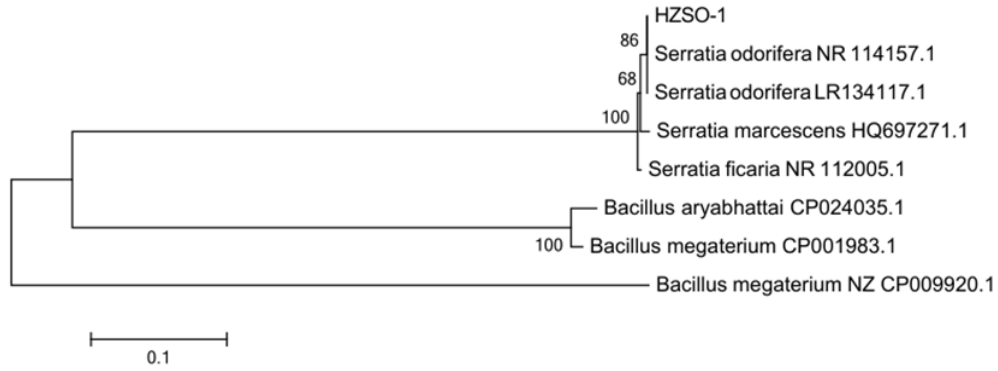
**Shujing Sun<sup>#\*</sup>, Fan Li<sup>#</sup>, Xin Xu, Yunchao Liu, Xuqiang Kong, Jianqiu Chen, Ting Liu, and Liding Chen**

*College of Life Sciences, Fujian Agriculture and Forestry University, Fuzhou 350002, People's Republic of China*

*<sup>#</sup>These authors contributed equally to this work and joint first authors.*

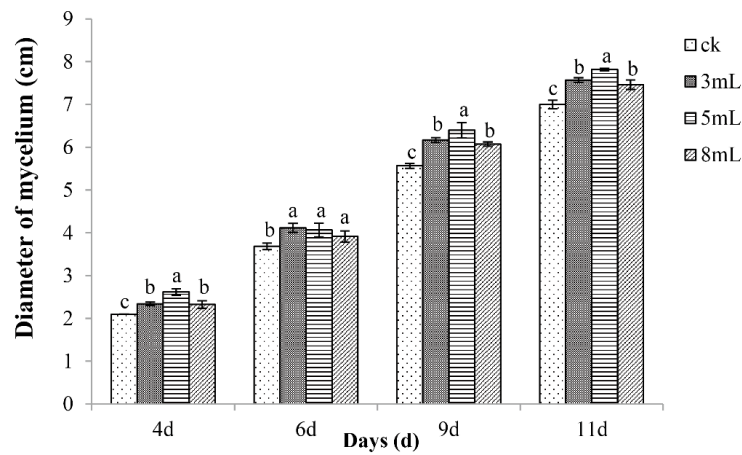
\* To whom correspondence should be addressed: College of Life Sciences, Fujian Agriculture and Forestry University, Fuzhou 350002, P. R. China. Tel.: +86-591-83789492; Fax: +86-591-83789352. E-mail address: shjsun2004@126.com

**Short title:** Mushroom symbiotic bacteria and their function



**Fig. S1** Phylogenetic tree of HZSO-1 strain based on 16S rDNA sequences

Note: The value on the branch point is the support rate. The ruler 0.1 is the evolution distance



**Fig. S2** Dosage effects of 0.22-µm filter-sterilized fermentation broth of *S. odorifera* HZSO-1 on the growth rate of *H. marmoreus* hyphae. Note: Different lowercase letters indicate a significant difference between treatments at the  $P < 0.05$  level.

**Table S1 A description of the content of each sample as shown in Figure 7**

A	B	C	D	E
Hyphae	---	Mycelia	Mycelia	Mycelia
PDA	Cultivation	Cultivation	Cultivation	Cultivation
enrichment	substrate	substrate	substrate	substrate
medium				

**Table S2 OTUs from the different samples and replicates**

Samples	HMCK	HMBH	HMBF	HMBm	HMPM
Replicates					
1	64	39	38	45	458
2	181	34	61	209	527
3	32	21	52	86	501