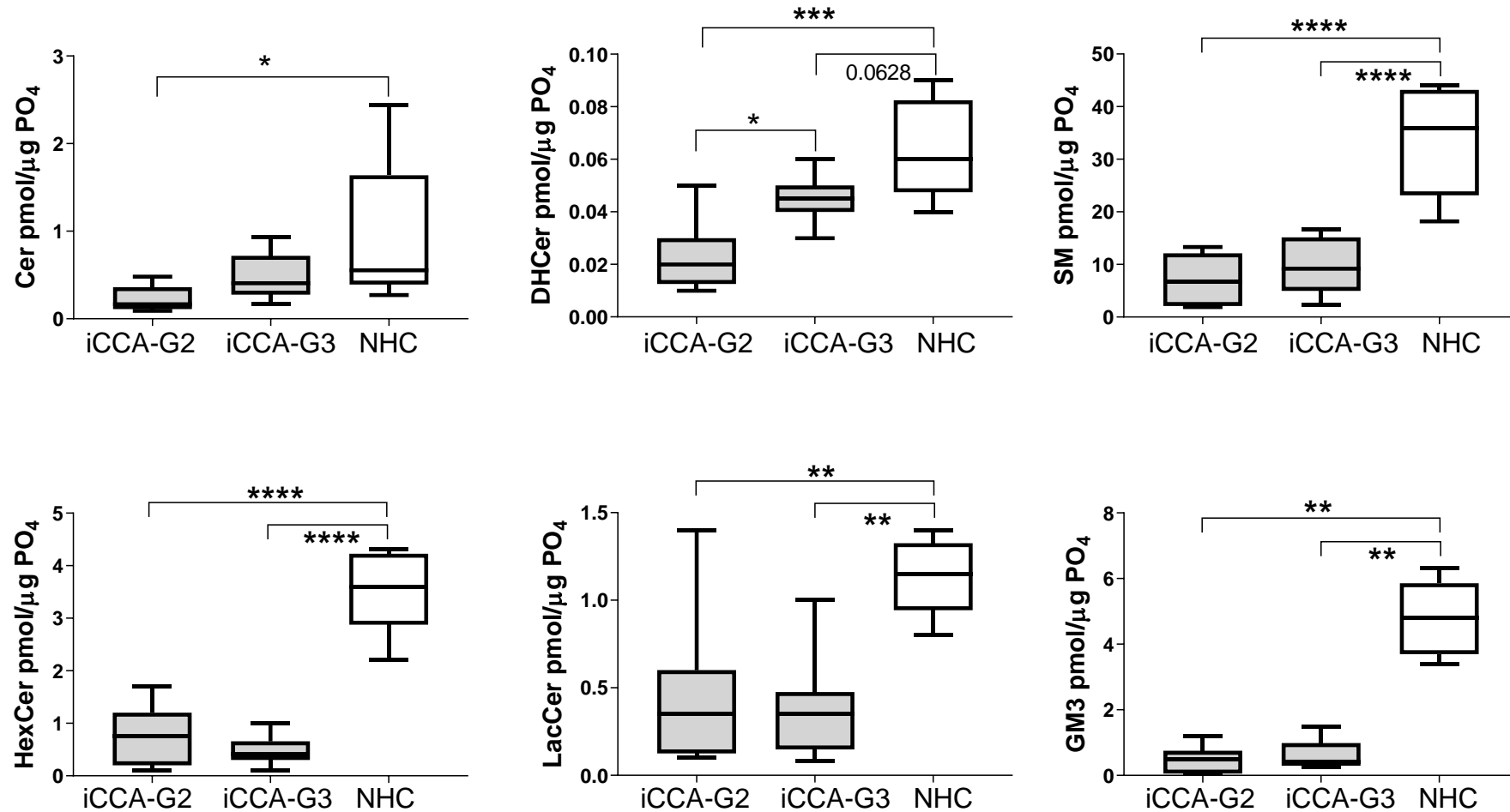
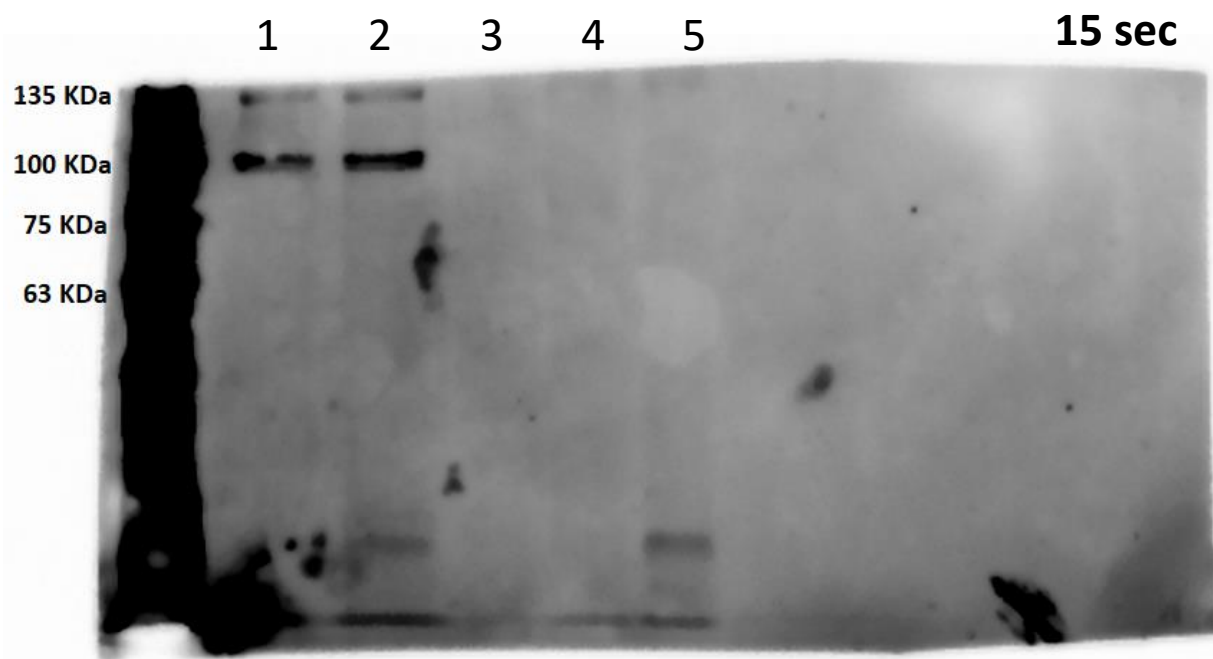
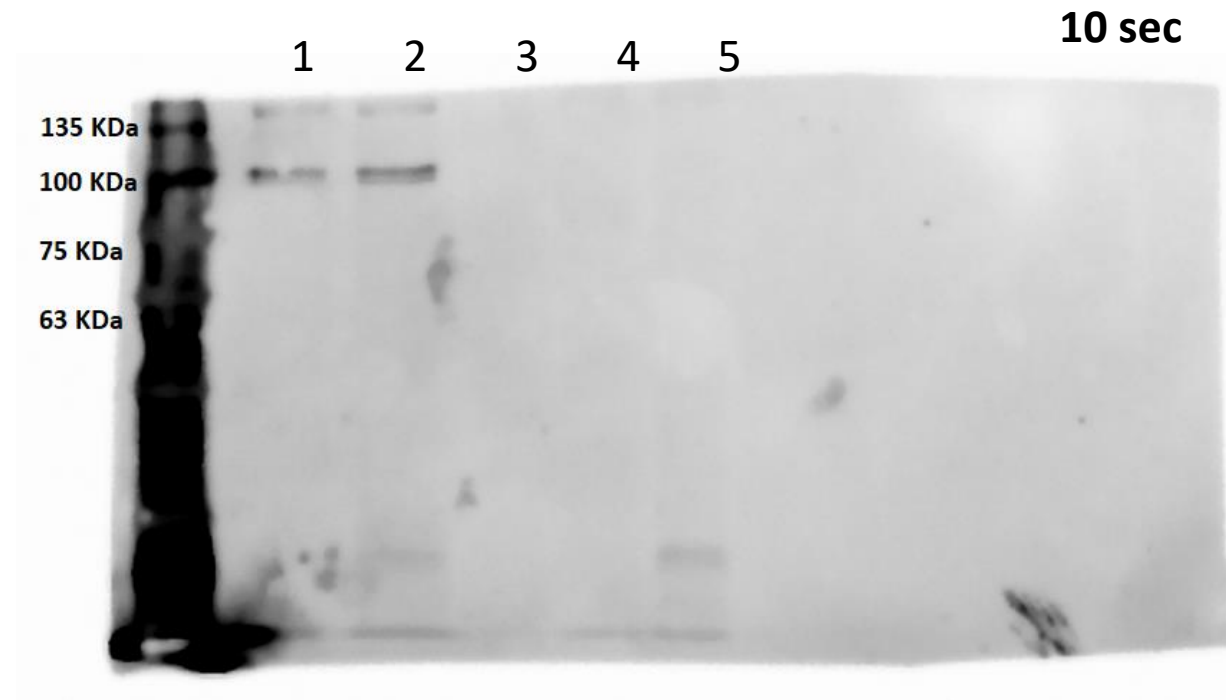
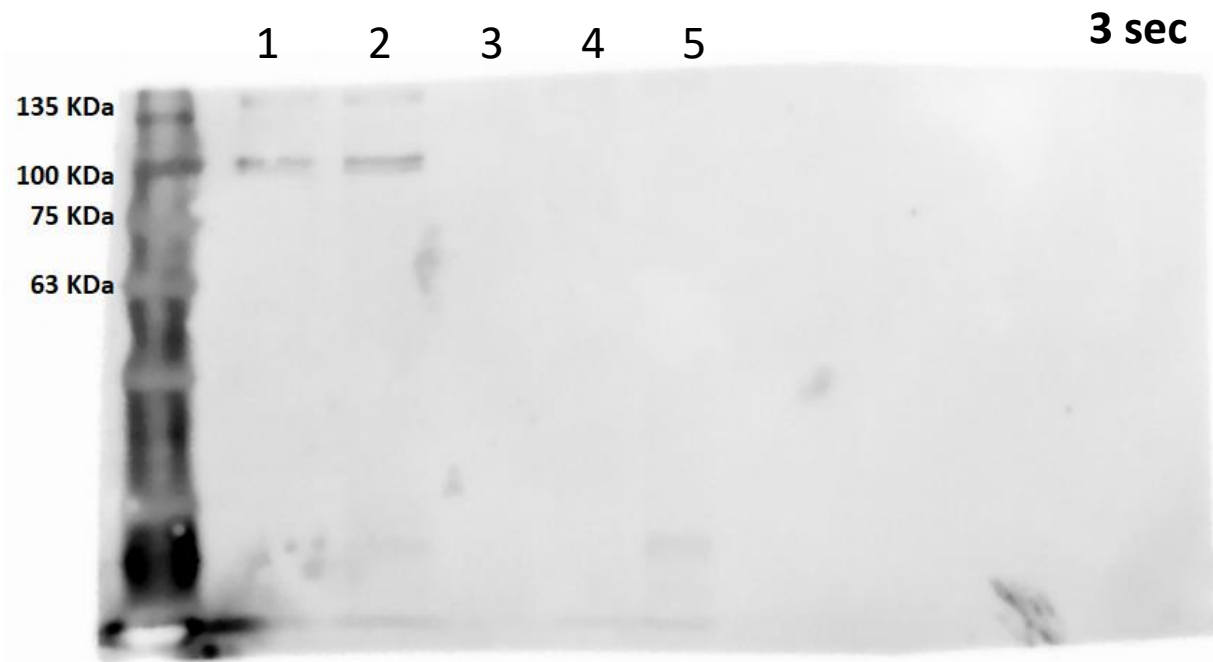


Supplementary figure 1. Cytokeratin 19 (CK19) expression on representative iCCA patients-derived cell cultures



Supplementary Figure 2. EV-SPL expression in iCCA-G2, iCCA-G3 and NHC. iCCA samples were stratified according to tumor grade. G2, moderately-differentiated tumors (n = 8); G3, poorly-differentiated tumors (n = 8). Middle bars represent median values; box plots are 25% and 75% percentiles; whiskers are minimum and maximum values.

*p <0.05, **p <0.01, ***p <0.001, ****p <0.0001. The one-way ANOVA and Tukey's multiple comparisons tests were used to compare data except for GM3 in which Dunn's multiple comparisons test was used.



Supplementary Figure 3. Original, uncropped blots shown in figure 1 at multiple exposures (3, 10 and 15 seconds). lane 1= 15 μ g protein extract from primary iCCA cell line; lane 2= 15 μ g protein extract from NHC; lane 3-4 and 5= 5 μ g protein extract from primary iCCA cell lines.