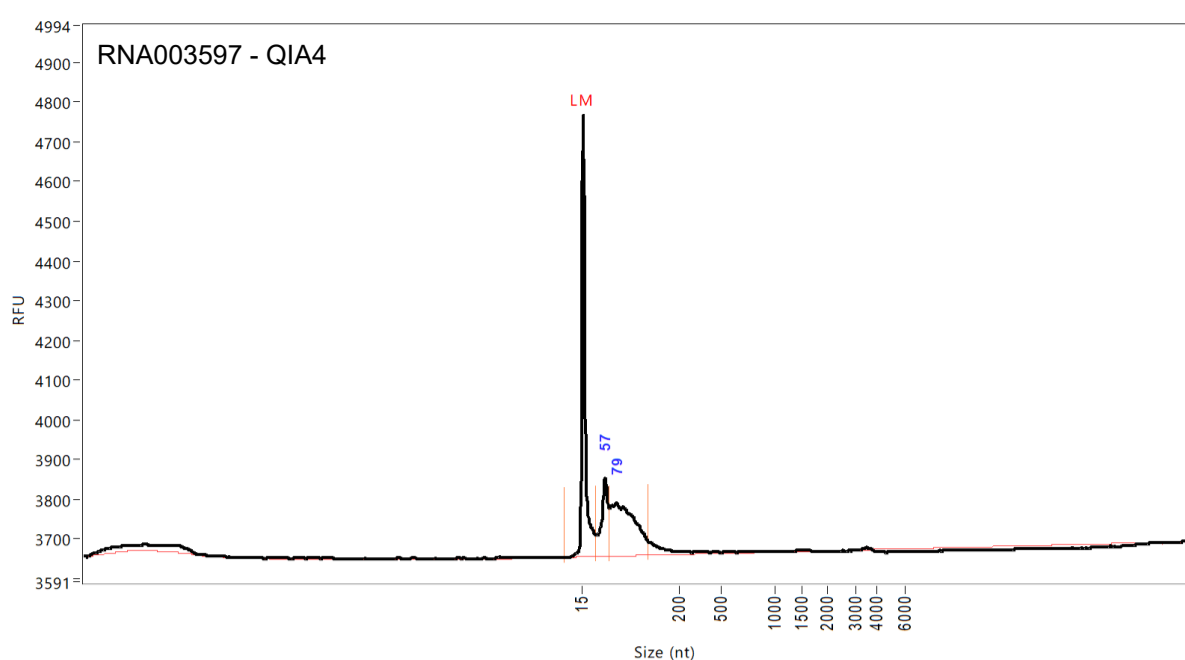
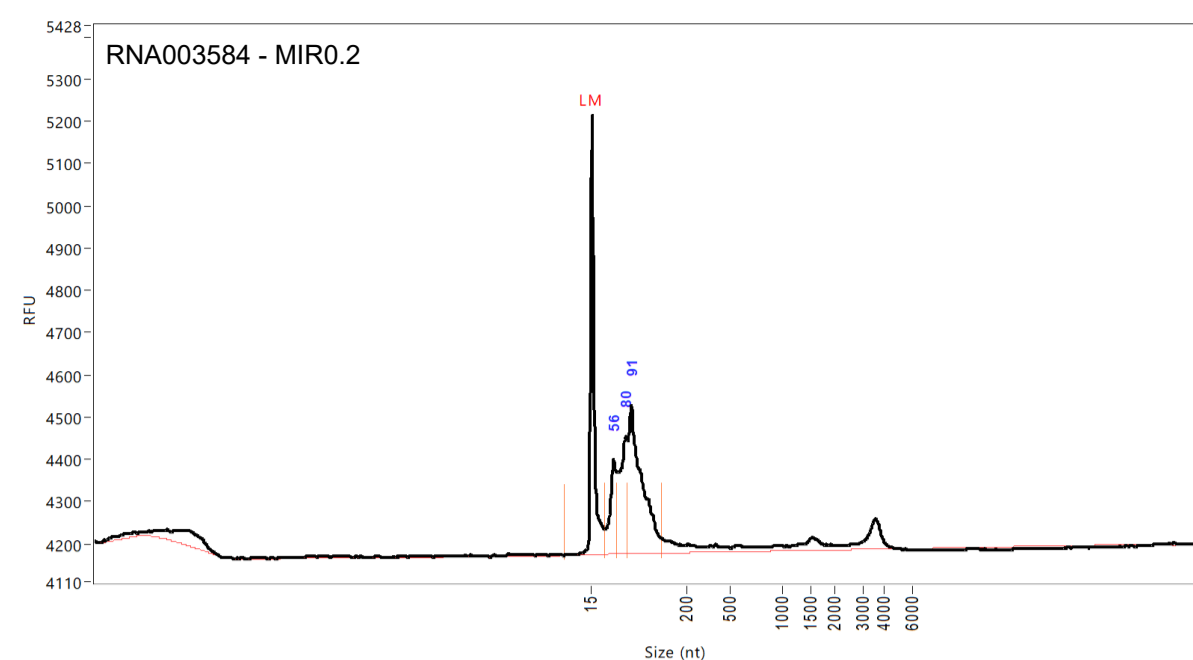


Supplementary Fig. S3.



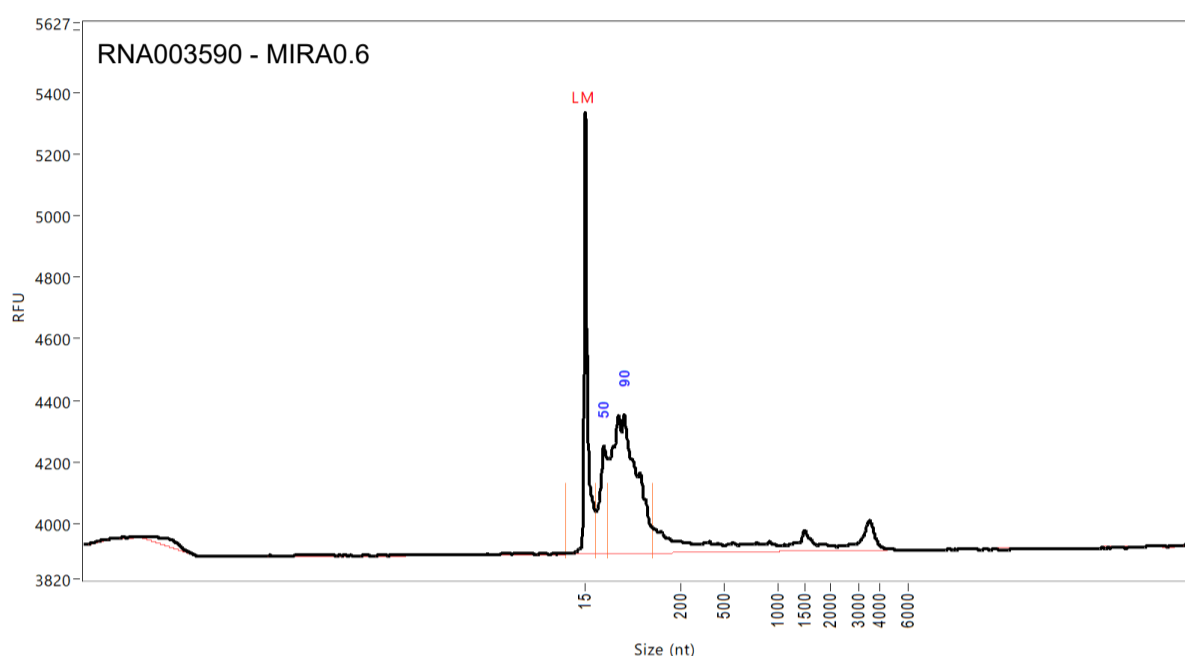
Peak	Size (nt)	Conc. (pg/uL)	From (nt)	To (nt)	RFU
1	15 (LM)	6.2267	0	40	1113
2	57	20.7608	40	66	195
3	79	50.1091	66	142	132

TIC:	70.8698	pg/uL
TIM:	2787.4565	pmole/L
Total Conc.:	77.1040	pg/uL
28S/18S:	0.0	
RQN	1.2	



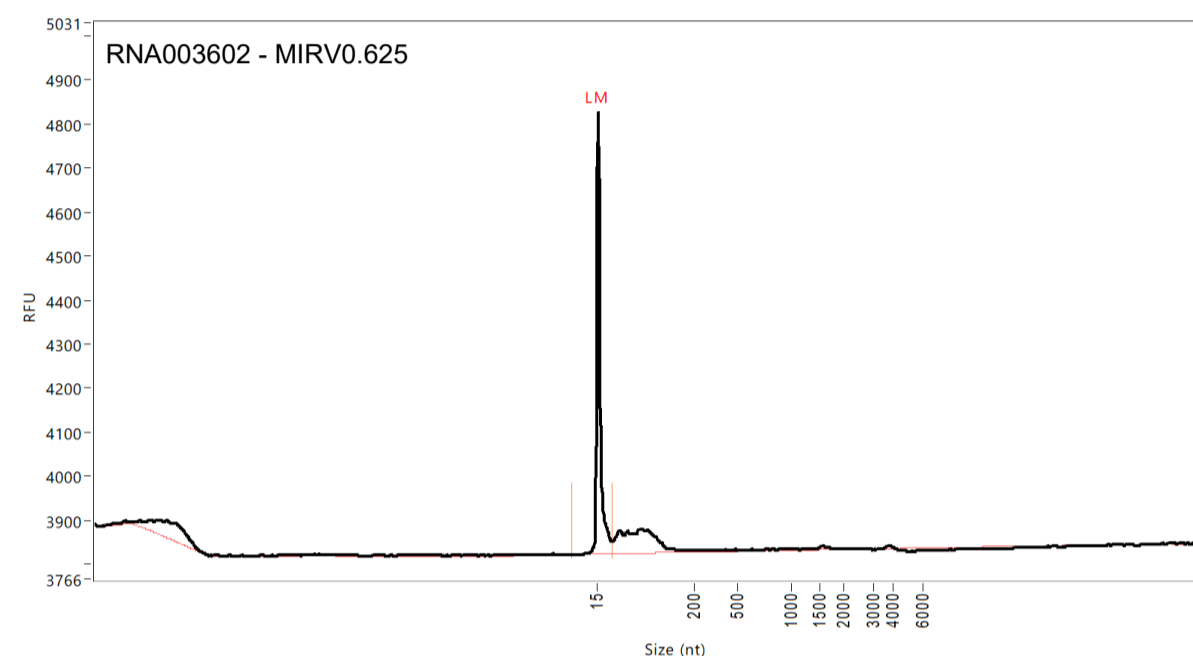
Peak	Size (nt)	Conc. (pg/uL)	From (nt)	To (nt)	RFU
1	15 (LM)	6.2267	0	40	1040
2	56	23.9809	40	63	222
3	80	34.2518	63	84	277
4	91	73.7274	84	150	351

TIC:	131.9601	pg/uL
TIM:	4967.6406	pmole/L
Total Conc.:	164.9395	pg/uL
28S/18S:	0.0	
RQN	3.2	



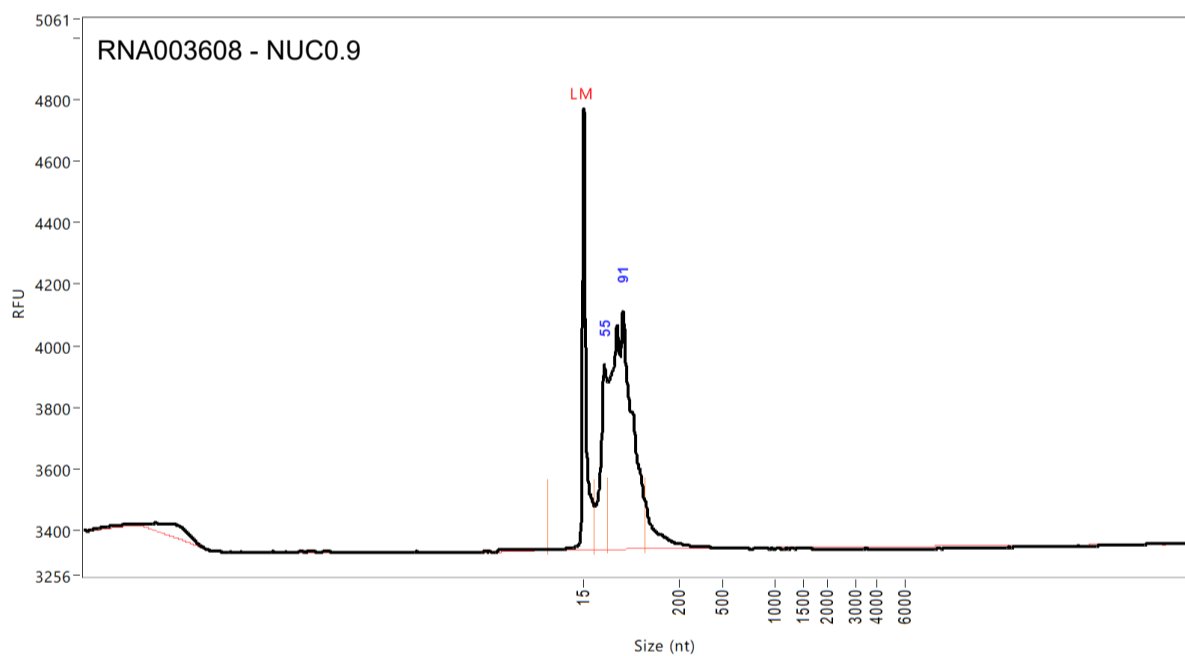
Peak	Size (nt)	Conc. (pg/uL)	From (nt)	To (nt)	RFU
1	15 (LM)	6.2267	0	35	1434
2	50	32.7797	35	60	348
3	90	123.2868	60	145	448

TIC:	156.0664	pg/uL
TIM:	6137.1094	pmole/L
Total Conc.:	205.0533	pg/uL
28S/18S:	0.0	
RQN	2.4	



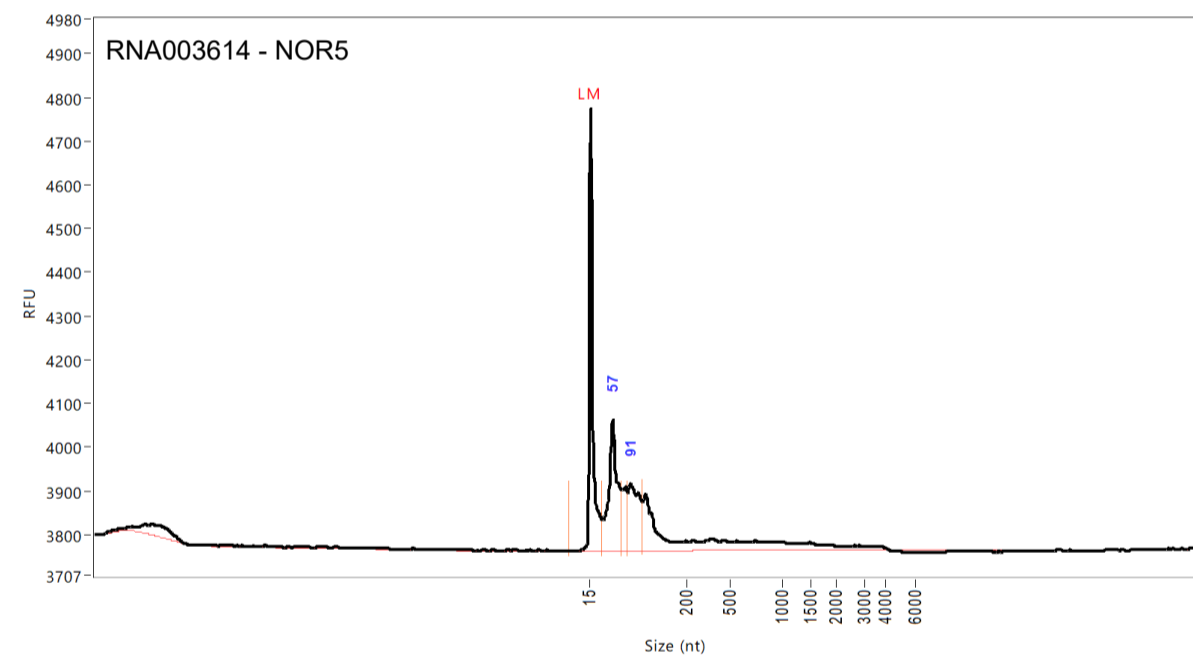
Peak	Size (nt)	Conc. (pg/uL)	From (nt)	To (nt)	RFU
1	15 (LM)	6.2267	0	42	1003

TIC:	0.0000	pg/uL
TIM:	0.0000	pmole/L
Total Conc.:	32.1047	pg/uL
28S/18S:	0.0	
RQN	10.0	



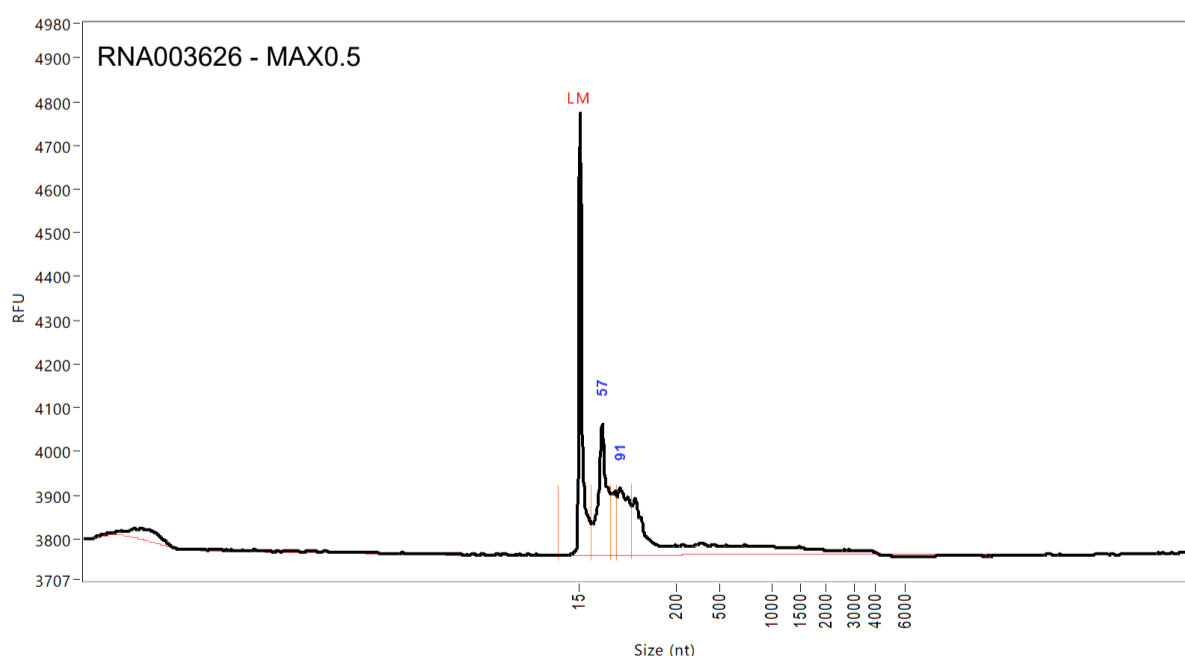
Peak	Size (nt)	Conc. (pg/uL)	From (nt)	To (nt)	RFU
1	15 (LM)	6.2267	0	37	1431
2	55	45.9980	37	62	596
3	91	173.9776	62	134	769

TIC:	219.9756	pg/uL
TIM:	8666.7471	pmole/L
Total Conc.:	233.0036	pg/uL
28S/18S:	0.0	
RQN	1.0	



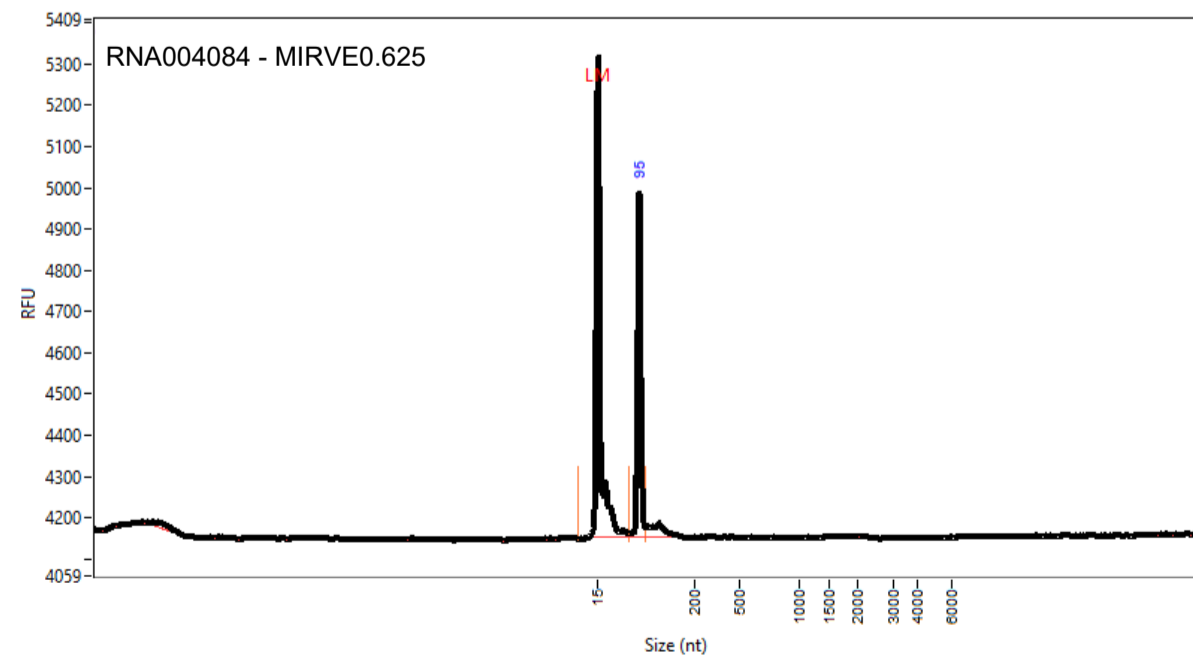
Peak	Size (nt)	Conc. (pg/uL)	From (nt)	To (nt)	RFU
1	15 (LM)	8.3737	0	38	1011
2	57	62.2613	38	75	297
3	91	37.7524	87	114	151

TIC:	100.0137	pg/uL
TIM:	4493.0649	pmole/L
Total Conc.:	193.0621	pg/uL
28S/18S:	0.0	
RQN	1.5	



Peak	Size (nt)	Conc. (pg/uL)	From (nt)	To (nt)	RFU
1	15 (LM)	8.3737	0	38	1011
2	57	62.2613	38	75	297
3	91	37.7524	87	114	151

TIC:	100.0137	pg/uL
TIM:	4493.0649	pmole/L
Total Conc.:	193.0621	pg/uL
28S/18S:	0.0	
RQN	1.5	



Peak	Size (nt)	Conc. (pg/uL)	From (nt)	To (nt)	RFU
1	15 (LM)	4.7	0	73	1163
2	95	25.7	73	107	832

TIC:	25.7	pg/uL
TIM:	847.6	pmole/L
Total Conc.:	29.6	pg/uL
28S/18S:	0.0	
RQN	1.0	

Supplementary Fig. S3: Extracellular RNA is highly fragmented. For each RNA purification method, Femto Pulse results are shown for one of the triplicate RNA purifications using the maximum plasma input volume. Measurements are on DNase-treated samples (using 2 μ l sample), except for MIRVE0.625 (RNA004084, 2 μ l RNA eluate). The number in the RNA purification method labels is the plasma input volume (in ml). MAX: Maxwell method; MIR: miRNeasy method; MIRA: miRNeasy Advanced method; MIRV: mirVana method; MIRVE: mirVana method with purification protocol for RNA enriched for small RNAs; NOR: Norgen method; NUC: NucleoSpin method; QIA: QIAamp method.