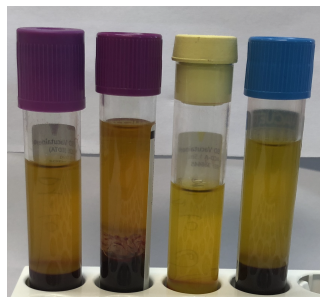


# Supplementary Fig. S8.

a



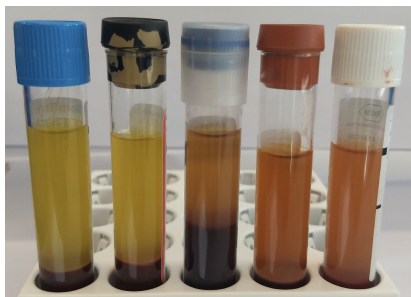
EDTA

EDTA separator

ACD-A

Citrate

b



Biomatrixa

DNA Streck

PAXgene

RNA Streck

Roche

**Supplementary Fig. S8: Example of hemolysis in *preservation* tubes.** Visual inspection of classic plasma tubes (a) of donor 7 (Supplementary Fig. S6a and Supplementary Fig. S7a) and of *preservation* plasma tubes (b) of donor 5 (Supplementary Fig. S6a and Supplementary Fig. S7a) at time interval T0. For donor 5, plasma from the *PAXgene*, *RNA Streck* and *Roche* tube showed to be hemolytic, which is in line with the NanoDrop measurements (Supplementary Fig. S6a and Supplementary Fig. S7a).