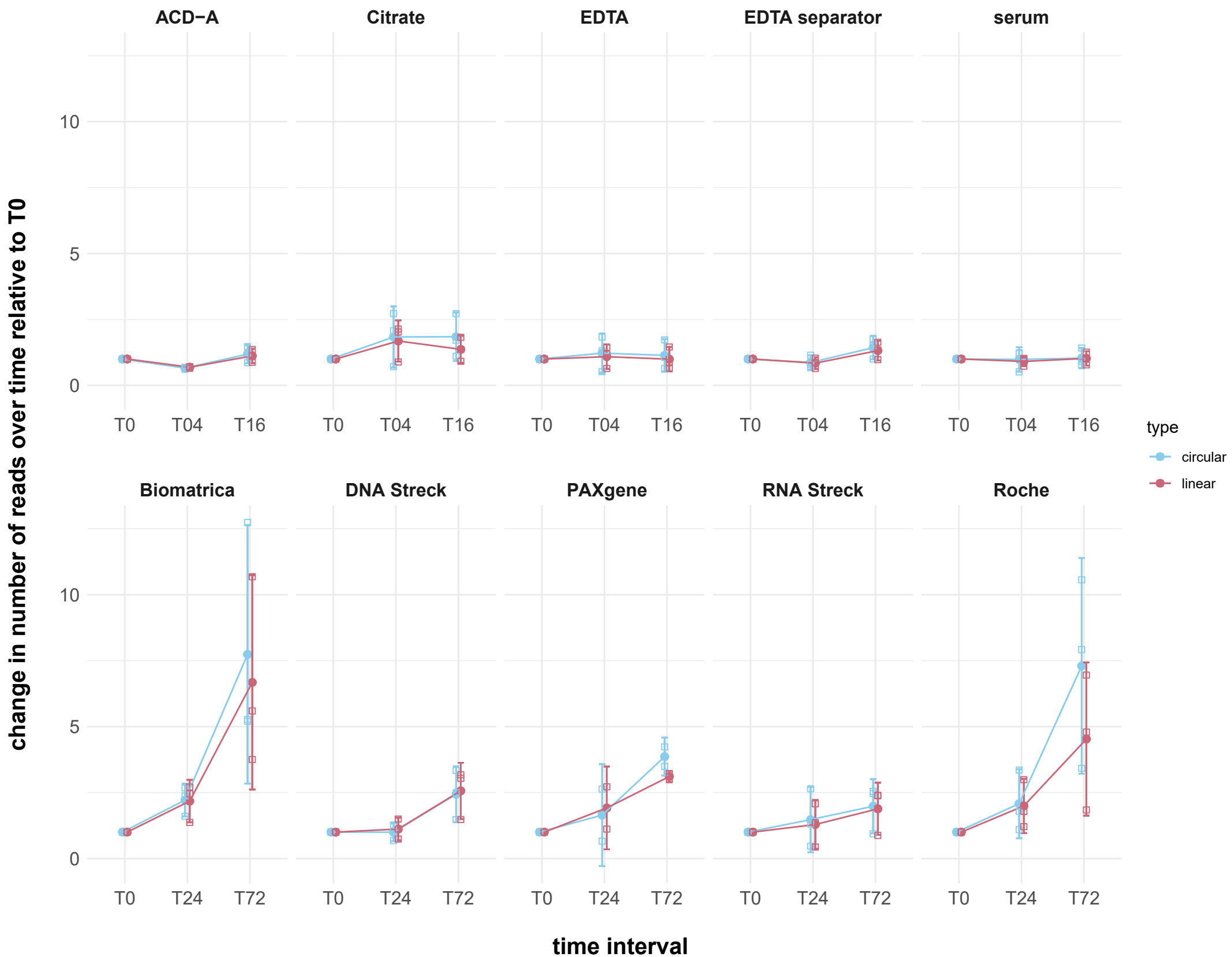


Supplementary Fig. S11.



Supplementary Fig. S11: Total number of circular and linear reads relative to T0. Each white dot with colored outline represents the number of reads relative to the same donor's T0 tube. The fully colored dots represent the average relative number of reads and 95% confidence intervals are shown. Each plot represents a different tube type. The relative number of linear and circular reads are calculated by multiplying the fraction of the endogenous RNA reads and the Sequin spikes by the fraction of linear or circRNA reads, respectively. Small changes indicate good performance. T0=plasma prepared immediately after blood draw. T04, T16, T24, T72=plasma prepared 4, 16, 24 and 72 hours after blood draw, respectively. Note that different donors were sampled and that tubes were processed at different time intervals for *preservation* and classic tubes.