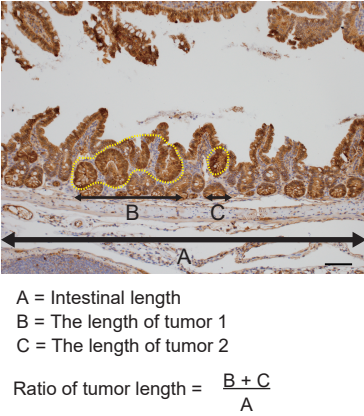
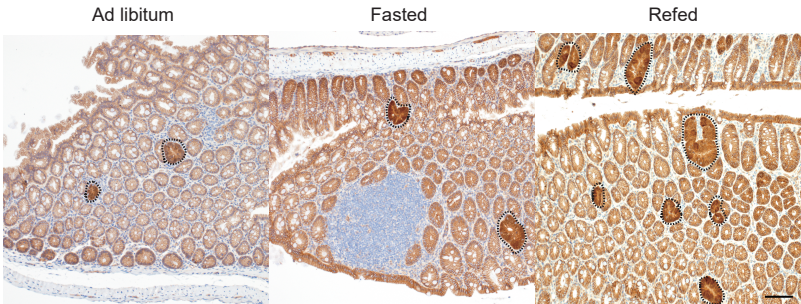
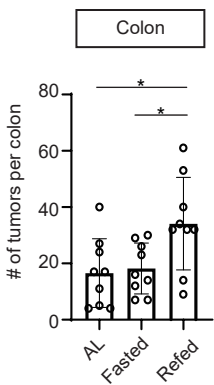


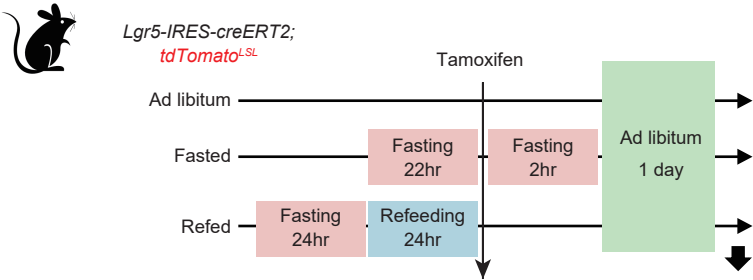
a



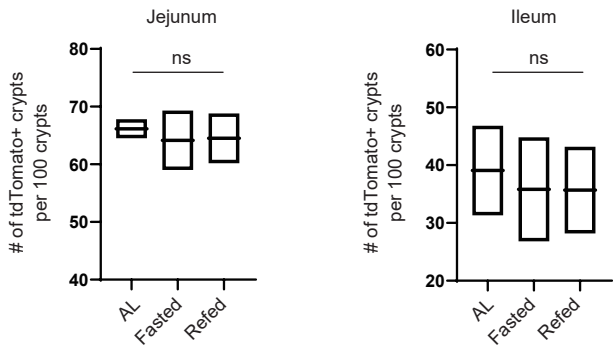
b



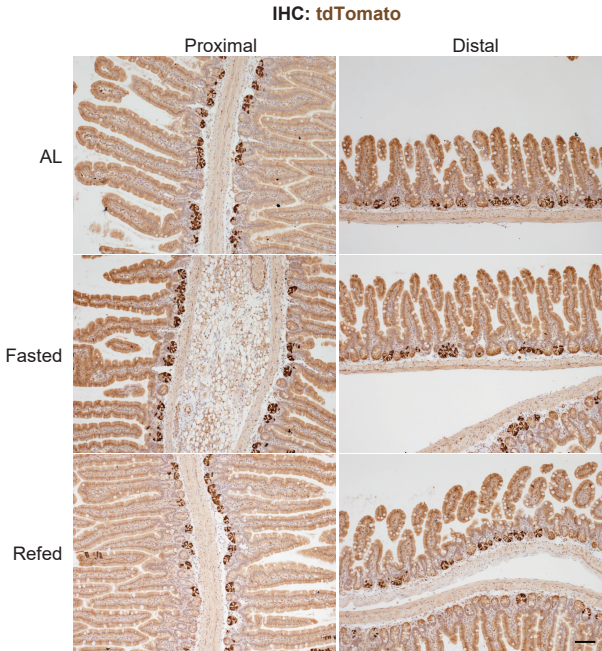
c



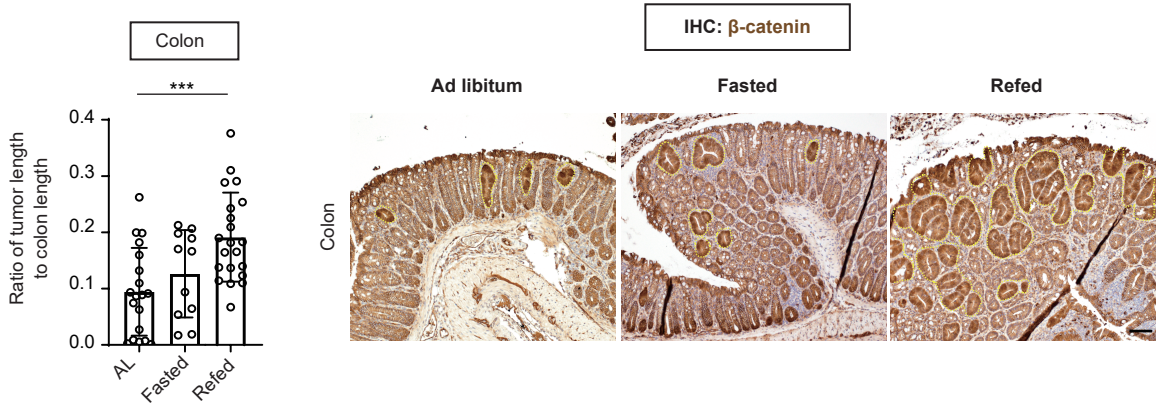
d



e



f



Extended Data Fig. 5 Post-fast refeeding augments the tumourigenicity in colon

- (a) Schematic of the tumour measurement, Scale bar, 50 μm .
- (b) The number of β -catenin⁺ *Apc*-null tumours in colon from *Apc*^{loxp/loxp}; *Lgr5-EGFP-IRES-creERT2* mice (left), and representative *Apc*-null tumour lesion by IHC for β -catenin (black dot circle, right). Scale bar, 50 μm .
- (c) Schematic of *Cre* recombinase activity with *Lgr5-IRES-CreERT2*; *Rosa26*^{LSL-tdTomato} reporter mice.
- (d) Quantification of the number of tdTomato⁺ crypts the from jejunum (left) and ileum (right) samples. n=3.
- (e) Representative images of tdTomato⁺ crypt from jejunum (left) and ileum (right) . Scale bar, 50 μm .
- (f) Ratio of β -catenin⁺ *Apc*-null tumour length in colon of *Apc*^{loxp/loxp}; *Villin-creERT2* mice (left), and representative *Apc*-null tumours by IHC for β -catenin. Tumours are surrounded by a yellow dotted line (right). Scale bar, 50 μm .

Data in dot plots were expressed as mean \pm SD. * $p < 0.05$, *** $p < 0.001$, NS; not significant, one-way ANOVA