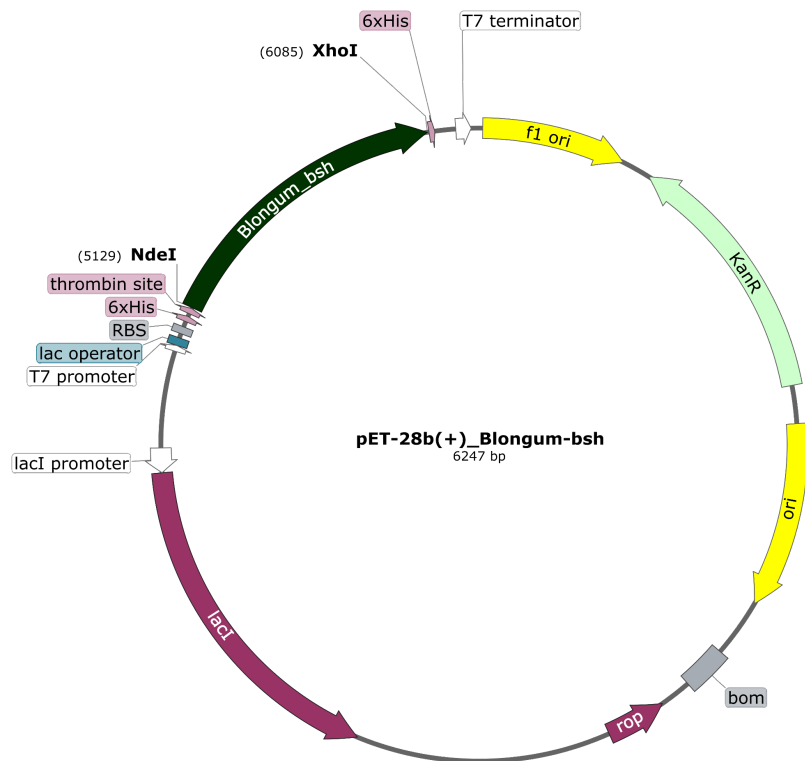
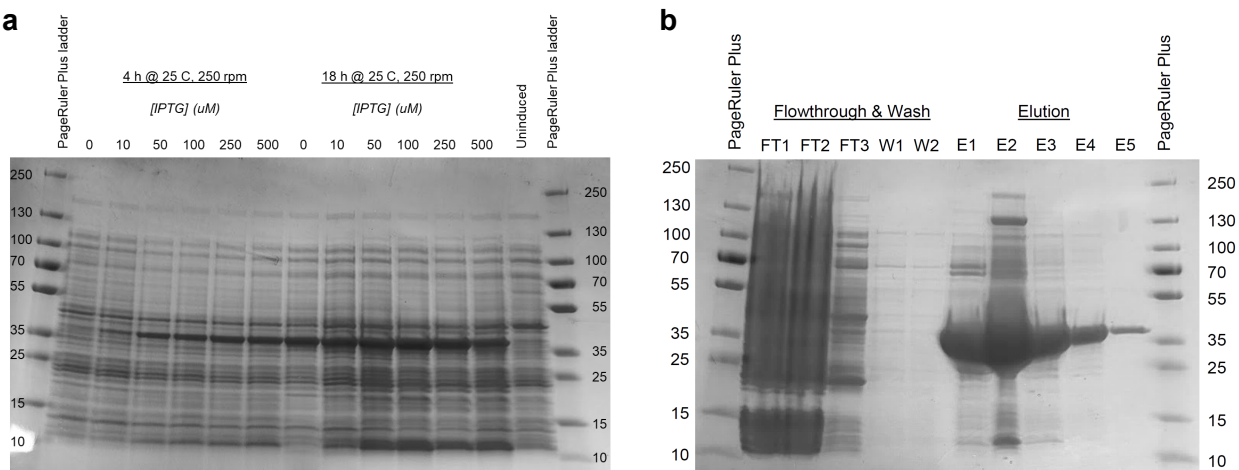


Supplemental Figures:



Supplemental Figure S1. Plasmid map of pET-28b(+)-BIBSH codon-optimized for *E. coli*.



Supplemental Figure S2. Protein expression and purification of *Bifidobacterium longum* BSH in *E. coli* BL21(DE3). (a) SDS-PAGE of soluble protein fraction extracted from *E. coli* BL21(DE3) transformed with pET-28b(+)-BIBSH. (b) SDS-PAGE of total protein collected from stages throughout His-purification of *E. coli* pET-28b(+)-BIBSH extract.