

# Supporting Information for: Carbone et al., How Will Climate-Induced Migration Affect the Future Distribution of Population in the US?

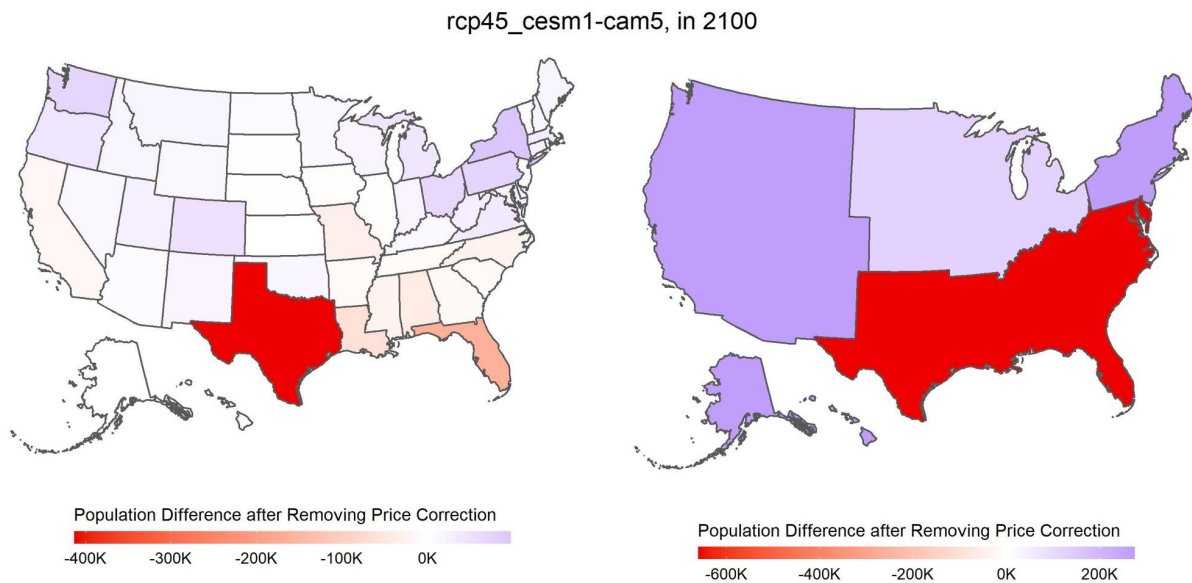
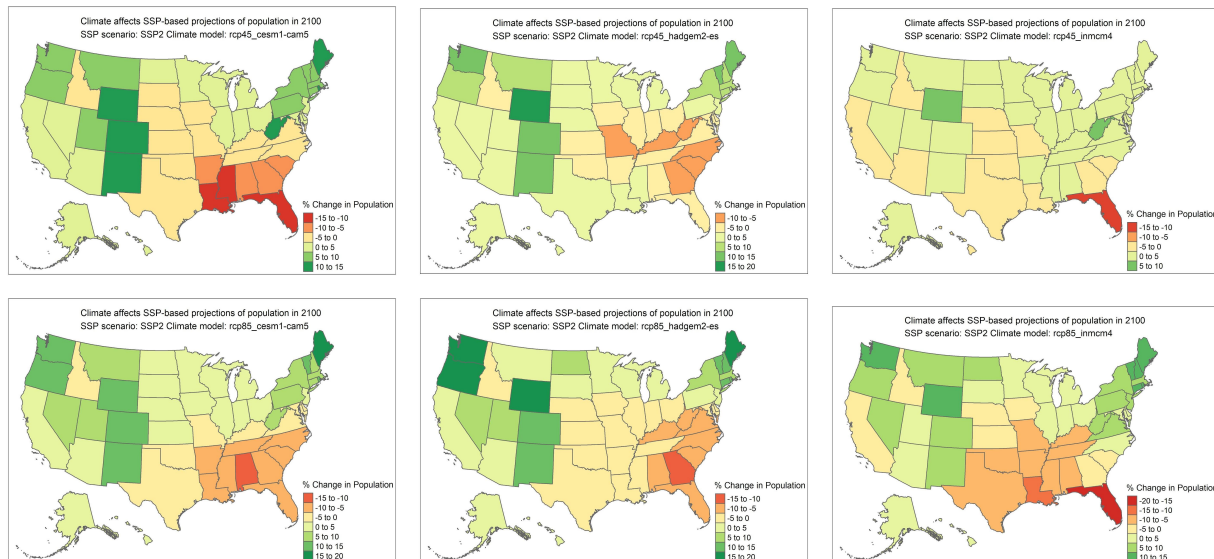


Figure S1: Difference in end-of-century population when economic feedbacks are omitted. SSP2, RCP4.5, CESM-CAM5.



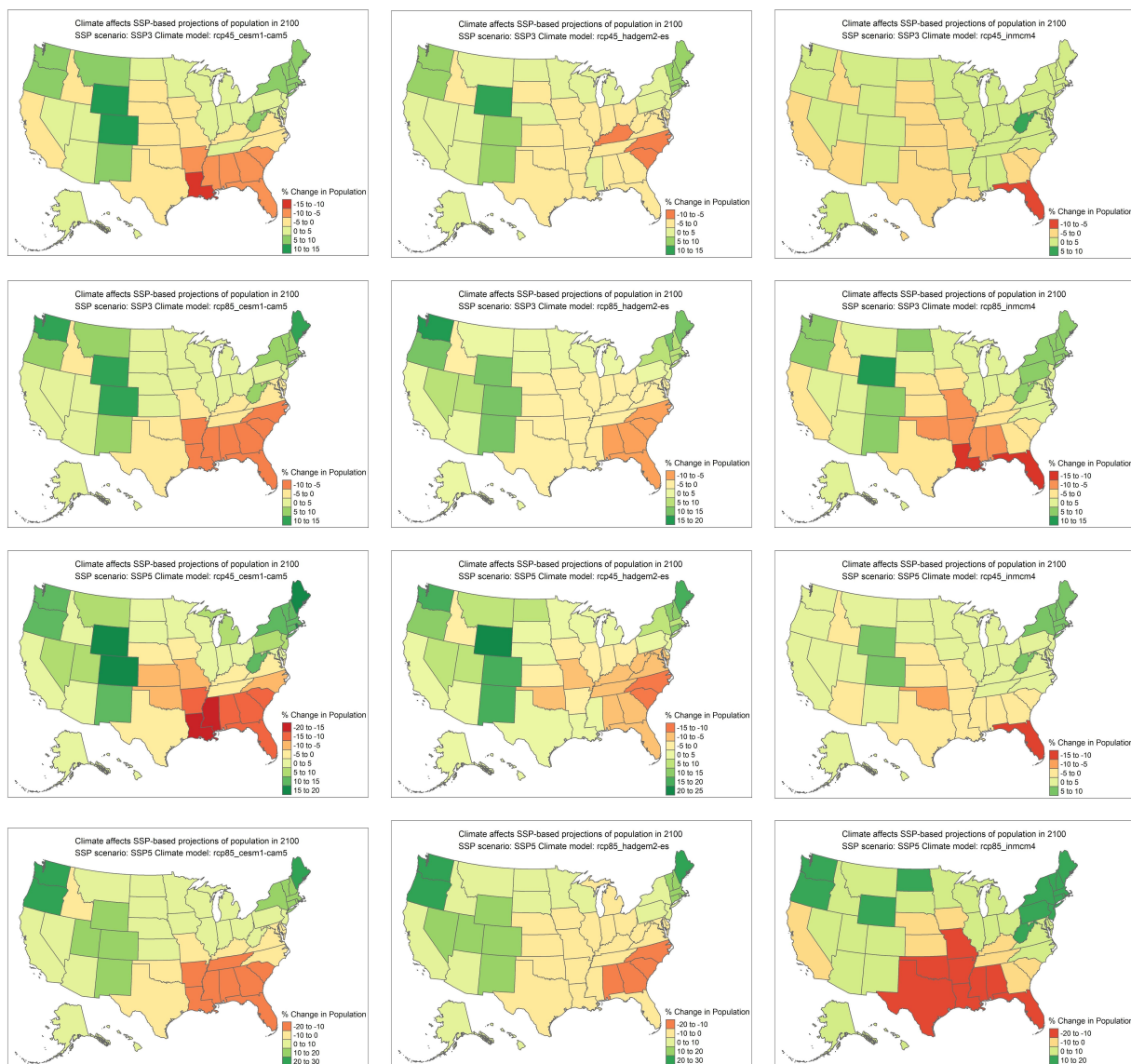


Figure S2: End-of-century changes in population. All scenarios. RCP and SSP vary by row. CMIP5 ensemble member varies by column. Population change expressed as a percent difference from projected population without the influence of climate by state.

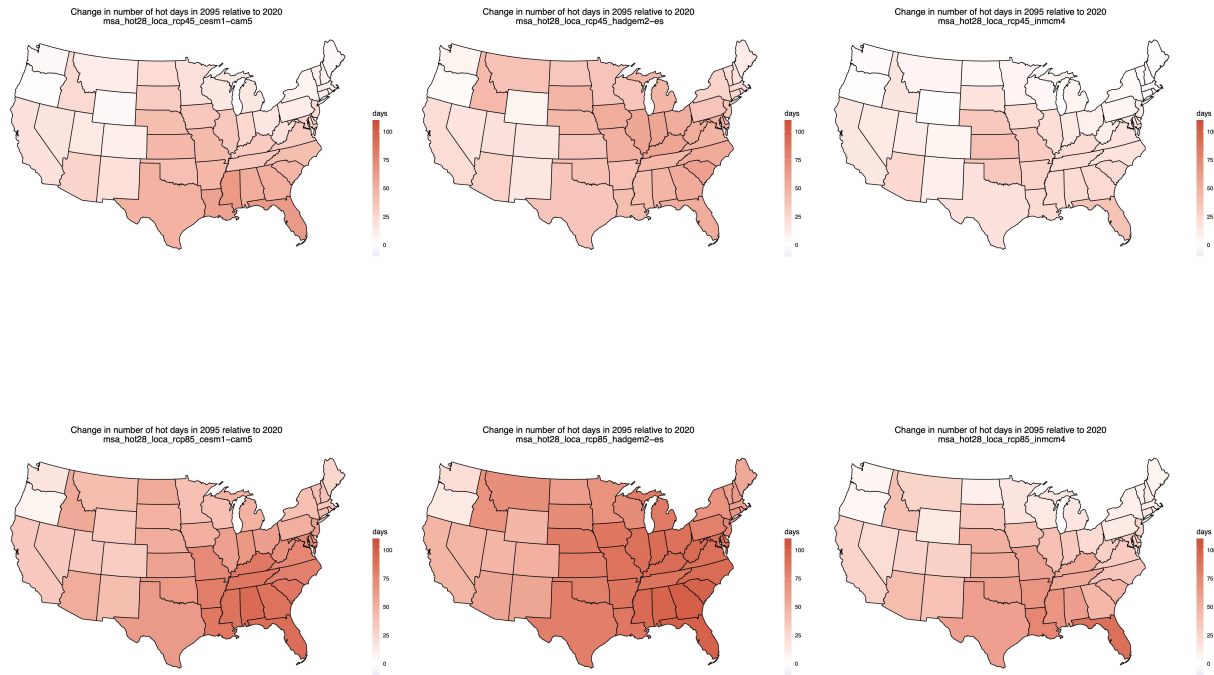


Figure S3: End-of-century changes in temperature. All scenarios. RCP varies by row and CMIP5 ensemble member varies by column. Change in the number of days annually in which average temperature exceeds 28°C in 2095.