

Relationship between mortality and use of sodium bicarbonate at the time of dialysis initiation: a prospective observational study

Hikaru Morooka,¹ Junichiro Yamamoto², Akihito Tanaka,¹ Daijo Inaguma³, Shoichi Maruyama⁴

¹Division of Nephrology, Nagoya University Hospital, Nagoya, Japan

²Division of Nephrology, Tsushima City Hospital, Tsushima, Japan

³Division of Internal Medicine, Fujita Health University Bantane Hospital, Nagoya, Japan

⁴Division of Nephrology, Nagoya University Graduate School of Medicine, Nagoya, Japan

Corresponding author: Akihito Tanaka

Division of Nephrology,

Nagoya University Hospital

Tsurumaicho, 65, Showa Ward, Nagoya, Aichi, Japan

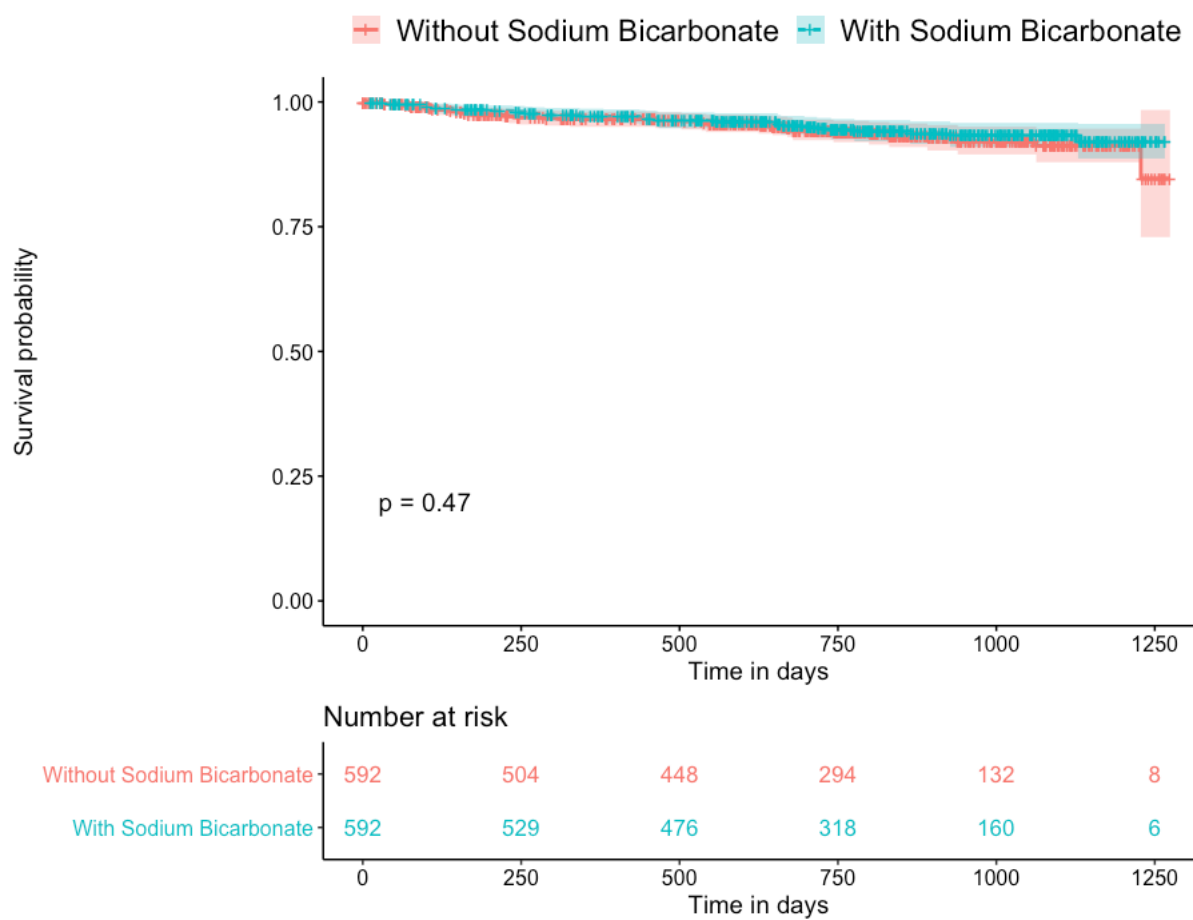
Tel: +81-52-741-2111

Fax: +81-52-744-2209

E-mail: tanaka17@med.nagoya-u.ac.jp

Supplemental material

Supplementary figure 1: Kaplan-Meier plot for CVD-related death in matched patients with and without use of oral sodium bicarbonate before dialysis initiation. CVD; cardiovascular disease.



Supplementary figure 2: Kaplan-Meier plot for infection-related death in matched patients with and without use of oral sodium bicarbonate before dialysis initiation.

