

# **Depletion of EREG enhances the osteo/dentinogenic differentiation ability of dental pulp stem cells via p38 MAPK and Erk pathway in inflammatory microenvironment**

Running head: EREG inhibits osteo/dentinogenic differentiation of DPSC

Ran Ran<sup>1,2</sup> | Haoqing Yang<sup>1</sup> | Yangyang Cao<sup>1</sup> | Wanhao Yan<sup>1</sup> | Luyuan Jin<sup>3\*</sup> | Ying Zheng<sup>2\*</sup>

<sup>1</sup> Laboratory of Molecular Signaling and Stem Cells Therapy, Beijing Key Laboratory of Tooth Regeneration and Function Reconstruction, Capital Medical University, School of Stomatology, Beijing, China.

<sup>2</sup> Department of Endodontics, Capital Medical University School of Stomatology, Beijing, China.

<sup>3</sup> Department of General Dentistry and Integrated Emergency Dental Care, Capital Medical University, School of Stomatology, Beijing, China.

\* Correspondence

Dr. Ying Zheng, Department of Endodontics, Capital Medical University School of Stomatology, Beijing 10050, China. Tel.: +86 10 5709 9074; Fax: 861067062012; Email: zhengyingyus@yahoo.com

Or Dr. Luyuan Jin, Department of General Dentistry and Integrated Emergency Dental Care, Capital Medical University School of Stomatology, Beijing 100050, China. Tel.: +86 10 5709 9255; Fax: 861067062012; E-mail: sujin\_0309@163.com.

Figure1

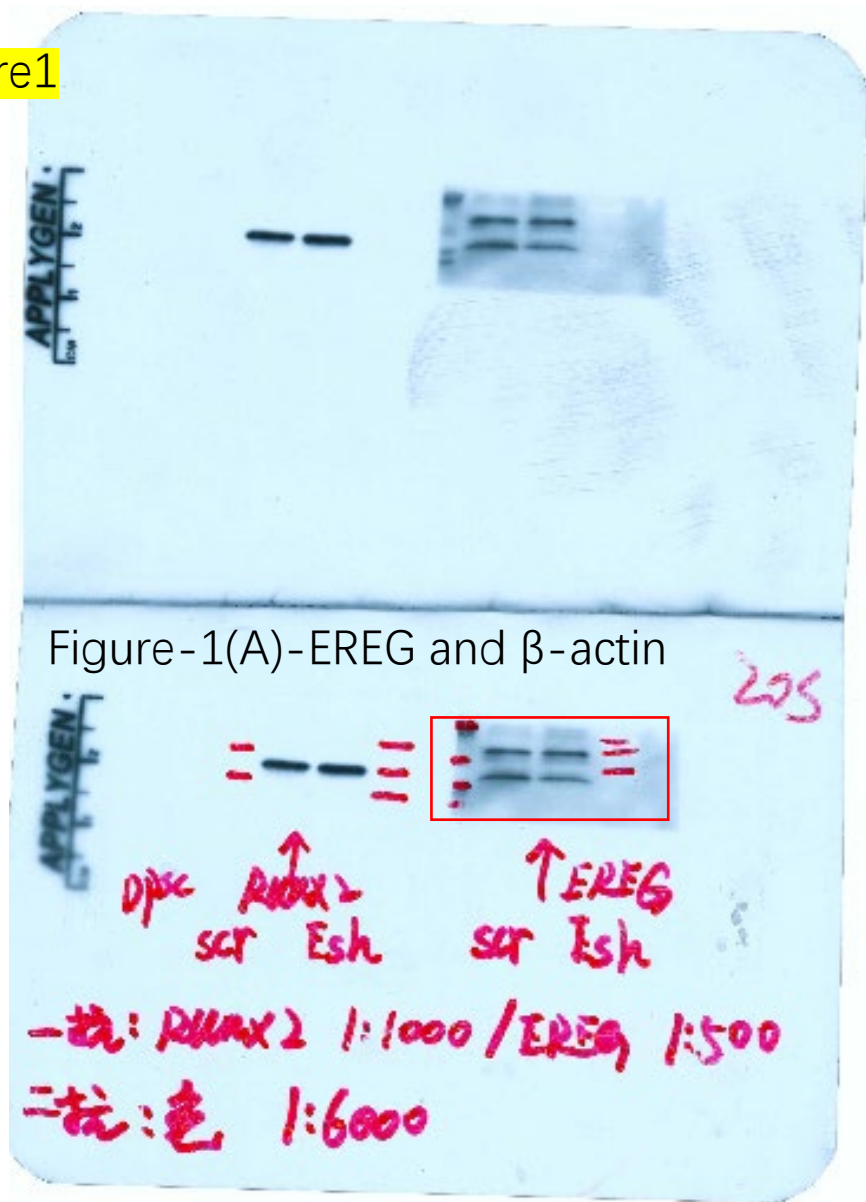


Figure (A)

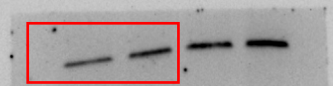


Figure (A) -p-p38

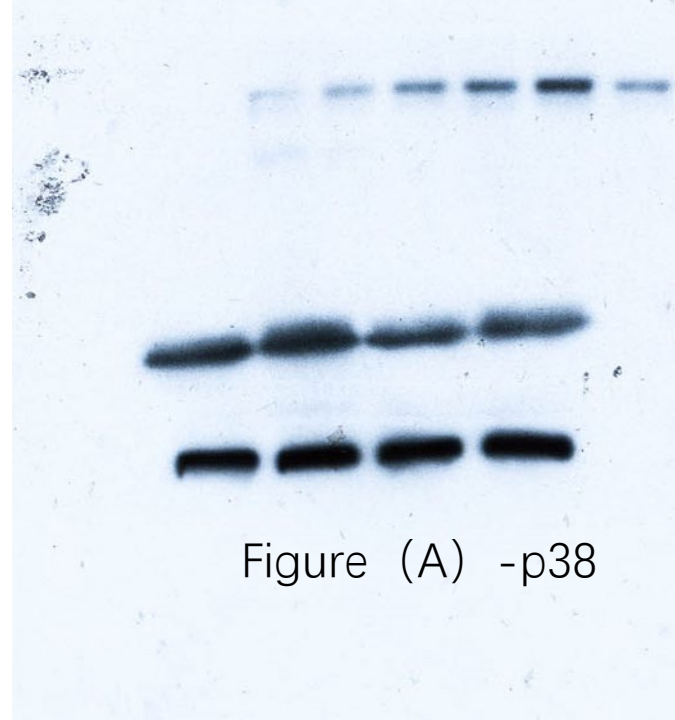
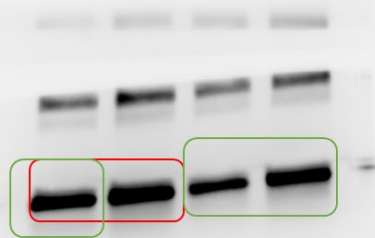


Figure (A) -p38



Scramsh EREGsh Scramsh+TNF- $\alpha$  EREGsh +TNF- $\alpha$

Red -3 (A) -p-Erk  
Green-5 (A) -p-erk

Scramsh EREGsh EREGsh+pd98059

Red-Figure3 (C) -Erk  
Green-Figure3 (A) -Erk

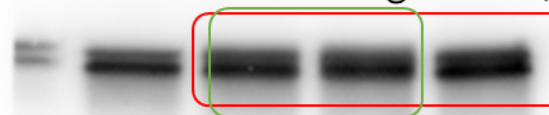


Figure3 (C)

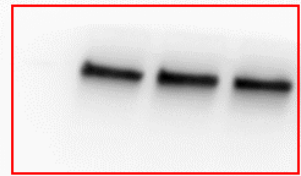


Figure3-(C)- $\beta$ -actin

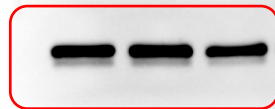


Figure3(C)-p-Erk

Scramsh EREGsh EREGsh+pd98059

Red-Figure3 (C) -Erk

Green-Figure3 (A) -Erk

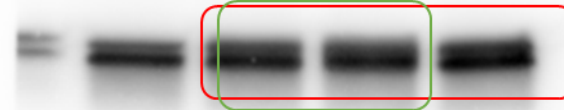


Figure3 (E)

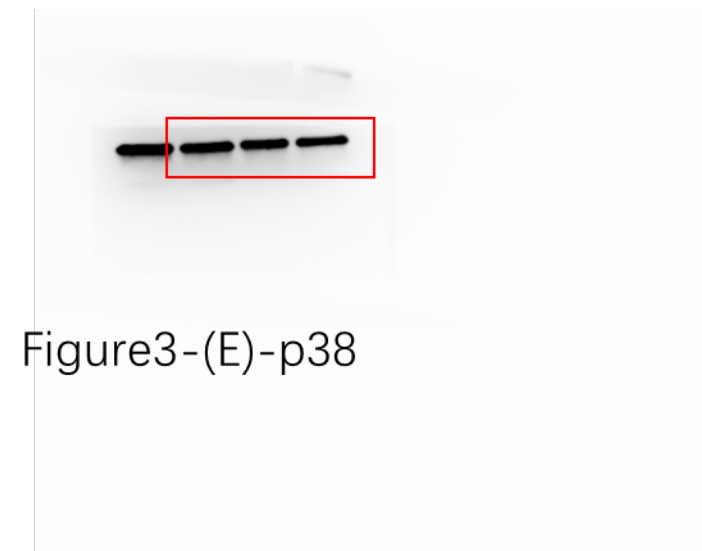
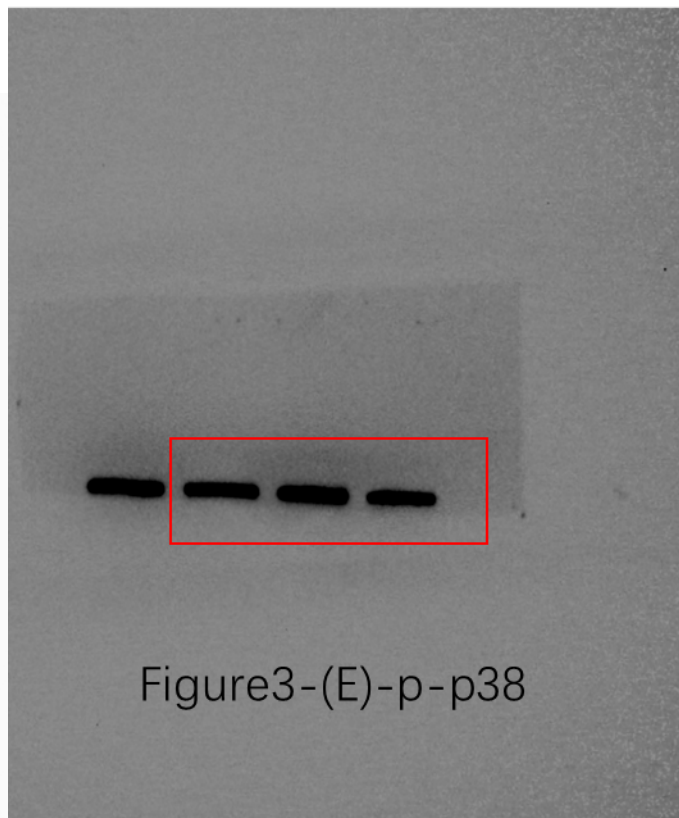
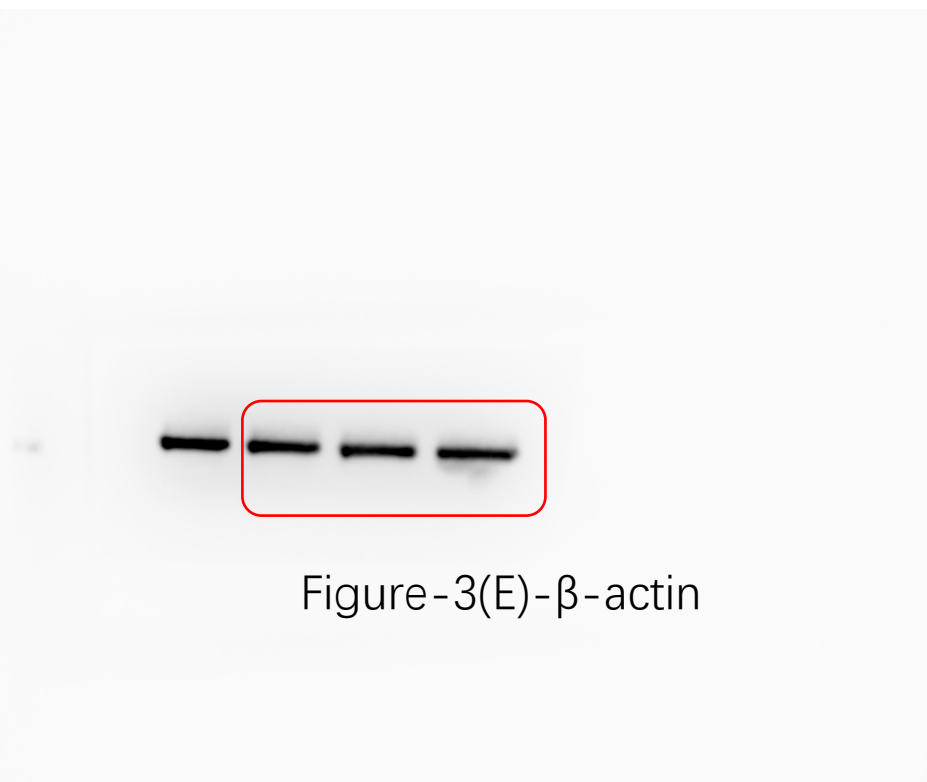


Figure5

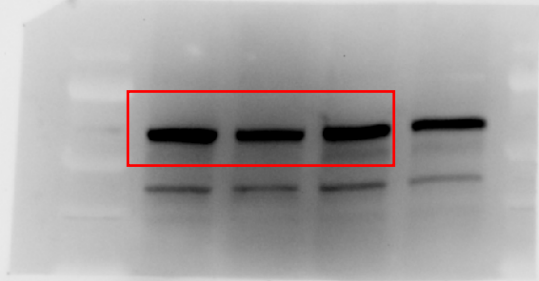


Figure-5 (A) p-p38



Scramsh EREGsh Scramsh+TNF- $\alpha$  EREGsh +TNF- $\alpha$

Red -3 (A) -p-Erk

Green-5 (A) -p-erk



Figure-5-(A)-p38

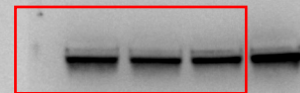


Figure-5(A)-Erk