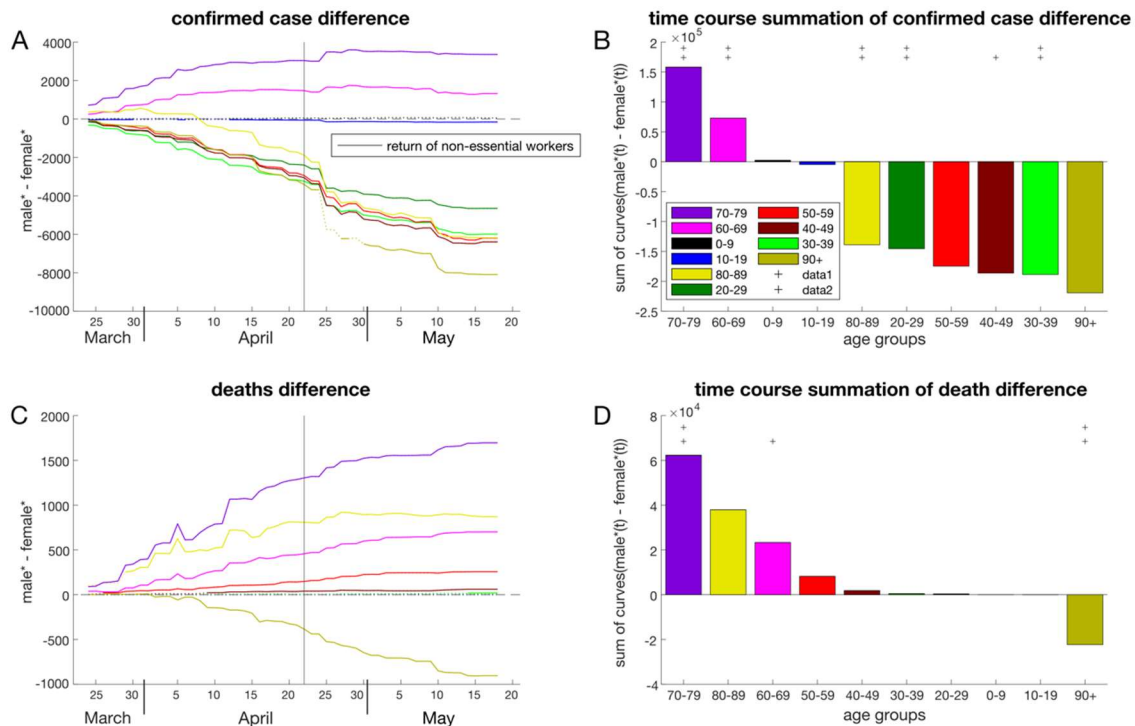
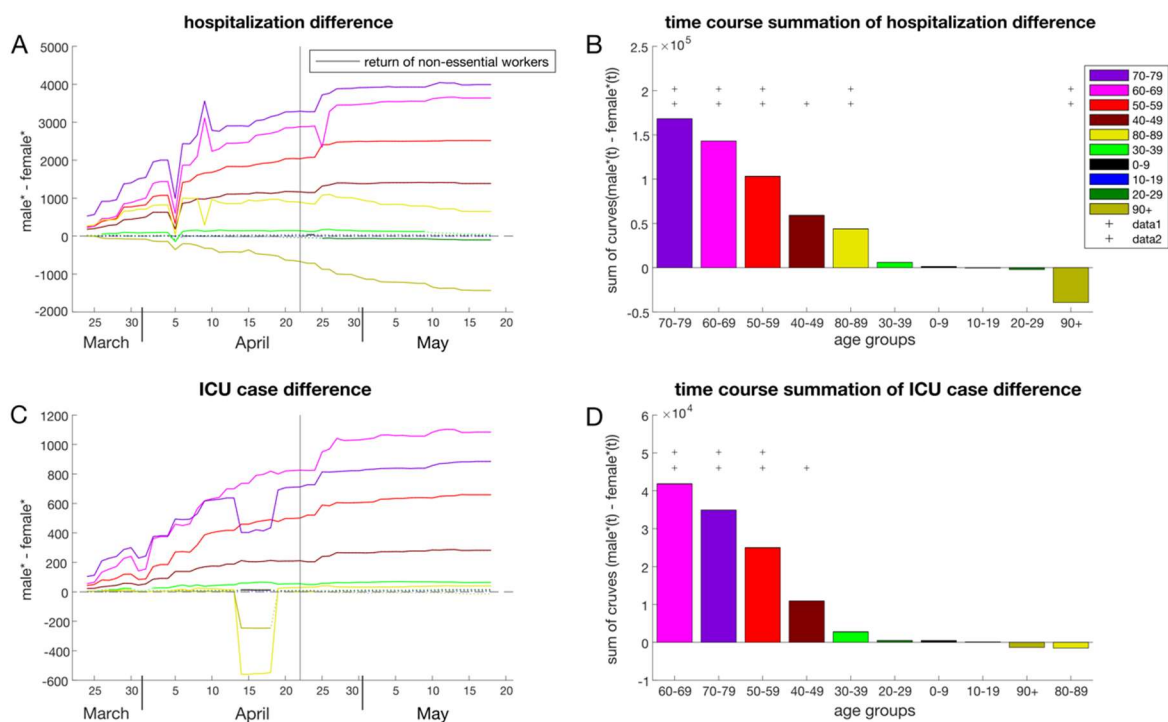


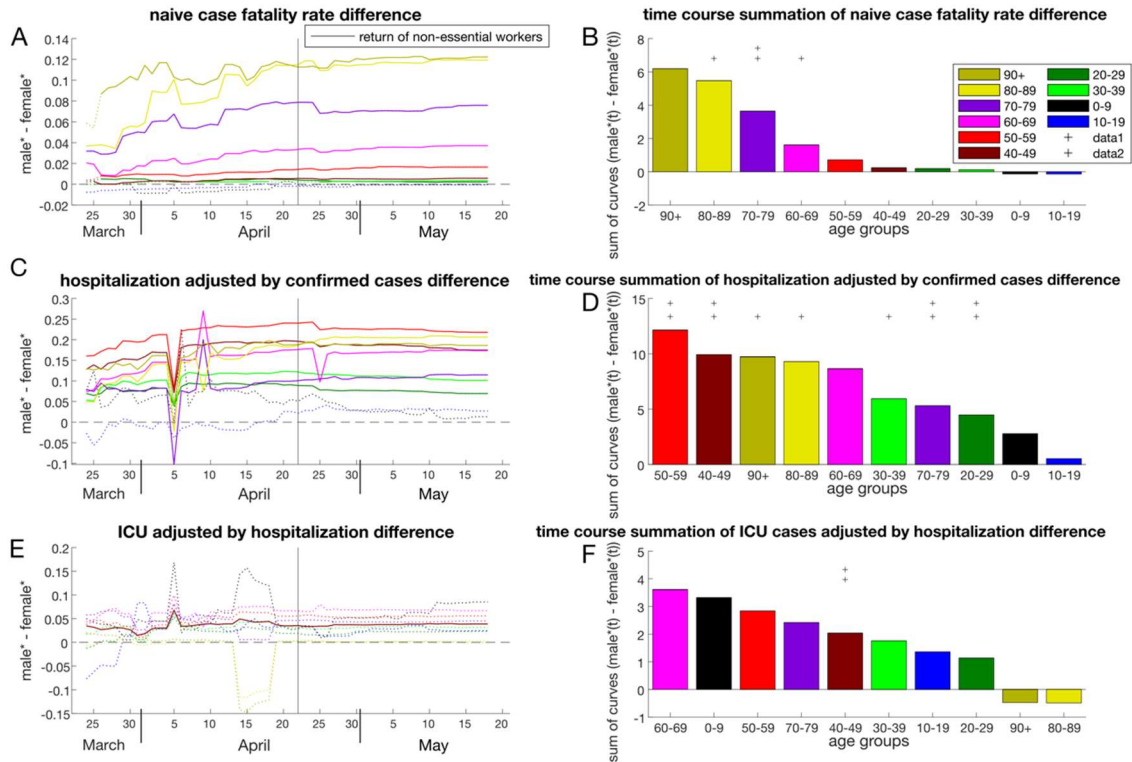
## Supplementary Information



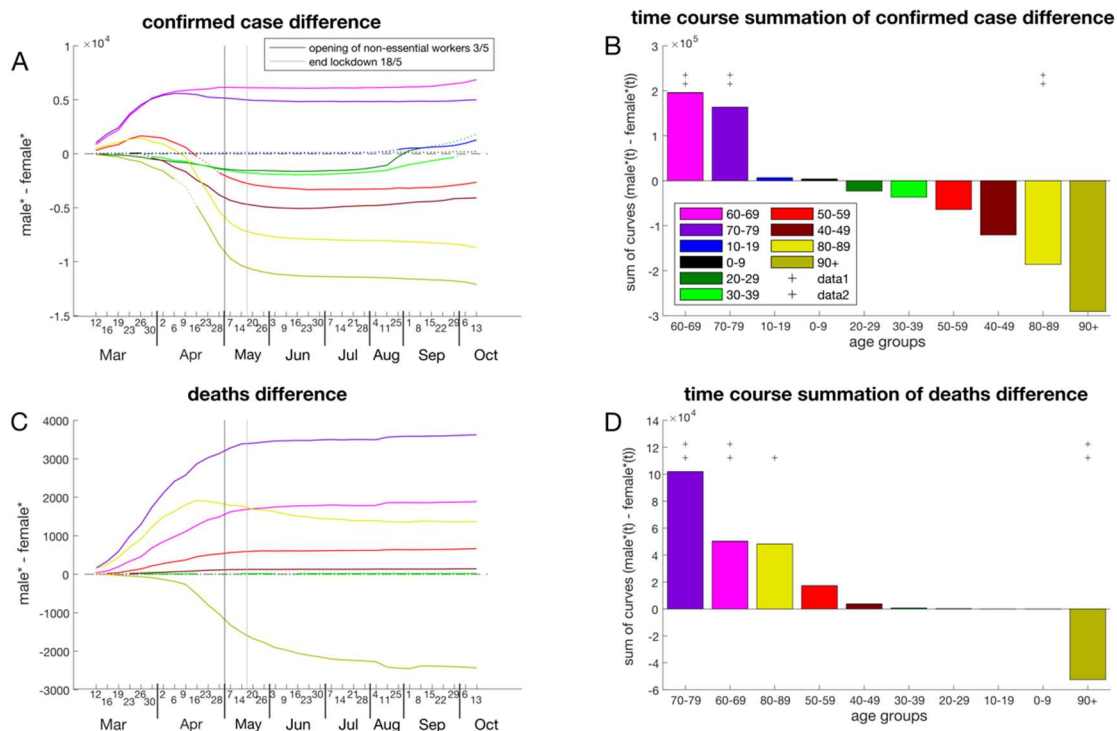
**Suppl. Fig. 1. Time course analysis of confirmed cases (A and B) and deaths (C and D) not normalized by country population for COVID19-outbreak in Spain.** In A and C, dotted lines indicate not significant difference, full lines indicate significant difference. \*values are proportions on the entire national population for 2019 in the respective age range. In B and D, the presence of at least one '+' (1 plus indicates p-values below 0.05, 2 plus indicate p-values below 0.001) on top of a specific age strata indicates that the gender inequality is statistically significant.



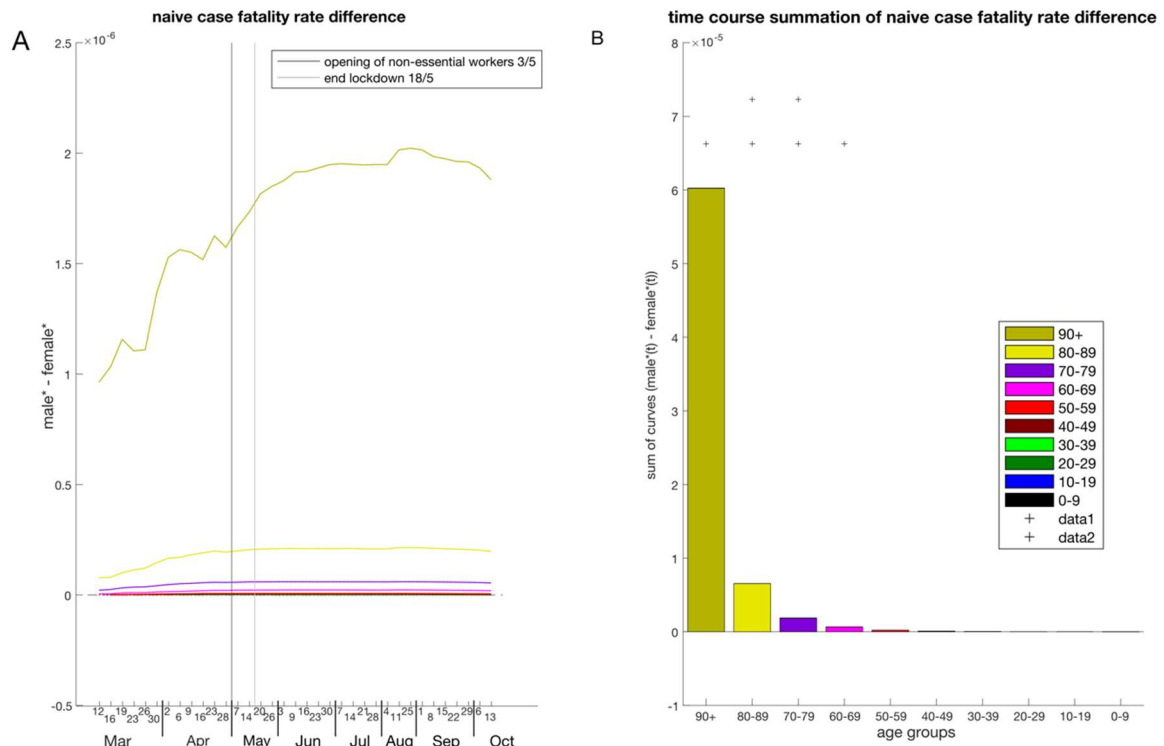
**Suppl. Fig. 2. Time course analysis of hospitalization (A and B) and ICU cases (C and D) not normalized by country population for COVID19-outbreak in Spain.** In A and C, dotted lines indicate not significant difference, full lines indicate significant difference. \*values are proportions on the entire national population for 2019 in the respective age range. In B and D, the presence of at least one '+' (1 plus indicates p-values below 0.05, 2 plus indicate p-values below 0.001) on top of a specific age strata indicates that the gender inequality is statistically significant.



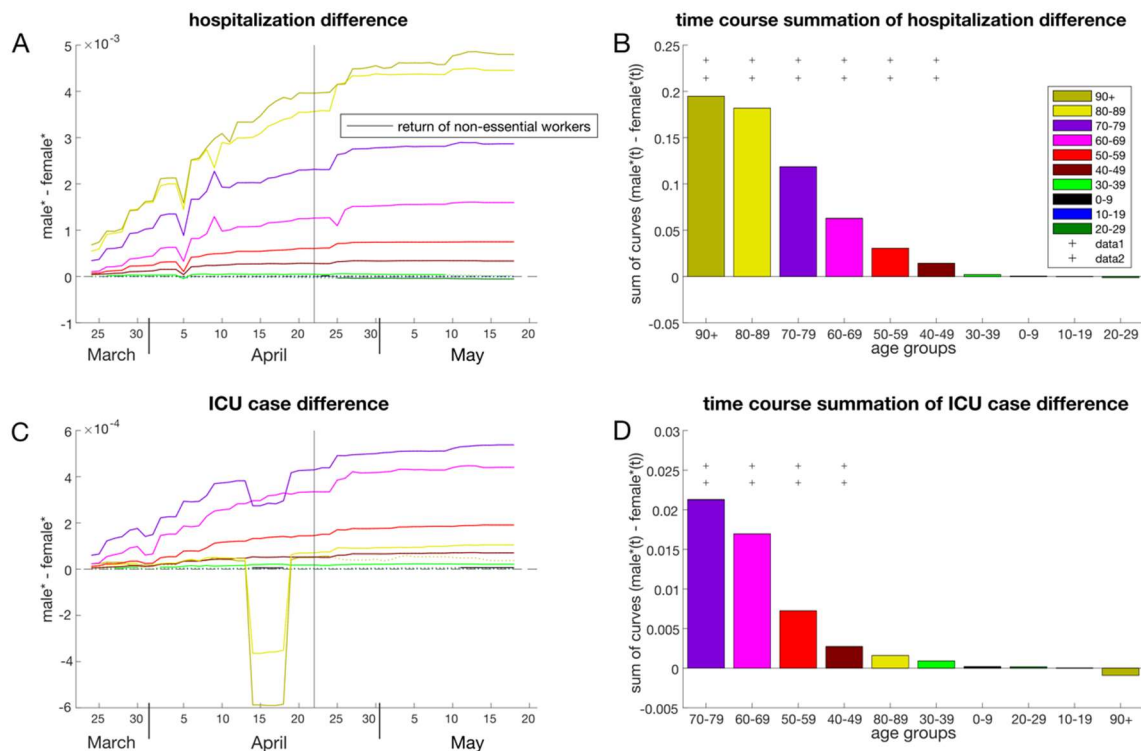
**Suppl. Fig. 3. Time course analysis of naïve case fatality rate (A and B), ratio of hospitalization and confirmed cases (C and D) and ratio of ICU and hospitalization (E and F) not normalized by country population for COVID19-outbreak in Spain.** In A and C, dotted lines indicate not significant difference, full lines indicate significant difference. \*values are proportions on the entire national population for 2019 in the respective age range. In B and D, the presence of at least one '+' (1 plus indicates p-values below 0.05, 2 plus indicate p-values below 0.001) on top of a specific age strata indicates that the gender inequality is statistically significant.



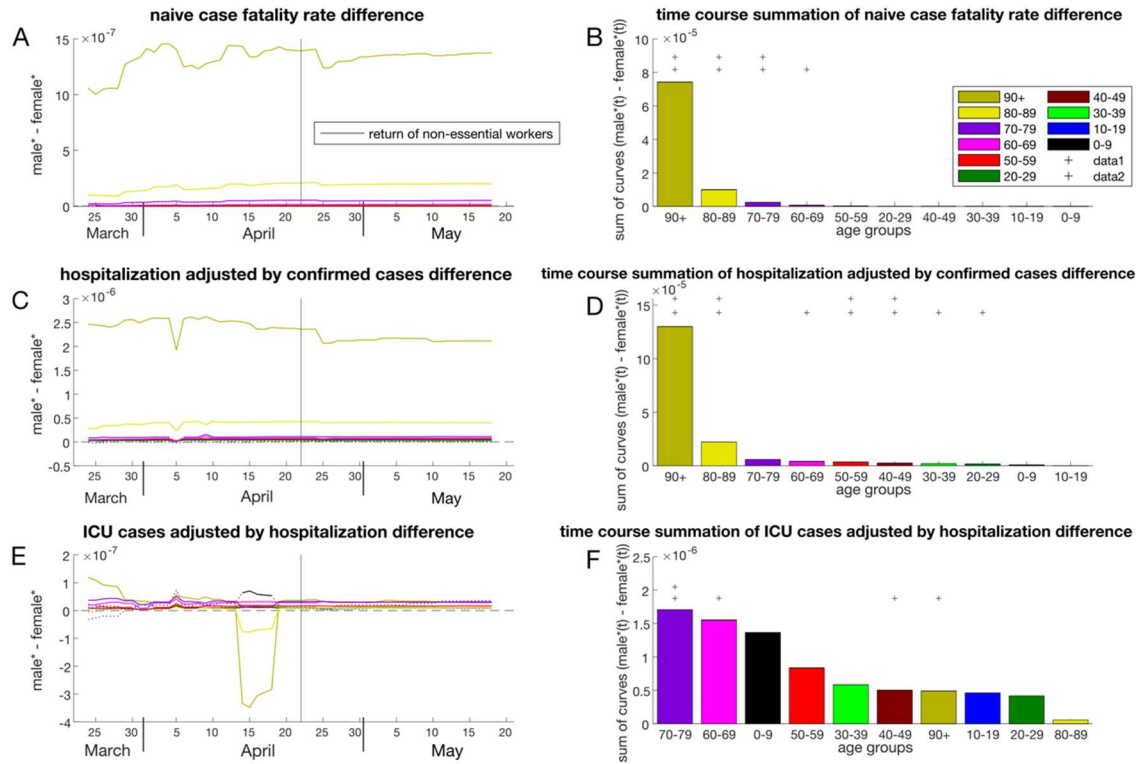
**Suppl. Fig. 4. Time course analysis of confirmed cases (A and B) and deaths (C and D) not normalized by country population for COVID19-outbreak in Italy.** In A and C, dotted lines indicate not significant difference, full lines indicate significant difference. \*values are proportions on the entire national population for 2019 in the respective age range. In B and D, the presence of at least one '+' (1 plus indicates p-values below 0.05, 2 plus indicate p-values below 0.001) on top of a specific age strata indicates that the gender inequality is statistically significant.



**Suppl. Fig. 5. Time course analysis of naïve case fatality rate (A and B), ratio of hospitalization and confirmed cases (C and D) and ratio of ICU and hospitalization (E and F) not normalized by country population for COVID19-outbreak in Italy.** In A and C, dotted lines indicate not significant difference, full lines indicate significant difference. \*values are proportions on the entire national population for 2019 in the respective age range. In B and D, the presence of at least one '+' (1 plus indicates p-values below 0.05, 2 plus indicate p-values below 0.001) on top of a specific age strata indicates that the gender inequality is statistically significant.



**Suppl. Fig. 6. Time course analysis of hospitalization (A and B) and deaths (C and D) normalized by country population but not interpolated for COVID19-outbreak in Spain.** In A and C, dotted lines indicate not significant difference, full lines indicate significant difference. \*values are proportions on the entire national population for 2019 in the respective age range. In B and D, the presence of at least one '+' (1 plus indicates p-values below 0.05, 2 plus indicate p-values below 0.001) on top of a specific age strata indicates that the gender inequality is statistically significant.



**Suppl. Fig. 7. Time course analysis of naïve case fatality rate (A and B), ratio of hospitalization and confirmed cases (C and D) and ratio of ICU and hospitalization (E and F) normalized by country population but not interpolated for COVID19-outbreak in Spain.** In A, C and E, dotted lines indicate not significant difference, full lines indicate significant difference. \*values are proportions on the entire national population for 2019 in the respective age range. In B, D and F, the presence of at least one '+' (1 plus indicates p-values below 0.05, 2 plus indicate p-values below 0.001) on top of a specific age strata indicates that the gender inequality is statistically significant.