

Title of the manuscript: Snow algae blooming are benefitable for microinvertebrates assemblages  
(Tardigrada and Rotifera) on the seasonal snow patches in Japan

Authors: Masato Ono<sup>1\*</sup>, Nozomu Takeuchi<sup>2</sup>, Krzysztof Zawierucha<sup>3</sup>

<sup>1</sup> Graduate School of Science and Engineering, Chiba University, Chiba, Japan

<sup>2</sup> Department of Earth Science, Graduate School of Science, Chiba University, Chiba, Japan

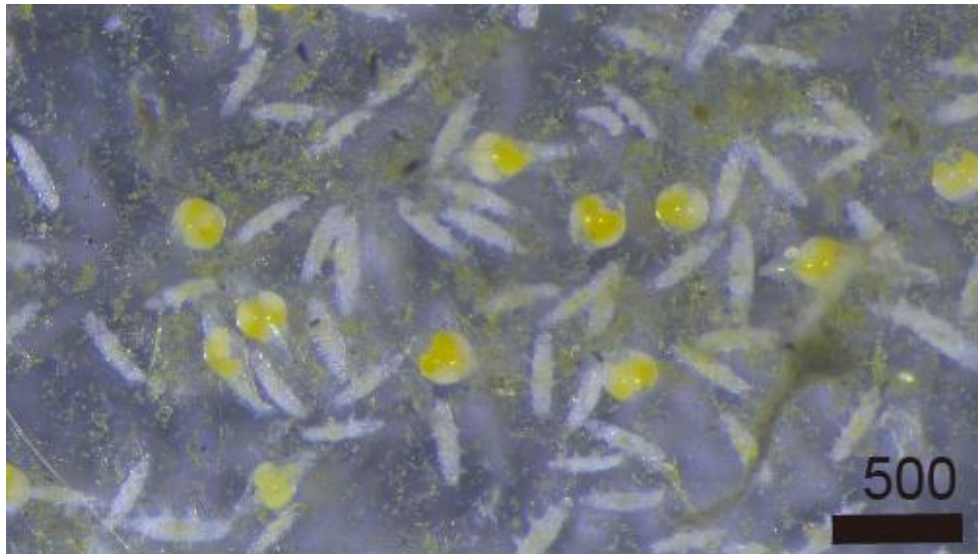
<sup>3</sup> Department of Animal Taxonomy and Ecology, Adam Mickiewicz University, Poznań, Poland

This file includes three supplementary figures. Legends are below and all figures are in next page.

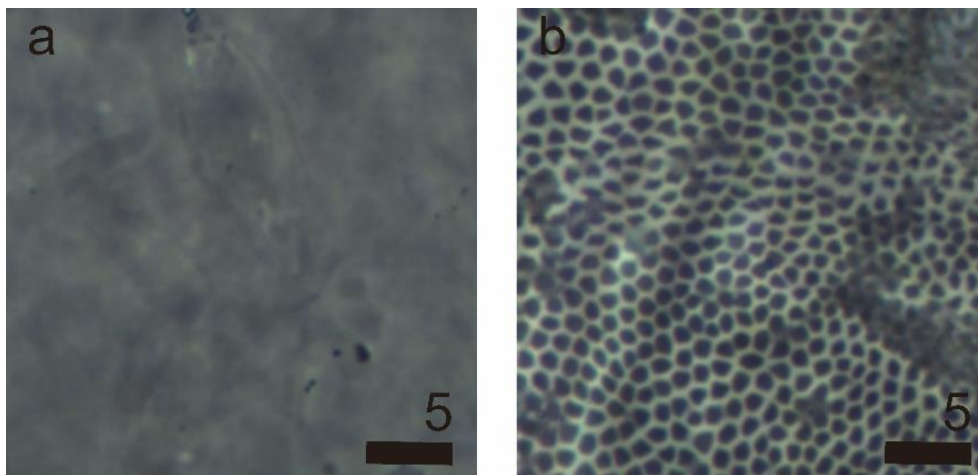
Supplementary Figure S1. Microinvertebrates and snow algae in green snow (SM, black background). Scale bar is in micrometer.

Supplementary Figure S2. Cuticle of *Hypsibius* **sp.** (PCM). (a) smooth cuticle, (b) reticular cuticle. All scale bars in micrometers.

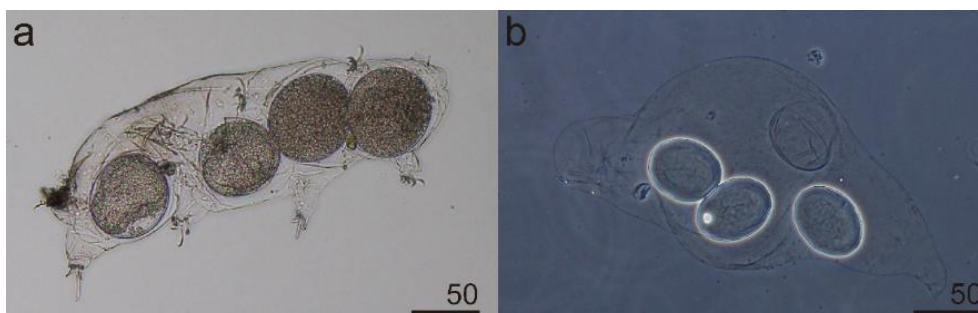
Supplementary Figure S3. Exuvia of microinvertebrates with egg. (a) *Hypsibius* **sp.** (LM), (b) bdelloid rotifers (PCM). All scale bars in micrometers.



**Supplementary Figure S1.** Microinvertebrates and snow algae in green snow (SM, black background). Scale bar is in micrometer.



**Supplementary Figure S2.** Cuticle of *Hypsibius* sp. (PCM). (a) cuticle skin, (b) reticular skin. All scale bars in micrometers.



**Supplementary Figure S3.** Exuvia of microinvertebrates with egg. (a) *Hypsibius* sp. (LM), (b) bdelloid rotifers (PCM). All scale bars in micrometers.