

Supplementary materials

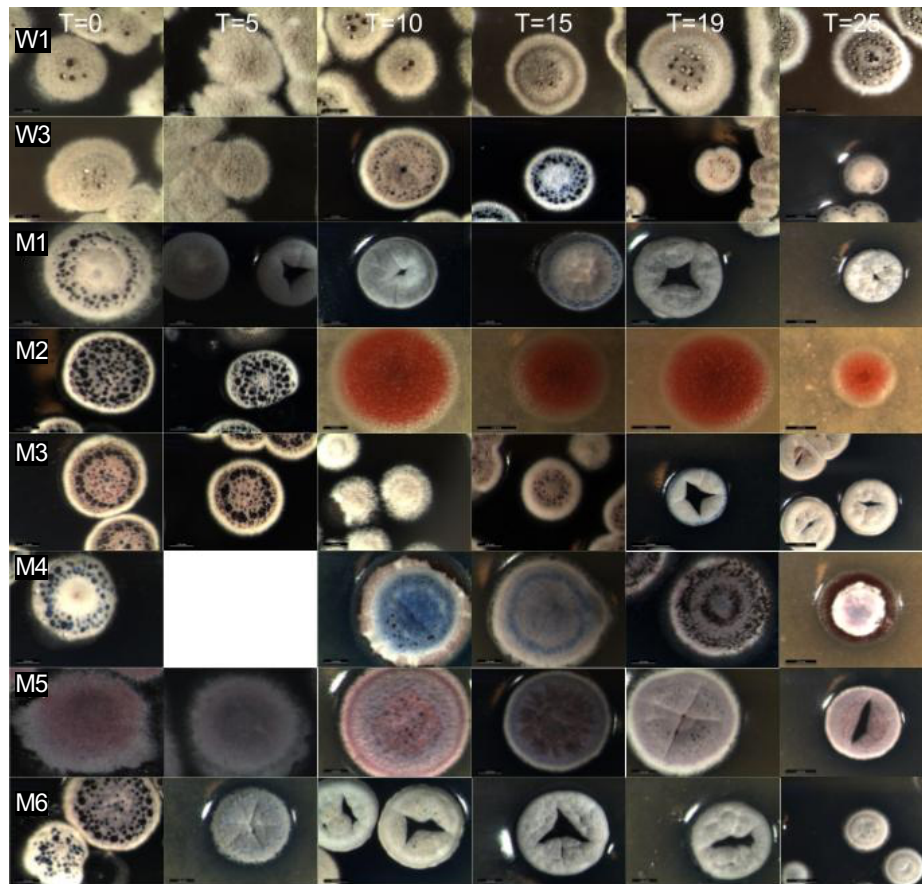


Fig. S1. Morphology of sampled strains. Morphogenesis, including aerial growth, sporulation and pigmentation, varies among and within lineages.

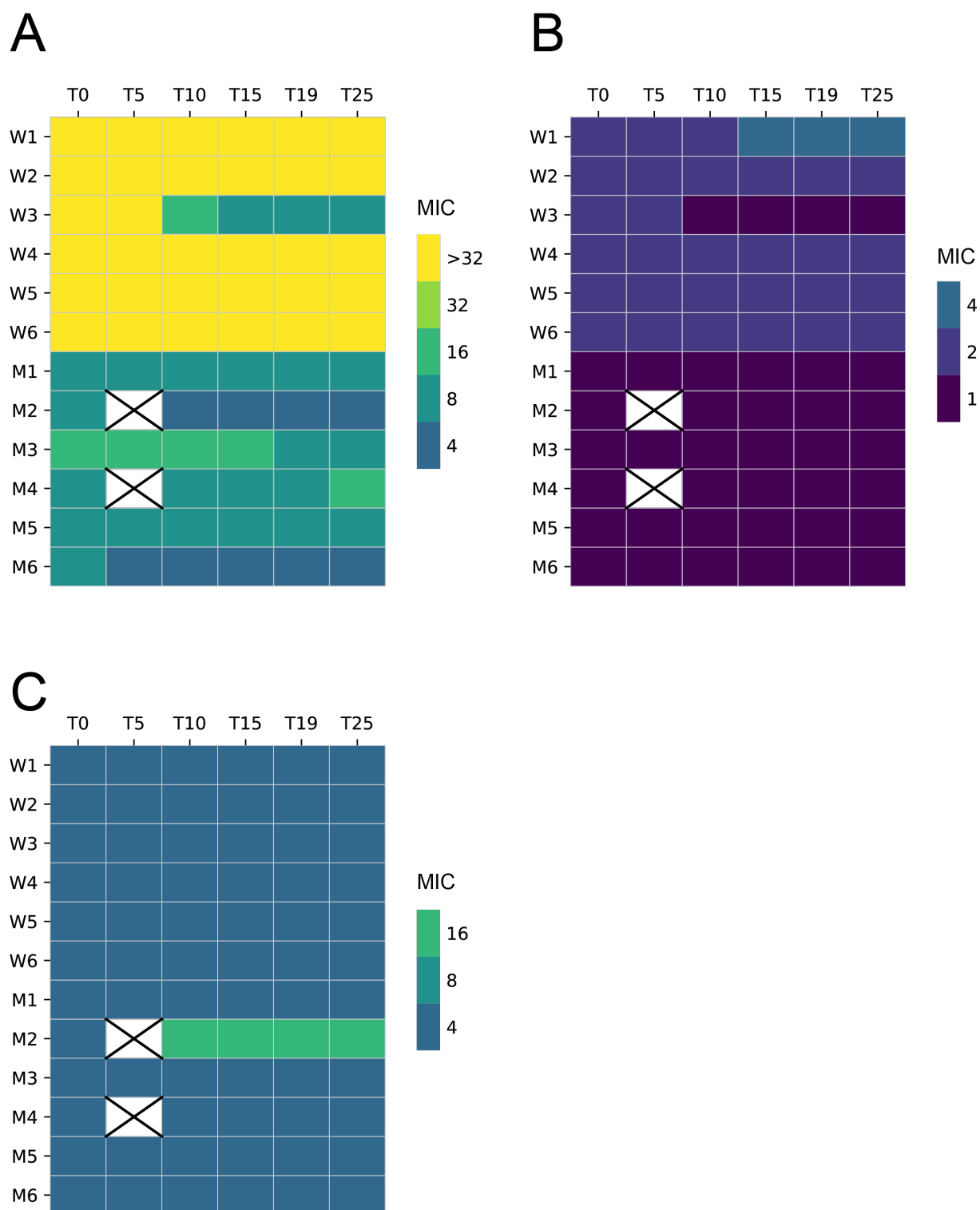


Fig. S2. Antibiotic resistance of sampled strains. MIC of (A) oxytetracycline (B) streptomycin or (C) ciprofloxacin. Unit is shown as $\mu\text{g ml}^{-1}$.

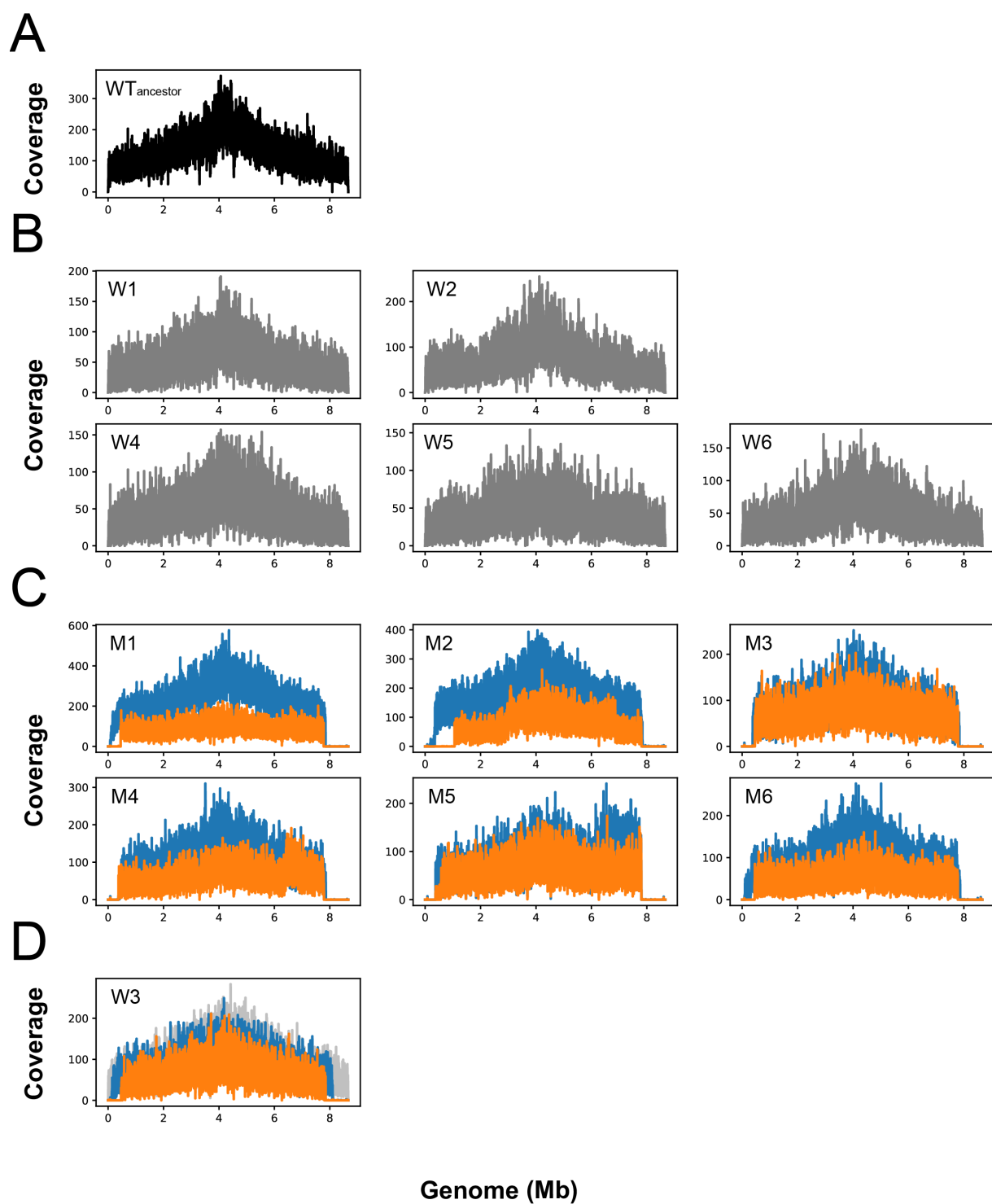


Fig. S3. Pacbio sequencing results of sampled strains. Plots indicate the coverage of reads mapped to the *S. coelicolor* M145 reference genome. **(A)** Ancestor WT. **(B)** T25 strains from WT lineages. **(C)** T0 (blue) and T25 (orange) strains from mutant lineages. **(D)** Strains of lineage W3 at T5 (light gray), T7 (blue) and T25 (orange).