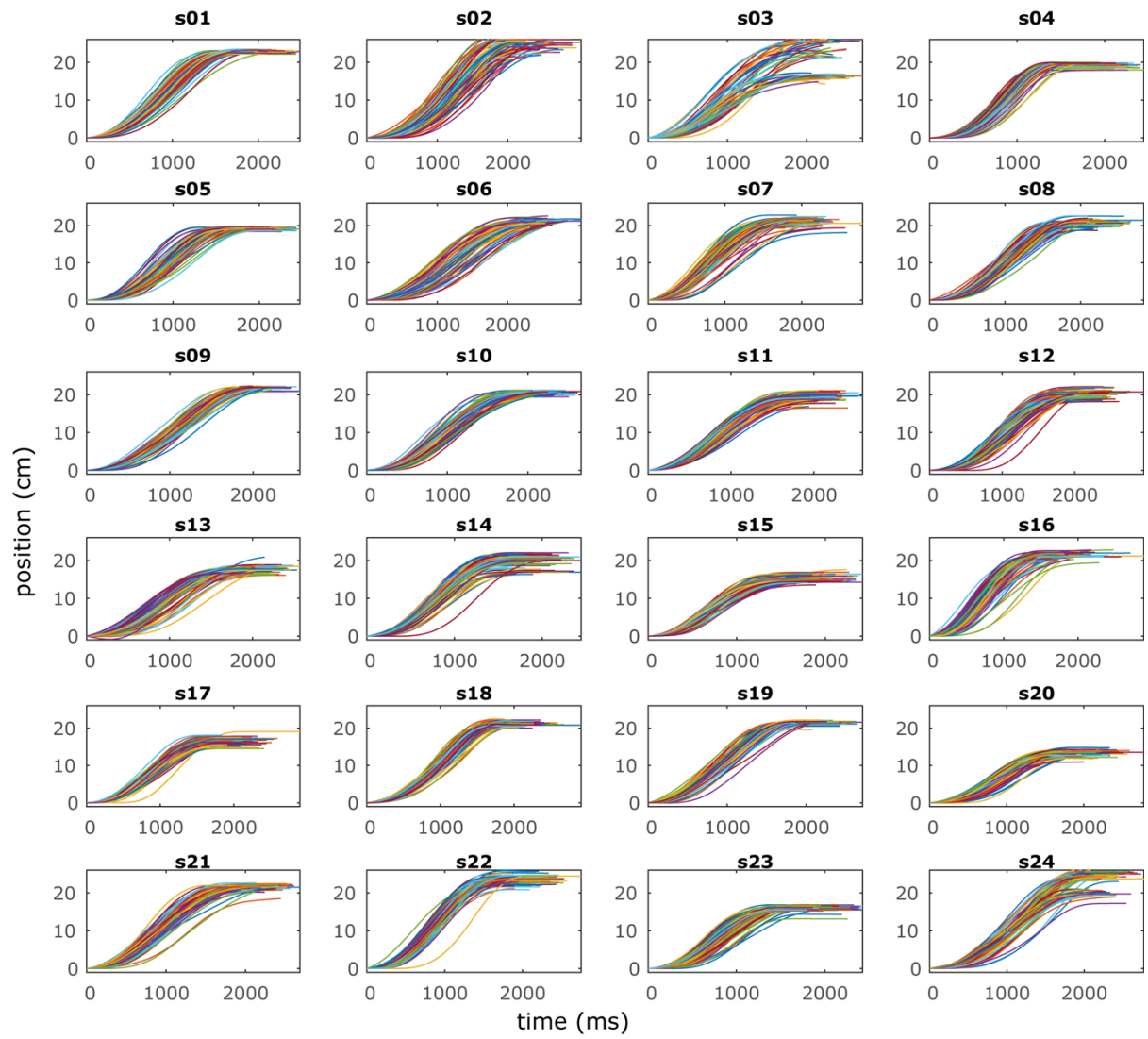
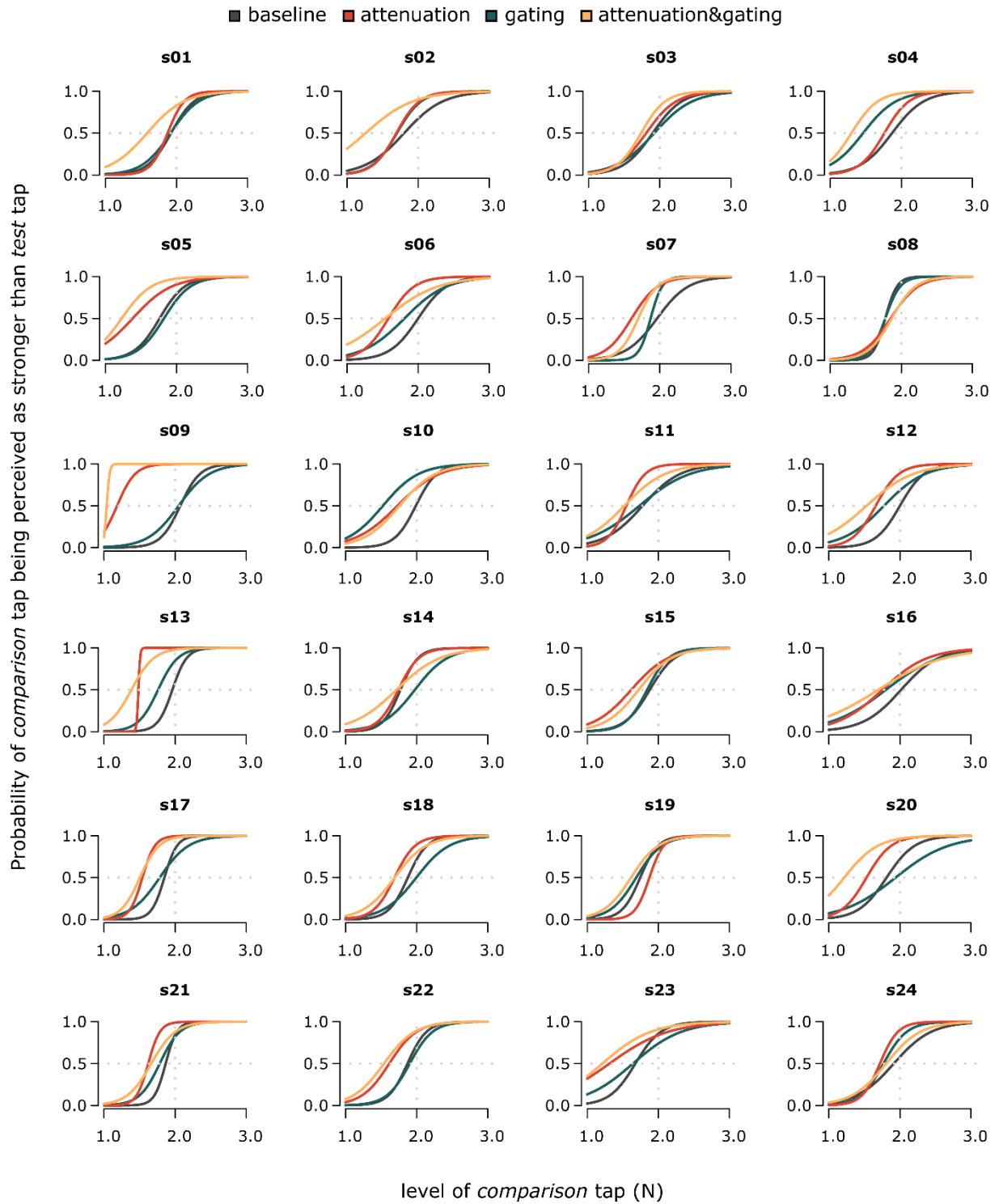
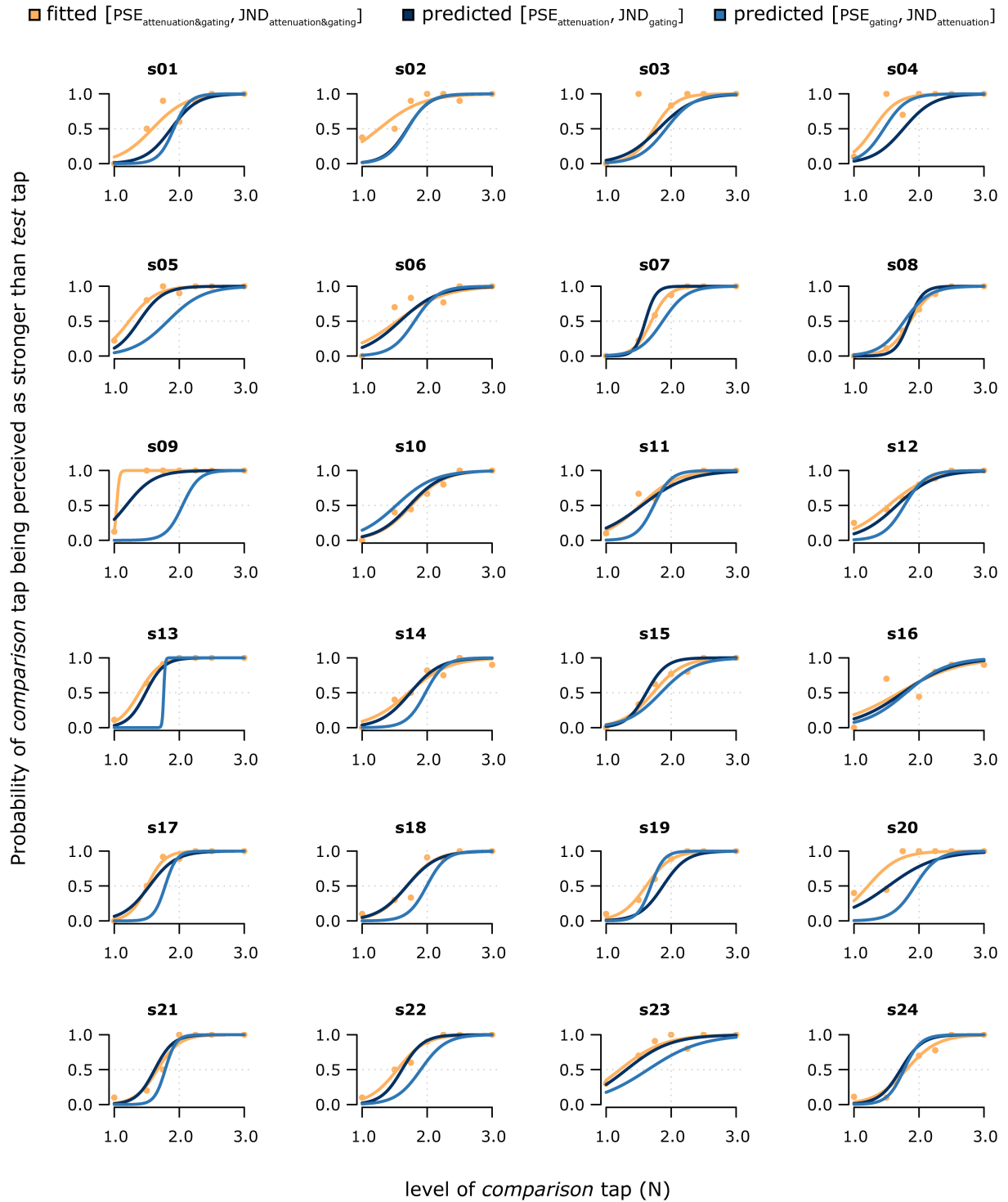


**Supplementary Fig. S1. Position traces for the participants' movements under the *gating* condition.**

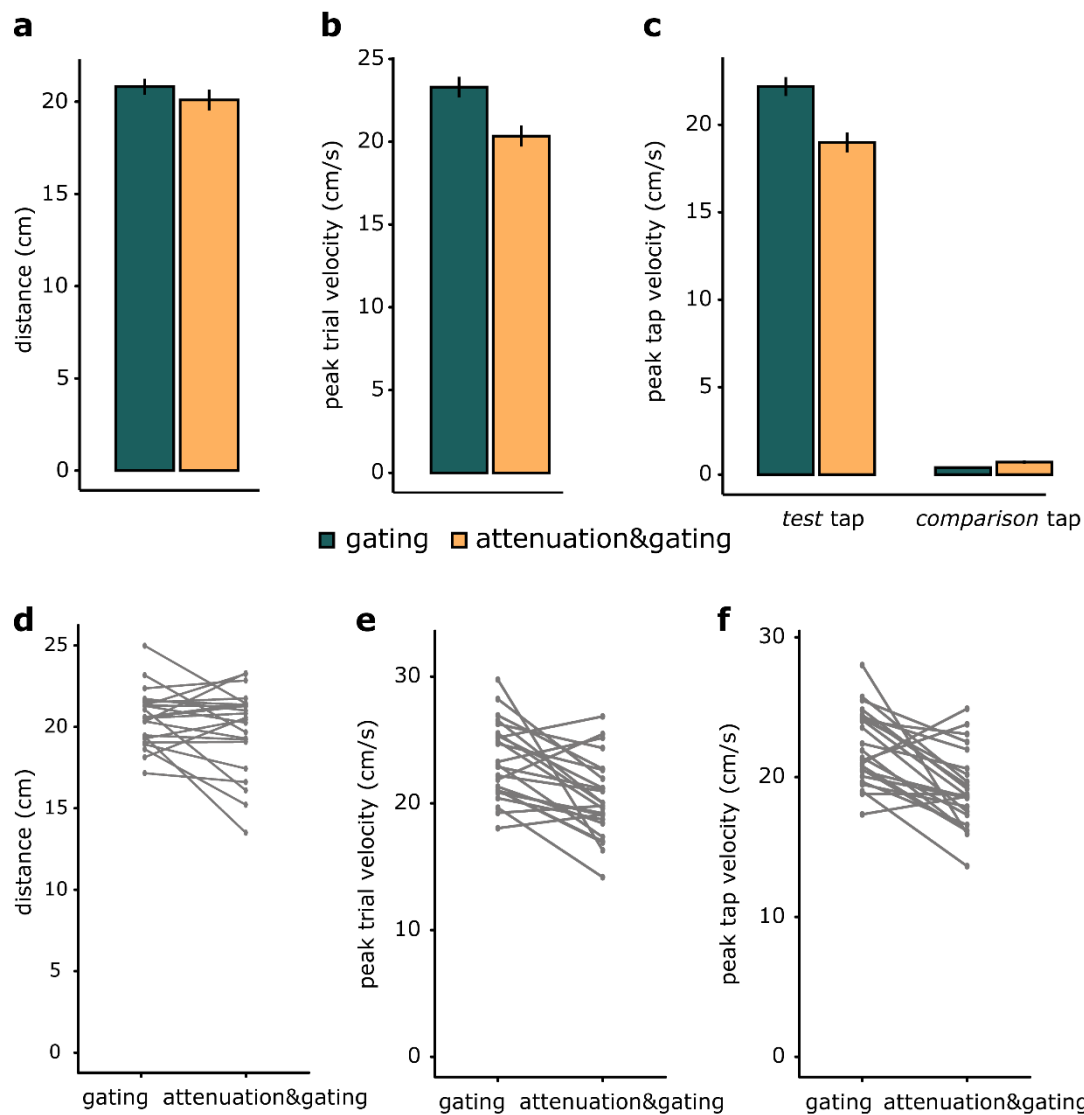


**Supplementary Fig. S2. Position traces for the participants' movements under the *attenuation&gating* condition.**





10  
 11 **Supplementary Fig. S4. Fitted logistic models based on the participants' responses under**  
 12 **the *attenuation&gating* condition (yellow) and predicted logistic curves based on the**  
 13 **participants' PSE and JND in the *attenuation* and *gating* conditions (blue).**



**Supplementary Fig. S5. Movement parameters for the *attenuation* and *attenuation&gating* conditions.** Bar graphs show (a) the total distance (mean  $\pm$  SEM) run by the participants' left arm, (b) the peak velocity (mean  $\pm$  SEM) for the entire trial duration, and (c) the peak velocity (mean  $\pm$  SEM) at the intervals of the two taps. (d, e, f) Line plots illustrate the differences in distance, peak trial velocity and peak tap velocity between the *gating* and *attenuation&gating* conditions.