

## **Reproductive strategies and reliance on pollinators in three highly invasive plant species**

Anisha Mandal<sup>1</sup>, Aman Biswakarma<sup>1</sup>, Dambar K. Pradhan<sup>1</sup>, Rohit Rai<sup>1</sup>, Shambu Rai<sup>1</sup>, and Umesh Srinivasan<sup>1</sup>

<sup>1</sup>Centre for Ecological Sciences, Indian Institute of Science, Bangalore - 560 012, INDIA

Corresponding author – [anishamandal63@gmail.com](mailto:anishamandal63@gmail.com)

**Supplementary materials:**

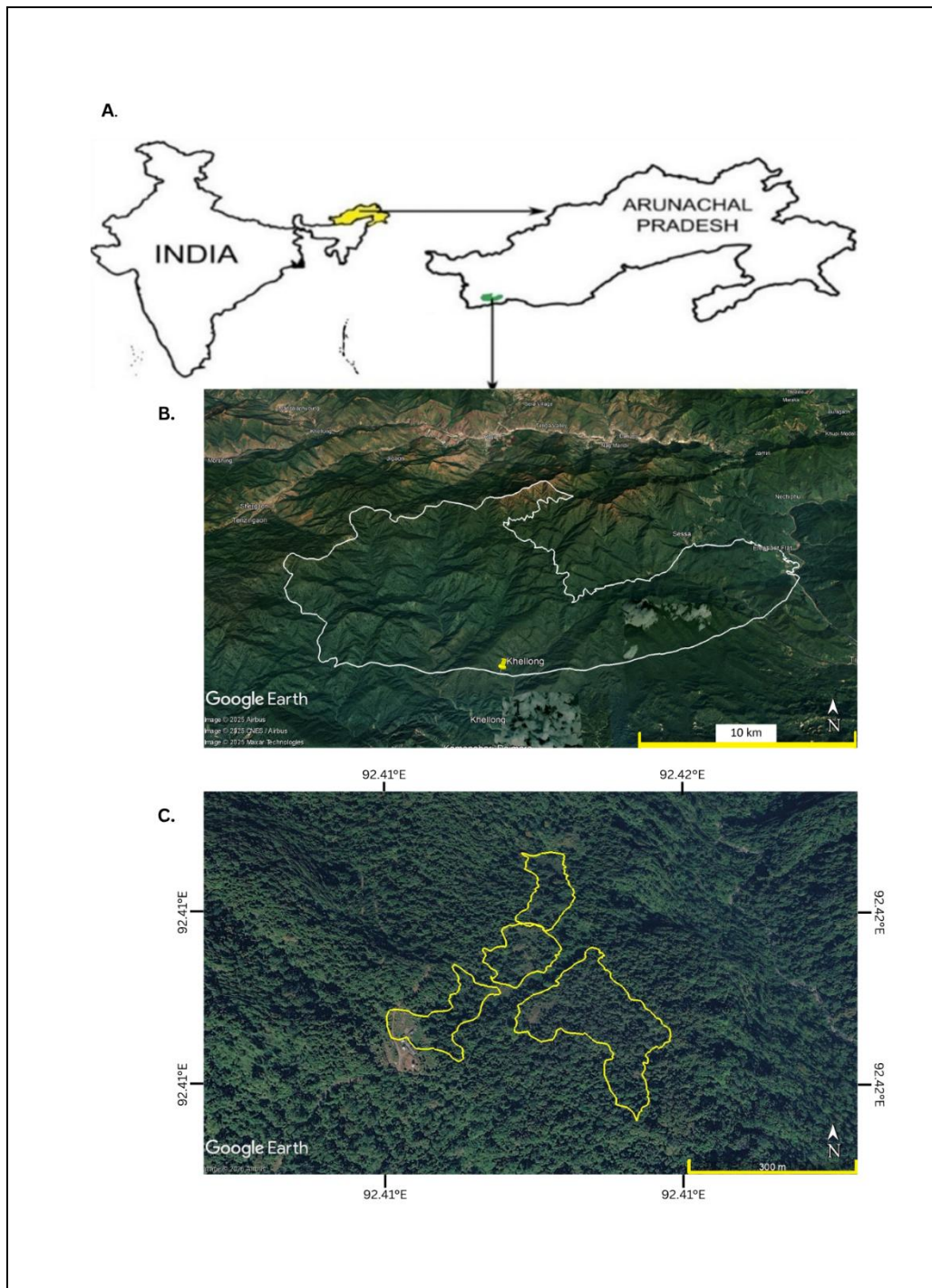


Fig. S1: Map of India showing the location of Arunachal Pradesh (A), boundary of the Eaglenest Wildlife Sanctuary (WLS) in Arunachal Pradesh, India in white (B), study site within Eaglenest WLS open disturbed habitats dominated by invasive plant species, where pollination exclusion experiments were conducted (outlined in yellow) (C).



Fig. S2: Extensive invasion of *Ageratum conyzoides* in the study site.



Fig. S3: Dense growth and spread of *Chromolaena odorata* across the study site.



Fig. S4: Proliferation of *Mikania micrantha* over surrounding vegetation in the study site

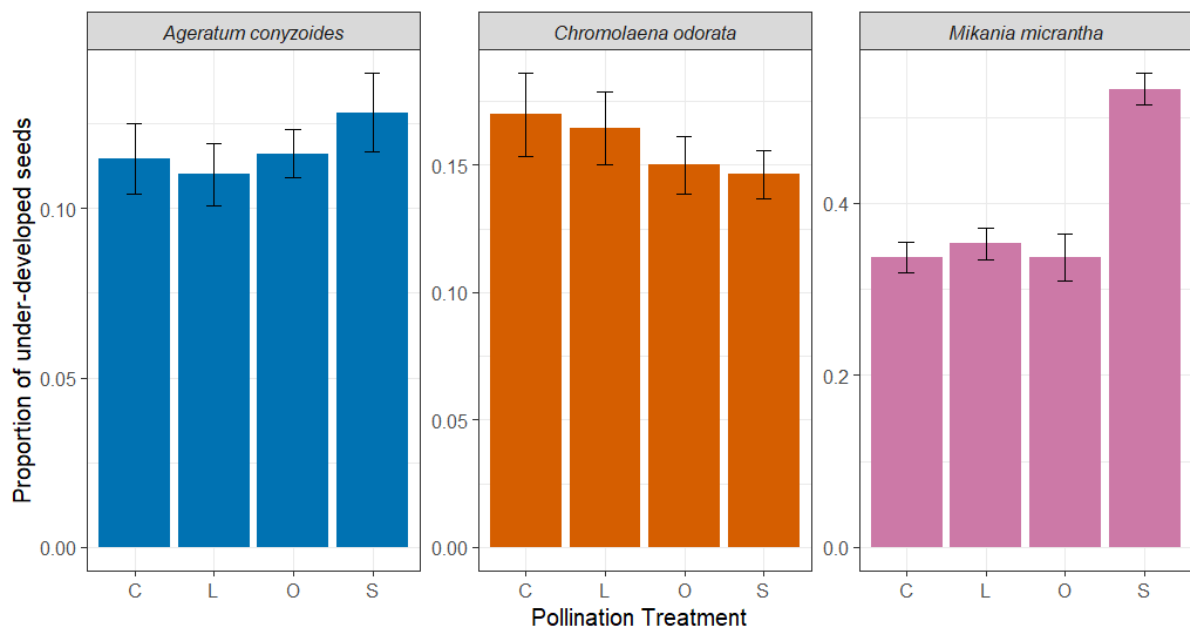


Fig. S5: Proportion of under-developed seeds under different pollination exclusion treatments in *Ageratum conyzoides*, *Chromolaena odorata*, and *Mikania micrantha*. Bars represent mean values and error bars indicate  $\pm$  SE.

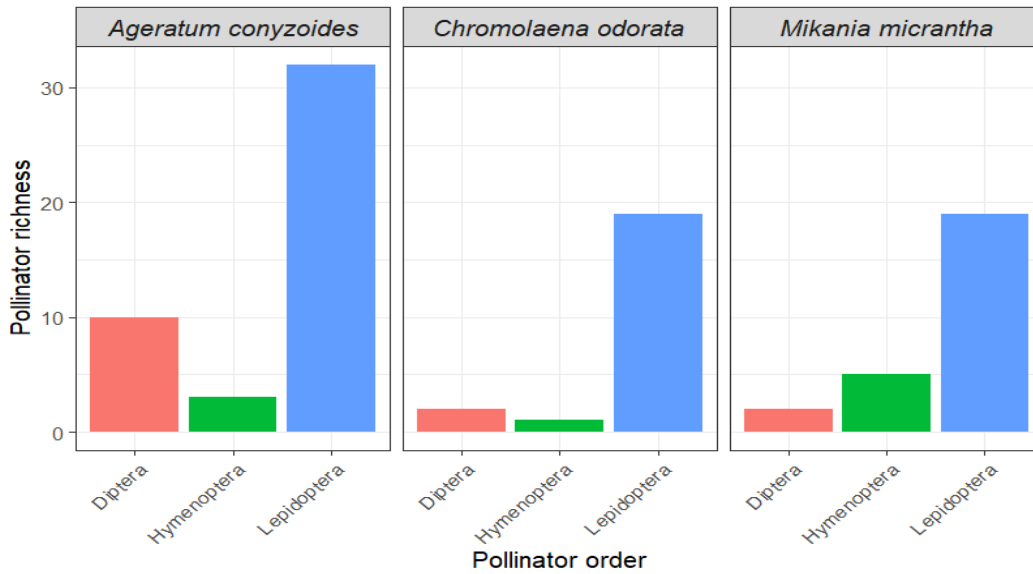


Fig. S6: Pollinator richness across pollinator orders visiting *Ageratum conyzoides*, *Chromolaena odorata*, and *Mikania micrantha*. Bars represent the number of pollinator species recorded within each pollinator order.

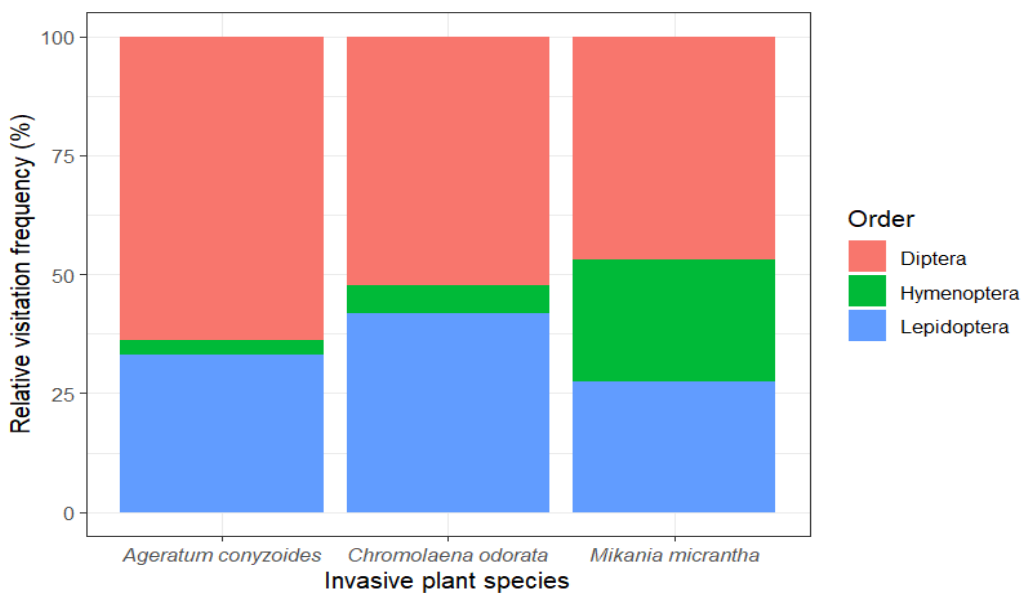


Fig. S7: Relative visitation frequency (%) of different pollinator orders visiting *Ageratum conyzoides*, *Chromolaena odorata*, and *Mikania micrantha*. Bars represent the proportion of total pollinator interactions contributed by each pollinator order.