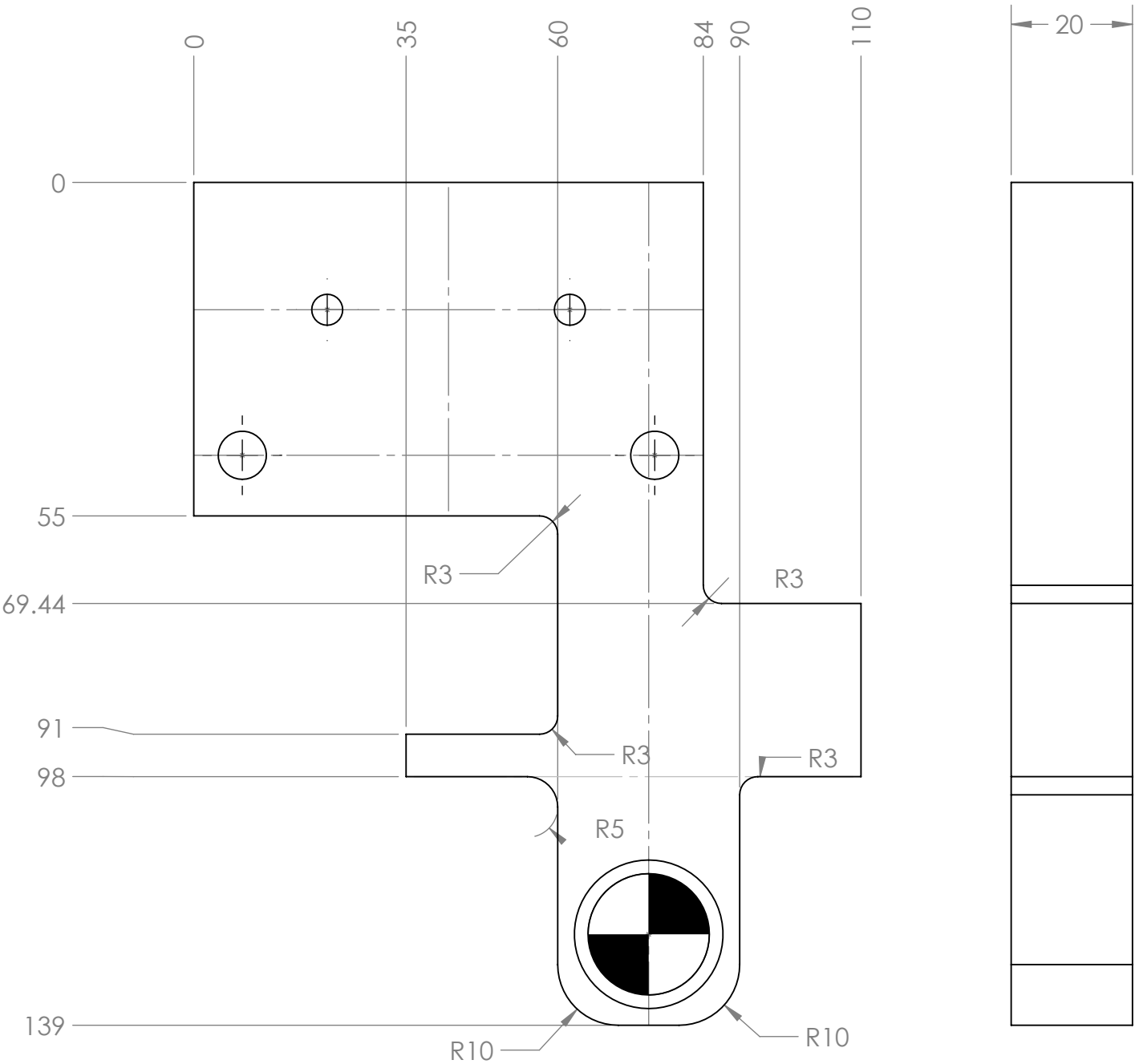


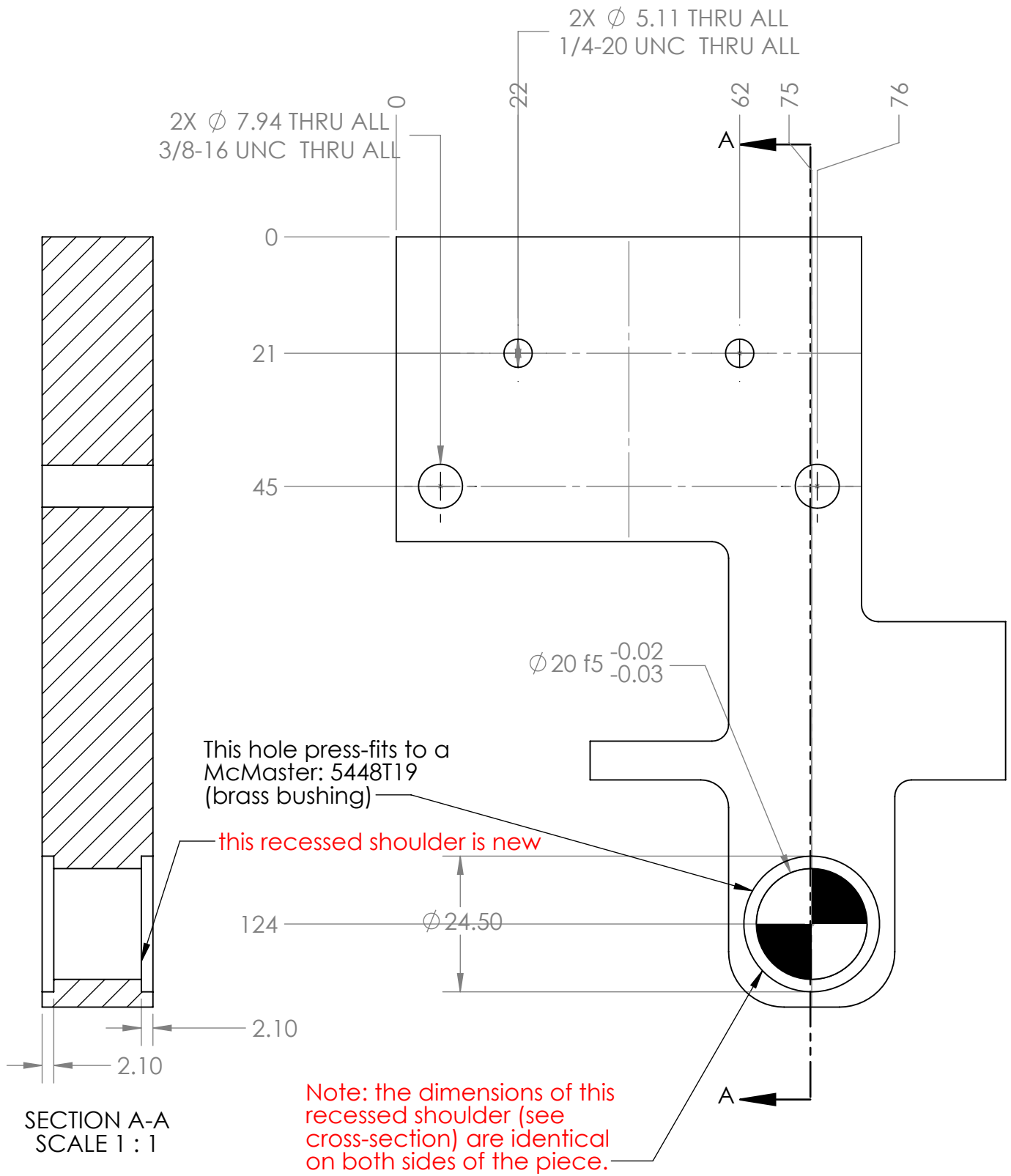
Top View

Side View

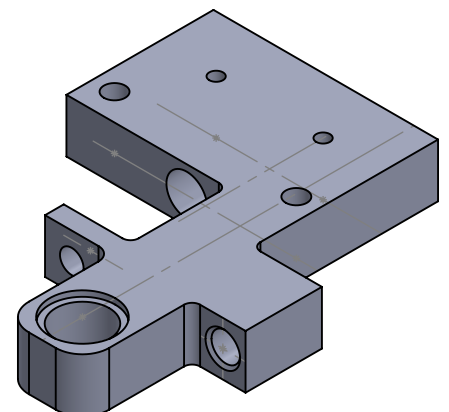


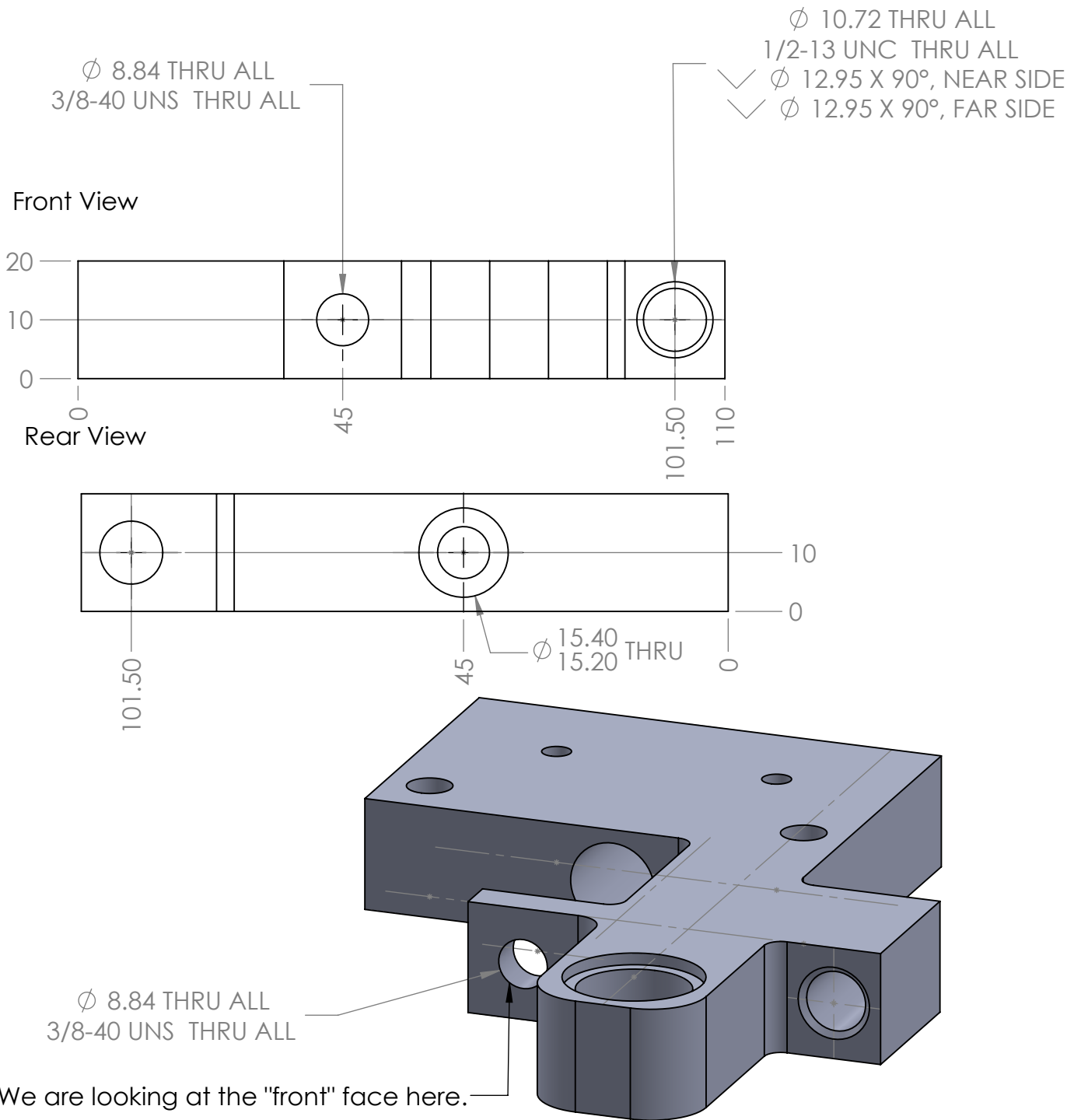
Note: Fillet radii denote maximum radius, smaller is fine.

Author	Franklin Fuller
Part Name	BaseExcPlatform
Units	mm
Precision	+/- 0.005 inches (0.127 mm), unless noted otherwise
Material	Aluminum
Qty	1
Sheet Name	External Dims (1/4)
# Sheets	3

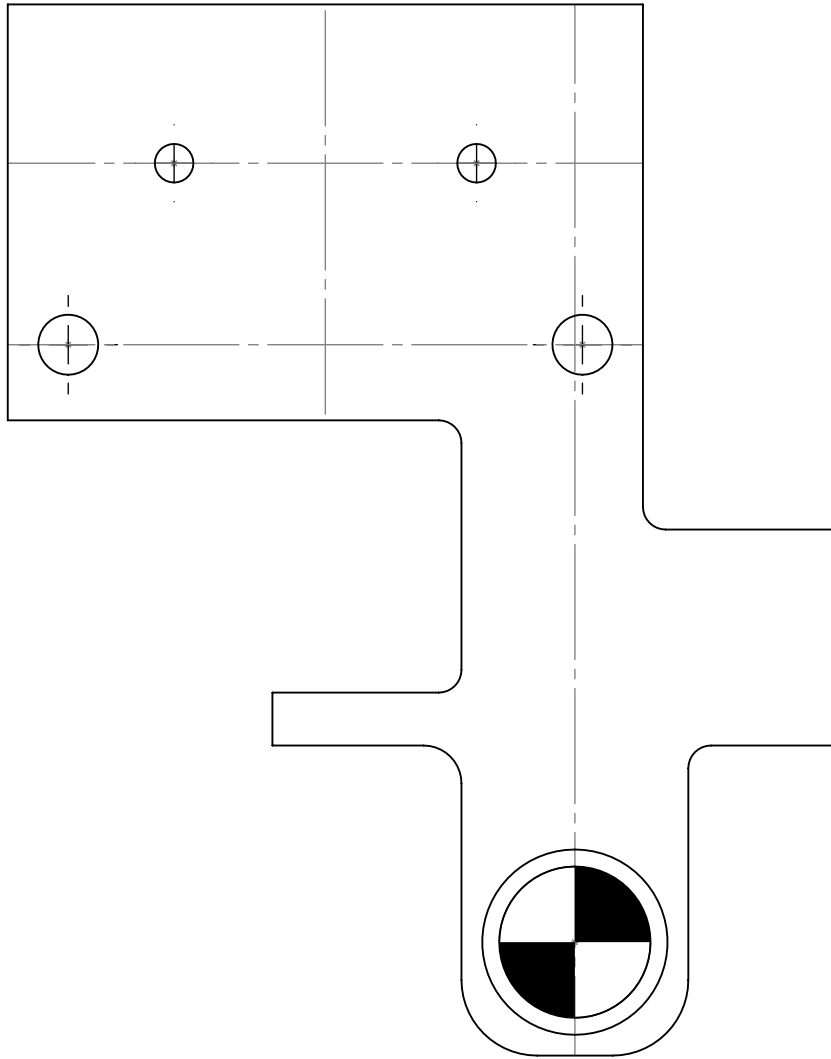


Author	Franklin Fuller
Part Name	BaseExcPlatform
Units	mm
Precision	+/- 0.005 inches (0.127 mm), unless noted otherwise
Material	Aluminum
Qty	1
Sheet Name	Vertical Holes Detail (2/4)
# Sheets	3





Author	Franklin Fuller
Part Name	BaseExcPlatform
Units	mm
Precision	+/- 0.005 inches (0.127 mm), unless noted otherwise
Material	Aluminum
Qty	1
Sheet Name	Horizontal Holes Detail (3/4)
# Sheets	3



As oriented here this is the intended "right-side-up". A recessed shoulder around the dowel hole should be facing the viewer. In order to make this happen, the 5448T19 Bushing needs to be pressed out. A recessed shoulder needs to be machined into the opposite side of what exists (so that it looks like the above). Then a new bushing needs to be inserted (or the same one if it's recoverable).

Author	Franklin Fuller
Part Name	BaseExcPlatform
Units	mm
Precision	+/- 0.005 inches (0.127 mm), unless noted otherwise
Material	Aluminum
Qty	1
Sheet Name	Modifications of original (4/4)
# Sheets	3